

# CENTRAL SALT LAKE COUNTY LAND

FOR SALE



## PROPERTY DETAILS

663 WEST 4100 SOUTH, MURRAY, UT 84123

- 9.77 total acres
- 21,972 total square feet
- Two (2) buildings
- 6,925 square foot office building
- 15,047 square foot shop building
- Ten (10) 14'x16' ground level doors
- 100' bay depth
- Two (2) mechanic pits
- One (1) truck wash bay
- 18' clear height
- Two (2) vehicle weigh scales
- 2023 property tax: \$55,797.43
- Zoned MG (Manufacturing General)
- Opportunity Zone land
- Property located in Murray City
- Certified underground fuel tanks
- Central Salt Lake County location
- Access to I-15 from 3300 and 4500 South



**MOUNTAIN WEST**  
COMMERCIAL REAL ESTATE

**ROBERT KINGSFORD**, SIOR, CCIM  
rkingsford@mwcre.com  
direct 801.895.3040  
[View Profile](#)

**FULL SERVICE  
COMMERCIAL REAL ESTATE**  
312 East South Temple  
Salt Lake City, UT 84111  
Office 801.456.8800  
[www.mwcre.com](http://www.mwcre.com)





**MOUNTAIN WEST**  
COMMERCIAL REAL ESTATE

**ROBERT KINGSFORD**, SIOR, CCIM

rkingsford@mwcre.com

direct 801.895.3040

[View Profile](#)



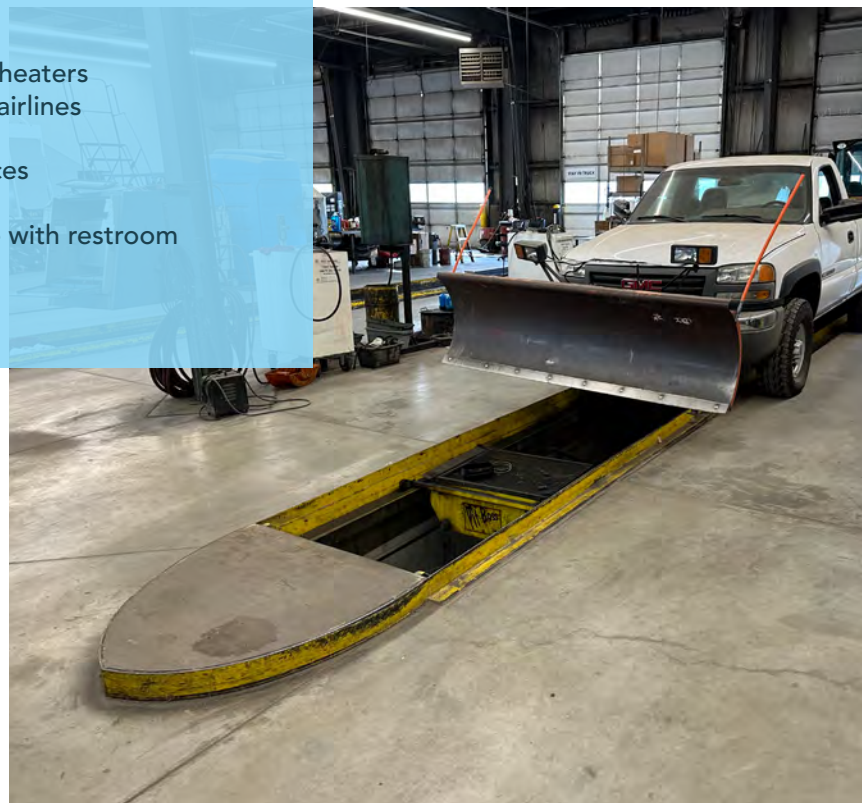
### OFFICE BUILDING

- 8 Private offices
- 1 Breakroom
- 2 Regular restrooms
- 1 Driver lounge
- 2 Restrooms with showers
- Large bullpen area



### TRUCK SHOP

- 3 Gas forced heaters
- Compressed airlines
- Floor drains
- 2 Private offices
- Parts room
- Driver lounge with restroom
- Breakroom
- Locker room



**FULL SERVICE  
COMMERCIAL REAL ESTATE**

312 East South Temple

Salt Lake City, UT 84111

Office 801.456.8800

[www.mwcre.com](http://www.mwcre.com)





**MOUNTAIN WEST**  
COMMERCIAL REAL ESTATE

**ROBERT KINGSFORD**, SIOR, CCIM  
rkingsford@mwcre.com  
direct 801.895.3040  
[View Profile](#)



**FULL SERVICE  
COMMERCIAL REAL ESTATE**  
312 East South Temple  
Salt Lake City, UT 84111  
Office 801.456.8800  
[www.mwcre.com](http://www.mwcre.com)





4060 S

700 W

4100 S

9.77 AC

4170 S

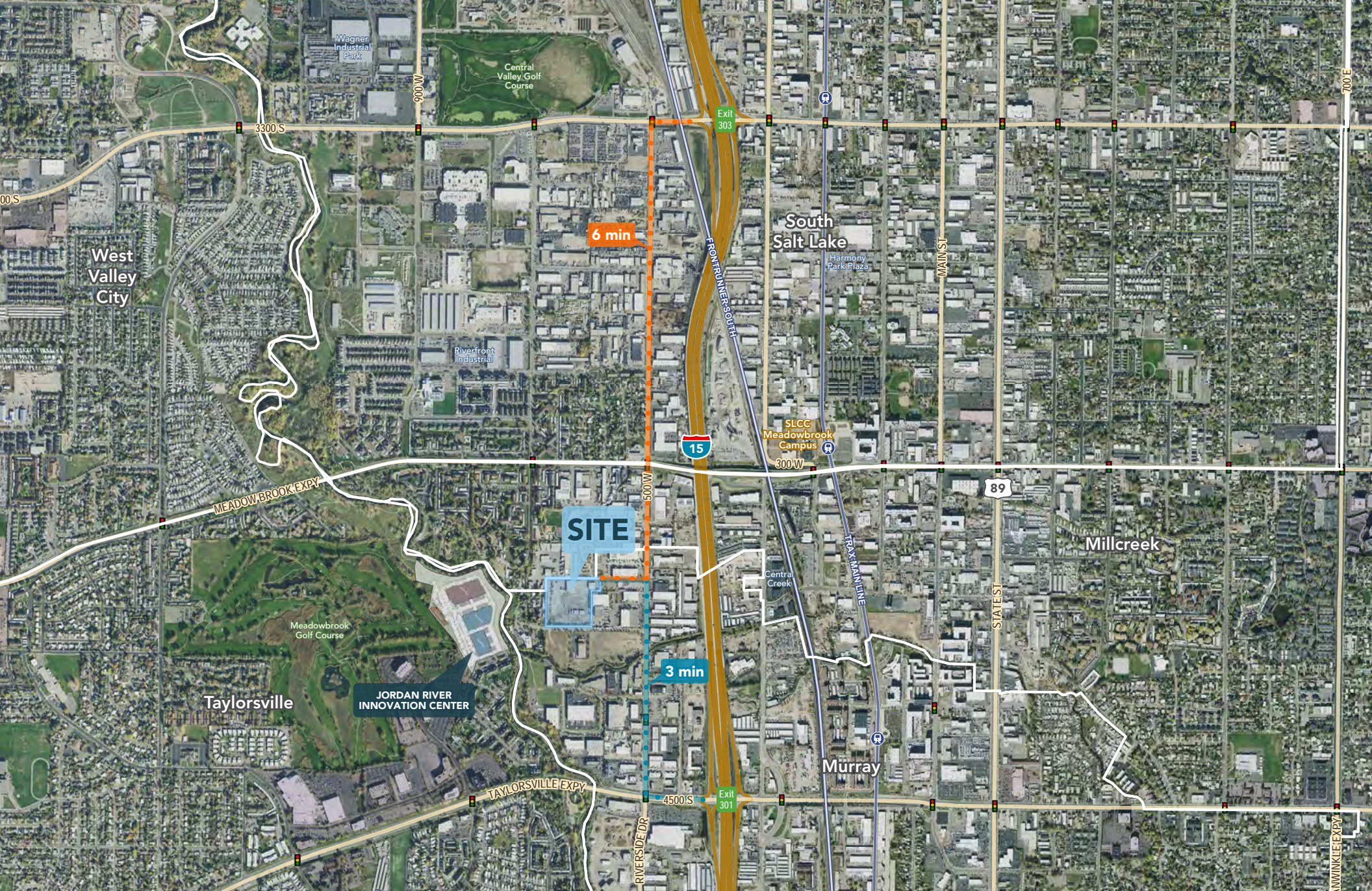


**MOUNTAIN WEST**  
COMMERCIAL REAL ESTATE

**ROBERT KINGSFORD**, SIOR, CCIM  
rkingsford@mwcre.com  
direct 801.895.3040  
[View Profile](#)

**FULL SERVICE  
COMMERCIAL REAL ESTATE**  
312 East South Temple  
Salt Lake City, UT 84111  
Office 801.456.8800  
[www.mwcre.com](http://www.mwcre.com)





**ROBERT KINGSFORD**, SJOR, CCIM  
rkingsford@mwcre.com  
direct 801.895.3040  
[View Profile](#)

**MOUNTAIN WEST**  
COMMERCIAL REAL ESTATE

**FULL SERVICE  
COMMERCIAL REAL ESTATE**  
312 East South Temple  
Salt Lake City, UT 84111  
Office 801.456.8800  
[www.mwcre.com](http://www.mwcre.com)

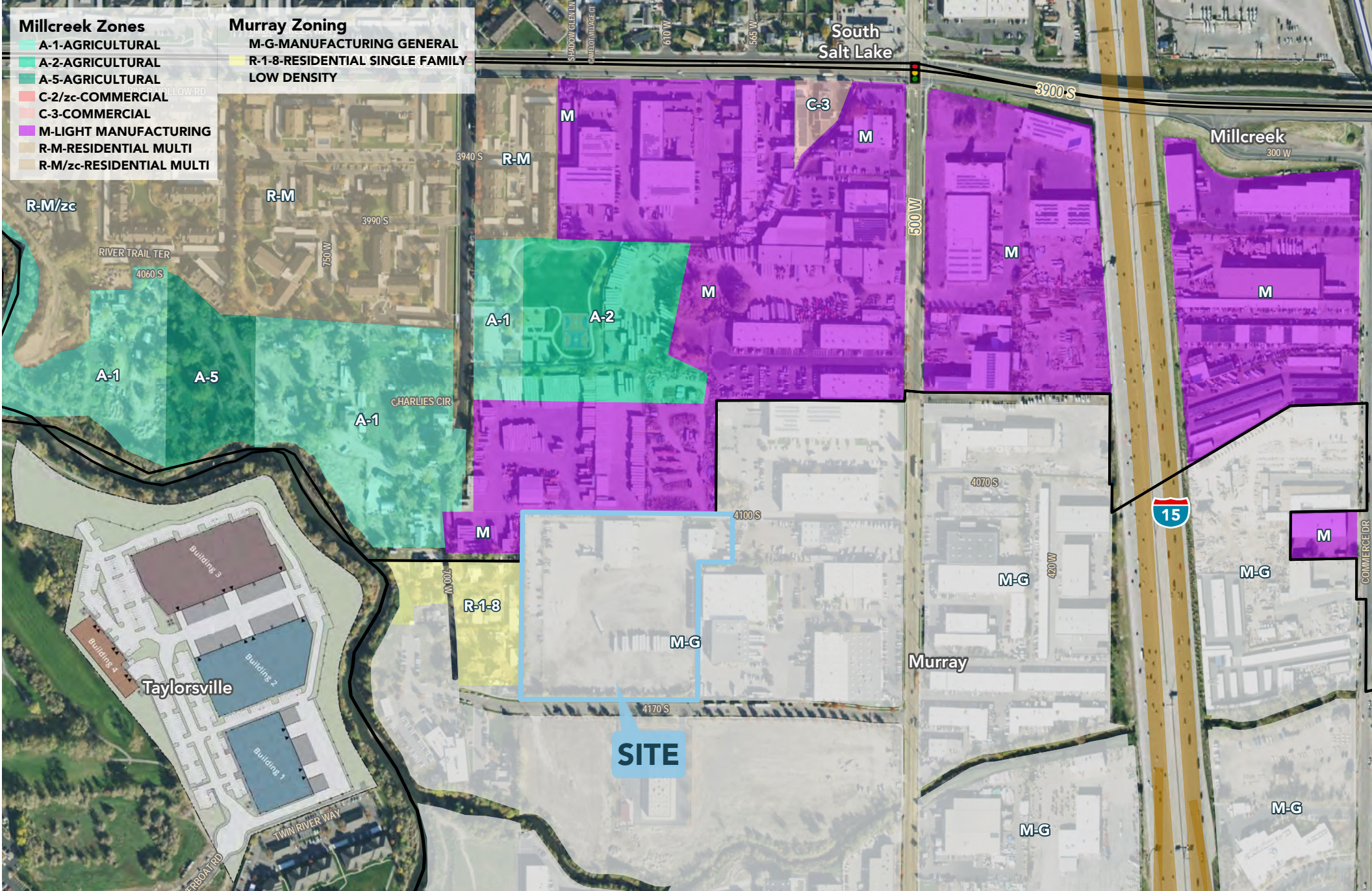


### Millcreek Zones

- A-1-AGRICULTURAL
- A-2-AGRICULTURAL
- A-5-AGRICULTURAL
- C-2/zc-COMMERCIAL
- C-3-COMMERCIAL
- M-LIGHT MANUFACTURING
- R-M-RESIDENTIAL MULTI
- R-M/zc-RESIDENTIAL MULTI

### Murray Zoning

- M-G-MANUFACTURING GENERAL
- R-1-8-RESIDENTIAL SINGLE FAMILY LOW DENSITY





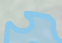
**ROBERT KINGSFORD**, SJOR, CCIM  
 rkingsford@mwcre.com  
 direct 801.895.3040  
[View Profile](#)

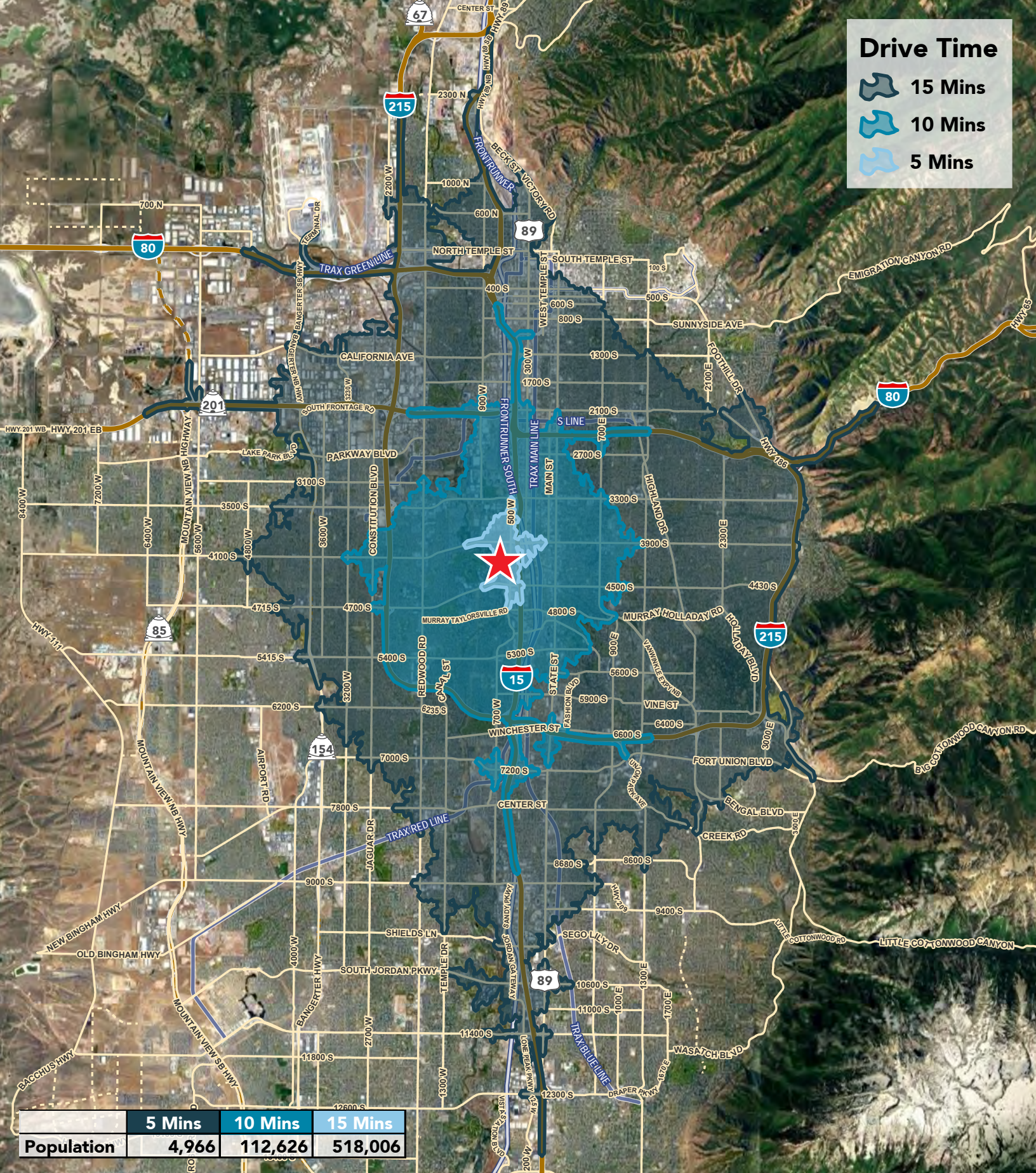
**MOUNTAIN WEST**  
 COMMERCIAL REAL ESTATE

**FULL SERVICE**  
**COMMERCIAL REAL ESTATE**  
 312 East South Temple  
 Salt Lake City, UT 84111  
 Office 801.456.8800  
[www.mwcre.com](http://www.mwcre.com)



# Drive Time

-  15 Mins
-  10 Mins
-  5 Mins



	5 Mins	10 Mins	15 Mins
<b>Population</b>	<b>4,966</b>	<b>112,626</b>	<b>518,006</b>



**MOUNTAIN WEST**  
COMMERCIAL REAL ESTATE

**ROBERT KINGSFORD**, SIOR, CCIM  
rkingsford@mwcre.com  
direct 801.895.3040  
[View Profile](#)

**FULL SERVICE  
COMMERCIAL REAL ESTATE**  
312 East South Temple  
Salt Lake City, UT 84111  
Office 801.456.8800  
[www.mwcre.com](http://www.mwcre.com)

This statement with the information it contains is given with the understanding that all negotiations relating to the purchase, renting or leasing of the property described above shall be conducted through this office. The above information while not guaranteed has been secured from sources we believe to be reliable.