

# FOR SALE

## CRISS BLACK ROAD INDUSTRIAL SITE

31 Criss Black Road Cartersville, GA 30120

### LOCATION DESCRIPTION

From Atlanta, take I-75N for approximately 40 miles to Exit 290, GA Highway 20. Take a left onto GA Highway 20 westbound toward Rome. Take a left onto US-411. Take a right onto US-41 North. Use the right lane to take the US-411 S/GA-20 W ramp to Rome. Turn right onto Criss Black Road NW.

### OFFERING SUMMARY

Listing Price	\$5,500,000
Zoning:	I-1 & R-1
APN:	0049-0020-001



### PROPERTY DESCRIPTION

120.128 Acres of unimproved land with mixed zoning, primarily I-1 light industrial zoning, fronting U.S. Highway 411 in Bartow County. 103.492 +/- acres zoned I-1, general industrial district. 16.636 +/- acres zoned R-1 residential. The property is positioned in the path of growth in Bartow County. Planned Rome-Cartersville Development Corridor to provide freeway connection to Interstate 75. Potential for rail access. Neighbor to developing Hyundai/SK battery plant.

### PROPERTY HIGHLIGHTS

- 103.49 +/- Ac. Zoned I-1
- 16.6 +/- Ac. Zoned R-1
- Potential for Rail Access
- 2,476' of Frontage on U.S. Hwy. 411
- All Utilities to Site

#### Kurt Cooper

O: 678 320 4800 | C: 404 861 1300

kurt.cooper@cbcmetrobrokers.com

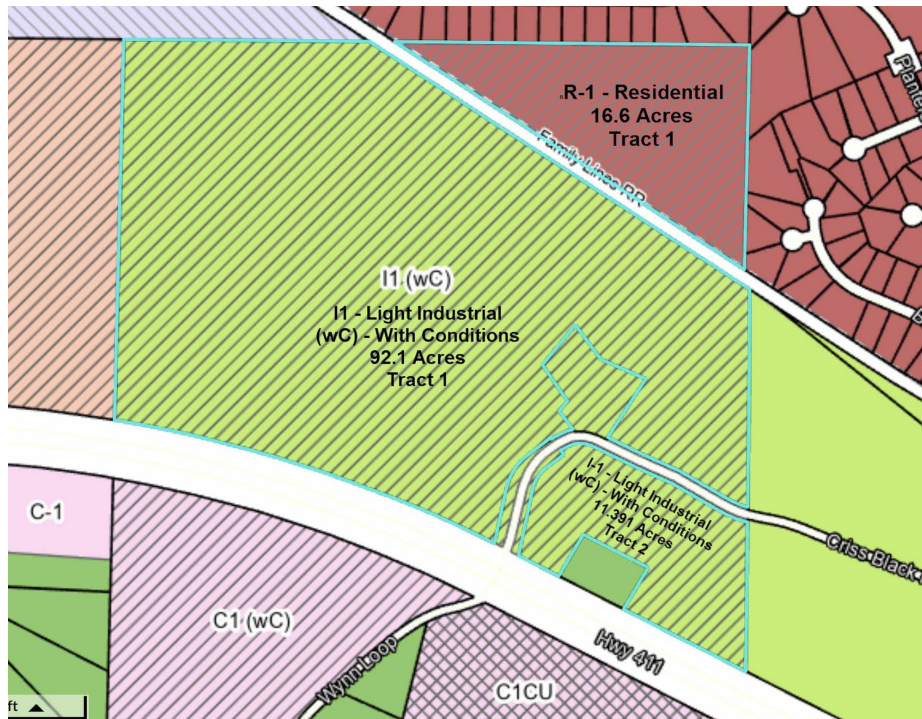
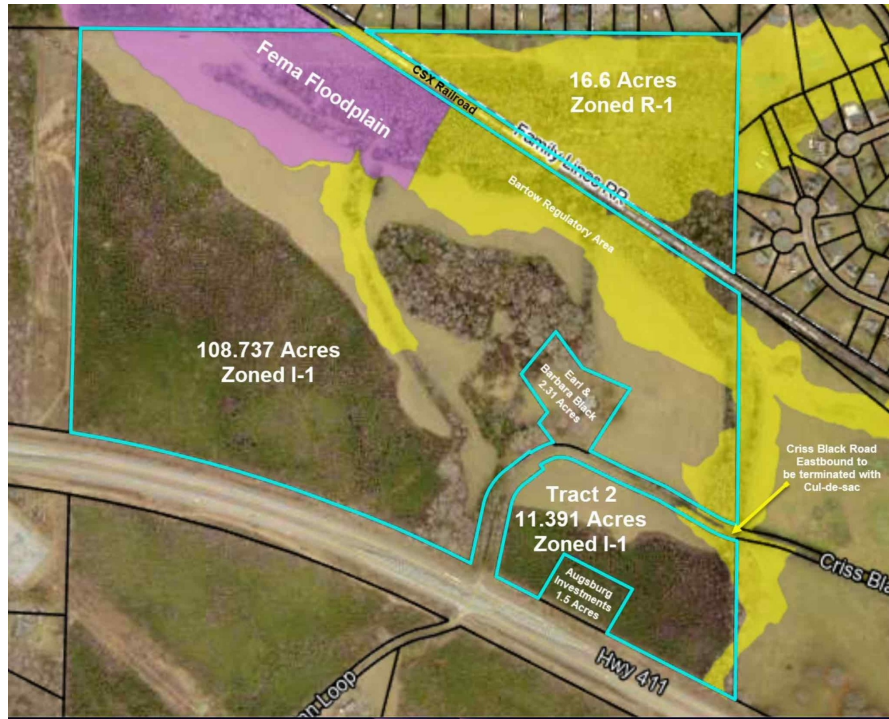


COLDWELL BANKER  
**COMMERCIAL**  
METRO BROKERS

# FOR SALE

## CRISS BLACK ROAD INDUSTRIAL SITE

31 Criss Black Road Cartersville, GA 30120



**Kurt Cooper**

O: 678 320 4800 | C: 404 861 1300

kurt.cooper@cbcmetrobrokers.com

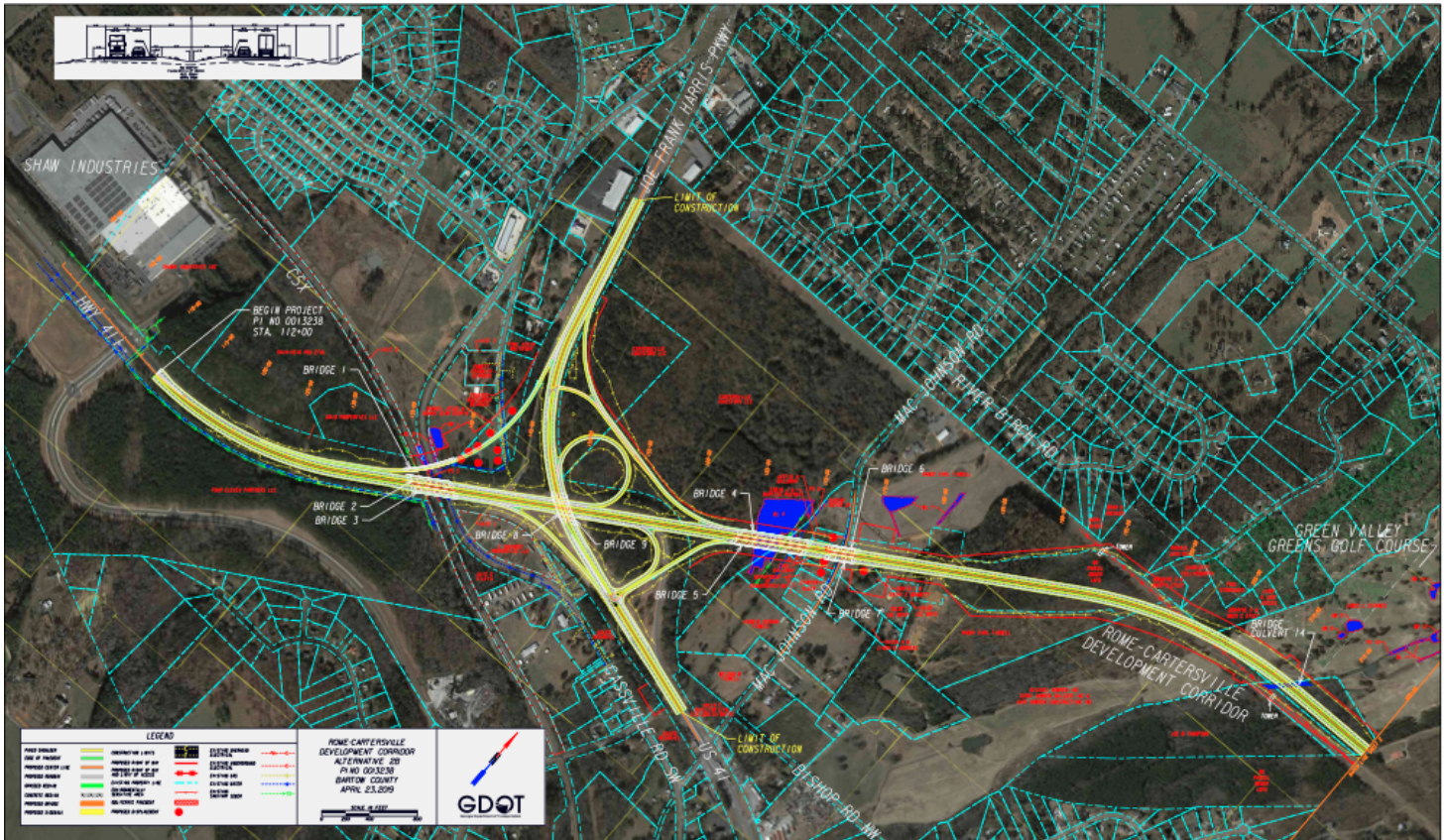


**COLDWELL BANKER  
COMMERCIAL  
METRO BROKERS**

# FOR SALE

## CRISS BLACK ROAD INDUSTRIAL SITE

31 Criss Black Road Cartersville, GA 30120



### Rome-Cartersville Development Corridor Planned Road Improvements

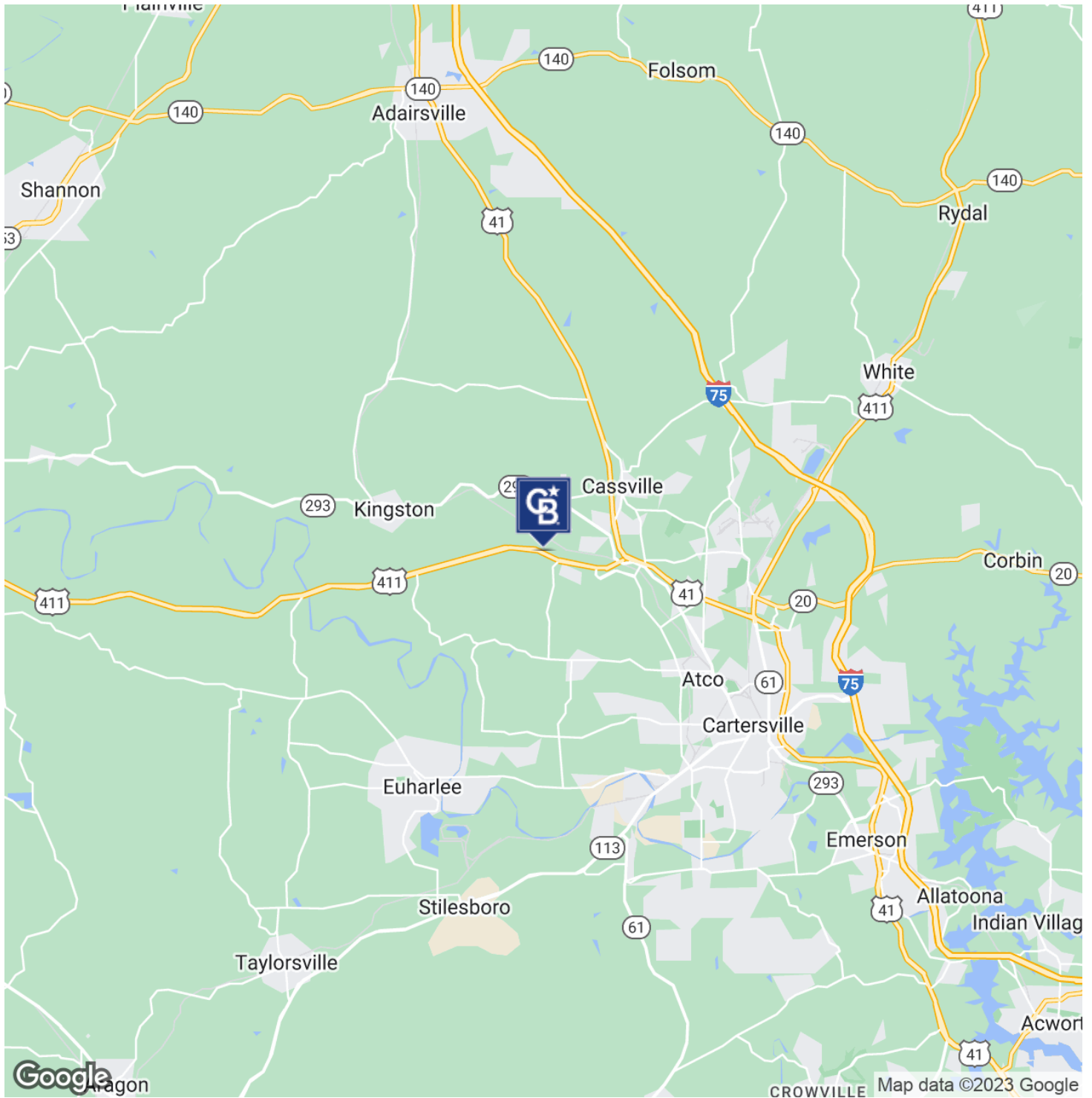
**Kurt Cooper**  
O: 678 320 4800 | C: 404 861 1300  
kurt.cooper@cbcmetrobrokers.com



# FOR SALE

## CRISS BLACK ROAD INDUSTRIAL SITE

31 Criss Black Road Cartersville, GA 30120



**Kurt Cooper**

O: 678 320 4800 | C: 404 861 1300

kurt.cooper@cbcmetrobrokers.com

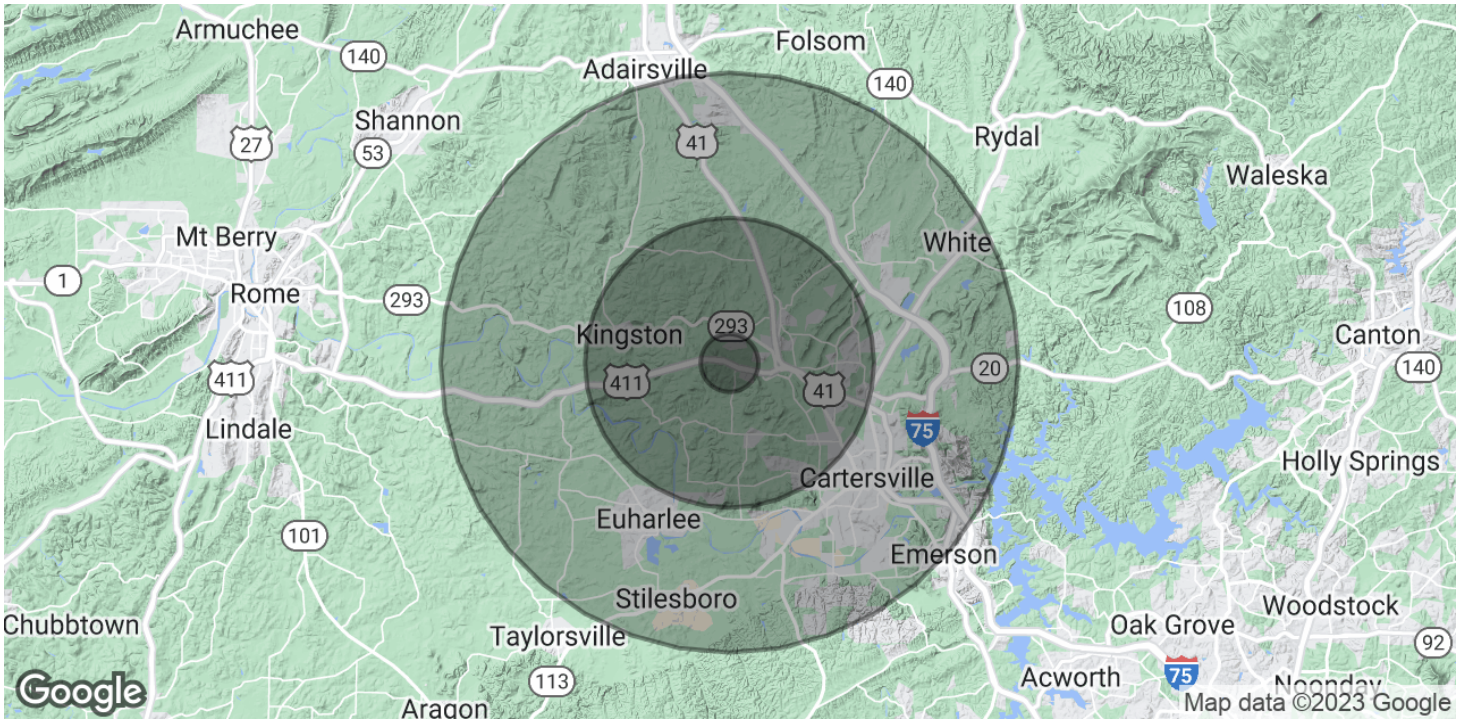


**COLDWELL BANKER  
COMMERCIAL  
METRO BROKERS**

# FOR SALE

## CRISS BLACK ROAD INDUSTRIAL SITE

31 Criss Black Road Cartersville, GA 30120



<b>POPULATION</b>	<b>1 MILE</b>	<b>5 MILES</b>	<b>10 MILES</b>
Total Population	1,536	30,074	81,025
Average Age	32.9	34	35.4
Average Age (Male)	32.3	34	34.8
Average Age (Female)	32.4	33.5	35.5

<b>HOUSEHOLDS &amp; INCOME</b>	<b>1 MILE</b>	<b>5 MILES</b>	<b>10 MILES</b>
Total Households	530	10,300	28,474
# of Persons per HH	2.9	2.9	2.8
Average HH Income	\$52,599	\$58,968	\$61,601
Average House Value		\$161,964	\$167,328

\* Demographic data derived from 2020 ACS - US Census

### Kurt Cooper

O: 678 320 4800 | C: 404 861 1300

kurt.cooper@cbcmetrobrokers.com



**COLDWELL BANKER**  
**COMMERCIAL**  
**METRO BROKERS**