

BUILT TO SUIT / GROUND LEASE OPPORTUNITY

# SAWMILL DR

Tupelo, MS 38804

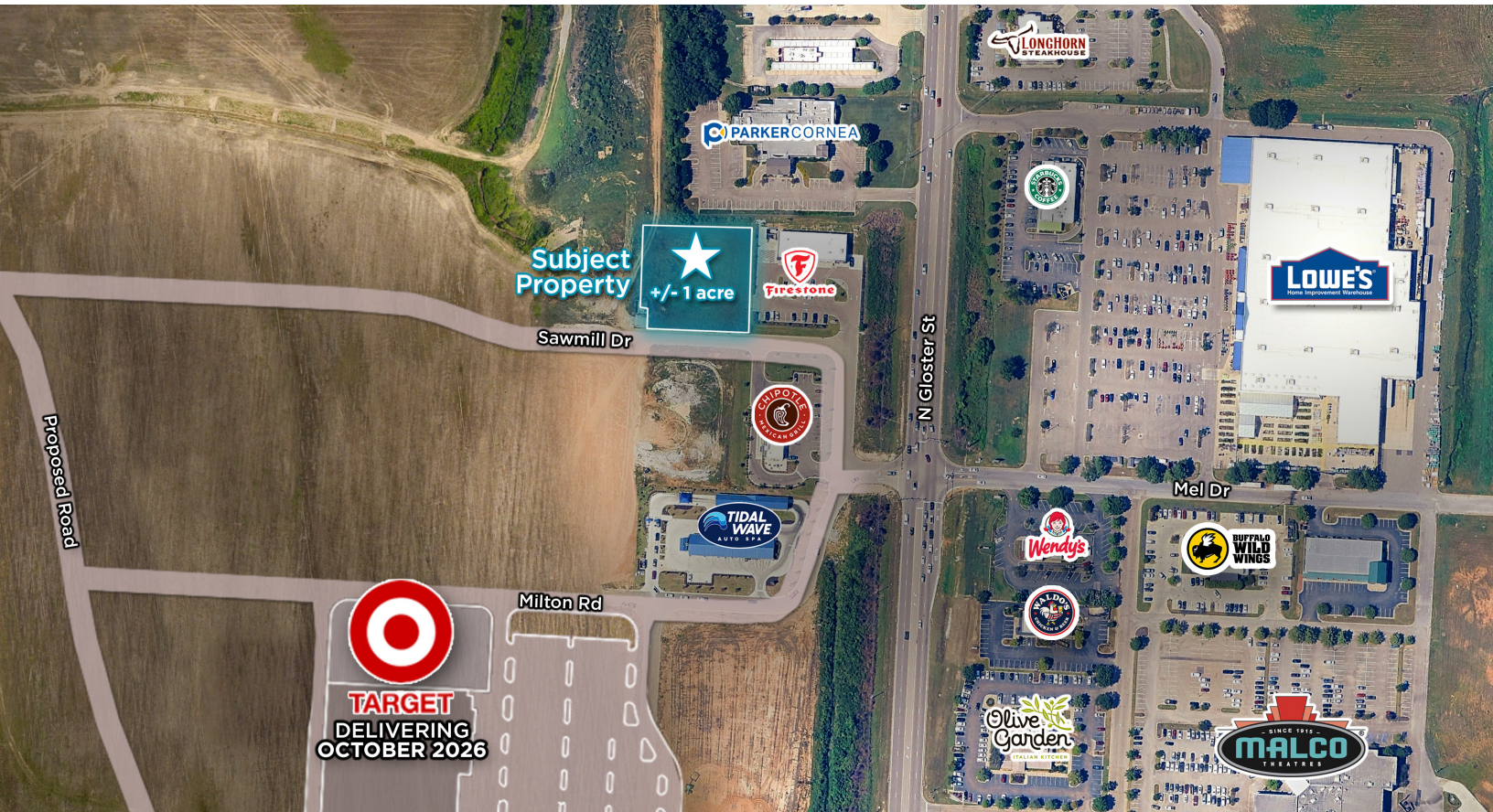


CUSHMAN &  
WAKEFIELD



COMMERCIAL  
ADVISORS

+/- 1 ACRE AVAILABLE



## RETAIL LAND OPPORTUNITY

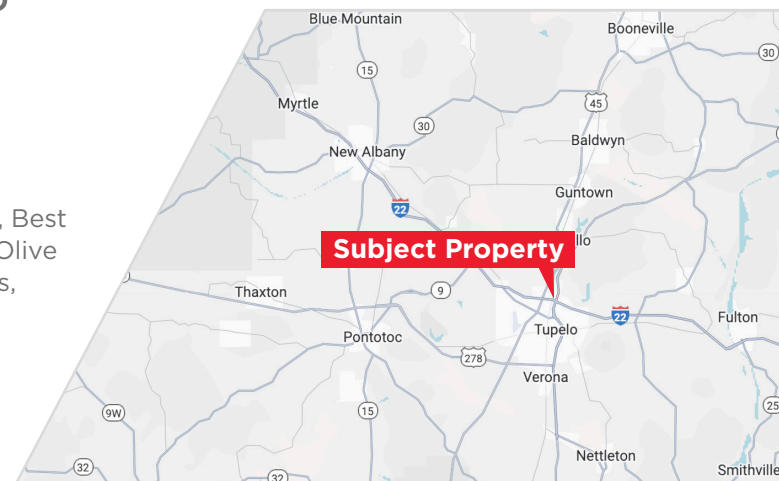
+/- 1 ACRE IN TUPELO, MS

### PROPERTY HIGHLIGHTS:

- +/- 1 acre
- Parcel #: 084S-18-046-00
- Area retails include: Walmart, Target, Sam's Club, Lowe's, Best Buy, Kohl's, Ross Dress for Less, TJ Maxx, Hobby Lobby, Olive Garden, Chili's, Buffalo Wild Wings, Wendy's, Papa John's, Starbucks, Dollar Tree, Old Navy, Belk, and JCPenney

### TRAFFIC COUNTS

- US Hwy 78: 37,000 VPD
- North Gloster St: 29,000 VPD
- Barnes Crossing Rd: 19,000 VPD



**Jeb Fields, SIOR Dual Designation**  
Vice Chairman & Principal  
(901) 362-4315  
jfields@commadv.com

**Carson Claybrook**  
Senior Vice President | Retail Broker Services  
901 252 6483  
cclaybrook@commadv.com

5101 Wheelis Drive, Suite 300  
Memphis, TN 38117  
Main: 901 366 6070  
[www.commadv.com](http://www.commadv.com)

*Independently Owned and Operated / A Member of the Cushman & Wakefield Alliance*

Cushman & Wakefield Copyright 2023. No warranty or representation, express or implied, is made to the accuracy or completeness of the information contained herein, and same is submitted subject to errors, omissions, change of price, rental or other conditions, withdrawal without notice, and to any special listing conditions imposed by the property owner(s). As applicable, we make no representation as to the condition of the property (or properties) in question.

BUILT TO SUIT / GROUND LEASE OPPORTUNITY

# SAWMILL DR



CUSHMAN &  
WAKEFIELD



COMMERCIAL  
ADVISORS

Tupelo, MS 38804

+/- 1 ACRE AVAILABLE

## LOCAL AMENITIES



**Jeb Fields, SIOR Dual Designation**  
Vice Chairman & Principal  
(901) 362-4315  
jfields@commadv.com

**Carson Claybrook**  
Senior Vice President | Retail Broker Services  
901 252 6483  
cclaybrook@commadv.com

5101 Wheelis Drive, Suite 300  
Memphis, TN 38117  
Main: 901 366 6070  
[www.commadv.com](http://www.commadv.com)

*Independently Owned and Operated / A Member of the Cushman & Wakefield Alliance*

Cushman & Wakefield Copyright 2023. No warranty or representation, express or implied, is made to the accuracy or completeness of the information contained herein, and same is submitted subject to errors, omissions, change of price, rental or other conditions, withdrawal without notice, and to any special listing conditions imposed by the property owner(s). As applicable, we make no representation as to the condition of the property (or properties) in question.