



For Lease

For Sale

RIPCO
RETAIL LEASING

1650 Crosby Avenue

Southeast corner of
Crosby Ave. and Roberts Ave.

Pelham Bay
Bronx, NY

| 2,200 SF

Ground floor space with full basement included
Asking price upon request

Contact Exclusive Agents

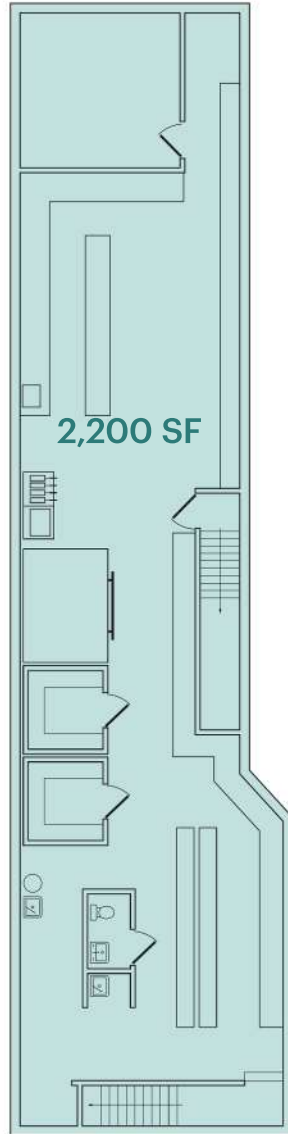
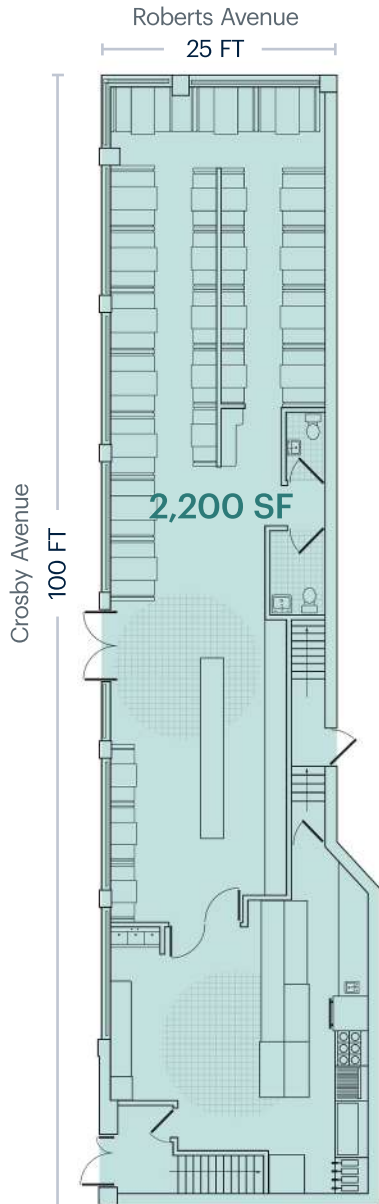
Jake Carnabuci
jcarnabuci@ripcony.com | 646.914.9489


Peter Yoon
pyoon@ripcony.com | 718.663.2645

Space Details

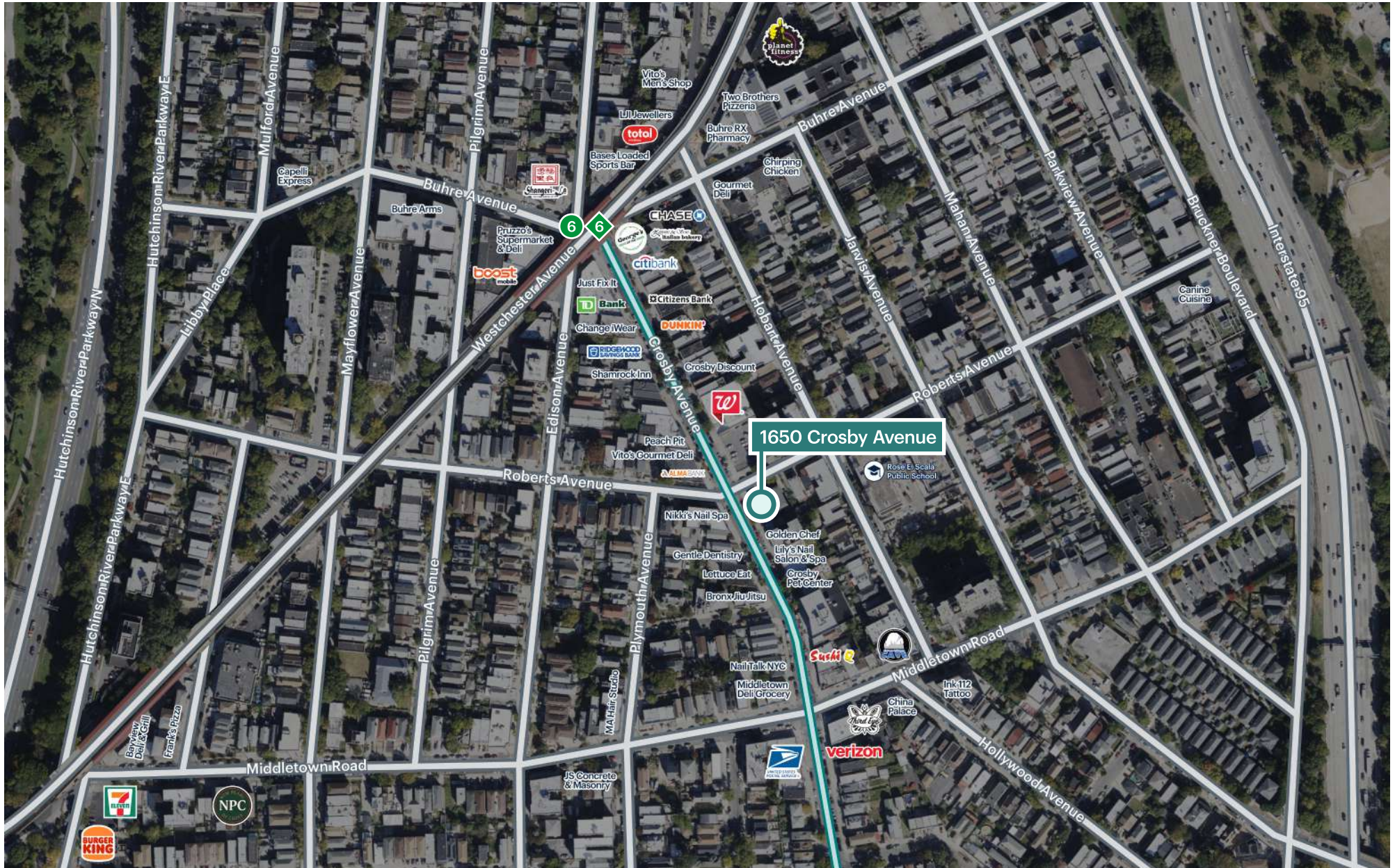
Ground Floor
Restaurant, retail space

Basement
Office, storage space



Location	West block between Roberts Avenue and Daniel Street	
Size	Ground Floor	2,200 SF
	Basement	2,200 SF
	Total	4,400 SF
Frontage	25 FT on Roberts Avenue 100 FT on Crosby Avenue	
Possession	Immediate	
Term	Long term	
Rent	Upon request	
Asking Price	Upon request	
Neighbors	Walgreens, Citizens Bank, TD Bank, Citi Bank, Chase Bank, Dunkin', Zeppieri & Sons Italian Bakery, Crosby Pizza Stop, Sushi Q, Crosby Pet Center	
Comments	Former Bakery with full build-out located on the corner of Crosby Avenue and Roberts Avenue in Pelham Bay, Bronx High visibility with tons of frontage on Crosby Avenue Directly across from Walgreens and one block away from the Buhre Avenue 6 train Gas, electric, and full kitchen with hood	
Transportation	Burhe Avenue	
2024 Ridership Report	Annual	766,190
	Weekday	2,571
	Weekend	1,999

Retail Map



Aerial Map

