

FOR SALE

9720 CUYAMACA STREET

SANTEE, CALIFORNIA 92071

*±3,200 Square Foot
Commercial /Religious
Facility Situated on a
±16,614 SF Land Parcel*



Exclusively listed by

ERIC KNOWLES
858.369.3017
eric.knowles@kidder.com
LIC N° 00944210

ROBERT FLETCHER
858.369.3034
robert.fletcher@kidder.com
LIC N° 01706060

RILEY ROHDE
858.369.3041
riley.rohde@kidder.com
LIC N° 02207141

KIDDER.COM





OPPORTUNITY

The Seller is interested in proposals to maximize the value of the site.

±3,200 SF commercial/religious facility

±16,614 SF land parcel

Commercial zoning; current use is church

Sanctuary seats ±150

3 classrooms, fellowship hall, kitchen, and an office

Buyer to verify its use with city

Zoning: NC (Neighborhood Commercial)

Centrally located in Santee

On-site parking

Buyer to verify square footage of improvements and land parcel

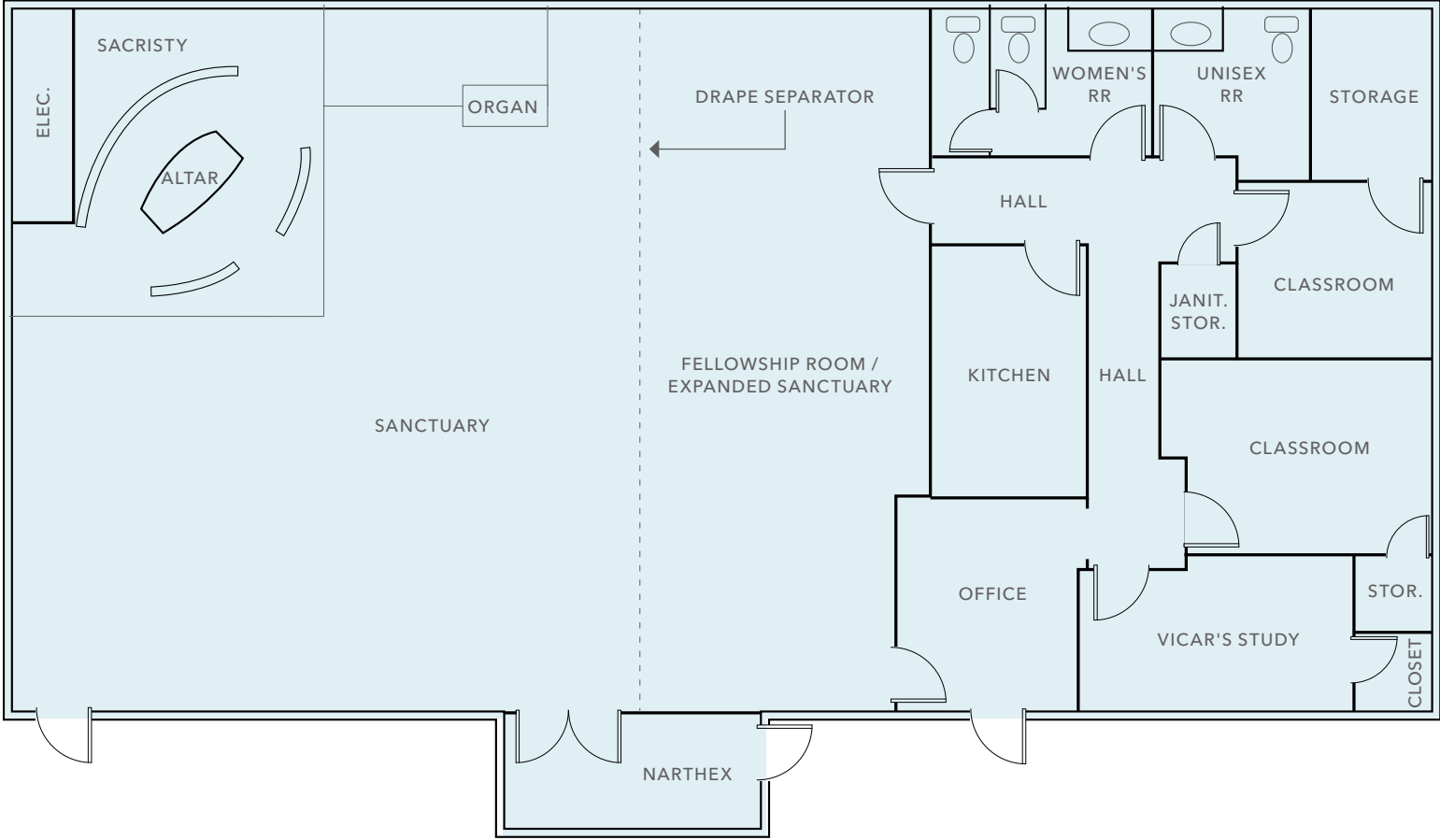
Please do not disturb tenant

Call agent for details

Sale Price: \$1,395,000



FLOOR PLAN





AVAILABLE FOR SALE

KIDDER MATHEWS

9720 CUYAMACA STREET



Exclusively listed by

ERIC KNOWLES
858.369.3017
eric.knowles@kidder.com
LIC N° 00944210

ROBERT FLETCHER
858.369.3034
robert.fletcher@kidder.com
LIC N° 01706060

RILEY ROHDE
858.369.3041
riley.rohde@kidder.com
LIC N° 02207141

KIDDER.COM

This information supplied herein is from sources we deem reliable. It is provided without any representation, warranty, or guarantee, expressed or implied as to its accuracy. Prospective Buyer or Tenant should conduct an independent investigation and verification of all matters deemed to be material, including, but not limited to, statements of income and expenses. Consult your attorney, accountant, or other professional advisor.

