



Todd Rice, CCIM
+1 501 850 0702
todd.rice@colliers.com

Brandon Rogers
+1 501 850 0722
brandon.rogers@colliers.com

1 Allied Drive, Suite 1500
Little Rock, AR 72202
P: +1 501 372 6161
F: +1 501 372 0671
colliers.com/arkansas

Former Church

For sale: 9621 Tall Timber Blvd,
Little Rock, AR

Features

- Former church building with sanctuary and classroom space intact, commercial kitchen and administrative offices
- Sound system and sanctuary chairs/furniture available
- 1.8 miles from I-430
- Abundant parking on site
- Porte-cochere with drive thru

Parcel 1: 12,000 SF former church building
on 5.03 Acres

Reduced sale price:
\$1,050,000

Parcel 2: 2.49 Acre excess land

\$200,000

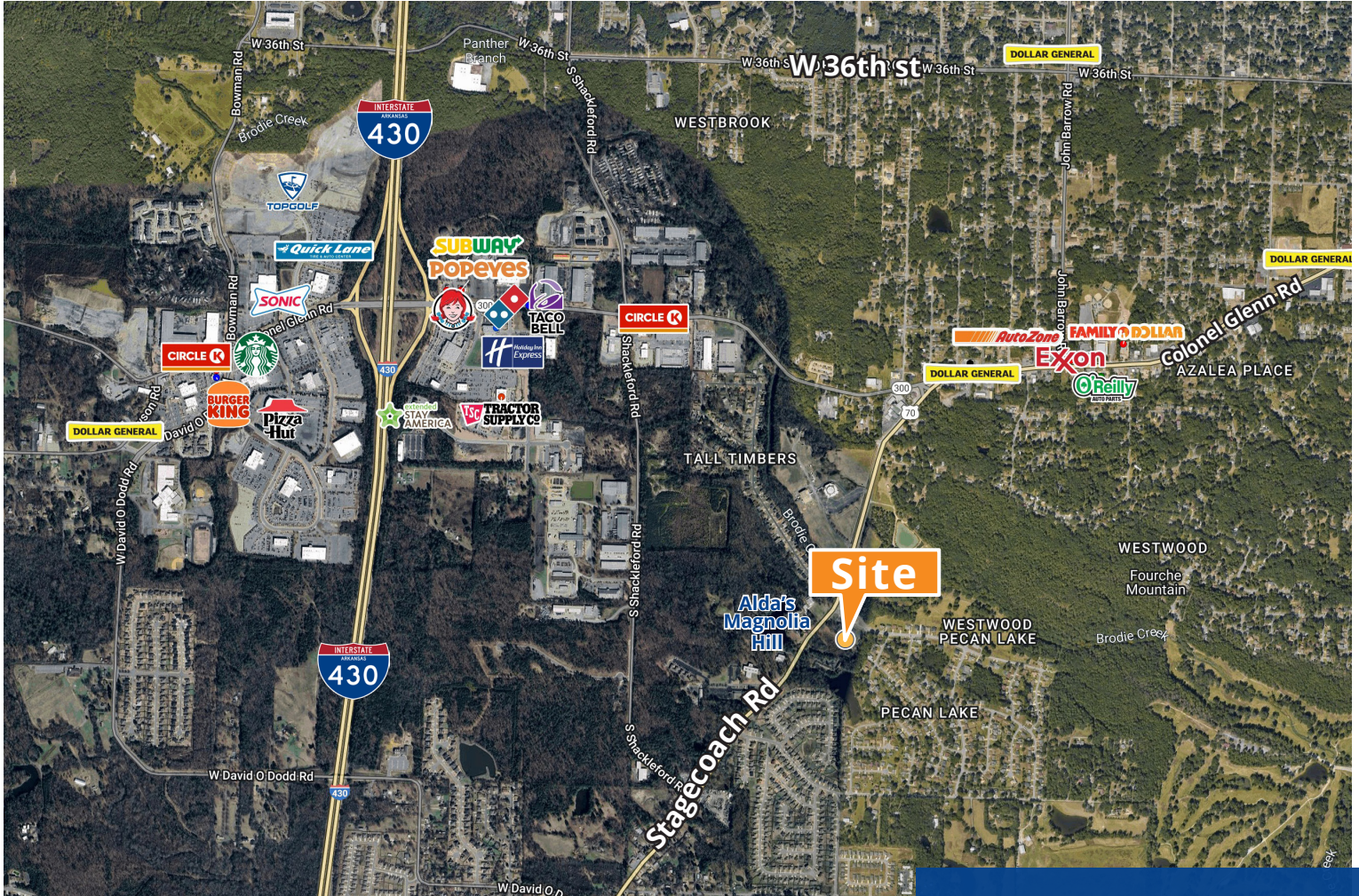
Both parcels can be purchased separately, or together for: \$1,250,000

Copyright © 2024 Colliers International. Information herein has been obtained from sources deemed reliable, however its accuracy cannot be guaranteed. The user is required to conduct their own due diligence and verification.

Property Photos



Neighborhood Map



Contact us:

Todd Rice, CCIM

+1 501 850 0702
todd.rice@colliers.com

Brandon Rogers

+1 501 850 0722
brandon.rogers@colliers.com

1 Allied Drive, Suite 1500
Little Rock, AR 72202
P: +1 501 372 6161
colliers.com/arkansas