

Pearland Central Medical Plaza

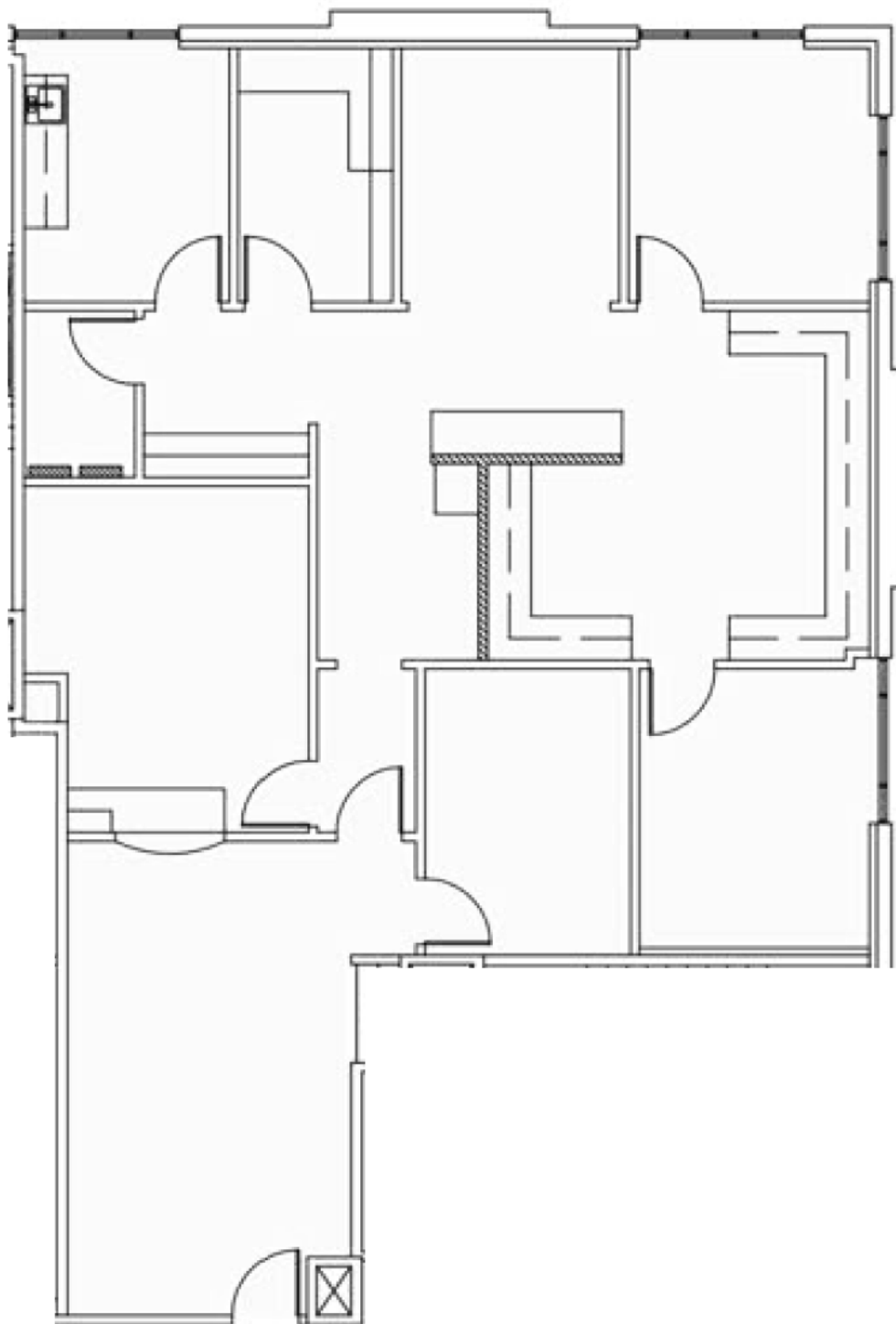
8619 Broadway St | Pearland, TX 77584

Suite 201 - 2,114 SF



TRANSWESTERN

REAL ESTATE
SERVICES



**PEARLAND
CENTRAL**

MEDICAL PLAZA

Leasing Information:

**Heinrich
Cronje**

832.408.4067

Heinrich.Cronje@transwestern.com

The information provided herein was obtained from sources believed reliable; however, Transwestern makes no guarantees, warranties or representations as to the completeness of accuracy thereof. The presentation of this property is submitted subject to errors, omissions, change of price or conditions, prior to sale or lease, or withdrawal without notice. Copyright © 2023 Transwestern.