



1390
E Bitters

San Antonio, TX 78216

Building for
Sale or Lease
14,740 SF

Scott Ferguson | 210.298.8531
scott.ferguson@streamrealty.com



Large conference/event space



Open workspace

Located in North Central San Antonio,

1390 E Bitters is a best-in-class user building with an incredible finish-out, including private offices, open workspace, and a large conference/event space.

This park-like setting includes a modern activated outdoor space including a chipping green, firepit area, and picnic tables.

It also borders the Salado Creek Greenway trails and has shower facilities to accommodate today's active employees.

It's central location is within a 15-minute drive of more than 470k with immediate access to Wurzbach Parkway and just minutes from US 281 and Loop 410.





Class A+ User
Building in NC
San Antonio



White noise
system



HID secured
access system



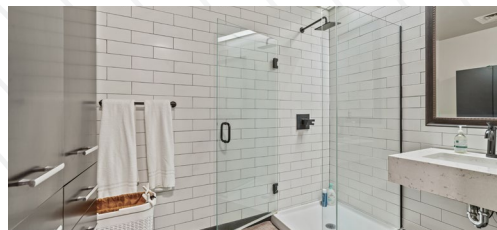
Fully A/V wired in
event space



Park-like setting



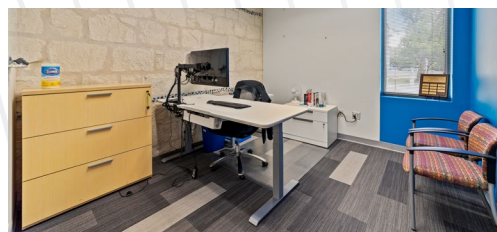
Premium furniture available



Shower facilities

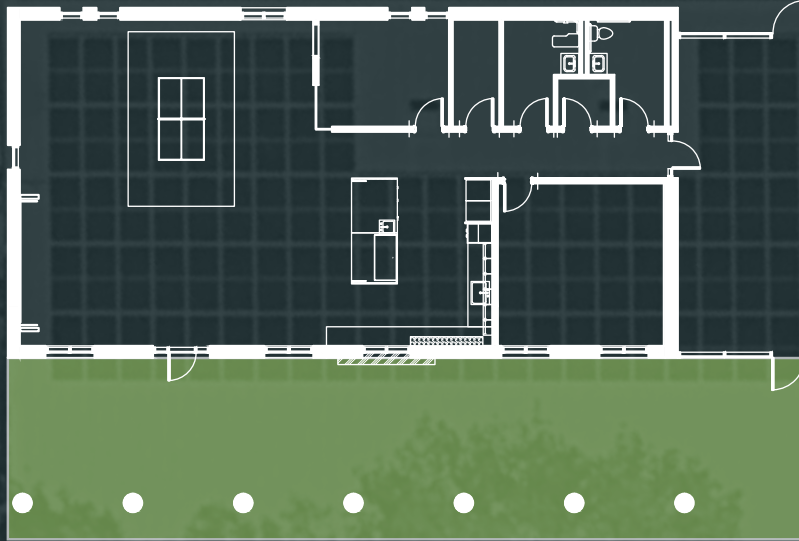


Multiple conference/meeting rooms

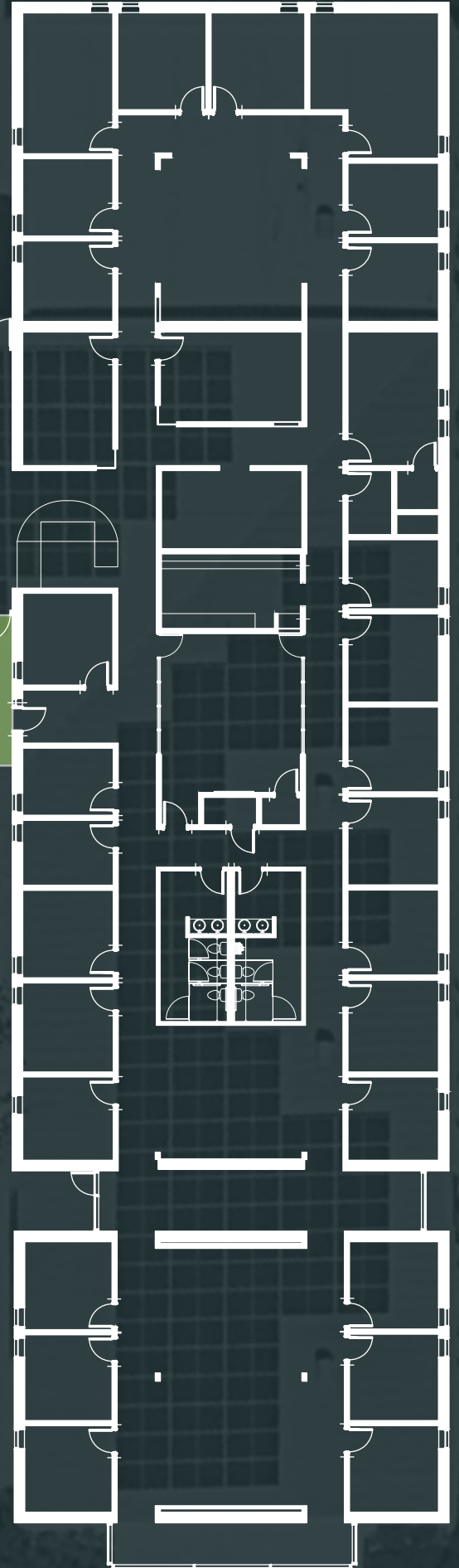


Private offices

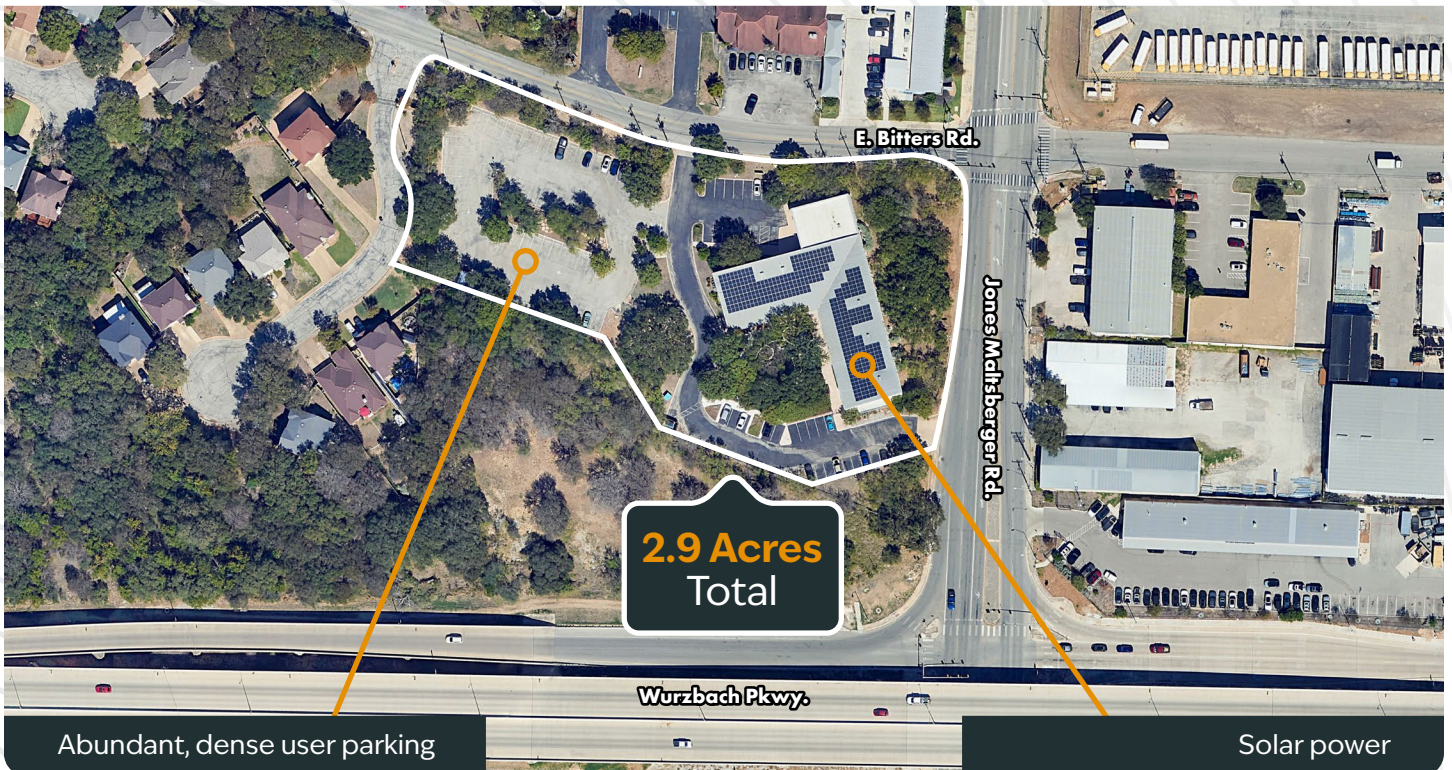
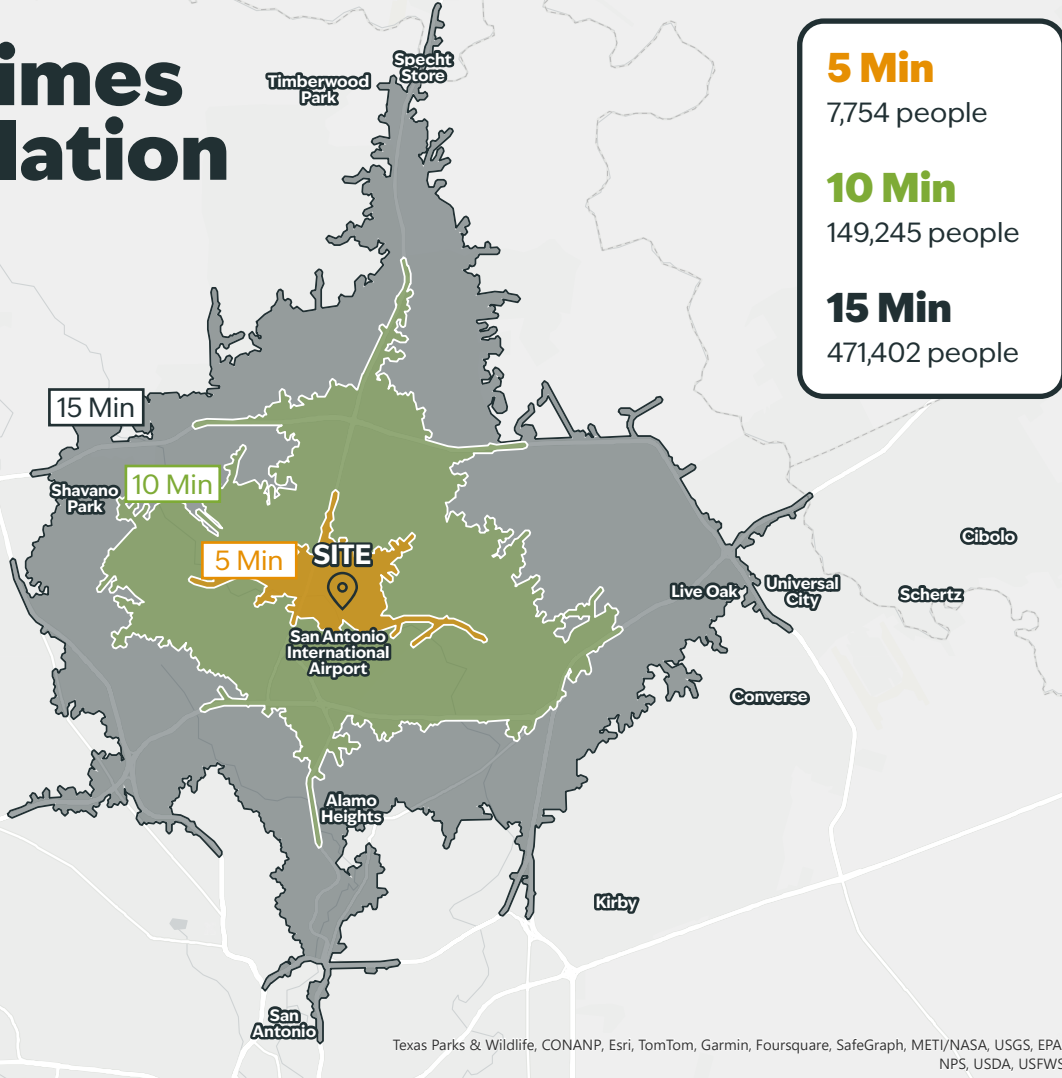
Office
14,773 SF

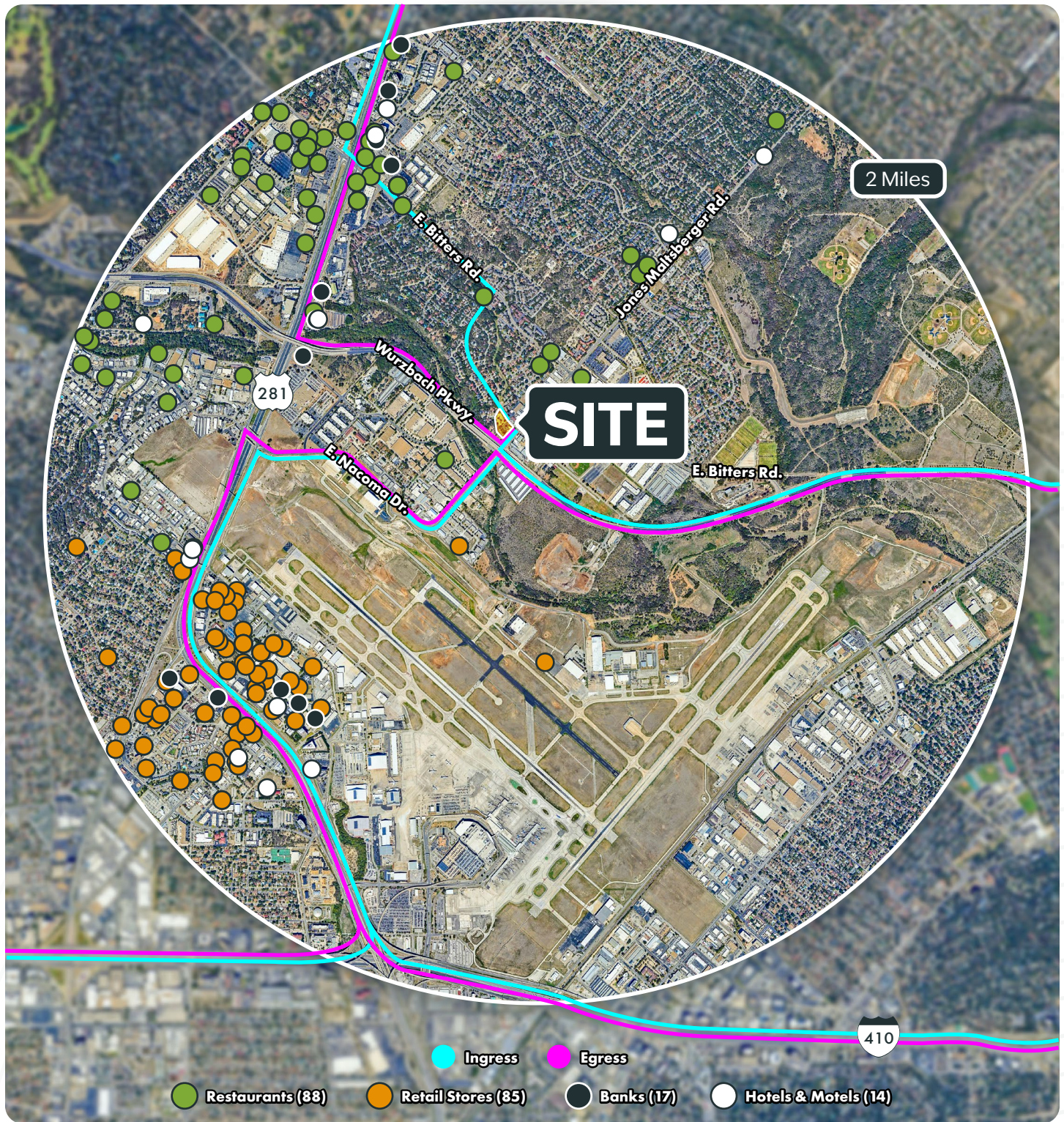


Activated Patio
1,714 SF



Drive Times & Population






Minutes

from San Antonio
International Airport


Immediate

access to the city via
Wurzbach Pkwy

Summary



Sale Price:
\$4,580,000.00



Lease Rate:
\$25.00/SF/YR
NNN



Parking:
103
Parking Spaces



Site:
2.9
Acres




STREAM



1390
E Bitters

San Antonio, TX 78216



Scott Ferguson

210.298.8531 | scott.ferguson@streamrealty.com

Copyright © 2024 Stream Realty Partners, All rights reserved.

The information contained herein was obtained from sources believed reliable; however, Stream Realty Partners, L.P. make no guarantees, warranties, or representations as to the completeness or accuracy thereof. The presentation of this property is submitted subject to errors, change of price, or conditions, prior sale or lease, or withdrawal without notice.