

FOR LEASE

RETAIL | FLEX SPACE

3939

SEPULVEDA BLVD

LOS ANGELES, CA 90064



WESTMAC

Commercial Brokerage Company

SCOTT GERTZ

310-966-4381

gertz@westmac.com

CHRIS HOLLAND

310-966-43450

holland@westmac.com

BUILDING INFO

PREMISES

Approximately 2,700 square feet

AVAILABLE

Immediately

RENTAL RATE

Ground Floor: \$3.25 per square foot per month, net net
net (*Triple net charges: ± \$0.39/sf/mo.*)

PARKING

4 - 5 spaces in the rear

COMMENTS

- » 1st time available in almost ±25 years
- » Great Street presence and generous building facade for signage
- » Easy ingress & Egress / direct 405 freeway access
- » Wide open interior layout
- » Rear Roll-up door
- » 3 phase/ 220 amps
- » Two (2) brand new fully ADA approved bathrooms
- » New electrical, plumbing, and window line
- » Polished concrete floors and re-designed rear parking lot area

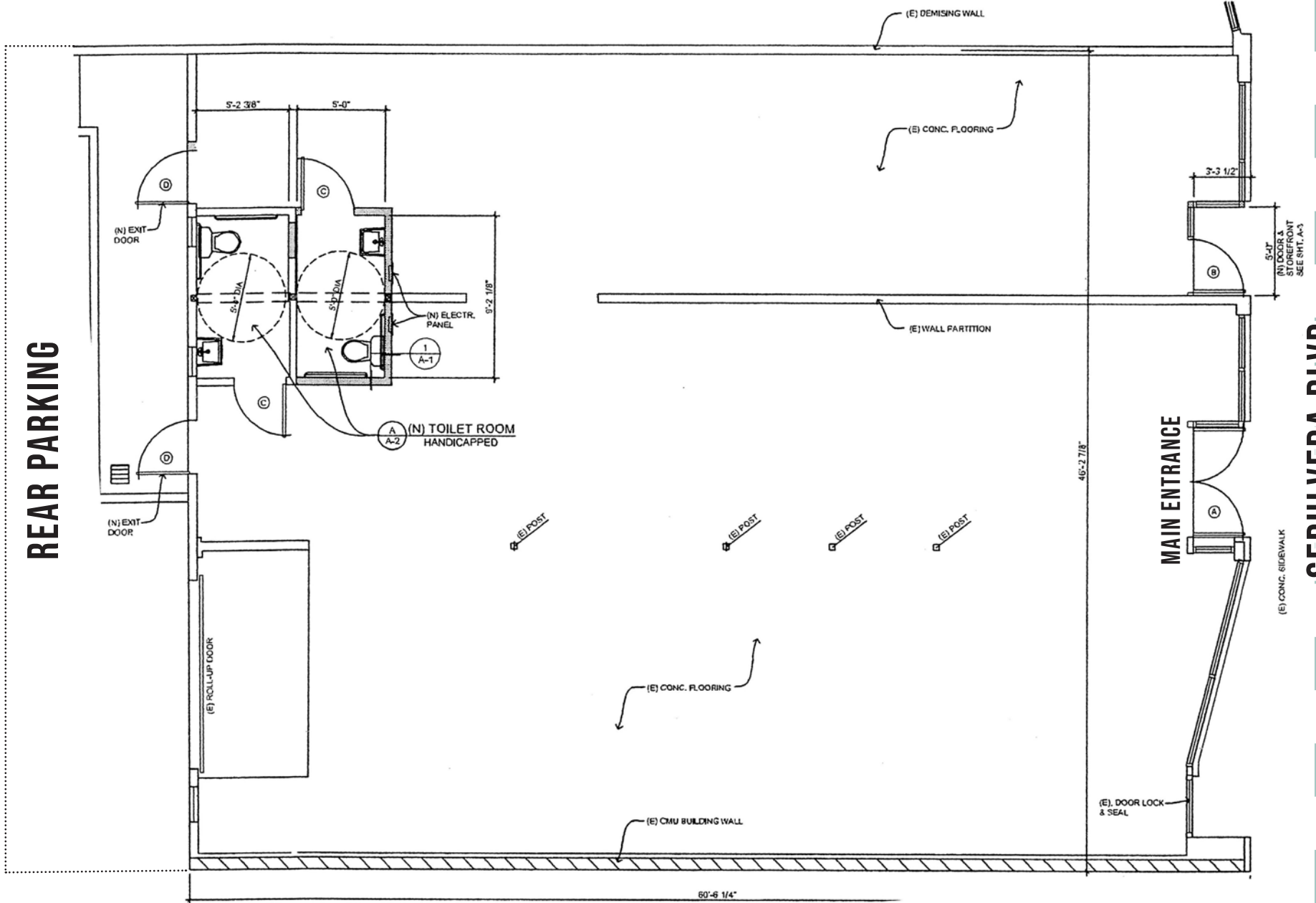


LOCAL AMENITIES



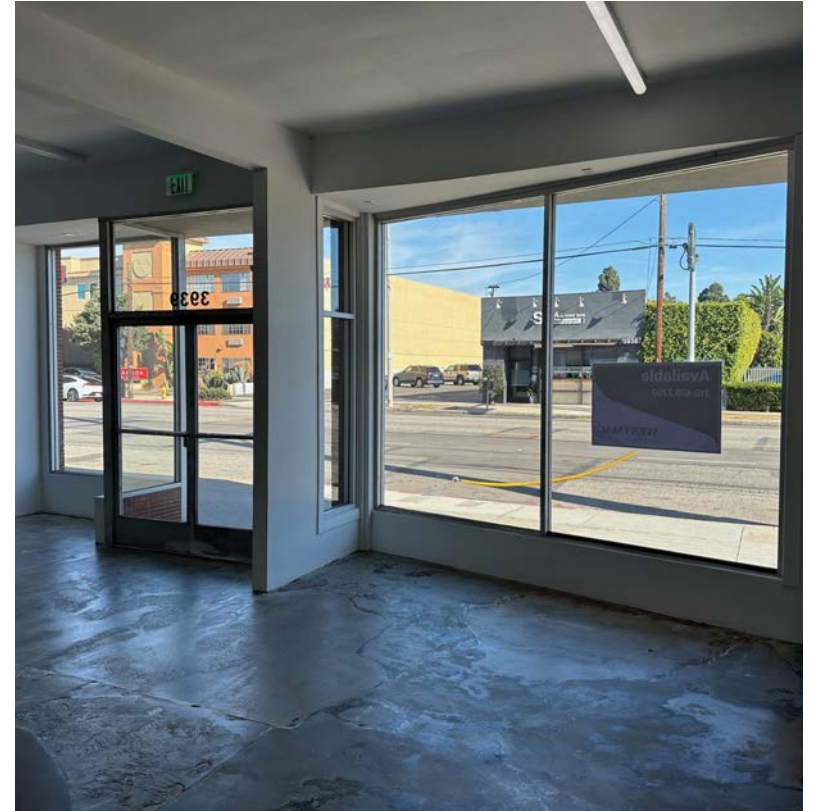
FLOOR PLAN

ALLEYWAY
REAR PARKING



SEPULVEDA BLVD

PROPERTY PHOTOS



3939 SEPULVEDA BOULEVARD



CONTACT THE PROPERTY AGENTS



SCOTT GERTZ
Executive Vice President
310-966-4381
Gertz@westmac.com
DRE #01295662

CHRIS HOLLAND
Managing Director
310-966-4350
Holland@westmac.com
DRE #00942434



WESTMAC Commercial Brokerage Company
1515 South Sepulveda Boulevard, Los Angeles, CA 90025
310-478-7700 | www.westmac.com
Company DRE #01096973