

Rosslyn's Value Play Destination
for Tenants Big and Small

1621 NORTH
KENT ST
Rosslyn Plaza East

1621 NORTH KENT ST

Property Overview

Situated just two blocks from the Rosslyn Metro, Rosslyn Plaza East is a 157,778 sf, 12-story building located in the center of Rosslyn. The building offers users direct access to Key Bridge, I-66, Route 110/50, Wilson Boulevard, and is within close walking distance to dozens of retail establishments as well as Georgetown. Upper floors feature unobstructed views of the Potomac River, Washington Monument and Roosevelt Island.

Rosslyn Plaza East offers tenants an ideal combination of location, views, proximity to a vibrant amenity base, and value for today's office tenants.



1621 NORTH KENT ST

Just Steps Away...



Dining

- 1 Ahra Café
- 2 Amuse at Le Meridien
- 3 Barley Mac
- 4 Bethesda Bagels
- 5 Capriotti's Sandwich Shop
- 6 CAVA
- 7 Chipotle Mexican Grill
- 8 Chop't
- 9 City House
- 10 Coffee Express
- 11 Compass Coffee
- 12 Connexion
- 13 Continental Pool Lounge
- 14 District Taco
- 15 Eclarions
- 16 Gong Cha
- 17 Guajillo Restaurant
- 18 Happy Eatery
- 19 Ice berry
- 20 Il Radicchio
- 21 Jimmy John's
- 22 Kanpai Japanese
- 23 McDonalds
- 24 Mele Bistro
- 25 Nando's Peri Peri
- 26 Open Kitchen
- 27 Open Road
- 28 Panera Bread
- 29 Pho 75
- 30 Quinn's on the Corner
- 31 Rhodeside Grill
- 32 Salt
- 33 Sfoglina Rosslyn
- 34 The Simple Greek
- 35 Sweet Green
- 36 Taco Rock
- 37 Thai Select
- 38 Vitality Bowl
- 39 Wiseguy New York Pizza

Banks

- 1 PNC Bank
- 2 Bank of America
- 3 Capital One Bank
- 4 Wells Fargo (ATM)
- 5 HSBC Bank
- 6 Suntrust (ATM)
- 7 Wells Fargo

Fitness

- 1 Gold's Gym
- 2 Verve Health & Fitness
- 3 Stryke
- 4 Orangetheory Fitness
- 5 BID Organized Fitness Events

Hotels

- 1 Le Meridien
- 2 Holiday Inn
- 3 Hyatt
- 4 Residence Inn
- 5 Courtyard
- 6 Key Bridge Marriott

I62I NORTH
KENT ST

ROSSLYN



ROSSLYN

Community - READY
ROSSLYNVA.ORG



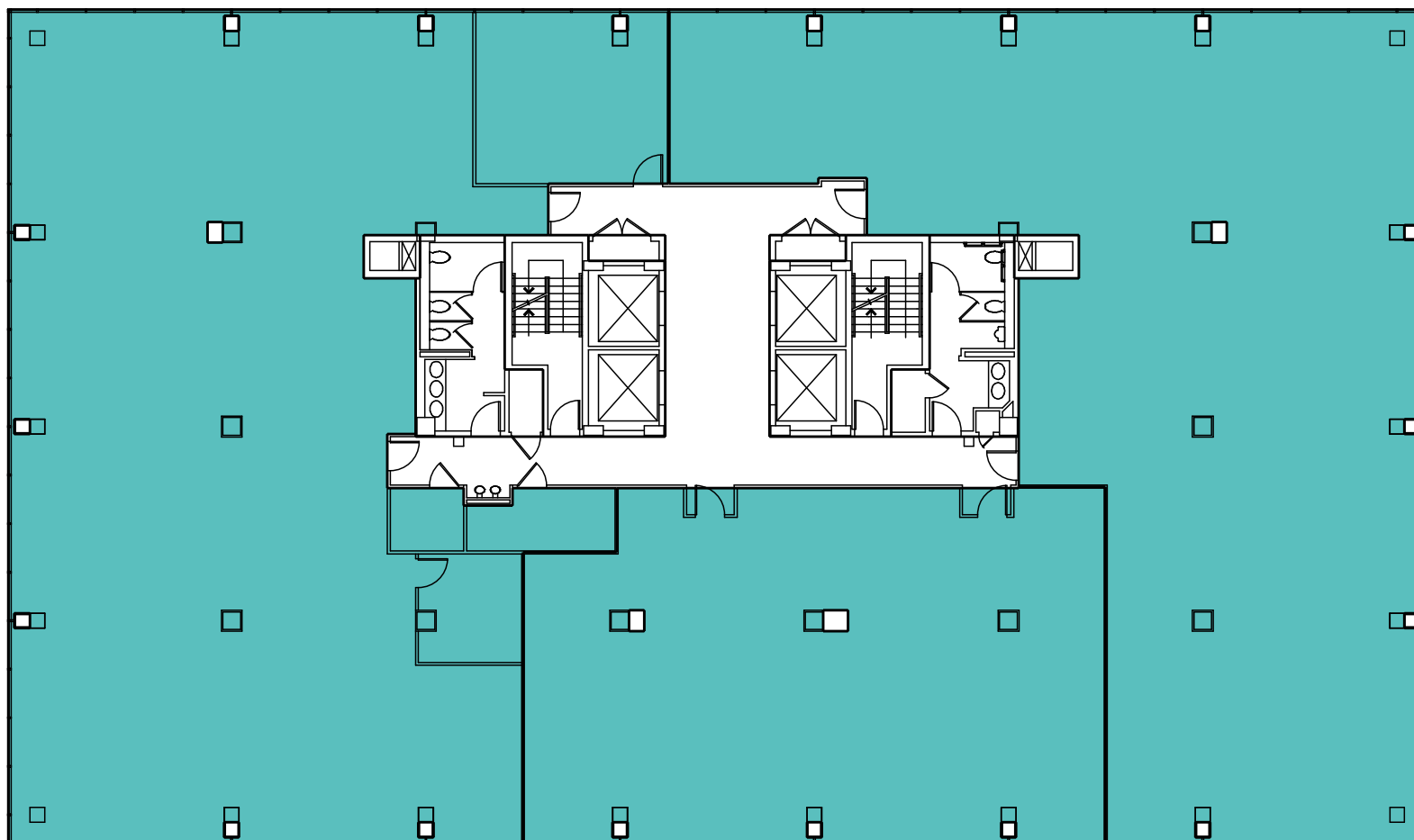
1621 NORTH KENT ST

Available Immediately
Second Floor | 13,132 sf

Suite 200 | 5,618 sf

Suite 215 | 2,622 sf

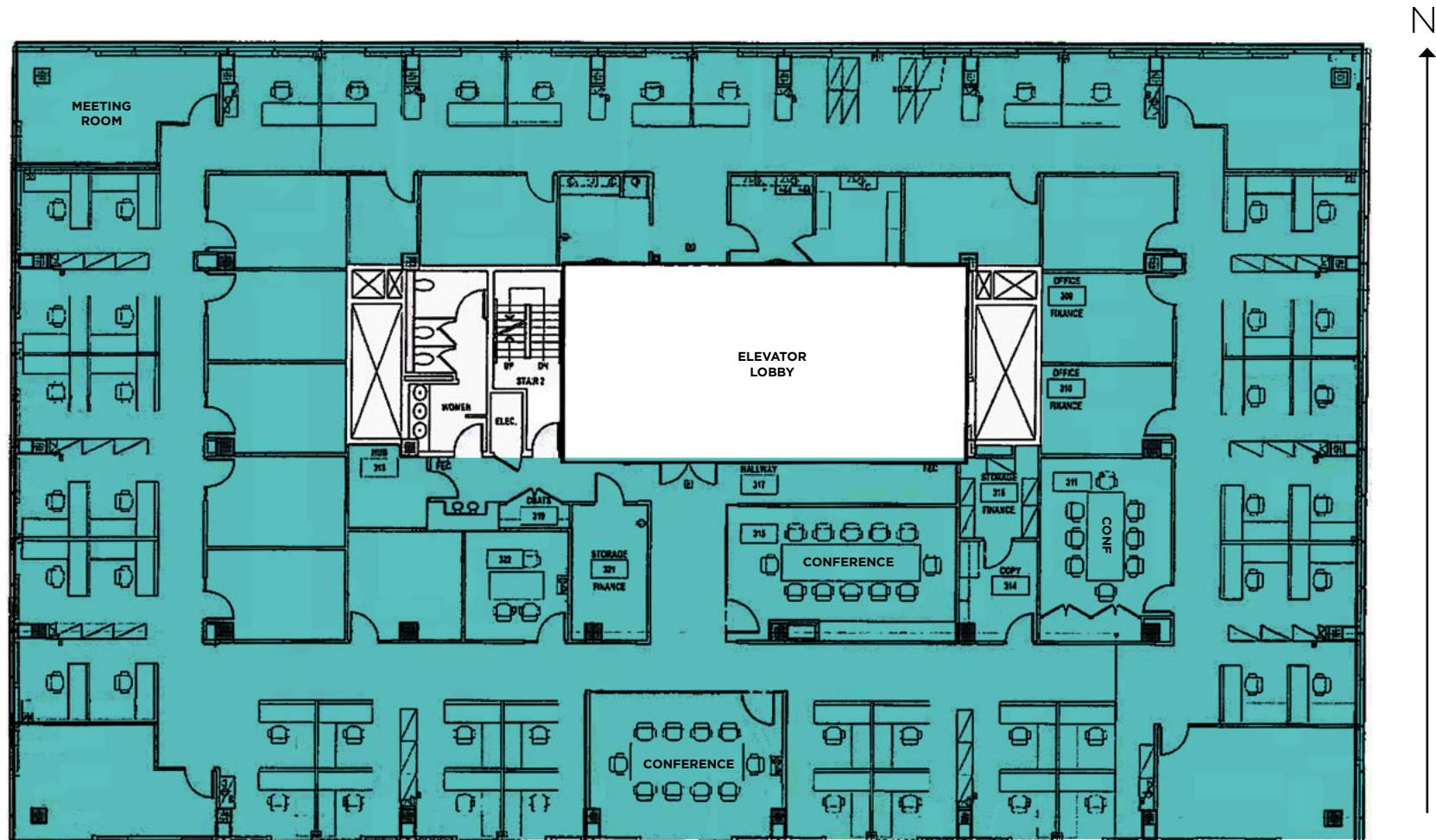
Suite 250 | 4,892 sf



AVAILABLE

1621 NORTH KENT ST

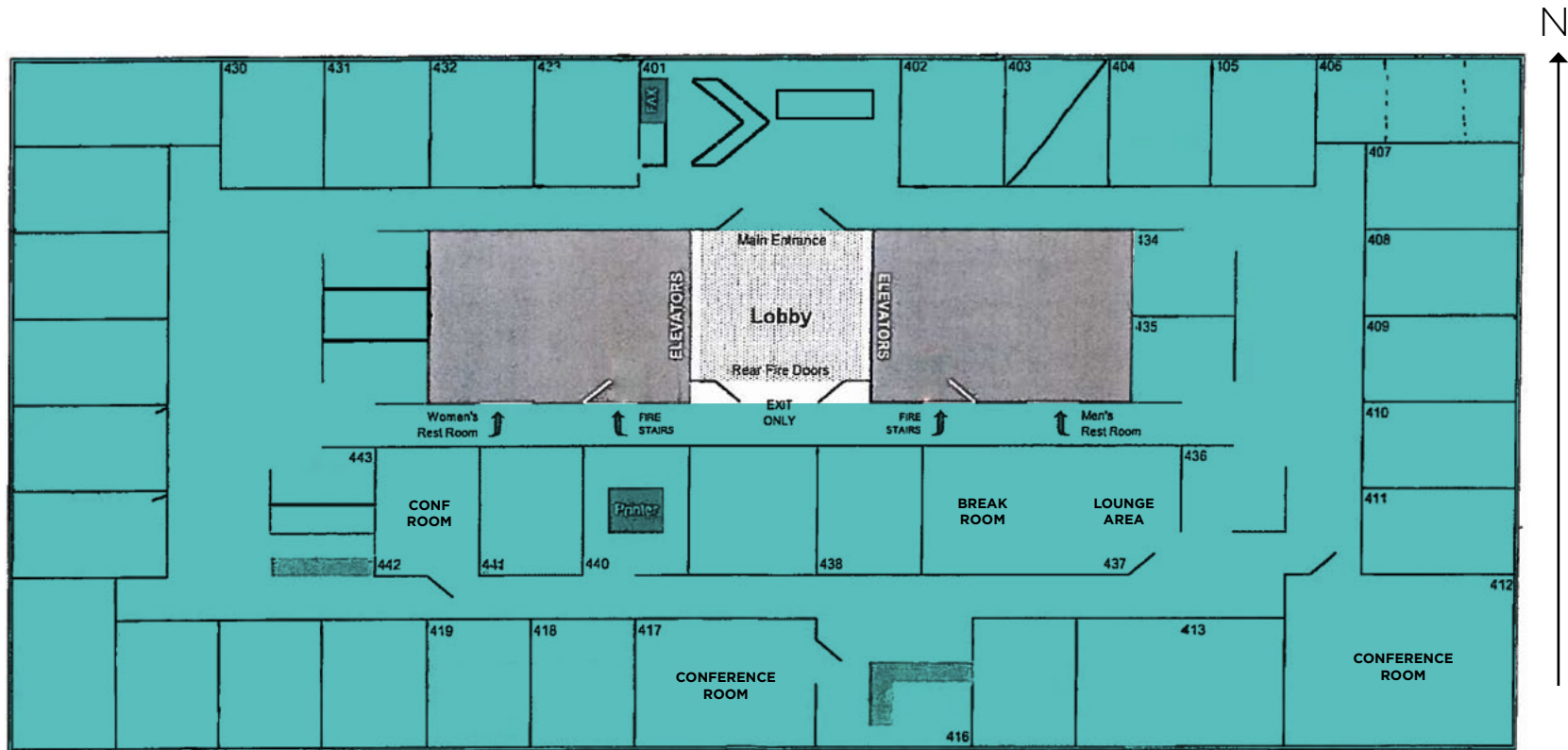
Available Immediately
Third Floor | 12,921 sf



AVAILABLE

1621 NORTH
KENT ST

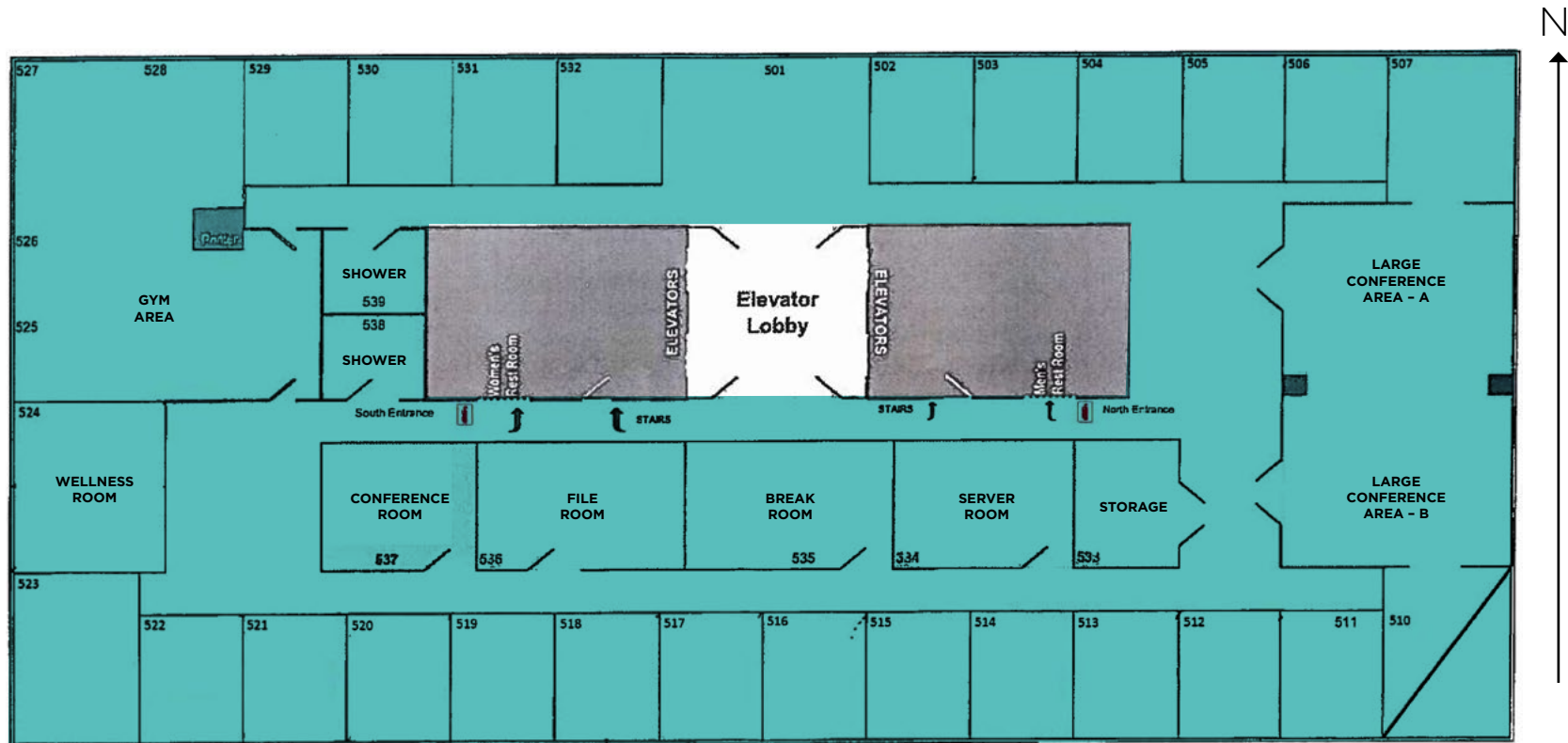
Available Immediately
Fourth Floor | 12,913 sf



AVAILABLE

1621 NORTH
KENT ST

Available Immediately
Fifth Floor | 12,913 sf



AVAILABLE

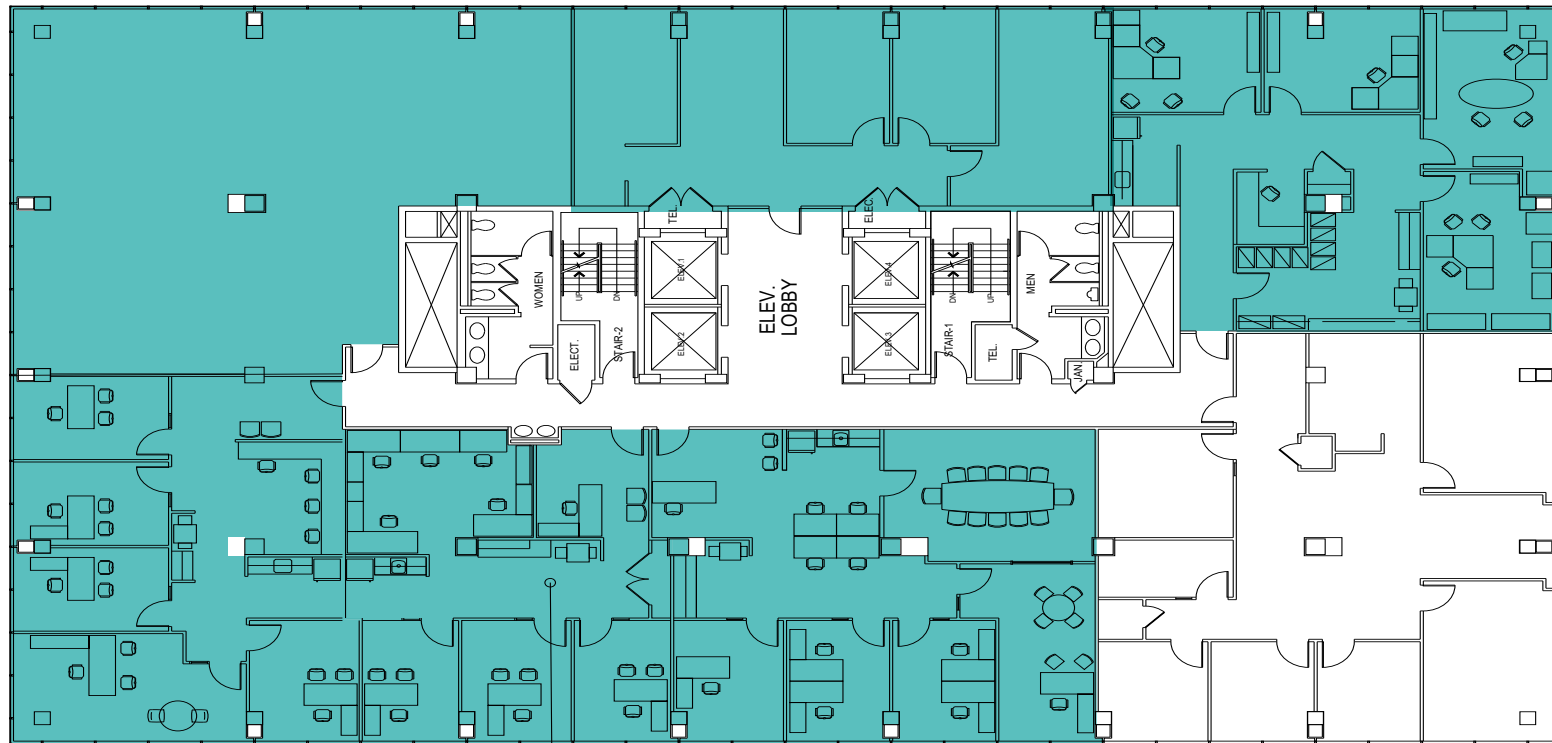
1621 NORTH KENT ST

Available Immediately
Sixth Floor | 10,525 sf

Suite 607 | 2,378 sf

Suite 601 | 1,447 sf

Suite 602 | 1,858 sf



N

Suite 606 | 1,686 sf

Suite 604 | 1,327 sf

Suite 605 | 1,829 sf

AVAILABLE

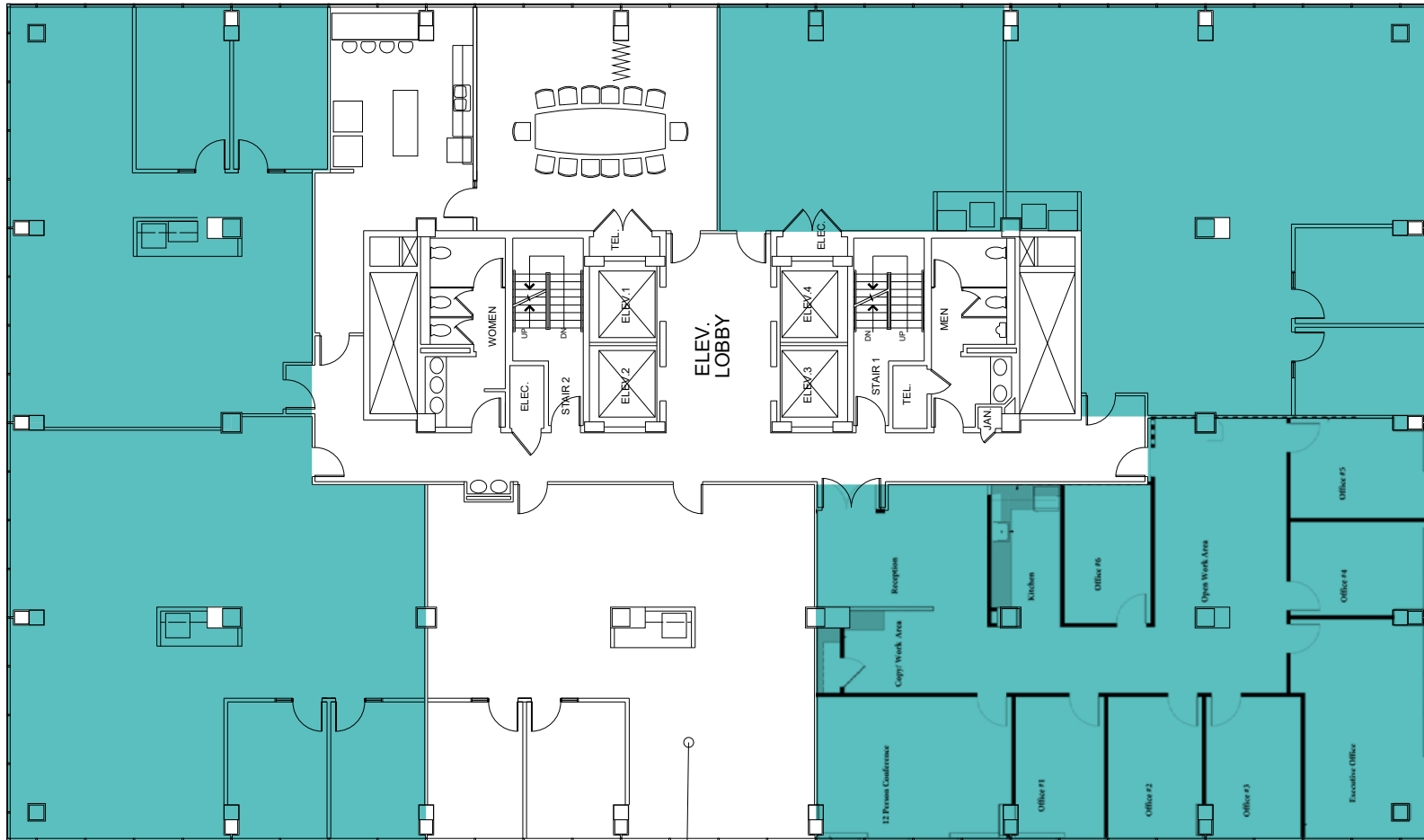
1621 NORTH KENT ST

Available Immediately
Seventh Floor | 10,920 sf

Suite 704 | 1,877 sf

Suite 706A | 932 sf

Suite 706B | 2,304 sf



Suite 703 | 2,403 sf

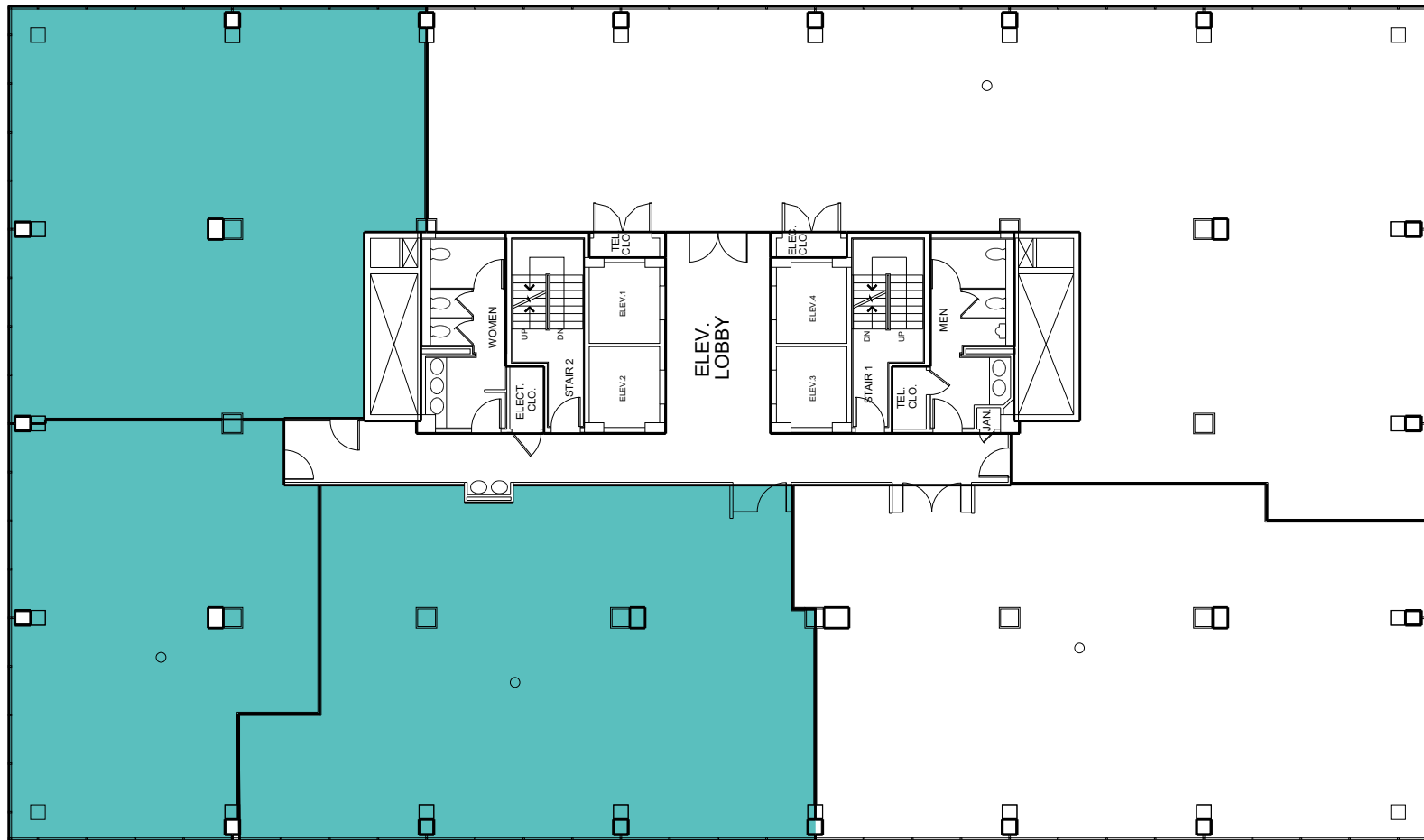
Suite 700 | 3,404 sf

AVAILABLE

1621 NORTH KENT ST

Available Immediately
Eighth Floor | 5,964 sf

Suite 801 | 2,077 sf



Suite 805 | 1,522 sf

Suite 812 | 2,365 sf

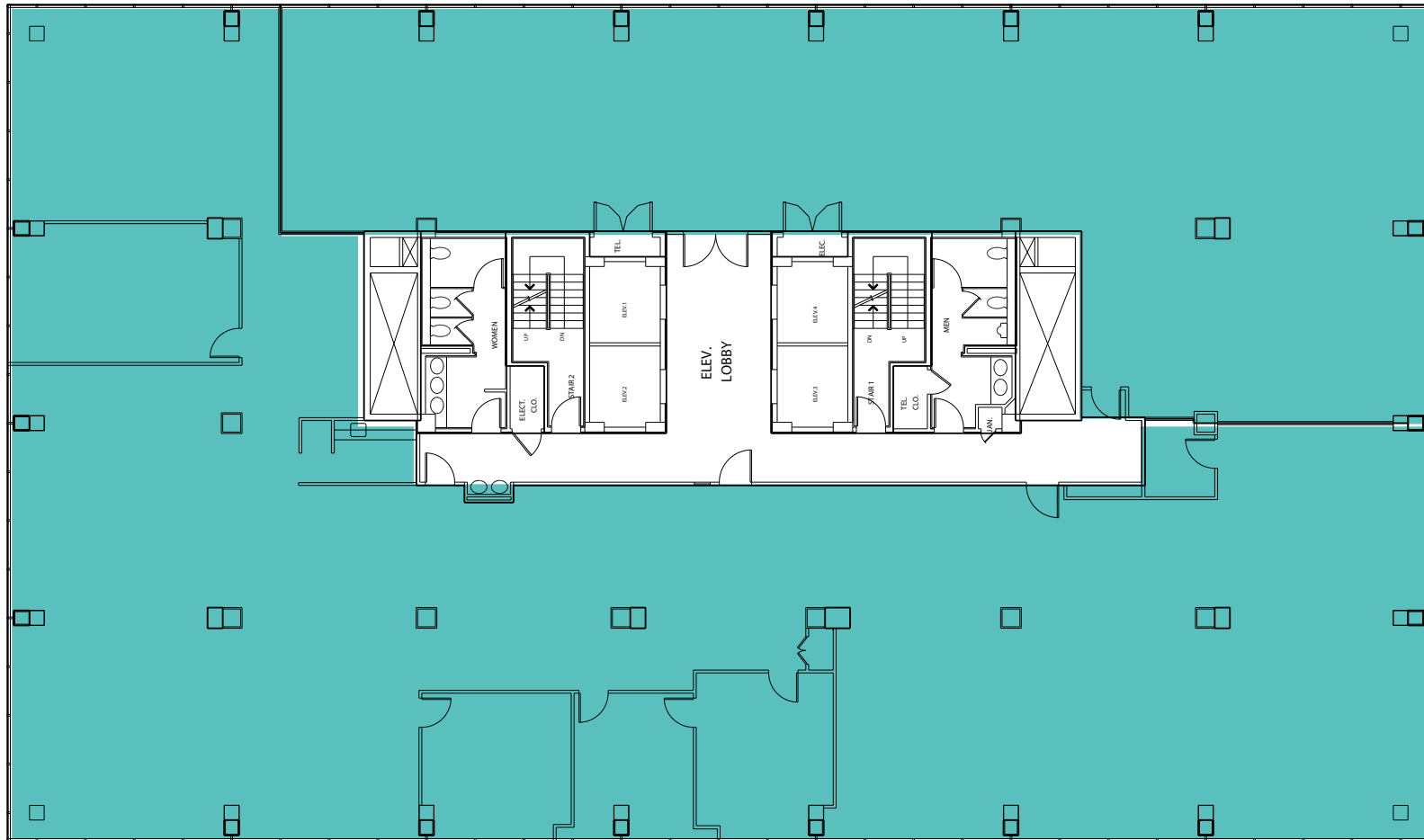
AVAILABLE

1621 NORTH
KENT ST

Available Immediately

Ninth Floor | 12,913 sf

Suite 900 | 4,196 sf



Suite 950 | 8,717 sf

AVAILABLE

1621 NORTH KENT ST

Available Immediately

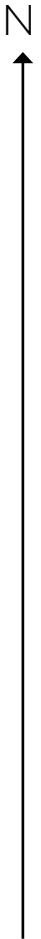
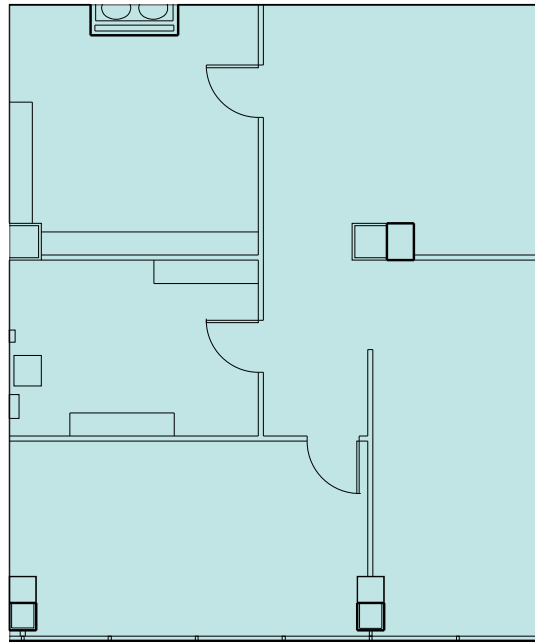
Furnished to Plug 'N Play
Suite 1100 | 8,093 sf



AVAILABLE

1621 NORTH
KENT ST

Available Immediately
Suite 1102 | 1,371 sf



AVAILABLE

1621 NORTH KENT ST

Leasing Information:

Avison Young
8300 Greensboro Dr., Suite 275
Tysons, VA 22102
703.288.2700

Peter Berk | Principal | 703.752.4920
Dave Millard | Principal | 703.752.4921



AVISON
YOUNG

VORNADO
CHARLES E. SMITH

© 2023 Avison Young – Washington, DC LLC. All rights reserved. The information contained herein was obtained from sources deemed reliable and is believed to be true; it has not been verified and as such, cannot be warranted nor form any part of any contract.