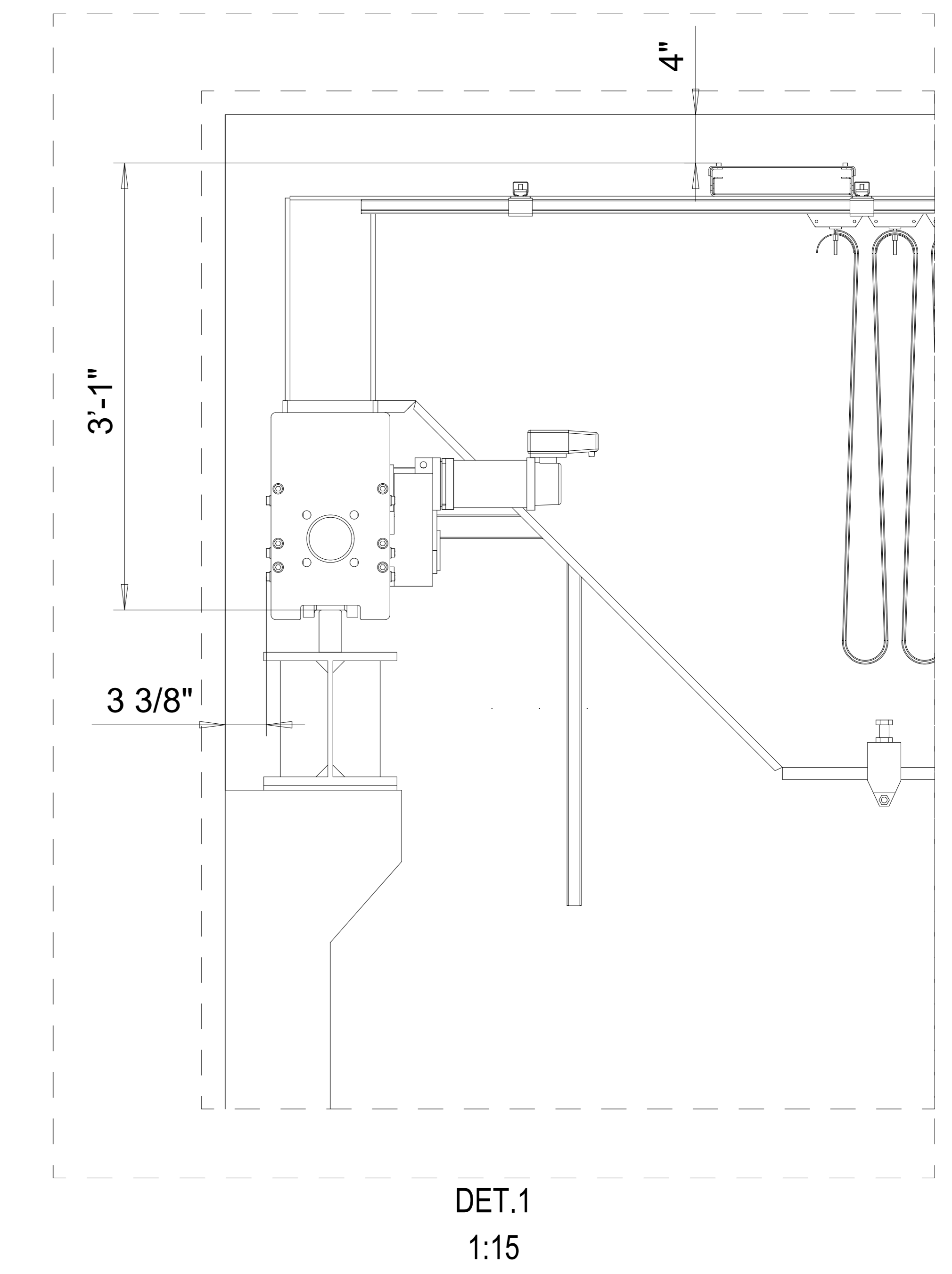
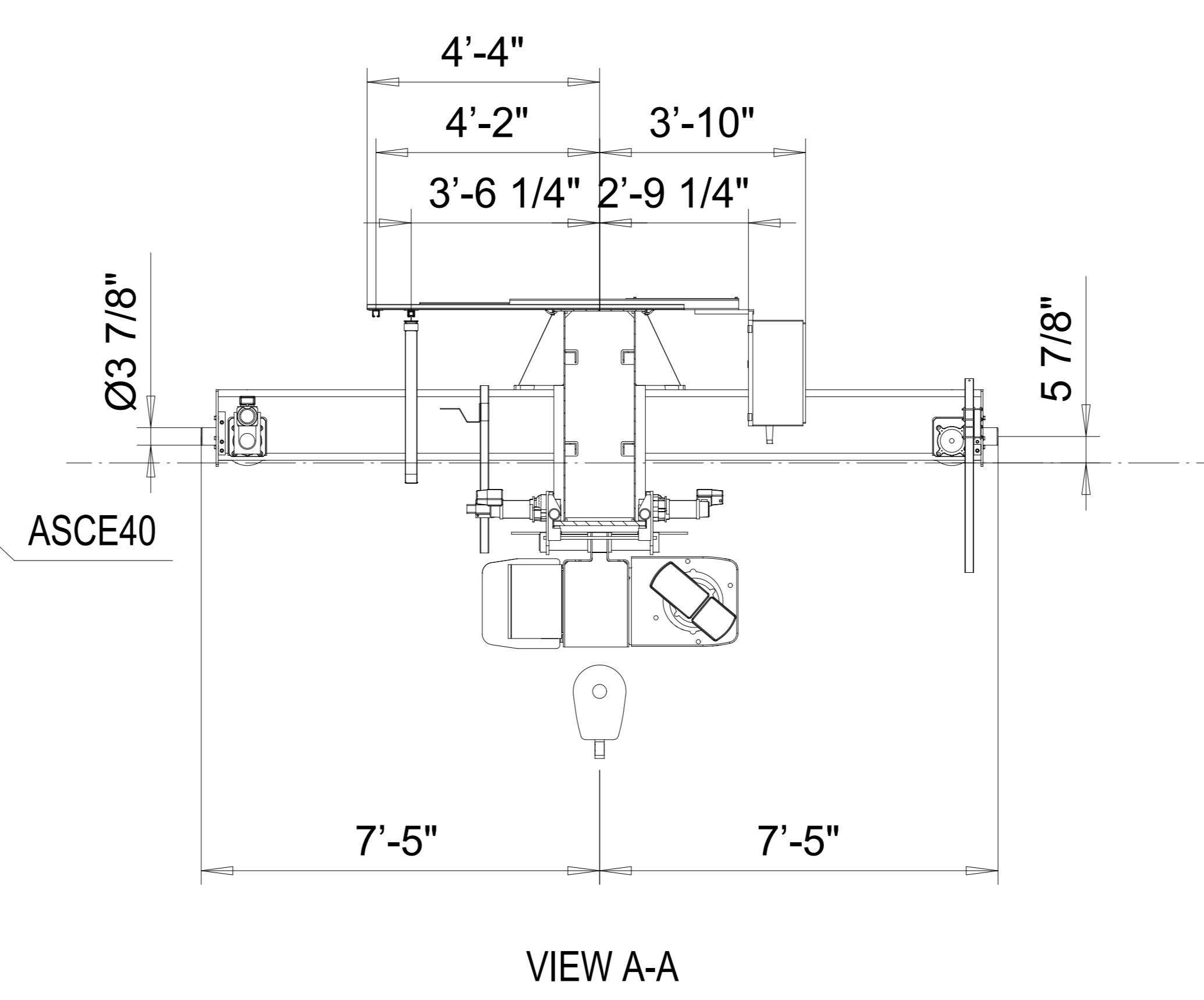
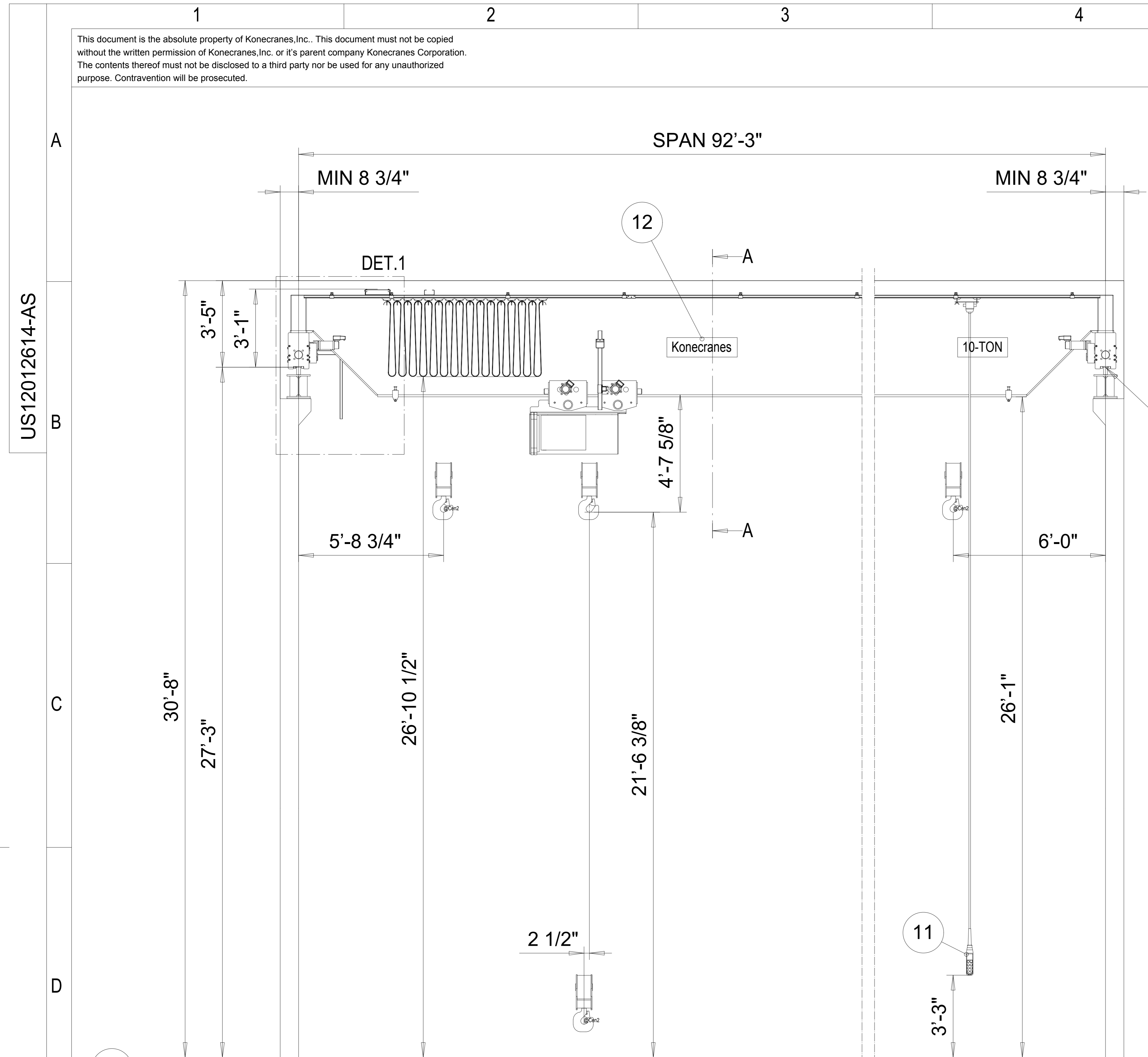


This document is the absolute property of Konecranes, Inc. This document must not be copied without the written permission of Konecranes, Inc. or its parent company Konecranes Corporation. The contents thereof must not be disclosed to a third party nor be used for any unauthorized purpose. Contravention will be prosecuted.

|             |             |      |            |            |  |  |  |
|-------------|-------------|------|------------|------------|--|--|--|
| Included in |             |      |            |            |  |  |  |
| Rev         | Explanation | Date | Revised by | Checked by |  |  |  |



**SURFACE TREATMENT OF CRANE**  
 BRIDGE COLOR : RAL1028  
 PAINT : W/127 µm  
 Crane is without service platform.  
 Service must be done from a separate platform for lifting persons  
 Indoor Use crane

**TECHNICAL DATA**

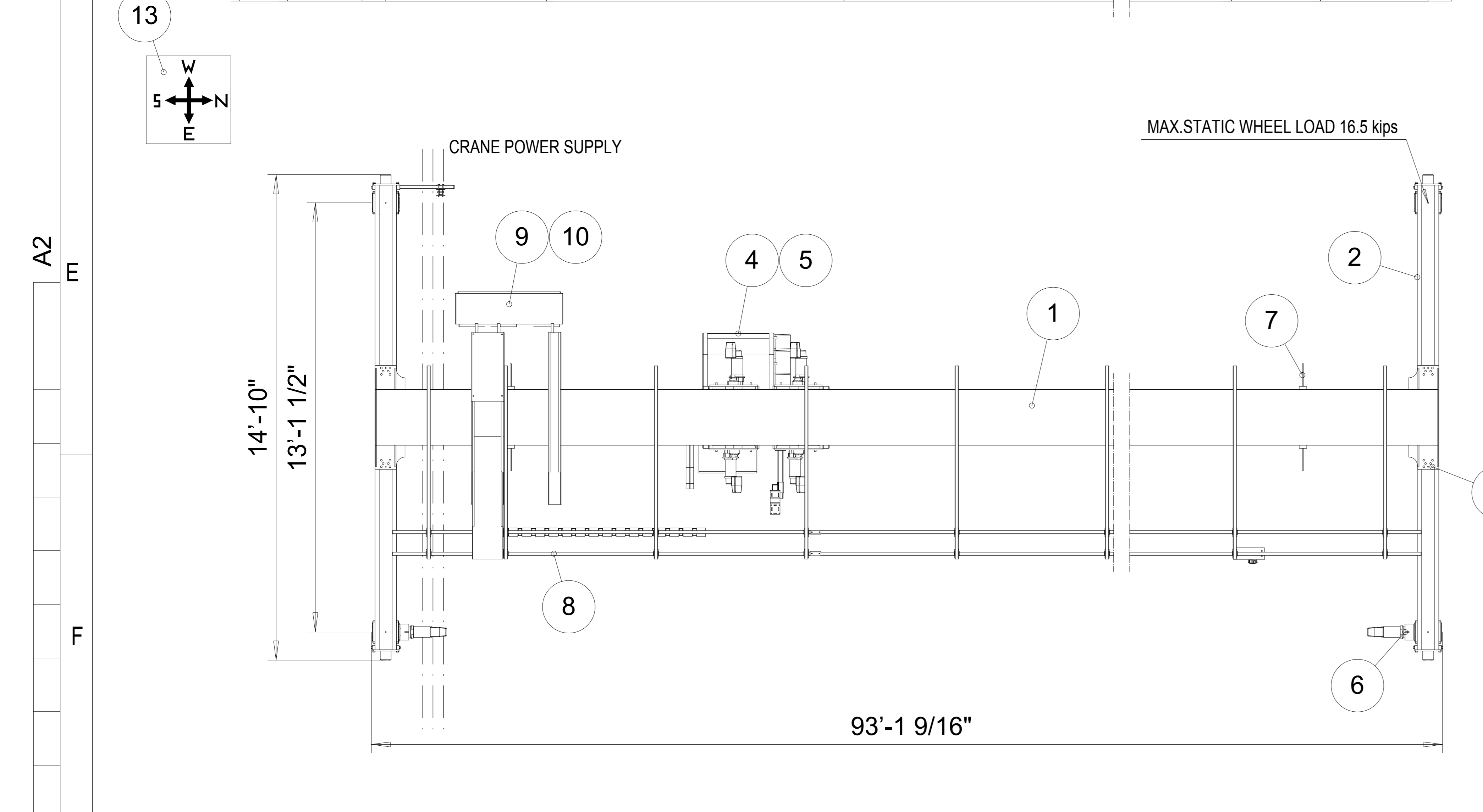
|                      |                           |
|----------------------|---------------------------|
| LOAD                 | : 10 TON                  |
| SPAN                 | : 92'-3"                  |
| LIFTING HEIGHT       | : 21'-6 3/8"              |
| HOISTING SPEED       | : 20.0/3.3 ft/min 2-speed |
| TRAVERSING SPEED     | : 65 ft/min stepless      |
| TRAVELLING SPEED     | : 100 ft/min stepless     |
| WEIGHT OF TROLLEY    | : 2230 lbs                |
| WEIGHT OF BRIDGE     | : 22601 lbs               |
| MAIN/CONTROL VOLTAGE | : 460 / 115 V; 60 Hz      |
| CRANE GROUP          | : CMAA 'D'                |
| HOIST GROUP          | : FEM M6                  |
| CRANE DRIVE GROUP    | : FEM M5                  |
| SUPPLY POWER         | : 22.32 Hp                |
| LENGTH OF RUNWAY     | : _____                   |

ACCEPTED BY:  
 COMPANY:  
 DATE:

**CERTIFIED FOR CONSTRUCTION**

04/28/2014

150138355



| Pos | Amount | Description         | Specification             |
|-----|--------|---------------------|---------------------------|
| 13  | 1      | DIRECTIONS LABEL    | COMPASS_2                 |
| 12  | 2      | SUPPLIER LABEL      |                           |
| 11  | 1      | PENDANT             | PENDAX08-2222NC00-083P0   |
| 10  | 1      | CRANE DRIVE CONTROL | DYNADRIIVE022FXXTAS       |
| 9   | 1      | ELECTRICS PANEL     | CRANELP6-1QQ600-76J0      |
| 8   | 1      | HOIST SUPPLY        | QQSMS13NXCP676281-        |
| 7   | 2      | END STOP            | MCF-B107-2                |
| 6   | 2      | CRANE DRIVE         | GES490PS2BOF06LA20P-6460E |
| 5   | 1      | HOIST DRIVE CONTROL | DYNADRIIVE022FXXTAS       |
| 4   | 1      | HOIST               | CXT50610120P66HEN0S       |
| 3   | 2      | JOINT PLATE         | B-TOP-H_-MED-S            |
| 2   | 2      | END CARRIAGE        | ECN25-4069-H70000C0000-N  |
| 1   | 1      | MAIN GIRDER         | US12012614-B              |

|                                  |                                 |                        |             |   |
|----------------------------------|---------------------------------|------------------------|-------------|---|
| Amrutpal Singh Matharu<br>Design | Manoj Varu<br>Chd               | Todd Langelaan<br>Appd | Ref drawing | US12012614<br>Vix proj                    |
| 04/22/2014<br>Date               | CXTS10-TON x 92.3ft Hol:21.53ft |                        |             |   |
| IEN<br>Dept                      | 10Ton TRSG Crane                |                        |             |   |
| KONECRANES®                      |                                 |                        |             | Lawrence Economic Development Corp (LEDC) |
| Konecranes, Inc.                 |                                 |                        |             | US12012614-AS                             |

1:50 / 1:20  
 M-film  
 Issue 1