



Loveton Business Park

47 & 53 Loveton Circle
Sparks, MD 21152



NAIOP
COMMERCIAL REAL ESTATE
DEVELOPMENT ASSOCIATION
NATIONAL
DEVELOPER
OF THE YEAR
— 2018 —

SJPI.COM | 410.788.0100

About Loveton Business Park

Loveton Business Park is a 15-acre business community located on Loveton Circle, just off York Road in Sparks, MD, minutes from Hunt Valley.

The unified architecture of St. John Properties' two buildings, comprising of 129,200 square feet of flex and office space, provides Loveton Business Park a campus-like business environment. Tenant sizes from 1,275 square feet to 78,234 square feet of space offer businesses straight-forward, economical and high utility space in a covenant-protected, well-maintained atmosphere. In the flex office building, 30 foot wide spaces combined with 16 foot high ceiling heights offer maximum flexibility. Free, generous parking is available adjacent to the buildings.

The attractive two-story office building offers direct access and tenant control of utilities in a generously landscaped executive environment.



For more information on Loveton Business Park, visit: sjpi.com/lovetonbusiness

Flex/R&D Building

47 Loveton Circle 78,234 SF

47 Loveton Circle Specifications

Suite Sizes	2,520 up to 78,234 SF
Ceiling Height	16 ft. clear minimum
Parking	4 spaces per 1,000 SF
Heat	Gas
Roof	EPDM rubber
Construction	Brick on block
Loading	Dock or drive-in
Zoning	ML

Two-Story Office Building

53 Loveton Circle 51,006 SF

53 Loveton Circle Specifications

Suite Sizes	1,275 up to 51,006 SF
Ceiling Height	9.5 ft. clear minimum
Parking	5 spaces per 1,000 SF
Heat: 1st Floor	Heat pump
Heat: 2nd Floor	Gas
Roof	EPDM rubber
Construction	Brick on block
Zoning	ML





Loveton Business Park | Site Plan



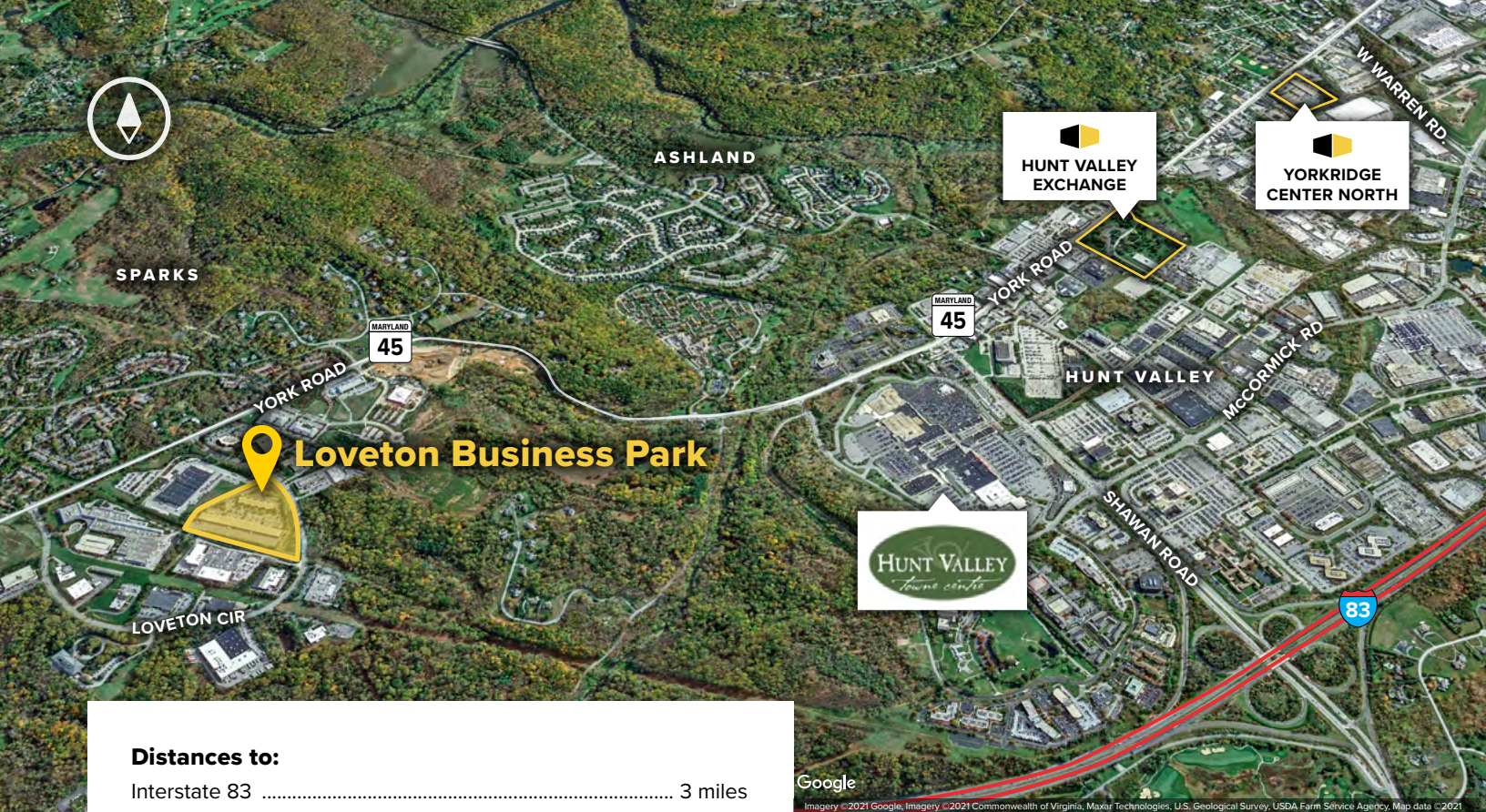
MARYLAND
45

YORK ROAD

LOVETON CIRCLE

SPARKS VALLEY ROAD





Distances to:

Interstate 83	3 miles
Timonium, MD	6 miles
Interstate 695 (Baltimore Beltway)	8 miles
Towson, MD	9 miles
Baltimore, MD (Downtown)	17 miles
BWI Airport	27 miles
York, PA	33 miles
Harrisburg, PA	58 miles

Contact Us

For additional leasing information or to schedule a tour, contact:

Stephanie Caronna

Leasing Representative

scaronna@sjpi.com | 410.369.1235

Corporate Headquarters:

2560 Lord Baltimore Drive | Baltimore, MD 21244

410.788.0100 | SJPI.COM



About St. John Properties

St. John Properties, Inc. is one of the nation's largest and most successful privately held commercial real estate firms. The company owns, manages, and has developed office, flex/research and development, warehouse, retail, and multifamily space nationwide.

Connect with us @stjohnprop



This information contained in this publication has been obtained from sources believed to be reliable. St. John Properties makes no guarantee, warranty or representation about this information. Any projections, opinions, assumptions or estimates used here are for example only and do not represent the current or future performance of the property. Interested parties should conduct an independent investigation to determine whether the property suits their needs. REV 04/25