

## PROPERTY INFORMATION

Property: 110 Mary Street, Suite 7  
Nipomo, CA

Lease Rate: \$2.25/SF NNN ( $\pm$  \$0.65)

Lease Size:  $\pm$ 1,300 sq. ft.

Type: Retail / Office

Zoning: CR (Commercial Retail)

Parking: Ample, On-Site

Traffic Counts: HWY 101 66,000 ADT  
Tefft Street 17,000 ADT

Available: Now

Highlights: One block from HWY 101  
And Tefft Street off ramps, at Mary Ave.  
Attractive, newer center. Neighbors are  
Starbucks, Wells Fargo, Vons, CVS and  
Miner's Hardware. This space will  
Accommodate retail, office, medical or  
Many other uses.

FOR LEASE  
 $\pm$ 1,300 SQ. FT. RETAIL SPACE



### CONTACT:

ROD TRUJILLO

OWNER/BROKER

DRE #01388764

CELL: 805.703.0999

ROD@TRUJILLO-GROUP.COM

The information contained herein has been obtained from the owner of the property or from other sources deemed reliable. While we have no reason to doubt its accuracy, we do not guarantee it.

**TRUJILLO**  
Commercial Real Estate  
**GROUP**

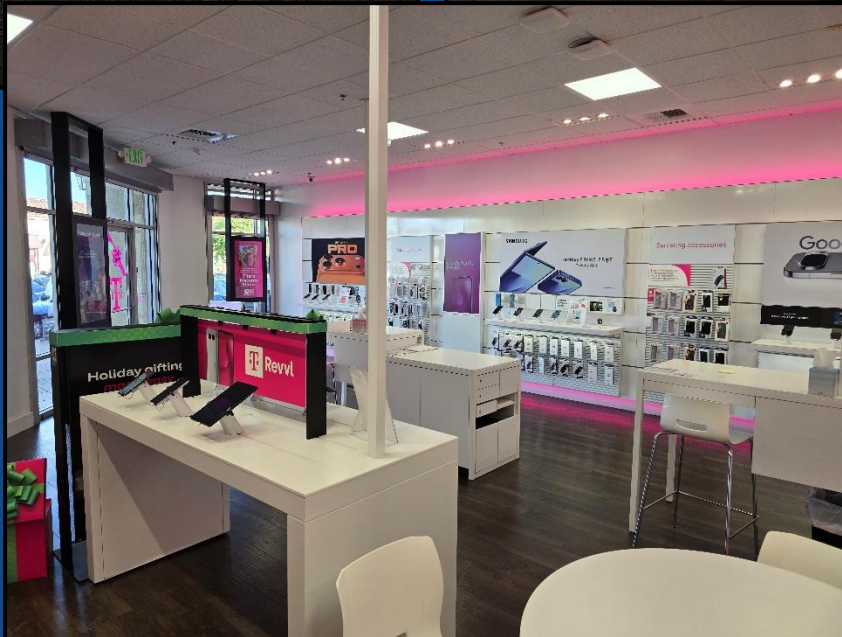
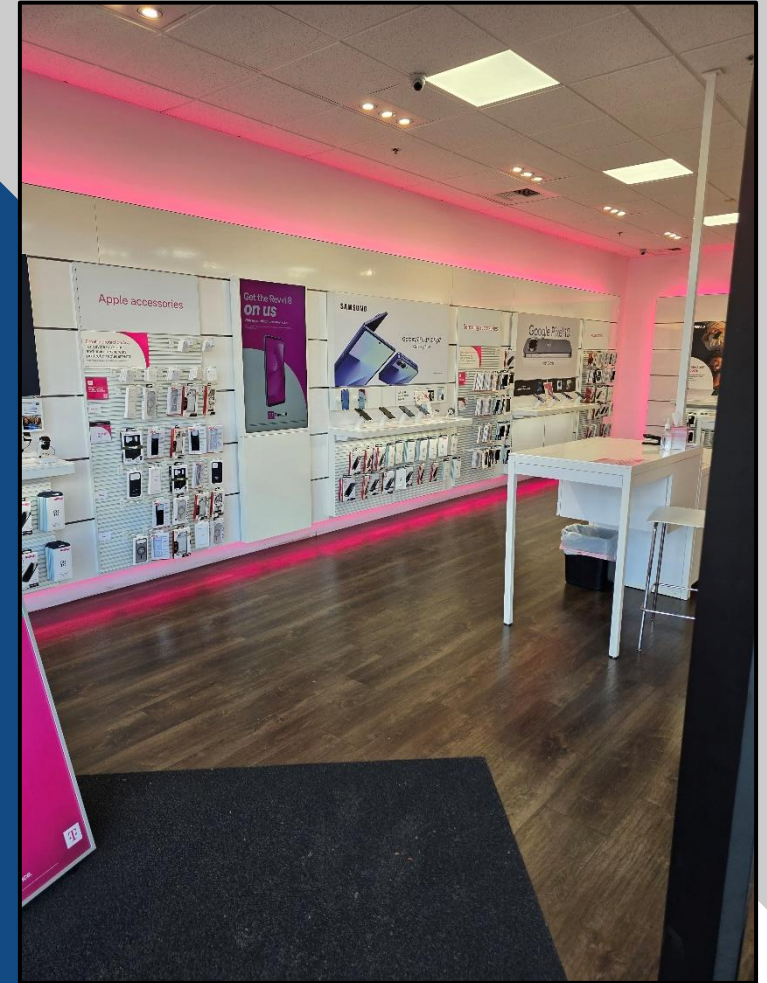
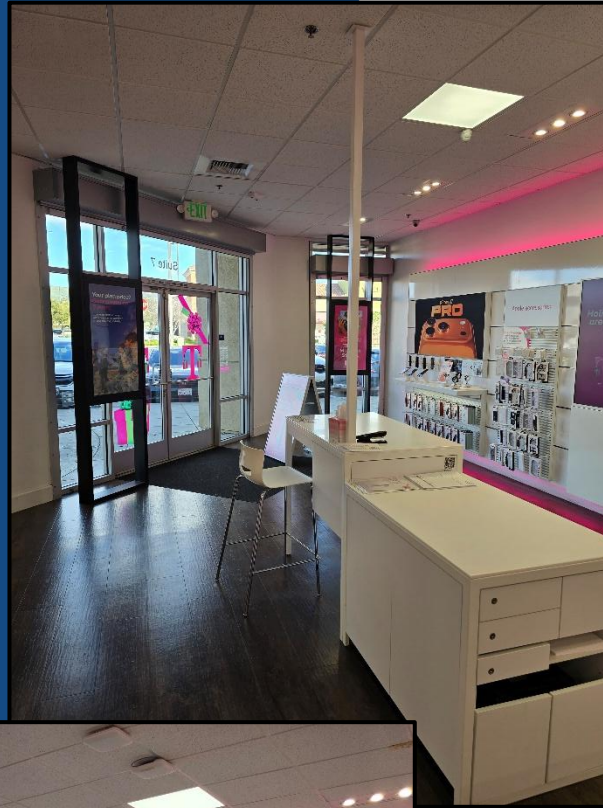
570 Marsh St. | San Luis Obispo, CA 93401

[www.Trujillo-Group.com](http://www.Trujillo-Group.com)



## INTERIOR PHOTOS

FOR LEASE  
±1,300 SQ. FT. RETAIL SPACE



**TRUJILLO**   
Commercial Real Estate  
**GROUP**

570 Marsh St. | San Luis Obispo, CA 93401

[www.Trujillo-Group.com](http://www.Trujillo-Group.com)

The information contained herein has been obtained from the owner of the property or from other sources deemed reliable. While we have no reason to doubt its accuracy, we do not guarantee it.



## EXTERIOR PHOTOS



FOR LEASE  
±1,300 SQ. FT. RETAIL SPACE



### CONTACT:

ROD TRUJILLO  
OWNER/BROKER

DRE #01388764

CELL: 805.703.0999

ROD@TRUJILLO-GROUP.COM

**TRUJILLO**   
Commercial Real Estate  
**GROUP**

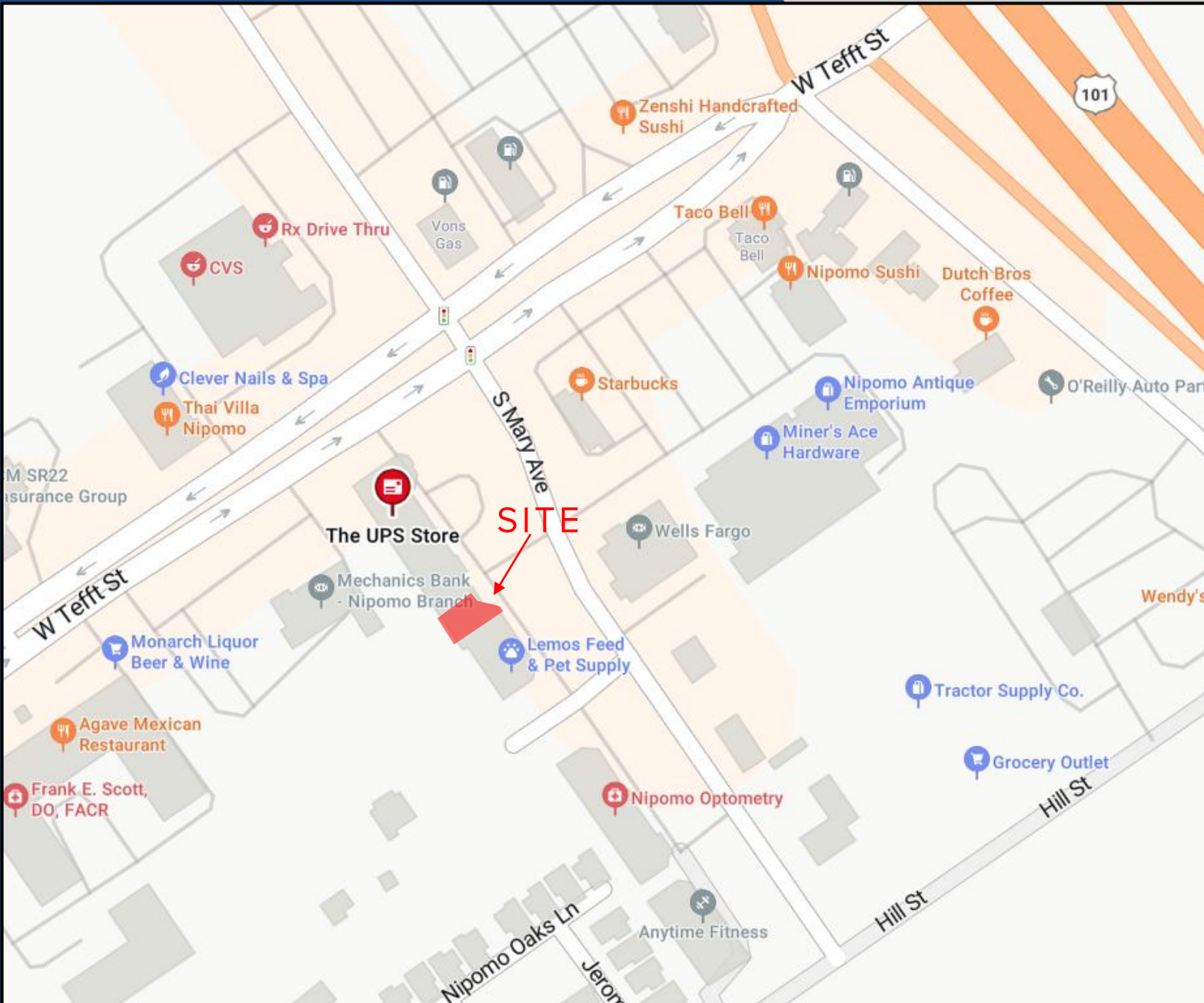
570 Marsh St. | San Luis Obispo, CA 93401

[www.Trujillo-Group.com](http://www.Trujillo-Group.com)

The information contained herein has been obtained from the owner of the property or from other sources deemed reliable. While we have no reason to doubt its accuracy, we do not guarantee it.

## Location Map

FOR LEASE  
±1,300 SQ. FT. RETAIL SPACE



**TRUJILLO**  
Commercial Real Estate  
GROUP

The information contained herein has been obtained from the owner of the property or from other sources deemed reliable. While we have no reason to doubt its accuracy, we do not guarantee it.

570 Marsh St. | San Luis Obispo, CA 93401