



**1)212 FRONT ST.
STORE+WAREHOUSE 2)2
FL.OFFICE**

212-218 Front St, Hempstead, NY 11550



Vivian Lam
CPRE Elite Inc.
37-12 Prince St, Suite 9A, Flushing, NY 11354
vivian978978@hotmail.com
(646) 678-9555



1)212 FRONT ST. STORE+WAREHOUSE 2)2 FL.OFFICE

\$20.00 - \$24.00 /SF/YR

-----210 FRONT ST SHOWROOM (Leased)

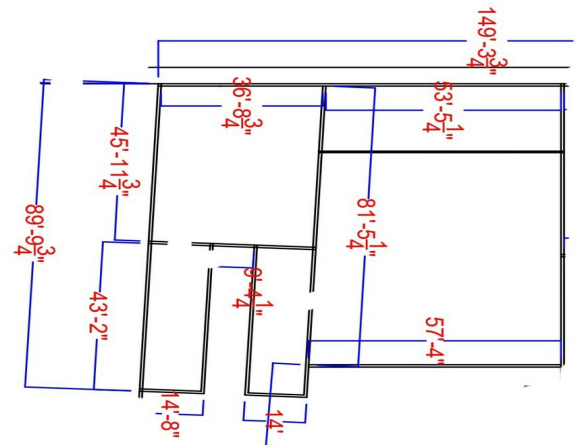
- * 1st. FLOOR
- * 2,100 SF showroom/storage
- * Available immediately
- * Directly opposite Home Depot
- * High traffic area in heart of Hempstead
- * Close to public transportation and shops.
- * 2 Parking space access from side door

-----212 FRONT ST SHOWROOM AVAILABLE

- * 1st. FLOOR
- * 5,360 SF showroom/storage
- * Available immediately
- * Directly opposite Home Depot
- * High traffic area in heart of Hempstead
- * Close to public transportation and shops.
- * 3 Parking space

-----218...

- High traffic area in heart of Hempstead
- Lots of natural light



Rental Rate:	\$20.00 - \$24.00 /SF/YR
Property Type:	Industrial
Property Subtype:	Warehouse
Rentable Building Area:	30,000 SF
Year Built:	1929
Rental Rate Mo:	\$2.00 /SF/MO

218 FRONT ST. RENT
New York, NY 10012 **\$ 4,291 /mon**



- 2,576 SF office space | 2nd floor | Parking Space: 2
- Corner signalized intersection
 - Available immediately
 - Directly opposite Home Depot
 - High traffic area in heart of Hempstead
 - Close to public transportation and shops.

PRE 917-920-0022 | Vivian Lam 646-678-9555

1st Floor

Space Available	5,360 SF
Rental Rate	\$24.00 /SF/YR
Date Available	Now
Service Type	Negotiable
Space Type	Relet
Space Use	Industrial
Lease Term	Negotiable

-----210 FRONT ST. -----* 2,400 SF* Retail showroom* Ample power and gas heat on site* Business -B* Directly opposite Home Depot* High traffic area in heart of Hempstead* Close to public transportation and shops. * Available immediately* 2 Parking space-----212 FRONT ST-----* 5,360 SF* Retail showroom with warehouse in rear. * One loading door* Ample power and gas heat on site* Business -B* Directly opposite Home Depot* High traffic area in heart of Hempstead* Close to public transportation and shops. * 3 Parking space-----218 FRONT ST OFFICE-----* 2nd FLOOR* 2,575 SF office space for lease* Corner signalized intersection* Available immediately* Directly opposite Home Depot* High traffic area in heart of Hempstead* Close to public transportation and shops. * 2 Parking space

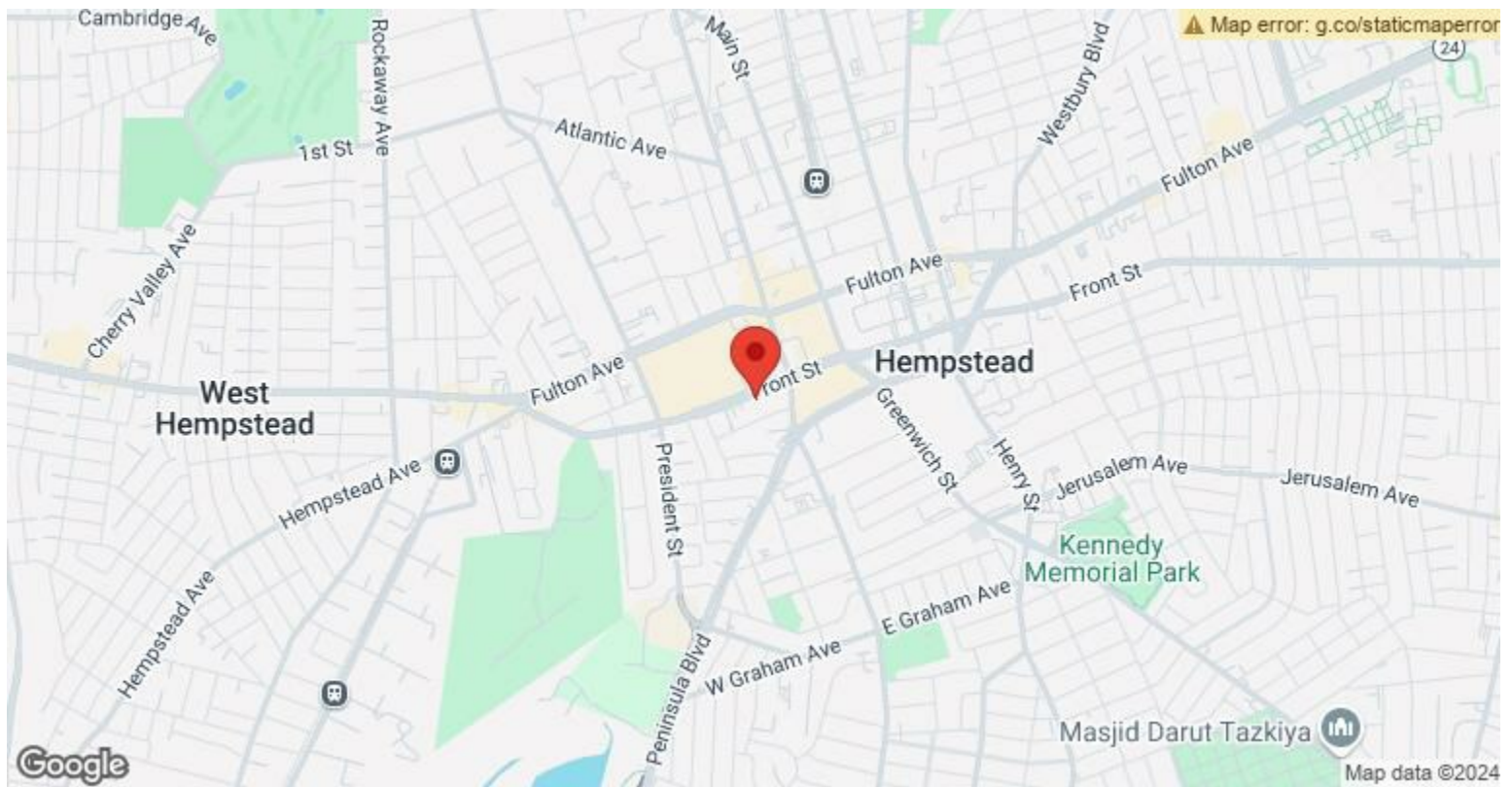
1

2nd Floor

Space Available	2,575 SF
Rental Rate	\$20.00 /SF/YR
Date Available	Now
Service Type	Plus All Utilities
Space Type	Relet
Space Use	Office
Lease Term	Negotiable

The entire 2nd floor office space for lease. Tenants can modify the use of the spaces. Currently it has multiple office rooms, conference rooms, storage, and 2 restrooms. Lots of windows provide sun lights. Suitable to be used by all kind of professional offices. Independent entrance with two private parking spaces is included. In heart of Hempstead are close to public transportation and shops.

2



212-218 Front St, Hempstead, NY 11550

-----210 FRONT ST SHOWROOM (Leased)

- * 1st. FLOOR
- * 2,100 SF showroom/storage
- * Available immediately
- * Directly opposite Home Depot
- * High traffic area in heart of Hempstead
- * Close to public transportation and shops.
- * 2 Parking space access from side door

-----212 FRONT ST SHOWROOM AVAILABLE

- * 1st. FLOOR
- * 5,360 SF showroom/storage
- * Available immediately
- * Directly opposite Home Depot
- * High traffic area in heart of Hempstead
- * Close to public transportation and shops.
- * 3 Parking space

-----218 FRONT ST OFFICE----- AVAILABLE

- * 2nd FLOOR ONLY
- * 2,575 SF office space for lease
- * Corner signalized intersection
- * Available immediately
- * Directly opposite Home Depot
- * High traffic area in heart of Hempstead
- * Close to public transportation and shops.
- * 2 private Parking spaces

Contact/TEXT exclusive Listing Agent 646-678-9555 Vivian Lam

Property Photos

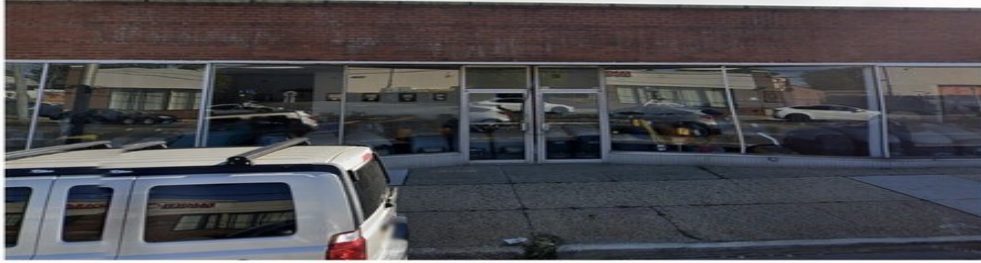
212 FRONT ST.

New York, NY 10012

RENT

\$ 10,720 /mon

**FOR
LEASE**



Area: 5,360 SF

Business -B

Parking Space: 3

- Retail showroom
- Ample power and gas heat on site
- Directly opposite Home Depot
- High traffic area in heart of Hempstead
- Close to public transportation and shops.
- Available immediately



PRE 917-920-0022 | Vivian Lam 646-678-9555

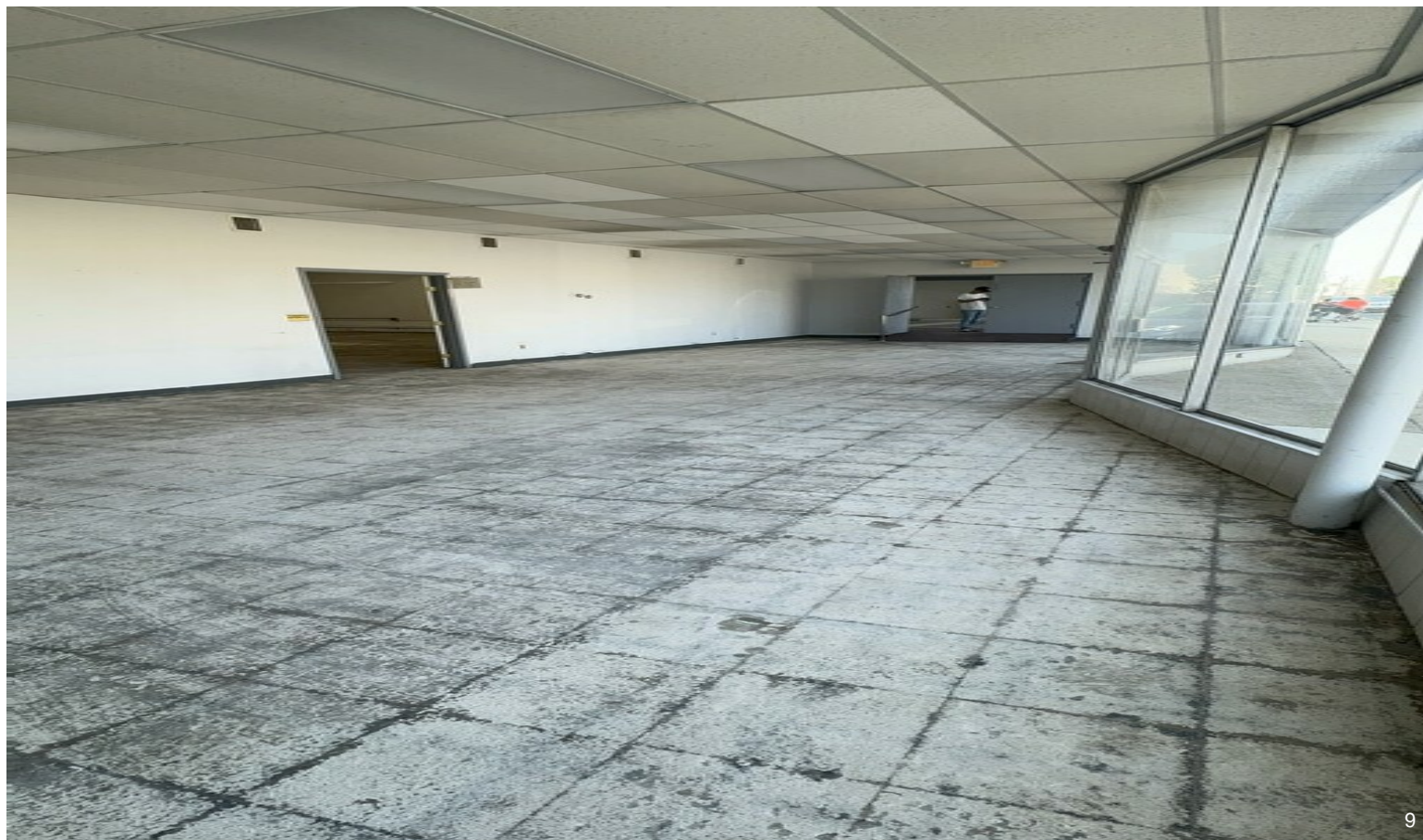
212 flye



Property Photos



2



9

Property Photos



12



10