



Ascension



For Lease

3201, 3237A, 3267 S 16th Street
Milwaukee, WI 53215

Medical Office for Lease

Anchored by Ascension St. Francis Hospital

Available Space	1,068 - 6,499 RSF
Building Size	574,000 RSF (Entire Campus)
Parking	Ample Surface & Structure Parking
Lease Rate	Contact Broker

- Existing operators include Emergency, Imaging, Internal Medicine, OB-GYN, Endocrinology, Cardiology, Pharmacy and among others
- Located S 16th Ave & W Ohio Ave with accessibility to I-43 via W Morgan Ave/Holt Ave
- Lower level storage available

Contact us:

Joe Moritz
Vice President
+1 414 278 6871
joe.moritz@colliers.com

Caroline Dragani
Advisor
+1 262 613 6542
caroline.dragani@colliers.com

Dan Wroblewski
Partner
+1 414 278 6813
dan.wroblewski@colliers.com

Colliers | Wisconsin
833 E Michigan Street, Suite 500
Milwaukee, WI 53202
P: +1 414 276 9500
F: +1 414 276 9501
colliers.com

3237A S 16th St

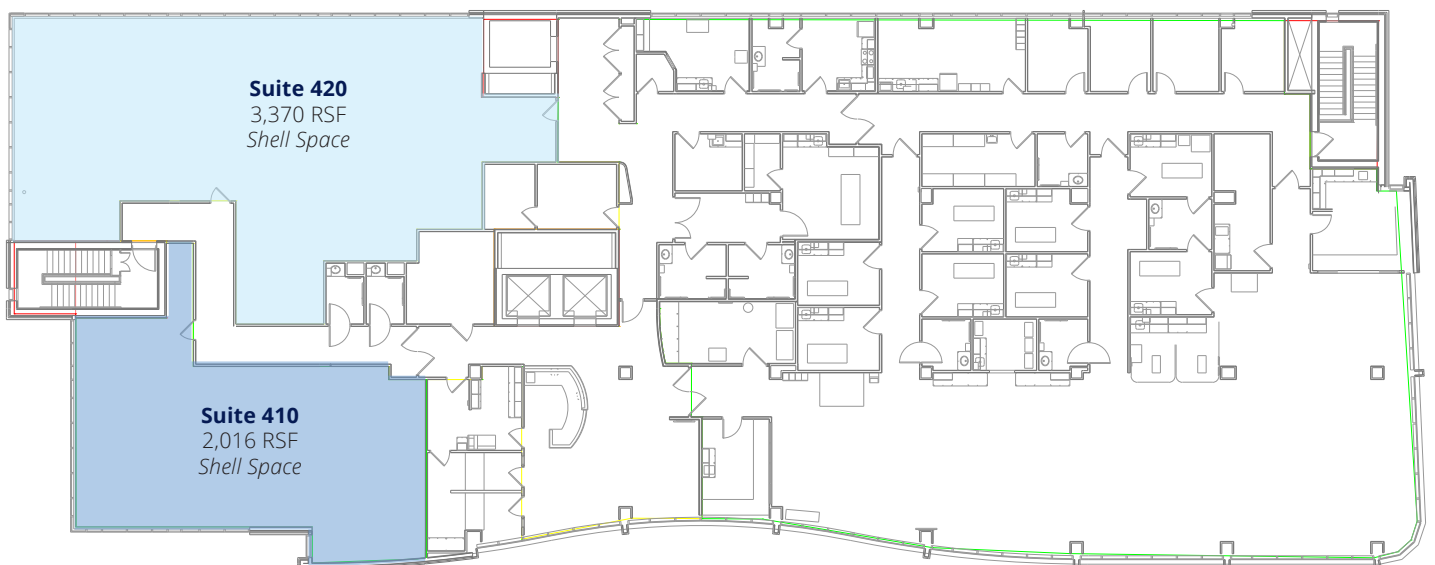
3237A S 16th Street, Milwaukee, WI 53215



Building Highlights

Available Space	2,016 - 3,370 RSF
Building Size	76,101 RSF
Stories	4
Parking	Ample Surface & Structure Parking
Lease Rate	Contact Broker

Floor 4 Availability

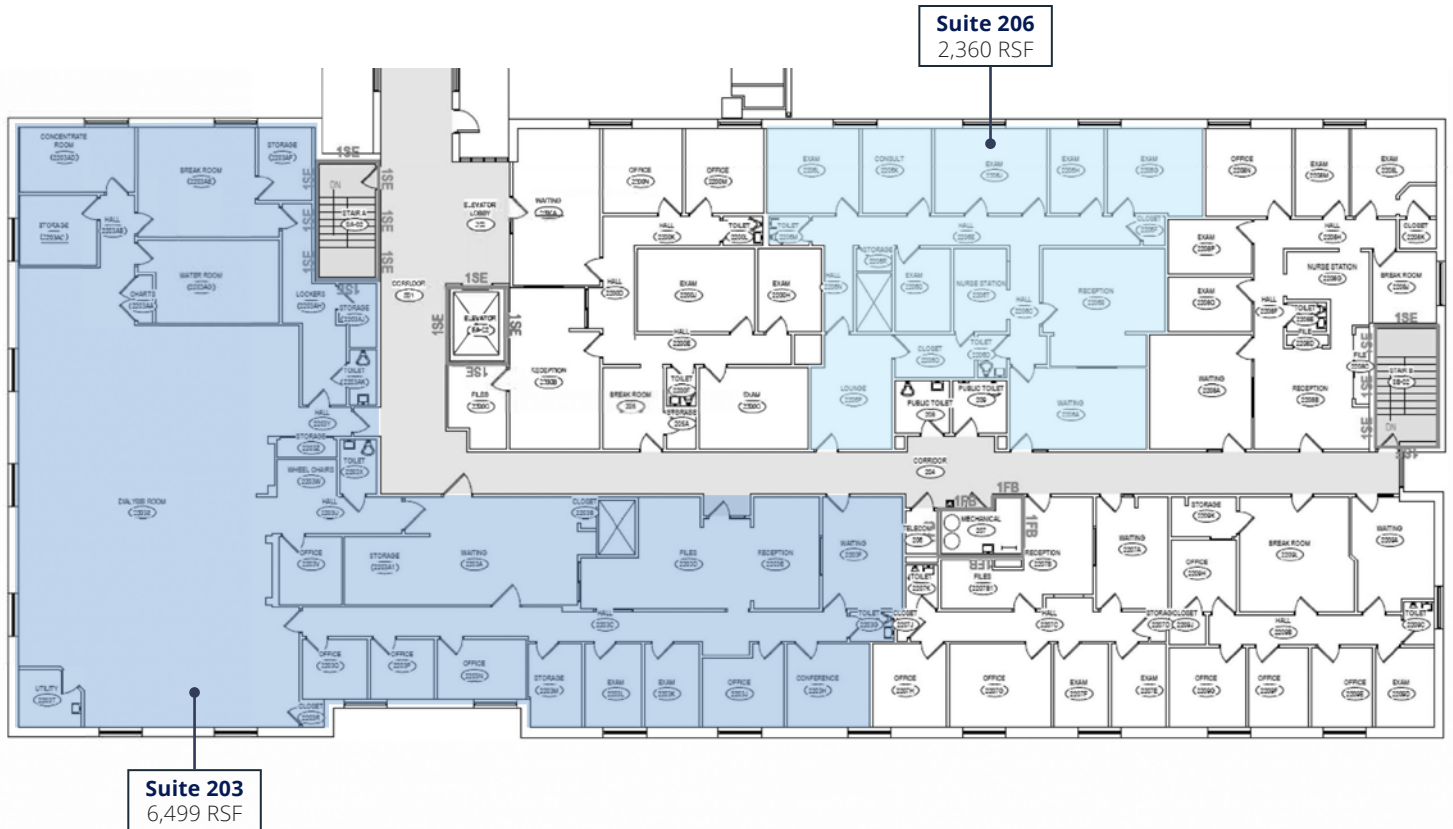


Ohio Building

3267 S 16th Street, Milwaukee, WI 53215



Floor 2 Availability



Euclid Building

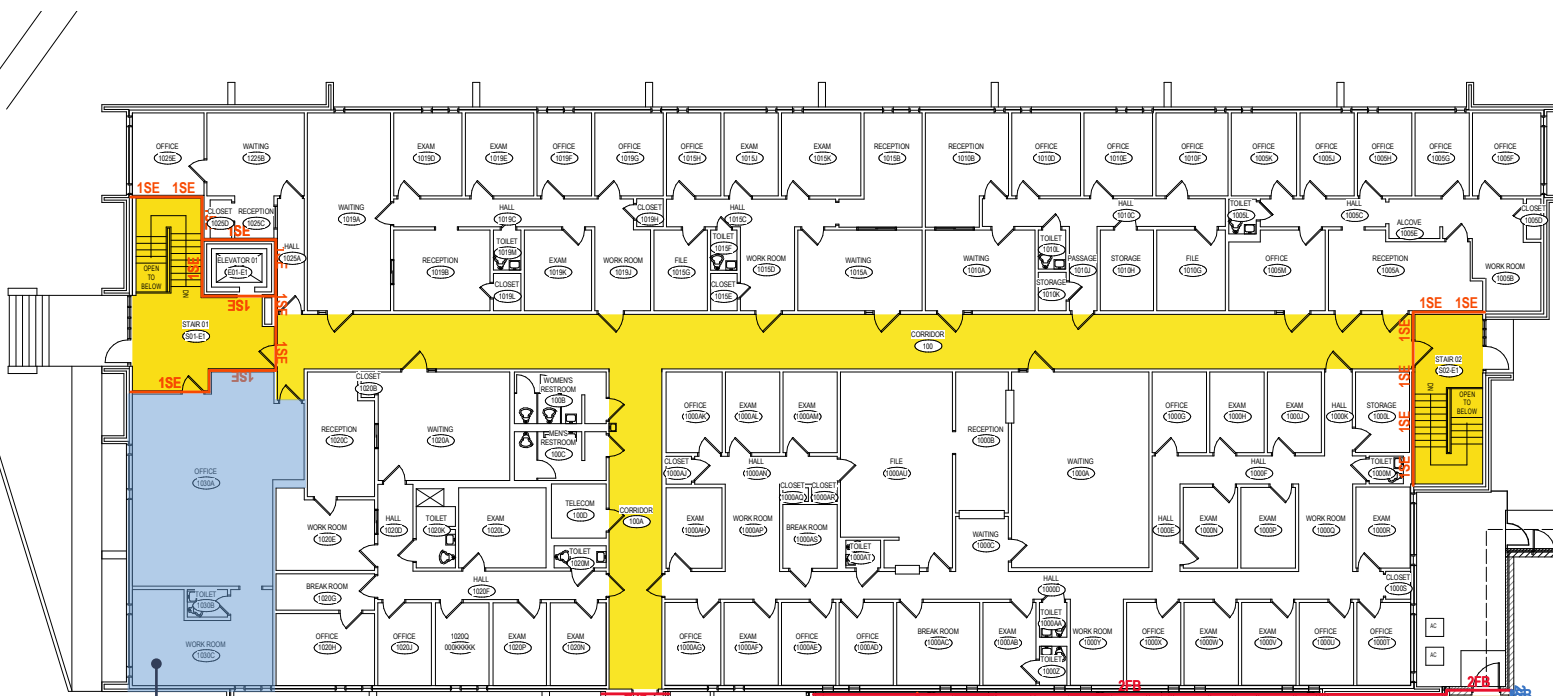
3201 S 16th Street, Milwaukee, WI 53215



Building Highlights

Available Space	965 - 4,412 RSF
Building Size	43,425 RSF
Stories	2 + Lower Level
Parking	Ample Surface & Structure Parking
Lease Rate	Contact Broker

Floor 1 Availability



Suite 1030
965 RSF

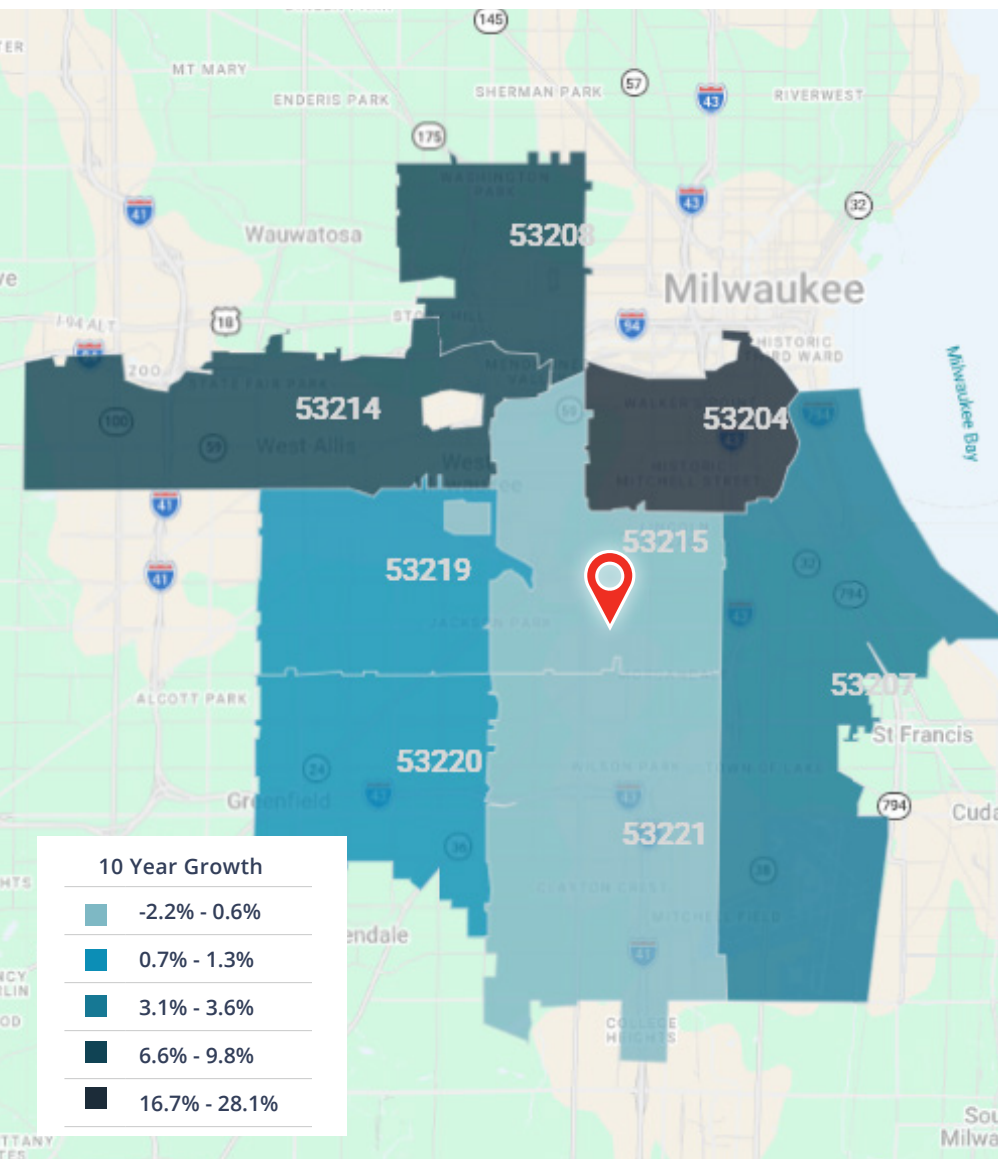
Scenario Planner

Outpatient Market Growth

The Outpatient Market Scenario Planner (MSP), as developed by the Advisory Board, provides current and projected patient utilization estimates for specific specialties in key markets across the US. The MSP tool supports planners, providers and hospital executives to make intelligent business development and strategic decisions to locate or expand programs in targeted markets. The below data is representative of the surrounding zip codes of the **Ascension St. Francis Hospital** – which includes 53204, 53207, 53208, 53214, 53215, 53219, 53220, 53221, and 53295.



For more information about the Advisory Board, please visit www.advisory.com.



Service Line	5-Year Growth	10-Year Growth
Cardiology	1.2%	3.0%
Cosmetic Procedures	3.7%	2.5%
Dermatology	-1.5%	-3.0%
Endocrinology	21.7%	30.9%
ENT	4.5%	7.8%
Evaluation and Management	0.6%	-2.0%
Gastroenterology	-4.2%	-8.0%
General Surgery	-2.5%	-3.9%
Gynecology	-5.6%	-9.5%
Lab	1.7%	2.8%
Miscellaneous Services	2.5%	4.1%
Nephrology	-0.9%	-1.7%
Neurology	0.3%	0.1%
Neurosurgery	0.8%	6.5%
Obstetrics	-5.6%	-10.7%
Oncology	-0.2%	0.7%
Ophthalmology	-0.8%	-2.2%
Orthopedics	1.3%	5.2%
Pain Management	1.7%	2.6%
Physical Therapy/ Rehabilitation	12.3%	23.3%
Podiatry	-7.0%	-11.1%
Psychiatry	15.9%	21.2%
Pulmonology	-9.8%	-20.2%
Radiology	-1.9%	-3.1%
Spine	6.4%	7.9%
Thoracic Surgery	-3.3%	-6.2%
Trauma	-3.3%	-6.0%
Urology	-7.4%	-11.5%
Vascular	0.8%	1.6%

For Lease Ascension St. Francis Campus | Milwaukee, WI 53215



Contact Us

Joe Moritz

Vice President
+1 414 278 6871
joe.moritz@colliers.com

Caroline Dragani

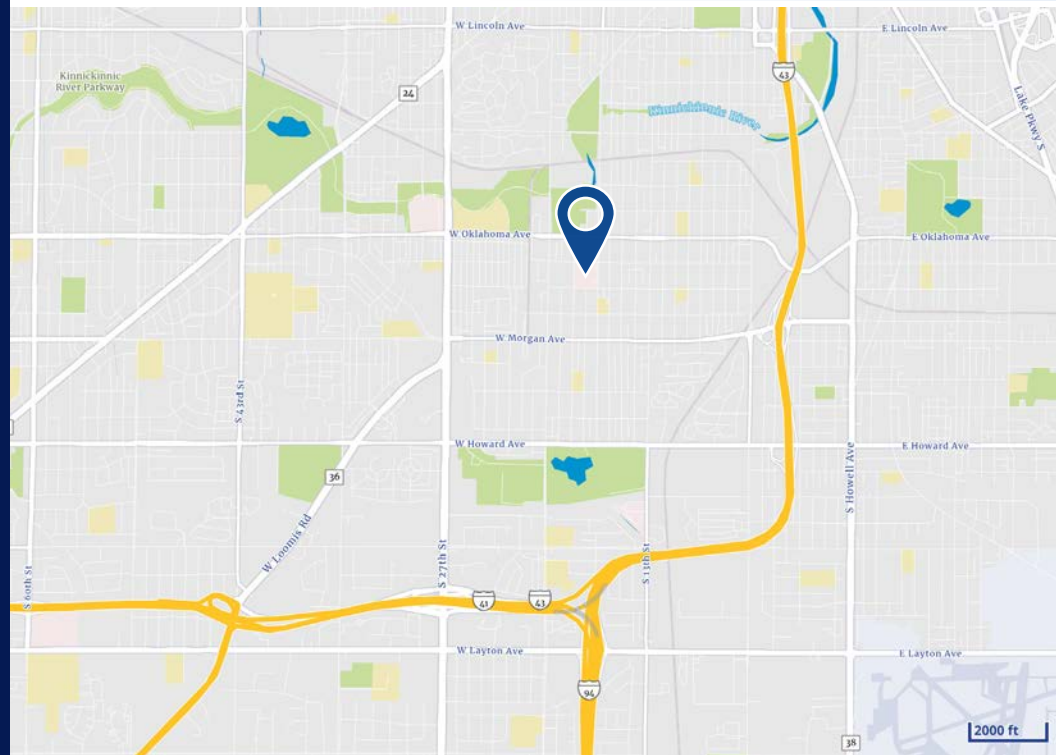
Advisor
+1 262 613 6542
caroline.dragani@colliers.com

Dan Wroblewski

Partner
+1 414 278 6813
dan.wroblewski@colliers.com

Colliers | Wisconsin

833 E Michigan Street, Suite 500
Milwaukee, WI 53202
P: +1 414 276 9500
F: +1 414 276 9501



This document/email has been prepared by Colliers International for advertising and general information only. Colliers International makes no guarantees, representations or warranties of any kind, expressed or implied, regarding the information including, but not limited to, warranties of content, accuracy and reliability. Any interested party should undertake their own inquiries as to the accuracy of the information. Colliers International excludes unequivocally all inferred or implied terms, conditions and warranties arising out of this document and excludes all liability for loss and damages arising there from. This publication is the copyrighted property of Colliers International and /or its licensor(s). © 2026. All rights reserved. This communication is not intended to cause or induce breach of an existing listing agreement.

