

DISCLAIMER: THESE DRAWINGS WERE CREATED FOR EAP AND/ OR FIRE SAFETY FILING ONLY. DO NOT SCALE DRAWING. EXISTING CONDITIONS AND DIMENSIONS MAY VARY AND ARE TO BE FIELD VERIFIED.



721-723 7TH AVENUE

Comprehensive Fire Safety and Evacuation and Emergency Action Floor Plans

Issue date: 12/3/12

Table of Contents	
Drawing #	Drawing Name
FL-0	Table of Contents
I-1	IBRA Table of Contents
ST-1	Site Plan
A- 7	Cellar
FL- 1	1st Floor
FL- 2	2nd Floor
FL- 3	3rd Floor
FL- 4	4th Floor
FL- 5	5th Floor
FL- 6	6th Floor
FL- 7	7th Floor
FL- 8	8th Floor
FL- 9	9th Floor
FL-10	10th Floor
FL-11	11th Floor
FL-12	12th Floor
FL-12P	PENTHOUSE
FL-12M	MECHANICAL ROOM
FR-1	Roof

Building Notes:
- Full Sprinkler Coverage
-No Emergency Generator

DISCLAIMER:

1. These drawings are in accordance with Fire Dept. Rule Title 3 RCNY 404-01, **"Fire Safety and Evacuation Plan"** and Title 3 RCNY 404-02, **"Emergency Action Plan"** and comply with the New York City Fire Code (FC) Section FC404.2.1 and Section FC404.2.2. All other provisions are equivalent to current code BC 706, and BC 1002 Definitions. These drawings were not reviewed for DOB compliance.

2. These plans are not to scale, not for construction nor design purposes. Locations and configurations of partitions may vary significantly.

3. The designations of "FIRE BARRIERS" are based solely on a walk-through survey of the building. The survey was limited to non-intrusive visual inspection of accessible and easily visible conditions. No intrusive visual inspection, removal of materials or assemblies, or exploratory probing was performed.

4. In-Building Relocation Areas were reviewed by the client/ consultant.

5. These floor plans must be reviewed annually and amended to reflect significant changes in the design and arrangement or use and occupancy of the building that affect the Comprehensive Fire Safety, Emergency Action and Evacuation Plan. Such amendments must be submitted to the FDNY prior to occupancy of any space that has been reconfigured for an existing or new tenant of the building.

LEGEND

As designated on plans.

FP

Fire-Alarm Pull (FP)

FE

Fire Extinguisher (FE)

SP

Standpipe (SP)
(with or w/o a hose)

FH

Fire Hose (FH)
(without standpipe hose outlet)

WS

Warden Station (WS)
(Fire phone or phone jack)

FCS

Fire Command Station (FCS)- (See Ground Floor)

Fire Dept. Connection
(See Ground Fl. & Site Plan)

Sprinkler Valve (SV)

SPV

Standpipe Valve (SPV)

CV

Combo Valve (CV)
(standpipe/sprinkler riser valve)

EXIT

Evacuation Route

Furniture/ Equip.
(furniture/ equipment/ removable partitions)

Permanent Partition
(non-removable permanent partitions)

Fire Barrier
(permanent part. walls of demising, corridors, & mech. equip. rooms)

In-Building Relocation Areas (IBRAs)

Sprinkled Areas (blue)
& Non-sprinkled Areas

*Shown on partially covered floors.
(See bottom right corner of plan for details)

NOTE: Not all devices and designations in legend may apply to this building

NO.	DATE:	ISSUED/ COMMENTS:
1	12.3.12	ISSUED FOR REVIEW
2	12.26.12	REVISED PER ARCHITECT ISSUED FOR REVIEW AND FILING

Drawn By:
ES

Checked By:
JG

BUILDING ADDRESS:

721-723 7th avenue
New York, N.Y. 10019

DRAWING TITLE:

FL-0
Table of Contents

SURVEY DATE:

11/6/12

721-723 7TH AVENUE

IN-BUILDING RELOCATION AREA TABLE OF CONTENTS

IBRA Table of Contents		
Drawing	Floor Name	In-Building Relocation Area
A-7	Cellar	---
FL-1	1st Floor	CORRIDORS AND ELEVATOR LOBBIES
FL-2	2nd Floor	CORRIDORS AND ELEVATOR LOBBIES
FL-3	3rd Floor	CORRIDORS AND ELEVATOR LOBBIES
FL-4	4th Floor	CORRIDORS AND ELEVATOR LOBBIES
FL-5	5th Floor	CORRIDORS AND ELEVATOR LOBBIES
FL-6	6th Floor	CORRIDORS AND ELEVATOR LOBBIES
FL-7	7th Floor	CORRIDORS AND ELEVATOR LOBBIES
FL-8	8th Floor	CORRIDORS AND ELEVATOR LOBBIES
FL-9	9th Floor	CORRIDORS AND ELEVATOR LOBBIES
FL-10	10th Floor	CORRIDORS AND ELEVATOR LOBBIES
FL-11	11th Floor	CORRIDORS AND ELEVATOR LOBBIES
FL-12	12th Floor	CORRIDORS AND ELEVATOR LOBBIES
FL-12P	PENTHOUSE	---
FL-12M	MECHANICAL RM.	---
FR-1	Roof 1	---

*See Floor Plans for IBRA locations

LEGEND

As designated on plans.

FP Fire-Alarm Pull (FP)


FE Fire Extinguisher (FE)

Ⓢ Standpipe (SP)
(with or w/o a hose)

FH Fire Hose (FH)
(without standpipe hose outlet)

 **Warden Station (WS)**
(Fire phone or phone jack)

FCS Fire Command Station (FCS)- (See Ground Floor)

 Fire Dept. Connection
(See Ground Fl. & Site Plan)

 Sprinkler Valve (SV)

 Standpipe Valve (SPV)

 **Combo Valve (CV)**
(standpipe/sprinkler riser valve)

EXIT — Evacuation Route


Furniture/ Equip.
(furniture/ equipment/ removable partitions)

Permanent Partition

(non-removable permanent partitions)

Fire Barrier
(permanent part. walls of demising,
corridors, & mech. equip. rooms)

 In-Building Relocation Areas (IBRAs)

 Sprinkled Areas (blue)

& Non-sprinkled Areas
*Shown on partially covered floors.
(See bottom right corner of plan for details)

NOTE: Not all devices and designations in legend may apply to this building

[illegible]

Drawn By:
ES

Checked By:
JG

BUILDING ADDRESS:

721-723 7th avenue

New York, N.Y. 10019

DRAWING TITLE:

1-1

IBRA Contents

SURVEY DATE:

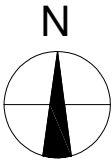
11/6/12

DISCLAIMER: THESE DRAWINGS WERE CREATED FOR EAP AND/ OR FIRE SAFETY FILING ONLY. DO NOT SCALE DRAWING. EXISTING CONDITIONS AND DIMENSIONS MAY VARY AND ARE TO BE FIELD VERIFIED.



721-723 7TH AVENUE
New York, NY 10019

Block: 1001
Lot: 1



* Primary Assembly:



* Secondary Assembly:



LEGEND

As designated on plans.

- Fire-Alarm Pull (FP)
- Fire Extinguisher (FE)
- Standpipe (SP)
(with or w/o a hose)
- Fire Hose (FH)
(without standpipe hose outlet)
- Warden Station (WS)
(Fire phone or phone jack)
- Fire Command Station (FCS)- (See Ground Floor)
- Fire Dept. Connection
(See Ground Fl. & Site Plan)
- Sprinkler Valve (SV)
- Standpipe Valve (SPV)
- Combo Valve (CV)
(standpipe/sprinkler riser valve)

Evacuation Route

Furniture/ Equip.
(furniture/ equipment/ removable partitions)

Permanent Partition
(non-removable permanent partitions)

Fire Barrier
(permanent part. walls of demising, corridors, & mech. equip. rooms)

In-Building Relocation Areas (IBRAs)

Sprinkled Areas (blue) & Non-sprinkled Areas
*Shown on partially covered floors.
(See bottom right corner of plan for details)

NOTE: Not all devices and designations in legend may apply to this building

NO.	DATE:	ISSUED/ COMMENTS:
1	12.3.12	ISSUED FOR REVIEW
2	12.26.12	REVISED PER ARCHITECT ISSUED FOR REVIEW AND FILING

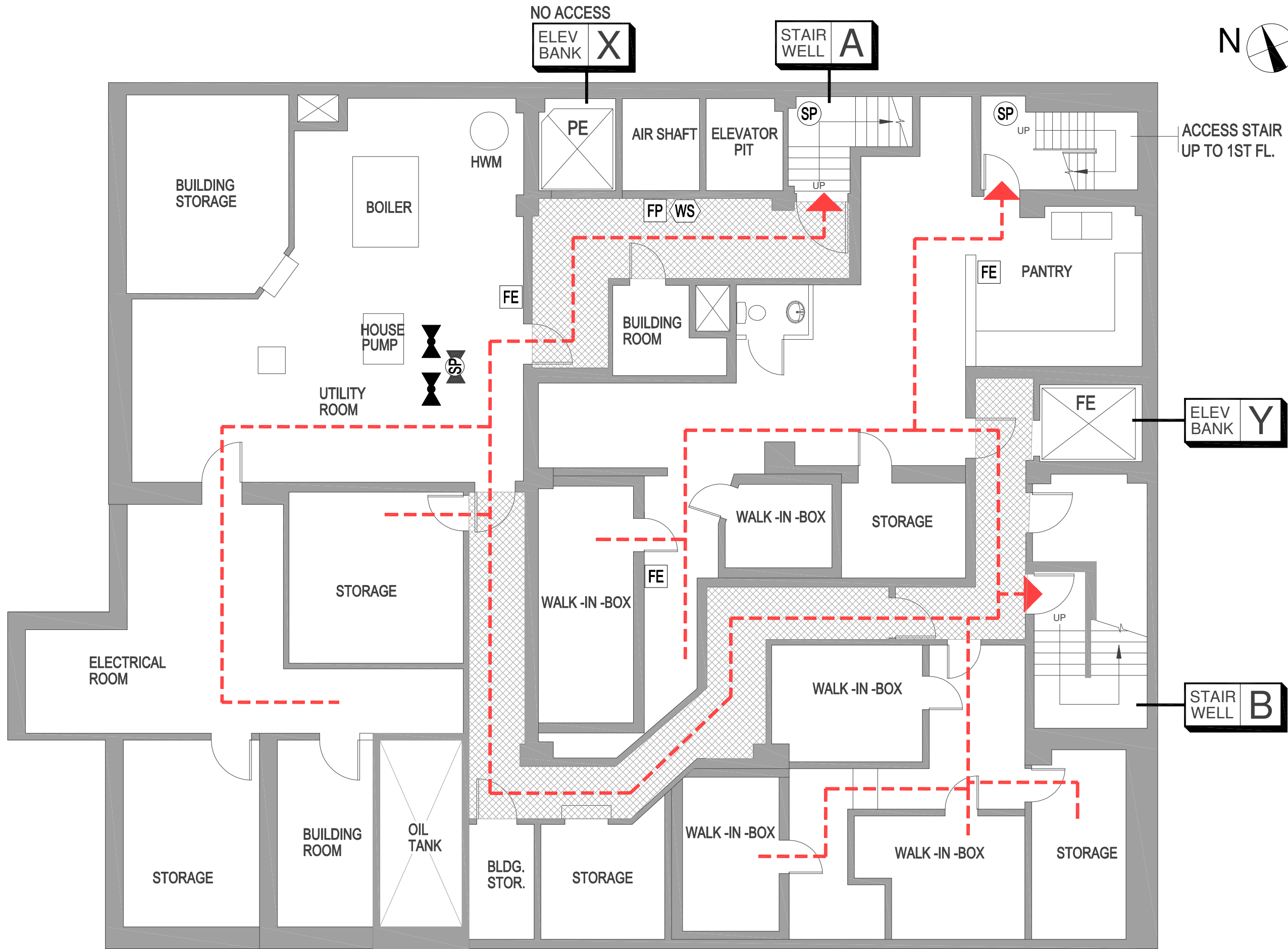
Drawn By: ES	Checked By: JG
-----------------	-------------------

BUILDING ADDRESS:
721-723 7th avenue
New York, N.Y. 10019

DRAWING TITLE:
ST-1
Site Plan

SURVEY DATE:
11/6/12

SEVENTH AVENUE



LEGEND

As designated on plans.

- FP** Fire-Alarm Pull (FP)
- FE** Fire Extinguisher (FE)
- SP** Standpipe (SP) (with or w/o a hose)
- FH** Fire Hose (FH) (without standpipe hose outlet)
- WS** Warden Station (WS) (Fire phone or phone jack)
- FCS** Fire Command Station (FCS) (See Ground Floor)
- Fire Dept. Connection** (See Ground Fl. & Site Plan)
- SV** Sprinkler Valve (SV)
- SPV** Standpipe Valve (SPV)
- CV** Combo Valve (CV) (standpipe/sprinkler riser valve)

EXIT — Evacuation Route

Furniture/ Equip. (furniture/ equipment/ removable partitions)

Permanent Partition (non-removable permanent partitions)

Fire Barrier (permanent part. walls of demising, corridors, & mech. equip. rooms)

In-Building Relocation Areas (IBRAs)

Sprinkled Areas (blue) & Non-sprinkled Areas

*Shown on partially covered floors. (See bottom right corner of plan for details)

NOTE: Not all devices and designations in legend may apply to this building

NO.	DATE:	ISSUED/ COMMENTS:
1	12.3.12	ISSUED FOR REVIEW
2	12.26.12	REVISED PER ARCHITECT ISSUED FOR REVIEW AND FILING

Drawn By: ES Checked By: JG

BUILDING ADDRESS:
721-723 7th avenue
New York, N.Y. 10019

DRAWING TITLE:
A-7
CELLAR

SURVEY DATE:
11/6/12

WEST 48TH STREET

NOTE: FULL SPRINKLER COVERAGE ON THIS FLOOR

SEVENTH AVENUE

WEST 48TH STREET



FIRE DEPT.
SPRINKLER
CONNECTION

FIRE DEPT.
STANDPIPE
CONNECTION

EXIT

EXIT

ACCESS STAIR
UP TO 2ND FL.

STORAGE

DINING AREA

BAR

KITCHEN

ELEV
BANK

X

STAIR
WELL

A

SP

UP

DN

SP

UP

DN

ACCESS STAIR
DN. TO CELLAR

ELEV
BANK

Y

STAIR
WELL

B

FIRE DEPT.
SPRINKLER
CONNECTION

FIRE DEPT.
STANDPIPE
CONNECTION

EXIT

EXIT

NOTE: FULL SPRINKLER COVERAGE ON THIS FLOOR

LEGEND

As designated on plans.

- FP** Fire-Alarm Pull (FP)
- FE** Fire Extinguisher (FE)
- SP** Standpipe (SP)
(with or w/o a hose)
- FH** Fire Hose (FH)
(without standpipe hose outlet)
- WS** Warden Station (WS)
(Fire phone or phone jack)
- FCS** Fire Command Station (FCS)- (See Ground Floor)
- Fire Dept. Connection
(See Ground Fl. & Site Plan)
- Sprinkler Valve (SV)
- Standpipe Valve (SPV)
- Combo Valve (CV)
(standpipe/sprinkler riser valve)

EXIT — Evacuation Route

Furniture/ Equip.
(furniture/ equipment/ removable partitions)

Permanent Partition
(non-removable permanent partitions)

Fire Barrier
(permanent part. walls of demising,
corridors, & mech. equip. rooms)

**In-Building Relocation
Areas (IBRAs)**

Sprinkled Areas (blue)
& Non-sprinkled Areas

*Shown on partially covered floors.
(See bottom right corner of plan for details)

NOTE: Not all devices and designations in legend
may apply to this building

NO.	DATE:	ISSUED/ COMMENTS:
1	12.3.12	ISSUED FOR REVIEW
2	12.26.12	REVISED PER ARCHITECT ISSUED FOR REVIEW AND FILING

Drawn By: ES
Checked By: JG

BUILDING ADDRESS:

721-723 7th avenue

New York, N.Y. 10019

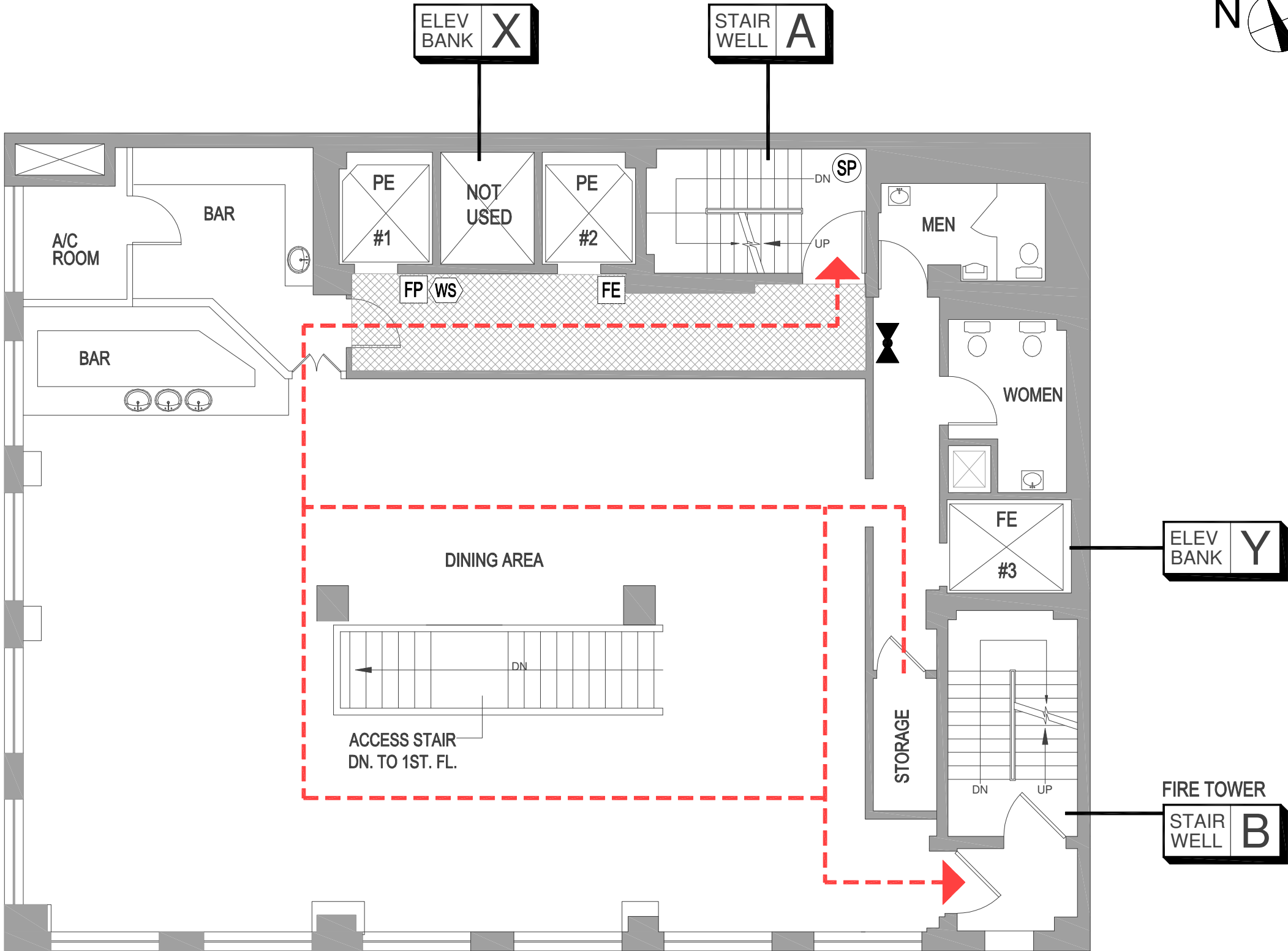
DRAWING TITLE:

FL-1
1st Floor

SURVEY DATE:

11/6/12

SEVENTH AVENUE



WEST 48TH STREET

NOTE: FULL SPRINKLER COVERAGE ON THIS FLOOR

LEGEND

As designated on plans.

- FP** Fire-Alarm Pull (FP)
- FE** Fire Extinguisher (FE)
- SP** Standpipe (SP)
(with or w/o a hose)
- FH** Fire Hose (FH)
(without standpipe hose outlet)
- WS** Warden Station (WS)
(Fire phone or phone jack)
- FCS** Fire Command Station (FCS)- (See Ground Floor)
- Fire Dept. Connection
(See Ground Fl. & Site Plan)
- SV** Sprinkler Valve (SV)
- SPV** Standpipe Valve (SPV)
- CV** Combo Valve (CV)
(standpipe/sprinkler riser valve)

EXIT — Evacuation Route

Furniture/ Equip.
(furniture/ equipment/ removable partitions)

Permanent Partition
(non-removable permanent partitions)

Fire Barrier
(permanent part. walls of demising, corridors, & mech. equip. rooms)

In-Building Relocation Areas (IBRAs)

Sprinkled Areas (blue) & Non-sprinkled Areas
*Shown on partially covered floors.
(See bottom right corner of plan for details)

NOTE: Not all devices and designations in legend may apply to this building

NO.	DATE:	ISSUED/ COMMENTS:
1	12.3.12	ISSUED FOR REVIEW
2	12.26.12	REVISED PER ARCHITECT ISSUED FOR REVIEW AND FILING

Drawn By: ES Checked By: JG

BUILDING ADDRESS:
721-723 7th avenue
New York, N.Y. 10019

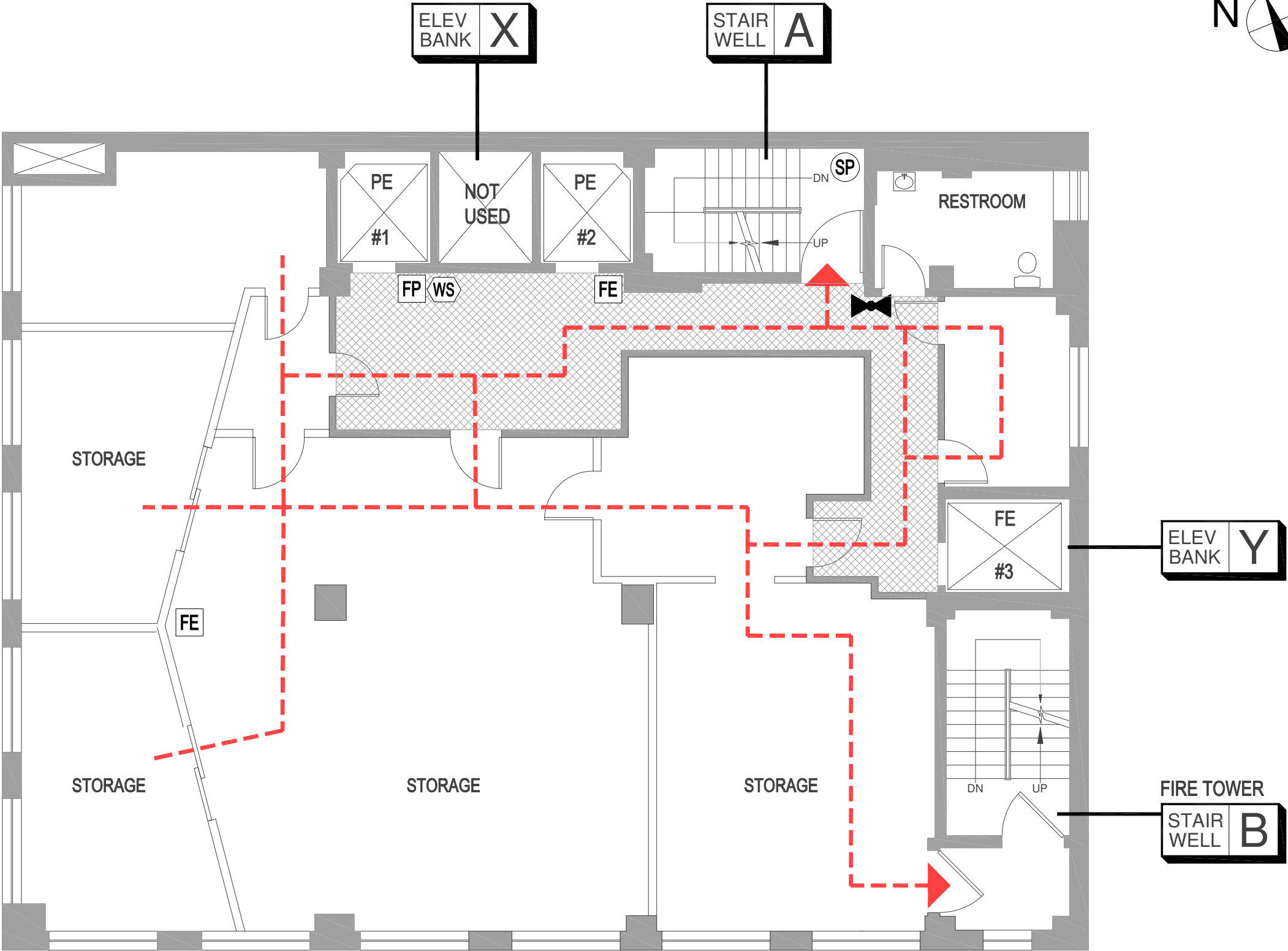
DRAWING TITLE:
FL-2
2nd Floor

SURVEY DATE:
11/6/12

DISCLAIMER: THESE DRAWINGS WERE CREATED FOR EAP AND/ OR FIRE SAFETY FILING ONLY. DO NOT SCALE DRAWING. EXISTING CONDITIONS AND DIMENSIONS MAY VARY AND ARE TO BE FIELD VERIFIED.



SEVENTH AVENUE



LEGEND

- As designated on plans.
- FP** Fire-Alarm Pull (FP)
 - FE** Fire Extinguisher (FE)
 - SP** Standpipe (SP)
(with or w/o a hose)
 - FH** Fire Hose (FH)
(without standpipe hose outlet)
 - WS** Warden Station (WS)
(Fire phone or phone jack)
 - FCS** Fire Command Station (FCS)- (See Ground Floor)
 - Fire Dept. Connection
(See Ground Fl. & Site Plan)
 - SV** Sprinkler Valve (SV)
 - SPV** Standpipe Valve (SPV)
 - CV** Combo Valve (CV)
(standpipe/sprinkler riser valve)
 - EXIT** Evacuation Route
 - Furniture/ Equip.**
(furniture/ equipment/ removable partitions)
 - Permanent Partition**
(non-removable permanent partitions)
 - Fire Barrier**
(permanent part. walls of demising, corridors, & mech. equip. rooms)
 - In-Building Relocation Areas (IBRAs)**
 - Sprinkled Areas (blue) & Non-sprinkled Areas**
*Shown on partially covered floors.
(See bottom right corner of plan for details)

NOTE: Not all devices and designations in legend may apply to this building

NO.	DATE:	ISSUED/ COMMENTS:
1	12.3.12	ISSUED FOR REVIEW
2	12.26.12	REVISED PER ARCHITECT ISSUED FOR REVIEW AND FILING

Drawn By: ES	Checked By: JG
-----------------	-------------------

BUILDING ADDRESS:
721-723 7th avenue
New York, N.Y. 10019

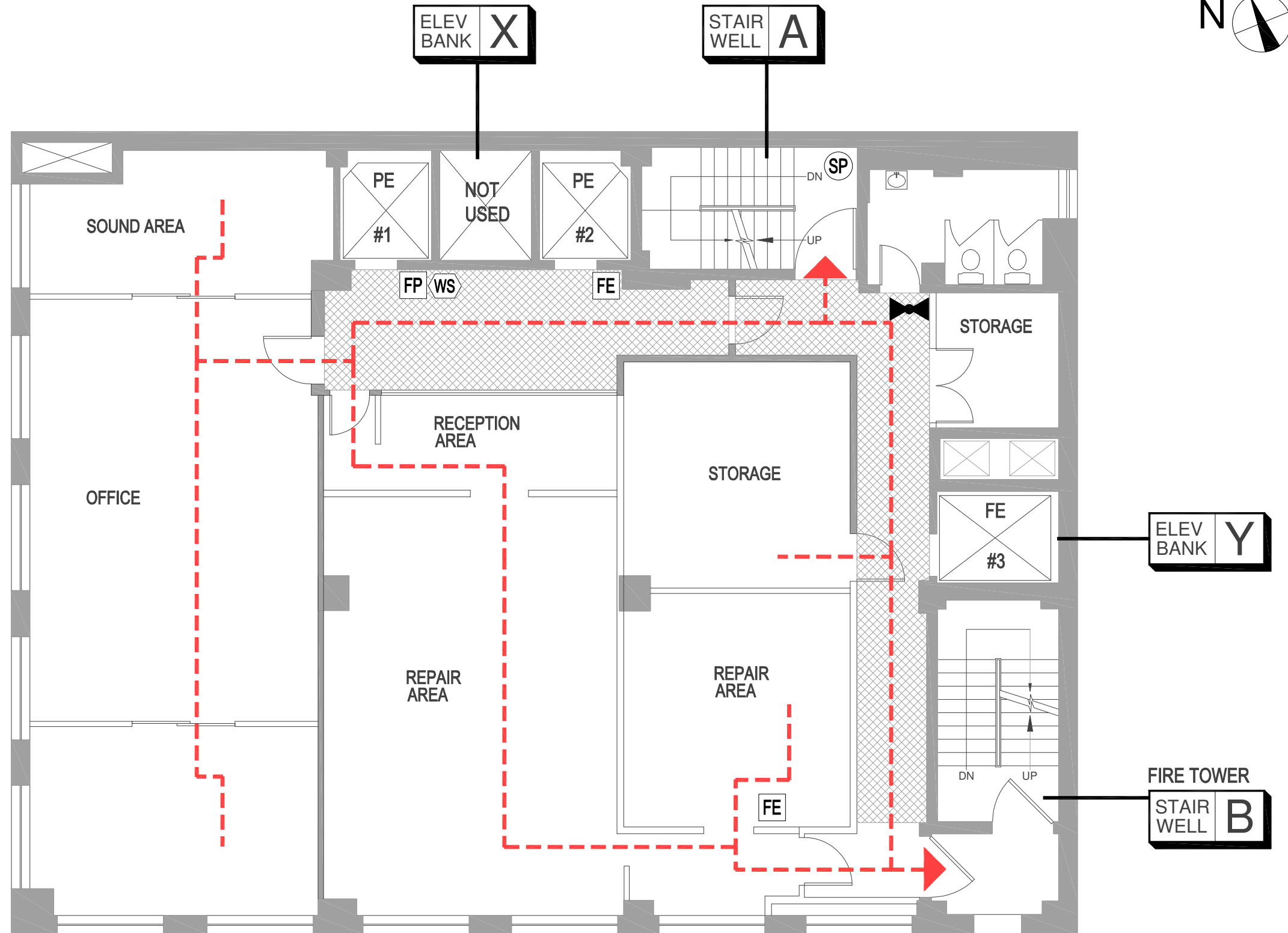
DRAWING TITLE:
FL-3
3rd Floor

SURVEY DATE:
11/6/12

WEST 48TH STREET











NOTE: FULL SPRINKLER COVERAGE ON THIS FLOOR

SEVENTH AVENUE



LEGEND

As designated on plans.


-  Fire-Alarm Pull (FP)
-  Fire Extinguisher (FE)
-  Standpipe (SP)
(with or w/o a hose)
-  Fire Hose (FH)
(without standpipe hose outlet)
-  Warden Station (WS)
(Fire phone or phone jack)
-  **Fire Command Station (FCS)**- (See Ground Floor)
-  Fire Dept. Connection
(See Ground Fl. & Site Plan)
-  Sprinkler Valve (SV)
-  Standpipe Valve (SPV)
-  Combo Valve (CV)
(standpipe/sprinkler riser valve)

EXIT — Evacuation Route

Furniture/ Equip.
(furniture/ equipment/ removable partitions)

===== **Permanent Partition**
(non-removable permanent partitions)

Fire Barrier
(permanent part. walls of demising,
corridors, & mech. equip. rooms)

 In-Building Relocation Areas (IBRAs)

Sprinkled Areas (blue)
& Non-sprinkled Areas
*Shown on partially covered floors.
(See bottom right corner of plan for details)

NOTE: Not all devices and designations in legend may apply to this building

[illegible]

Drawn By: ES	Checked By: JG
-----------------	-------------------

BUILDING ADDRESS:

721-723 7th avenue
New York, N.Y. 10019

DRAWING TITLE:

FL-4
4th Floor

SURVEY DATE:
11/6/12

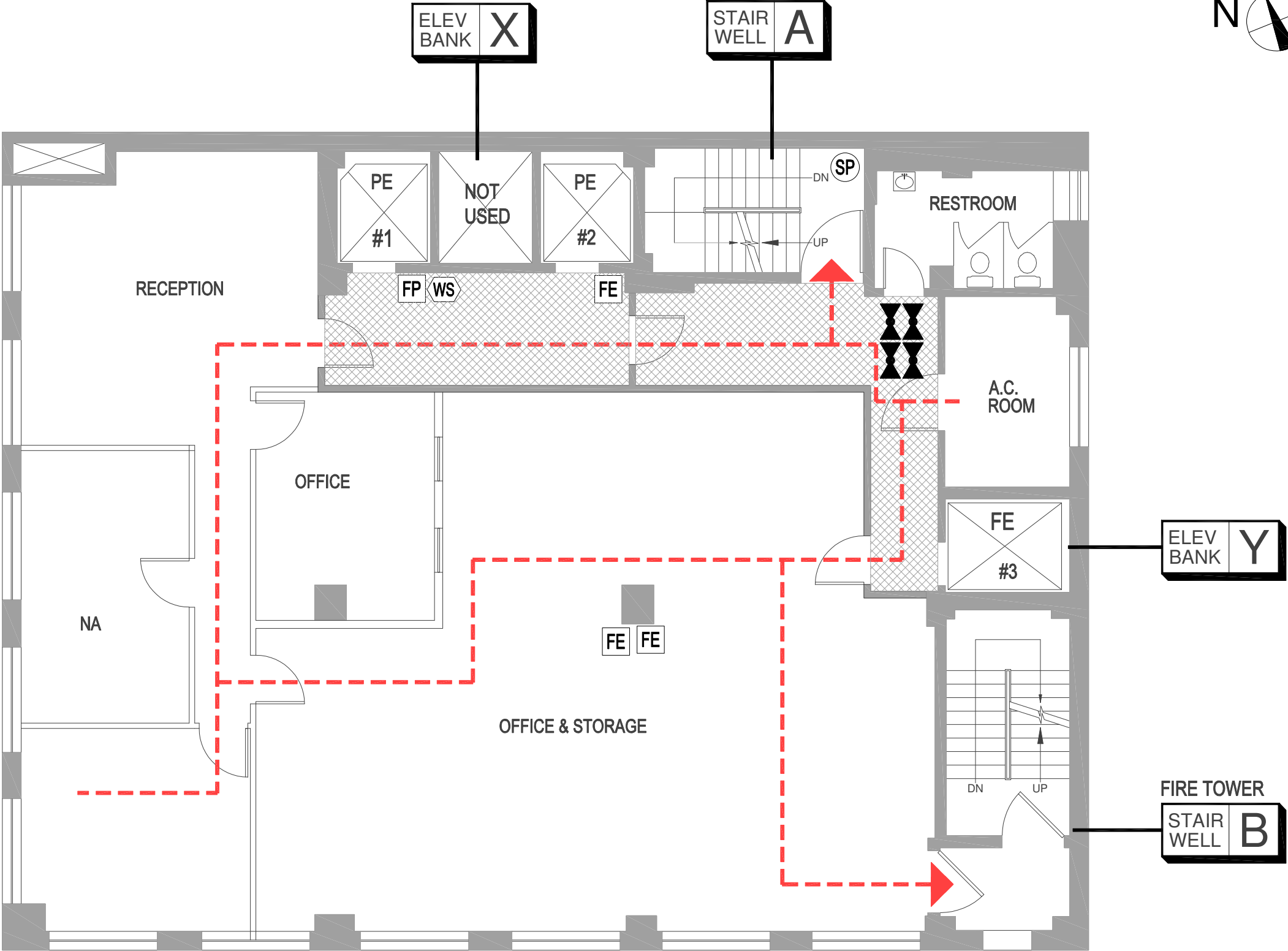
WEST 48TH STREET

NOTE: FULL SPRINKLER COVERAGE ON THIS FLOOR

DISCLAIMER: THESE DRAWINGS WERE CREATED FOR EAP AND/ OR FIRE SAFETY FILING ONLY. DO NOT SCALE DRAWING. EXISTING CONDITIONS AND DIMENSIONS MAY VARY AND ARE TO BE FIELD VERIFIED.



SEVENTH AVENUE



LEGEND

As designated on plans.

- FP** Fire-Alarm Pull (FP)
- FE** Fire Extinguisher (FE)
- SP** Standpipe (SP)
(with or w/o a hose)
- FH** Fire Hose (FH)
(without standpipe hose outlet)
- WS** Warden Station (WS)
(Fire phone or phone jack)
- FCS** Fire Command Station (FCS)- (See Ground Floor)
- Fire Dept. Connection
(See Ground Fl. & Site Plan)
- SV** Sprinkler Valve (SV)
- SPV** Standpipe Valve (SPV)
- CV** Combo Valve (CV)
(standpipe/sprinkler riser valve)

EXIT — Evacuation Route

Furniture/ Equip.
(furniture/ equipment/ removable partitions)

Permanent Partition
(non-removable permanent partitions)

Fire Barrier
(permanent part. walls of demising, corridors, & mech. equip. rooms)

In-Building Relocation Areas (IBRAs)

Sprinkled Areas (blue)
& Non-sprinkled Areas

*Shown on partially covered floors.
(See bottom right corner of plan for details)

NOTE: Not all devices and designations in legend may apply to this building

NO.	DATE:	ISSUED/ COMMENTS:
1	12.3.12	ISSUED FOR REVIEW
2	12.26.12	REVISED PER ARCHITECT ISSUED FOR REVIEW AND FILING

Drawn By: ES Checked By: JG

BUILDING ADDRESS:
721-723 7th avenue
New York, N.Y. 10019

DRAWING TITLE:
FL-5
5th Floor

SURVEY DATE:
11/6/12

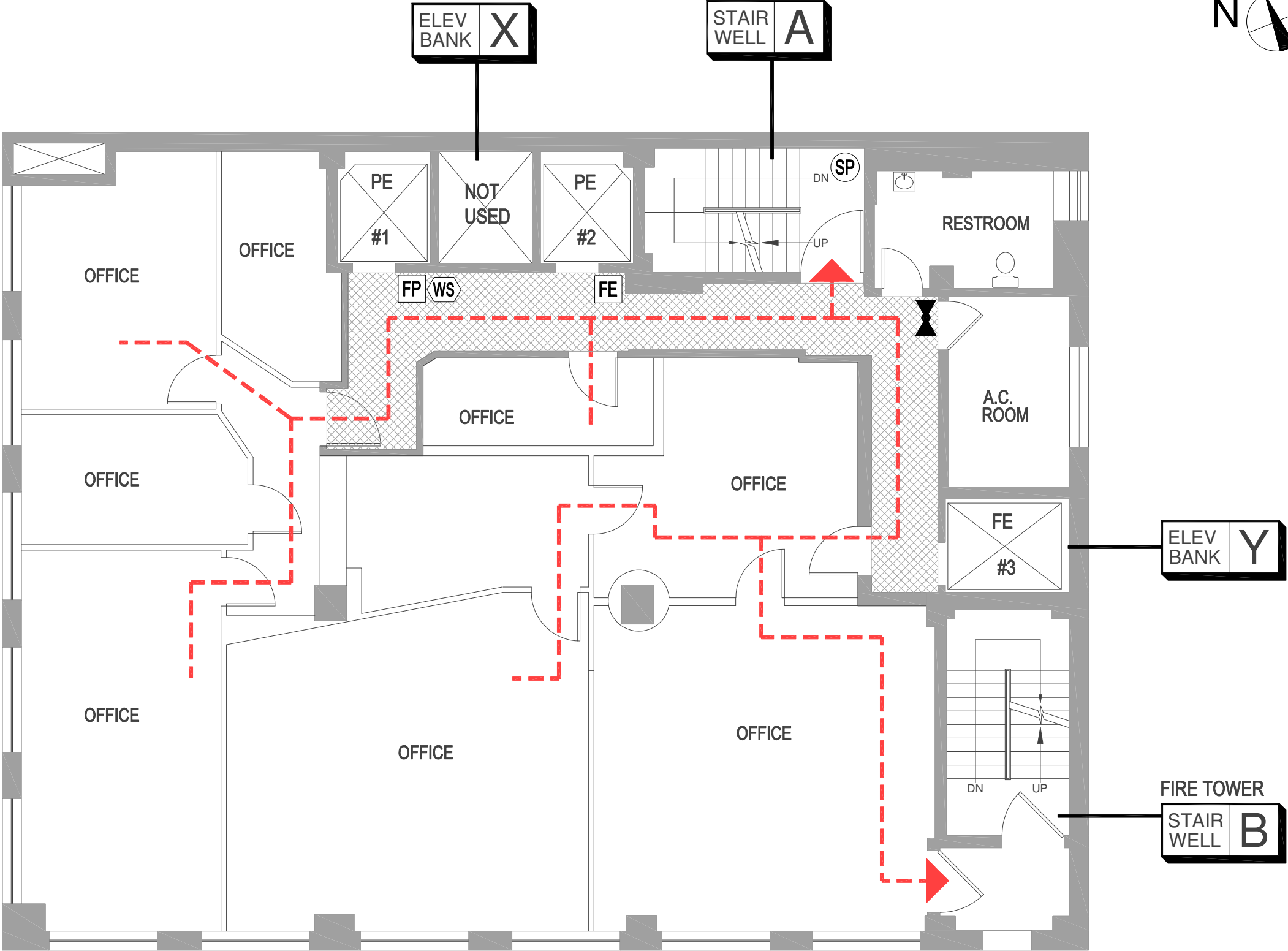
WEST 48TH STREET

NOTE: FULL SPRINKLER COVERAGE ON THIS FLOOR

DISCLAIMER: THESE DRAWINGS WERE CREATED FOR EAP AND/ OR FIRE SAFETY FILING ONLY. DO NOT SCALE DRAWING. EXISTING CONDITIONS AND DIMENSIONS MAY VARY AND ARE TO BE FIELD VERIFIED.



SEVENTH AVENUE



LEGEND

As designated on plans.

- FP** Fire-Alarm Pull (FP)
- FE** Fire Extinguisher (FE)
- SP** Standpipe (SP)
(with or w/o a hose)
- FH** Fire Hose (FH)
(without standpipe hose outlet)
- WS** Warden Station (WS)
(Fire phone or phone jack)
- FCS** Fire Command Station (FCS)- (See Ground Floor)
- Fire Dept. Connection**
(See Ground Fl. & Site Plan)
- Sprinkler Valve (SV)**
- Standpipe Valve (SPV)**
- Combo Valve (CV)**
(standpipe/sprinkler riser valve)

EXIT — Evacuation Route

Furniture/ Equip.
(furniture/ equipment/ removable partitions)

Permanent Partition
(non-removable permanent partitions)

Fire Barrier
(permanent part. walls of demising, corridors, & mech. equip. rooms)

In-Building Relocation Areas (IBRAs)

Sprinkled Areas (blue)
& Non-sprinkled Areas

*Shown on partially covered floors.
(See bottom right corner of plan for details)

NOTE: Not all devices and designations in legend may apply to this building

NO.	DATE:	ISSUED/ COMMENTS:
1	12.3.12	ISSUED FOR REVIEW
2	12.26.12	REVISED PER ARCHITECT ISSUED FOR REVIEW AND FILING

Drawn By: ES Checked By: JG

BUILDING ADDRESS:
721-723 7th avenue
New York, N.Y. 10019

DRAWING TITLE:
FL- 6
6th Floor

SURVEY DATE:
11/6/12

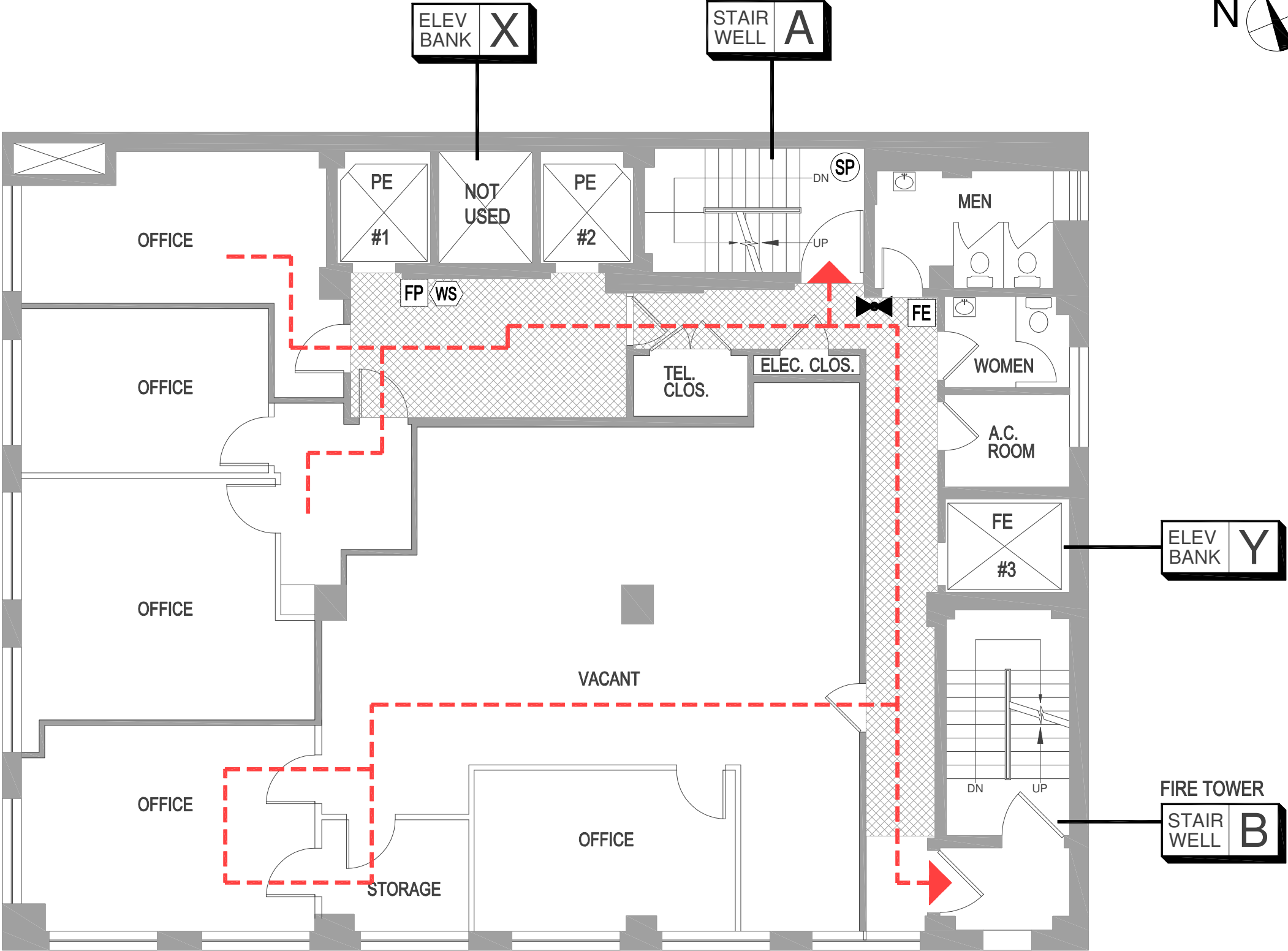
WEST 48TH STREET

NOTE: FULL SPRINKLER COVERAGE ON THIS FLOOR

DISCLAIMER: THESE DRAWINGS WERE CREATED FOR EAP AND/ OR FIRE SAFETY FILING ONLY. DO NOT SCALE DRAWING. EXISTING CONDITIONS AND DIMENSIONS MAY VARY AND ARE TO BE FIELD VERIFIED.



SEVENTH AVENUE



LEGEND

As designated on plans.

- FP** Fire-Alarm Pull (FP)
- FE** Fire Extinguisher (FE)
- SP** Standpipe (SP)
(with or w/o a hose)
- FH** Fire Hose (FH)
(without standpipe hose outlet)
- WS** Warden Station (WS)
(Fire phone or phone jack)
- FCS** Fire Command Station (FCS)- (See Ground Floor)
- Fire Dept. Connection**
(See Ground Fl. & Site Plan)
- SV** Sprinkler Valve (SV)
- SPV** Standpipe Valve (SPV)
- CV** Combo Valve (CV)
(standpipe/sprinkler riser valve)

EXIT — Evacuation Route

Furniture/ Equip.
(furniture/ equipment/ removable partitions)

Permanent Partition
(non-removable permanent partitions)

Fire Barrier
(permanent part. walls of demising, corridors, & mech. equip. rooms)

In-Building Relocation Areas (IBRAs)

Sprinkled Areas (blue)
& Non-sprinkled Areas
*Shown on partially covered floors.
(See bottom right corner of plan for details)

NOTE: Not all devices and designations in legend may apply to this building

NO.	DATE:	ISSUED/ COMMENTS:
1	12.3.12	ISSUED FOR REVIEW
2	12.26.12	REVISED PER ARCHITECT ISSUED FOR REVIEW AND FILING

Drawn By: ES Checked By: JG

BUILDING ADDRESS:
721-723 7th avenue
New York, N.Y. 10019

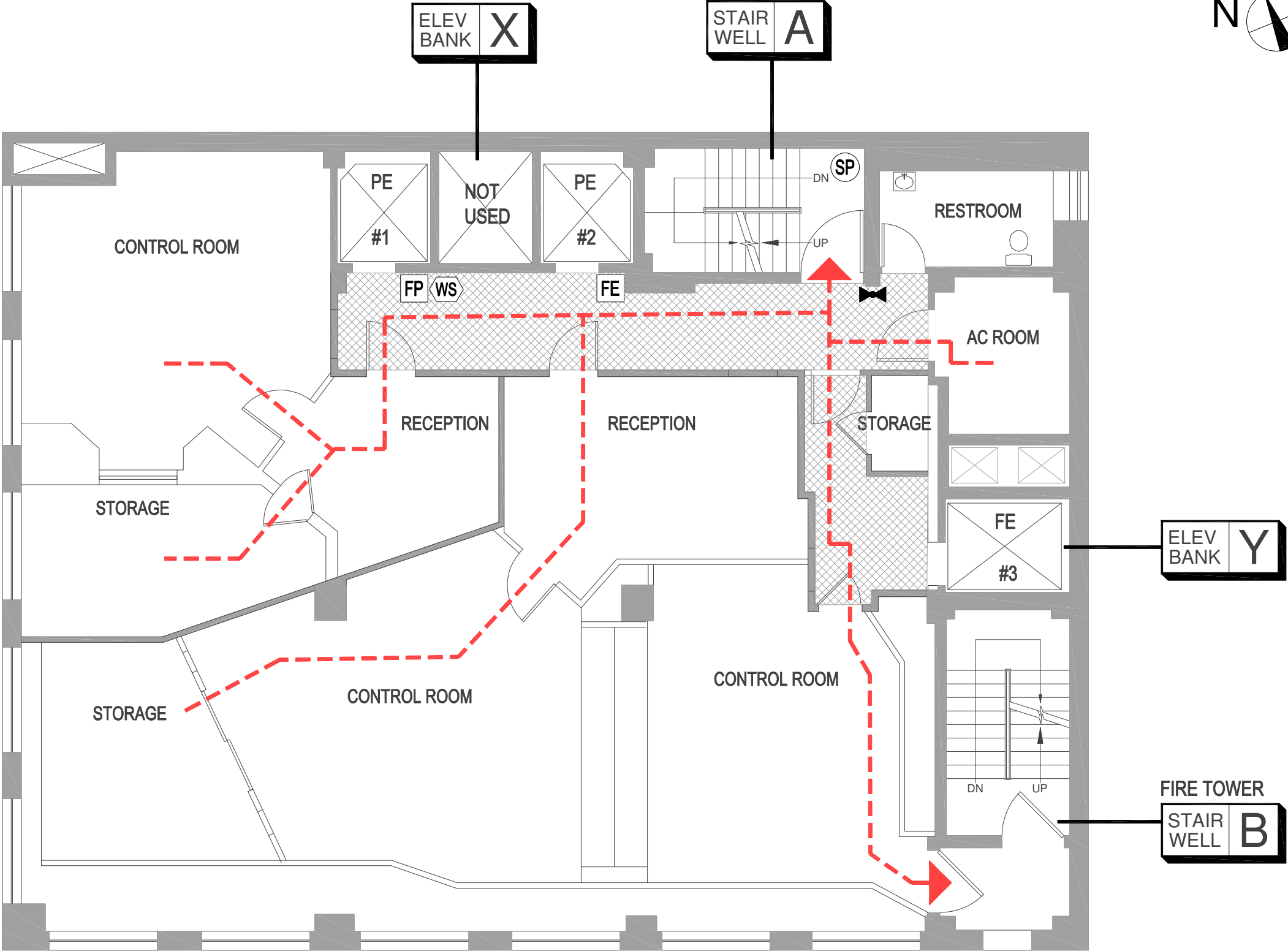
DRAWING TITLE:
FL-7
7th Floor

SURVEY DATE:
11/6/12

WEST 48TH STREET

NOTE: FULL SPRINKLER COVERAGE ON THIS FLOOR

SEVENTH AVENUE



WEST 48TH STREET

NOTE: FULL SPRINKLER COVERAGE ON THIS FLOOR

LEGEND

As designated on plans.

- FP** Fire-Alarm Pull (FP)
- FE** Fire Extinguisher (FE)
- SP** Standpipe (SP)
(with or w/o a hose)
- FH** Fire Hose (FH)
(without standpipe hose outlet)
- WS** Warden Station (WS)
(Fire phone or phone jack)
- FCS** Fire Command Station (FCS)- (See Ground Floor)
- Fire Dept. Connection**
(See Ground Fl. & Site Plan)
- Sprinkler Valve (SV)**
- Standpipe Valve (SPV)**
- Combo Valve (CV)**
(standpipe/sprinkler riser valve)

EXIT — Evacuation Route

Furniture/ Equip.
(furniture/ equipment/ removable partitions)

Permanent Partition
(non-removable permanent partitions)

Fire Barrier
(permanent part. walls of demising, corridors, & mech. equip. rooms)

In-Building Relocation Areas (IBRAs)

Sprinkled Areas (blue)
& Non-sprinkled Areas

*Shown on partially covered floors.
(See bottom right corner of plan for details)

NOTE: Not all devices and designations in legend may apply to this building

NO.	DATE:	ISSUED/ COMMENTS:
1	12.3.12	ISSUED FOR REVIEW
2	12.26.12	REVISED PER ARCHITECT ISSUED FOR REVIEW AND FILING

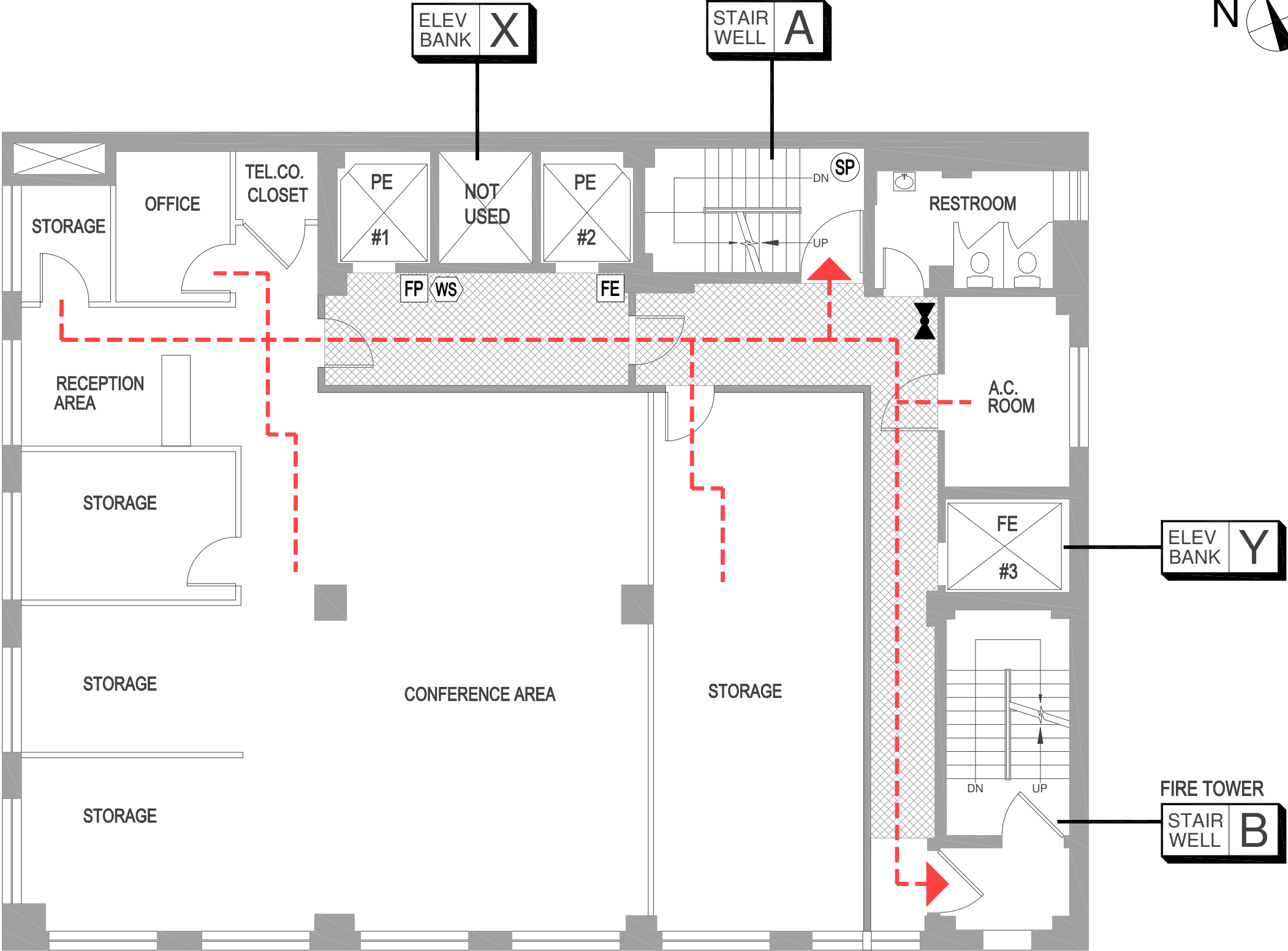
Drawn By: ES
Checked By: JG

BUILDING ADDRESS:
721-723 7th avenue
New York, N.Y. 10019

DRAWING TITLE:
FL- 8
8th Floor

SURVEY DATE:
11/6/12

SEVENTH AVENUE



LEGEND

- As designated on plans.
- FP** Fire-Alarm Pull (FP)
 - FE** Fire Extinguisher (FE)
 - SP** Standpipe (SP)
(with or w/o a hose)
 - FH** Fire Hose (FH)
(without standpipe hose outlet)
 - WS** Warden Station (WS)
(Fire phone or phone jack)
 - FCS** Fire Command Station (FCS)- (See Ground Floor)
 - Fire Dept. Connection**
(See Ground Fl. & Site Plan)
 - SV** Sprinkler Valve (SV)
 - SPV** Standpipe Valve (SPV)
 - CV** Combo Valve (CV)
(standpipe/sprinkler riser valve)
 - EXIT** Evacuation Route
 - Furniture/ Equip.**
(furniture/ equipment/ removable partitions)
 - Permanent Partition**
(non-removable permanent partitions)
 - Fire Barrier**
(permanent part. walls of demising, corridors, & mech. equip. rooms)
 - In-Building Relocation Areas (IBRAs)**
 - Sprinkled Areas (blue) & Non-sprinkled Areas**
*Shown on partially covered floors.
(See bottom right corner of plan for details)

NOTE: Not all devices and designations in legend may apply to this building

NO.	DATE:	ISSUED/ COMMENTS:
1	12.3.12	ISSUED FOR REVIEW
2	12.26.12	REVISED PER ARCHITECT ISSUED FOR REVIEW AND FILING

Drawn By: ES	Checked By: JG
-----------------	-------------------

BUILDING ADDRESS:
721-723 7th avenue
New York, N.Y. 10019

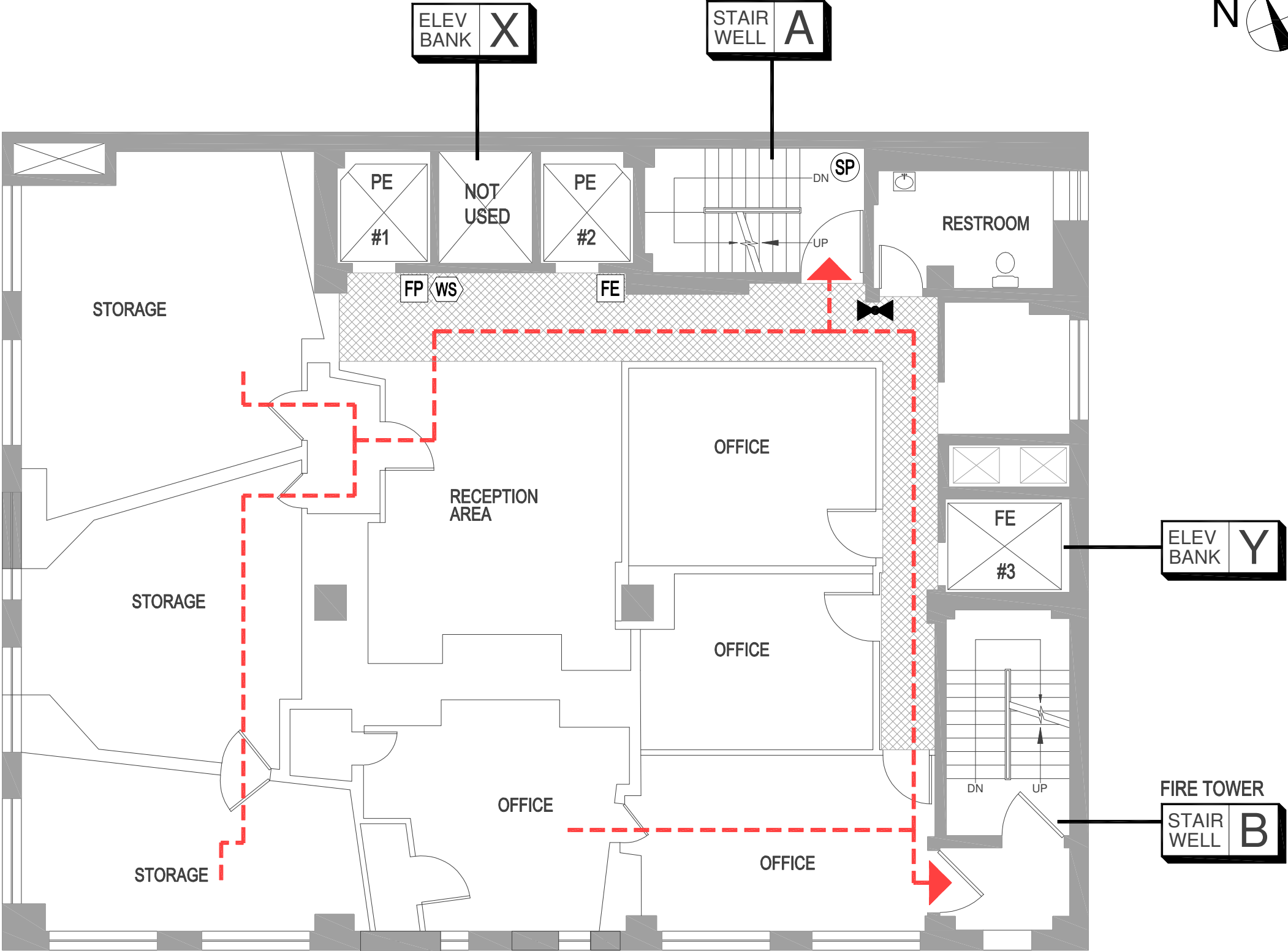
DRAWING TITLE:
FL-9
9th Floor

SURVEY DATE:
11/6/12

WEST 48TH STREET

NOTE: FULL SPRINKLER COVERAGE ON THIS FLOOR

SEVENTH AVENUE



LEGEND

- As designated on plans.
- FP** Fire-Alarm Pull (FP)
 - FE** Fire Extinguisher (FE)
 - SP** Standpipe (SP)
(with or w/o a hose)
 - FH** Fire Hose (FH)
(without standpipe hose outlet)
 - WS** Warden Station (WS)
(Fire phone or phone jack)
 - FCS** Fire Command Station (FCS)- (See Ground Floor)
 - Fire Dept. Connection
(See Ground Fl. & Site Plan)
 - SV** Sprinkler Valve (SV)
 - SPV** Standpipe Valve (SPV)
 - CV** Combo Valve (CV)
(standpipe/sprinkler riser valve)
 - EXIT** Evacuation Route
 - Furniture/ Equip.**
(furniture/ equipment/ removable partitions)
 - Permanent Partition**
(non-removable permanent partitions)
 - Fire Barrier**
(permanent part. walls of demising, corridors, & mech. equip. rooms)
 - In-Building Relocation Areas (IBRAs)**
 - Sprinkled Areas (blue) & Non-sprinkled Areas**
*Shown on partially covered floors.
(See bottom right corner of plan for details)

NOTE: Not all devices and designations in legend may apply to this building

NO.	DATE:	ISSUED/ COMMENTS:
1	12.3.12	ISSUED FOR REVIEW
2	12.26.12	REVISED PER ARCHITECT ISSUED FOR REVIEW AND FILING

Drawn By: ES	Checked By: JG
-----------------	-------------------

BUILDING ADDRESS:
721-723 7th avenue
New York, N.Y. 10019

DRAWING TITLE:
FL-10
10th Floor

SURVEY DATE:
11/6/12

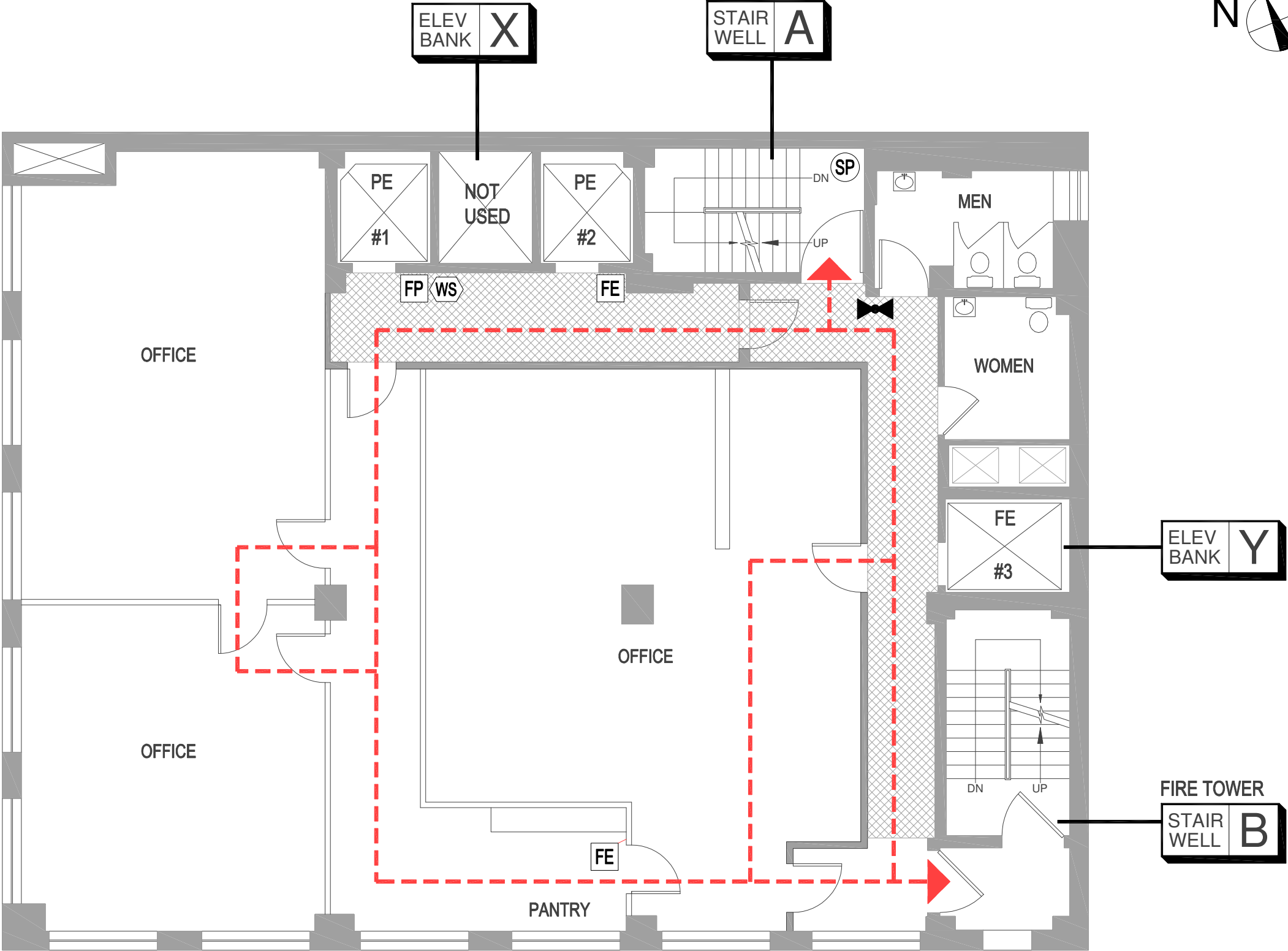
WEST 48TH STREET

NOTE: FULL SPRINKLER COVERAGE ON THIS FLOOR

DISCLAIMER: THESE DRAWINGS WERE CREATED FOR EAP AND/ OR FIRE SAFETY FILING ONLY. DO NOT SCALE DRAWING. EXISTING CONDITIONS AND DIMENSIONS MAY VARY AND ARE TO BE FIELD VERIFIED.



SEVENTH AVENUE



LEGEND

As designated on plans.

- FP** Fire-Alarm Pull (FP)
- FE** Fire Extinguisher (FE)
- SP** Standpipe (SP)
(with or w/o a hose)
- FH** Fire Hose (FH)
(without standpipe hose outlet)
- WS** Warden Station (WS)
(Fire phone or phone jack)
- FCS** Fire Command Station (FCS)- (See Ground Floor)
- Fire Dept. Connection
(See Ground Fl. & Site Plan)
- SV** Sprinkler Valve (SV)
- SPV** Standpipe Valve (SPV)
- CV** Combo Valve (CV)
(standpipe/sprinkler riser valve)

EXIT — Evacuation Route

Furniture/ Equip.
(furniture/ equipment/ removable partitions)

Permanent Partition
(non-removable permanent partitions)

Fire Barrier
(permanent part. walls of demising, corridors, & mech. equip. rooms)

In-Building Relocation Areas (IBRAs)

Sprinkled Areas (blue) & Non-sprinkled Areas

*Shown on partially covered floors.
(See bottom right corner of plan for details)

NOTE: Not all devices and designations in legend may apply to this building

NO.	DATE:	ISSUED/ COMMENTS:
1	12.3.12	ISSUED FOR REVIEW
2	12.26.12	REVISED PER ARCHITECT ISSUED FOR REVIEW AND FILING

Drawn By: ES
Checked By: JG

BUILDING ADDRESS:
721-723 7th avenue
New York, N.Y. 10019

DRAWING TITLE:
FL-11
11th Floor

SURVEY DATE:
11/6/12

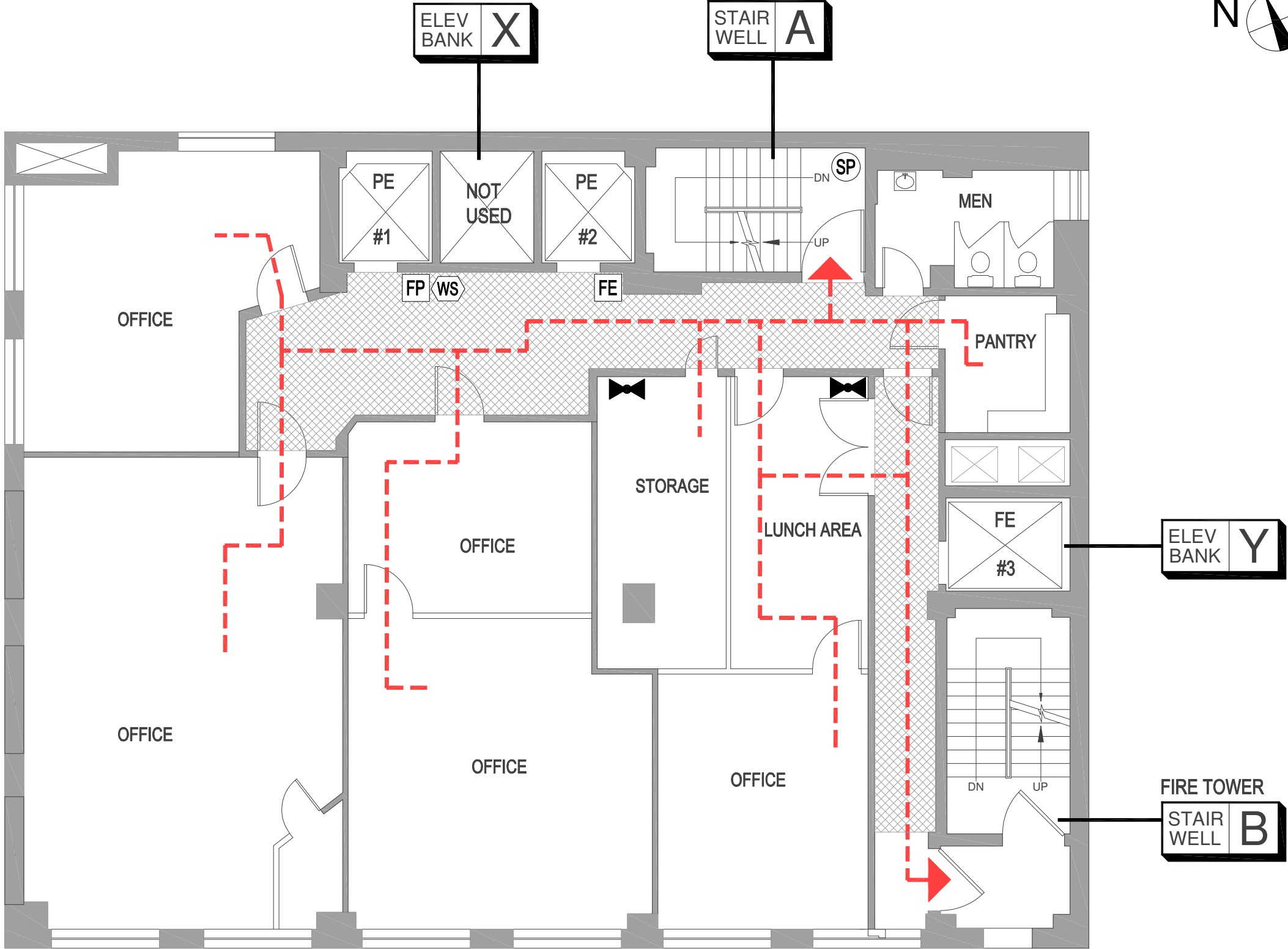
WEST 48TH STREET

NOTE: FULL SPRINKLER COVERAGE ON THIS FLOOR

DISCLAIMER: THESE DRAWINGS WERE CREATED FOR EAP AND/ OR FIRE SAFETY FILING ONLY. DO NOT SCALE DRAWING. EXISTING CONDITIONS AND DIMENSIONS MAY VARY AND ARE TO BE FIELD VERIFIED.



SEVENTH AVENUE



LEGEND

As designated on plans.

- FP** Fire-Alarm Pull (FP)
- FE** Fire Extinguisher (FE)
- SP** Standpipe (SP)
(with or w/o a hose)
- FH** Fire Hose (FH)
(without standpipe hose outlet)
- WS** Warden Station (WS)
(Fire phone or phone jack)
- FCS** Fire Command Station (FCS)- (See Ground Floor)
- Fire Dept. Connection**
(See Ground Fl. & Site Plan)
- SV** Sprinkler Valve (SV)
- SPV** Standpipe Valve (SPV)
- CV** Combo Valve (CV)
(standpipe/sprinkler riser valve)

EXIT — Evacuation Route

Furniture/ Equip.
(furniture/ equipment/ removable partitions)

Permanent Partition
(non-removable permanent partitions)

Fire Barrier
(permanent part. walls of demising, corridors, & mech. equip. rooms)

In-Building Relocation Areas (IBRAs)

Sprinkled Areas (blue)
& Non-sprinkled Areas

*Shown on partially covered floors.
(See bottom right corner of plan for details)

NOTE: Not all devices and designations in legend may apply to this building

NO.	DATE:	ISSUED/ COMMENTS:
1	12.3.12	ISSUED FOR REVIEW
2	12.26.12	REVISED PER ARCHITECT ISSUED FOR REVIEW AND FILING

Drawn By: ES Checked By: JG

BUILDING ADDRESS:
721-723 7th avenue
New York, N.Y. 10019

DRAWING TITLE:
FL-12
12th Floor

SURVEY DATE:
11/6/12

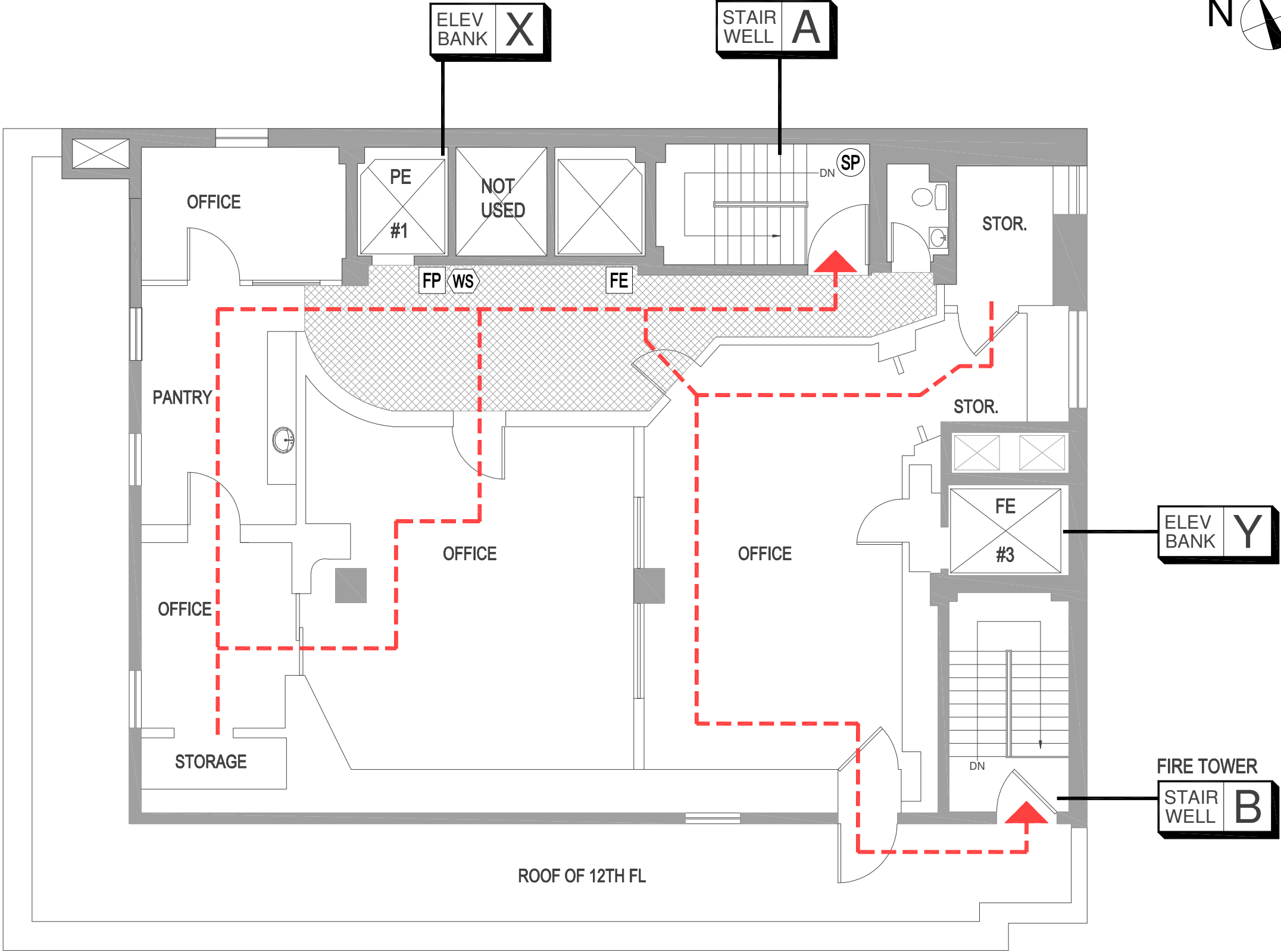
WEST 48TH STREET

NOTE: FULL SPRINKLER COVERAGE ON THIS FLOOR

DISCLAIMER: THESE DRAWINGS WERE CREATED FOR EAP AND/ OR FIRE SAFETY FILING ONLY. DO NOT SCALE DRAWING. EXISTING CONDITIONS AND DIMENSIONS MAY VARY AND ARE TO BE FIELD VERIFIED.



SEVENTH AVENUE



LEGEND

As designated on plans.

- FP** Fire-Alarm Pull (FP)
- FE** Fire Extinguisher (FE)
- SP** Standpipe (SP)
(with or w/o a hose)
- FH** Fire Hose (FH)
(without standpipe hose outlet)
- WS** Warden Station (WS)
(Fire phone or phone jack)
- FCS** Fire Command Station (FCS)- (See Ground Floor)
- Fire Dept. Connection**
(See Ground Fl. & Site Plan)
- Sprinkler Valve (SV)**
- Standpipe Valve (SPV)**
- Combo Valve (CV)**
(standpipe/sprinkler riser valve)

EXIT — Evacuation Route

Furniture/ Equip.
(furniture/ equipment/ removable partitions)

Permanent Partition
(non-removable permanent partitions)

Fire Barrier
(permanent part. walls of demising, corridors, & mech. equip. rooms)

In-Building Relocation Areas (IBRAs)

Sprinkled Areas (blue)
& Non-sprinkled Areas

*Shown on partially covered floors.
(See bottom right corner of plan for details)

NOTE: Not all devices and designations in legend may apply to this building

NO.	DATE:	ISSUED/ COMMENTS:
1	12.3.12	ISSUED FOR REVIEW
2	12.26.12	REVISED PER ARCHITECT ISSUED FOR REVIEW AND FILING

Drawn By: ES Checked By: JG

BUILDING ADDRESS:
721-723 7th avenue
New York, N.Y. 10019

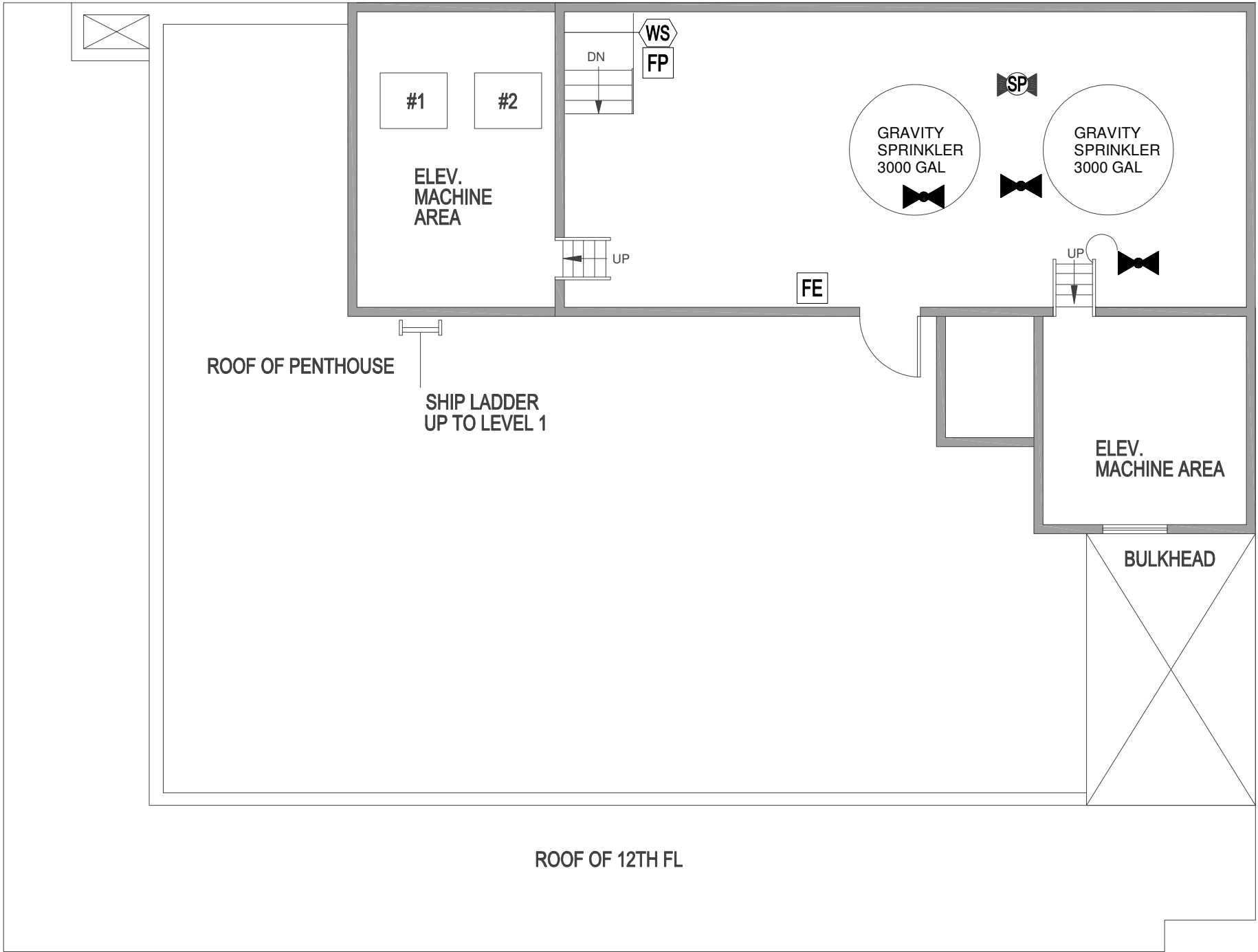
DRAWING TITLE:
FL-12P
PENTHOUSE

SURVEY DATE:
11/6/12

WEST 48TH STREET

NOTE: FULL SPRINKLER COVERAGE ON THIS FLOOR

SEVENTH AVENUE



WEST 48TH STREET

NOTE: FULL SPRINKLER COVERAGE ON THIS FLOOR



LEGEND

As designated on plans.

- FP** Fire-Alarm Pull (FP)
- FE** Fire Extinguisher (FE)
- SP** Standpipe (SP)
(with or w/o a hose)
- FH** Fire Hose (FH)
(without standpipe hose outlet)
- WS** Warden Station (WS)
(Fire phone or phone jack)
- FCS** Fire Command Station (FCS)- (See Ground Floor)
- Fire Dept. Connection**
(See Ground Fl. & Site Plan)
- SV** Sprinkler Valve (SV)
- SPV** Standpipe Valve (SPV)
- CV** Combo Valve (CV)
(standpipe/sprinkler riser valve)

EXIT Evacuation Route

Furniture/ Equip.
(furniture/ equipment/ removable partitions)

Permanent Partition
(non-removable permanent partitions)

Fire Barrier
(permanent part. walls of demising, corridors, & mech. equip. rooms)

In-Building Relocation Areas (IBRAs)

Sprinkled Areas (blue)
& Non-sprinkled Areas

*Shown on partially covered floors.
(See bottom right corner of plan for details)

NOTE: Not all devices and designations in legend may apply to this building

NO.	DATE:	ISSUED/ COMMENTS:
1	12.3.12	ISSUED FOR REVIEW
2	12.26.12	REVISED PER ARCHITECT ISSUED FOR REVIEW AND FILING

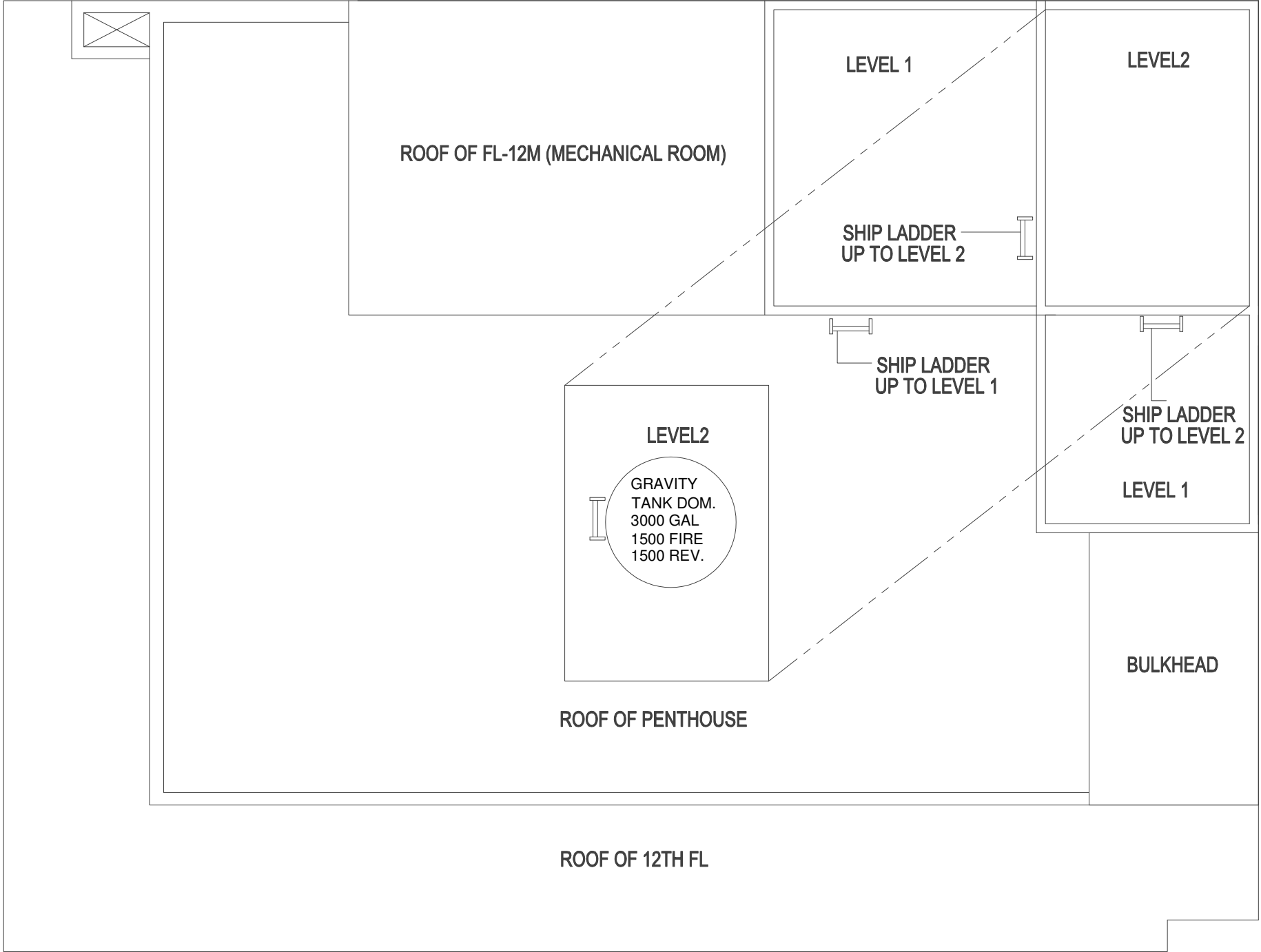
Drawn By: ES
Checked By: JG

BUILDING ADDRESS:
721-723 7th avenue
New York, N.Y. 10019

DRAWING TITLE:
FL-12M
MECHANICAL

SURVEY DATE:
11/6/12

SEVENTH AVENUE



WEST 48TH STREET

NOTE: FULL SPRINKLER COVERAGE ON THIS FLOOR



LEGEND

As designated on plans.

- Fire-Alarm Pull (FP)
- Fire Extinguisher (FE)
- Standpipe (SP)
(with or w/o a hose)
- Fire Hose (FH)
(without standpipe hose outlet)
- Warden Station (WS)
(Fire phone or phone jack)
- Fire Command Station (FCS)- (See Ground Floor)
- Fire Dept. Connection
(See Ground Fl. & Site Plan)
- Sprinkler Valve (SV)
- Standpipe Valve (SPV)
- Combo Valve (CV)
(standpipe/sprinkler riser valve)

EXIT **Evacuation Route**

Furniture/ Equip.
(furniture/ equipment/ removable partitions)

Permanent Partition
(non-removable permanent partitions)

Fire Barrier
(permanent part. walls of demising, corridors, & mech. equip. rooms)

In-Building Relocation Areas (IBRAs)

Sprinkled Areas (blue) & Non-sprinkled Areas

*Shown on partially covered floors.
(See bottom right corner of plan for details)

NOTE: Not all devices and designations in legend may apply to this building

NO.	DATE:	ISSUED/ COMMENTS:
1	12.3.12	ISSUED FOR REVIEW
2	12.26.12	REVISED PER ARCHITECT ISSUED FOR REVIEW AND FILING

Drawn By: ES	Checked By: JG
-----------------	-------------------

BUILDING ADDRESS:
721-723 7th avenue
New York, N.Y. 10019

DRAWING TITLE:

FR-1
ROOF

SURVEY DATE:
11/6/12