

BRAND NEW **BUILDING UPGRADES**

2300 CROWN COLONY DRIVE

Quincy, Massachusetts

OFFICE SPACE

2,736 - 24,797 SF Available



2300 CROWN COLONY DRIVE

Quincy, Massachusetts



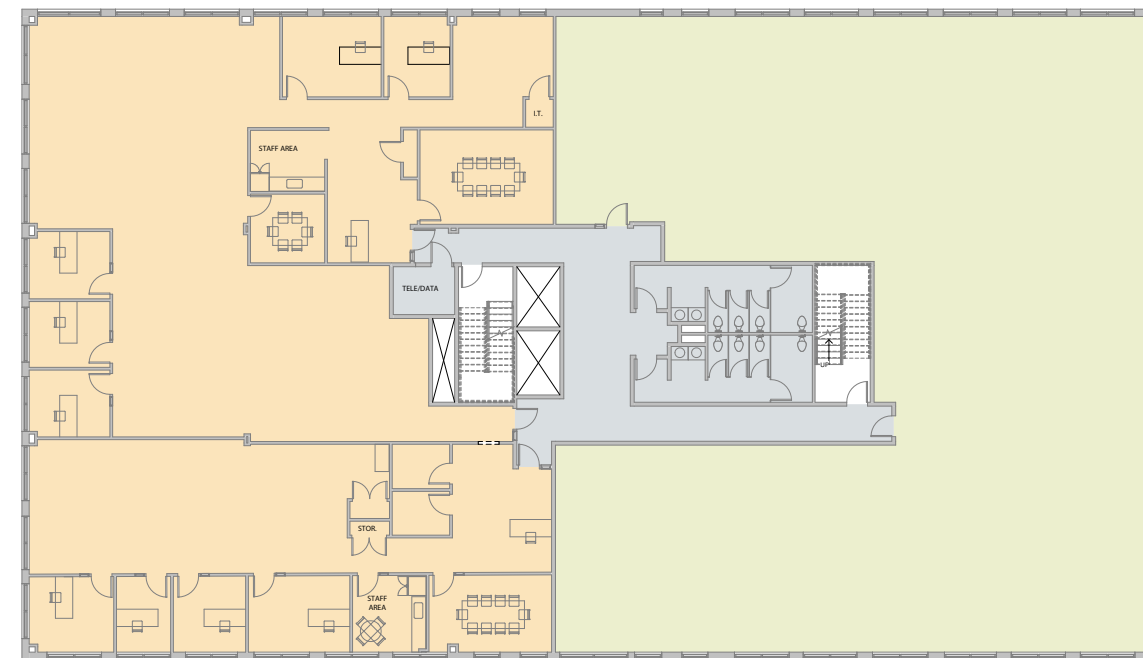
PROPERTY SPECIFICATIONS

BUILDING SIZE:	45,120 SF
PROPERTY TYPE:	Class A Office
FLOORS:	3
AVAILABLE SF:	Floor 2: 8,104 SF (subdivides to 5,368 & 2,736 SF) Floor 3: 16,693 SF
YEAR BUILT:	1999
PARKING RATIO:	3.40/1,000 SF
LOCATION:	Surrounded by Downtown Boston and Cambridge. Strategically located at the intersection of Route 3 and Interstates 93 and 95, the Property offers tremendous transportation options along the regions most traveled highways. Additionally, the Property is located less than a mile away from the Quincy Adams station, offering unparalleled transit access via the MBTA Red Line.

BUILDING SPECIFICATIONS

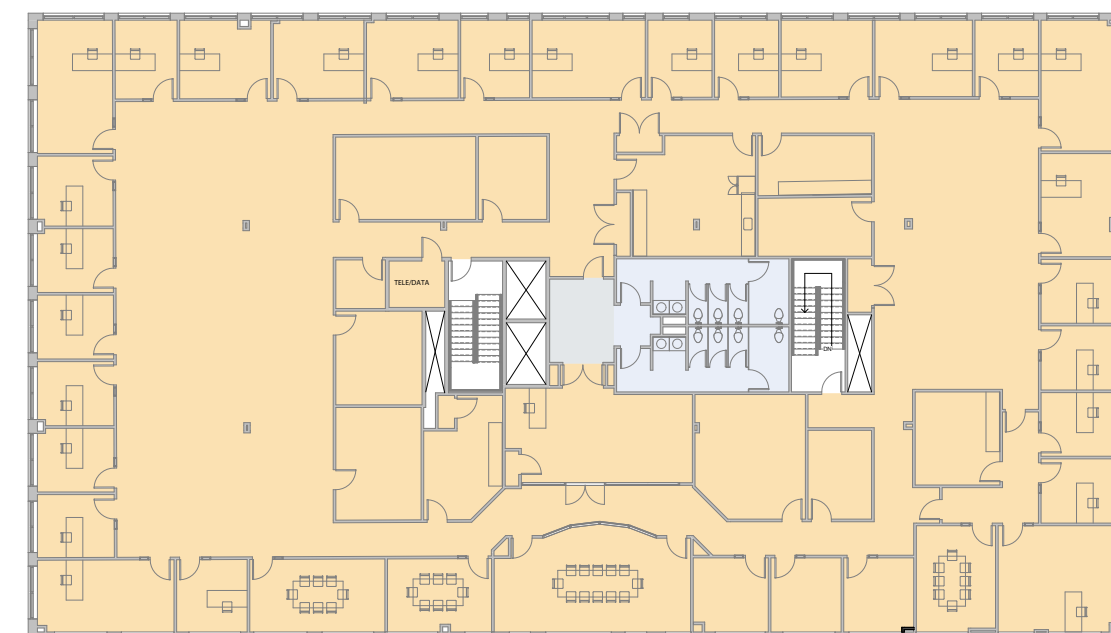
LOADING:	7 loading docks with levelers, bumpers & seals
HVAC:	New system in 2017
AIR CONDITIONING:	Office/Flex areas
SPRINKLERS:	Wet sprinkler system throughout
COLUMN SPACING:	30' w x 40' d
POWER:	4,000 amps; 480/277 volt, 3-phase, 4 wire throughout entire building
ROOF:	New Roof in 2017
UTILITIES:	<i>Gas:</i> National Grid <i>Electric:</i> National Grid <i>Water/Sewer:</i> City of Quincy

FLOOR 2: 8,104 SF (SUBDIVIDES TO 5,368 & 2,736 SF)



COMMON AREA
SUITE 200
SUITE 202 & 203
MAJOR VERTICAL PENETRATIONS

FLOOR 3: 16,693 SF



COMMON AREA
SUITE 300
MAJOR VERTICAL PENETRATIONS

FOR LEASE **OFFICE SPACE**

2300 CROWN COLONY DRIVE

Quincy, Massachusetts

2,736 - 24,797 SF Available



CONTACT US TO ARRANGE A TOUR

NED HALLORAN

Executive Vice President

617.457.3372

nhalloran@hunnemanre.com

LEEANNE RIZZO

Executive Vice President

617.457.3371

lrizzo@hunnemanre.com

@2024 Hunneman. All rights reserved. All information has been obtained from sources believed reliable but no warranty or representation is verified for accuracy or completeness. Caution and independent investigation of property and information should be verified. Reliance on this information is at your own risk.



303 Congress Street, Boston, MA 02210 617.457.3400 www.hunnemanre.com