



FAIRFIELD MEDICAL PLAZA

FOR LEASE

2015 FAIRFIELD AVENUE, SHREVEPORT, LA 71104

- Office Space For Lease:
Suite A: 1,829 SF
Suite 2B: 3,094 SF
Suite E: 1,953 SF
- Convenient Parking
- Excellent Location in the Heart of Major Medical District
- Great Visibility and Signage
- Easy Access Via I-49 and I-20
- Full Service Lease Includes Utilities and Janitorial



For more information, contact:

Hilary Bransford | 318.222.2244

hbransford@vintagerealty.com | vintagerealty.com

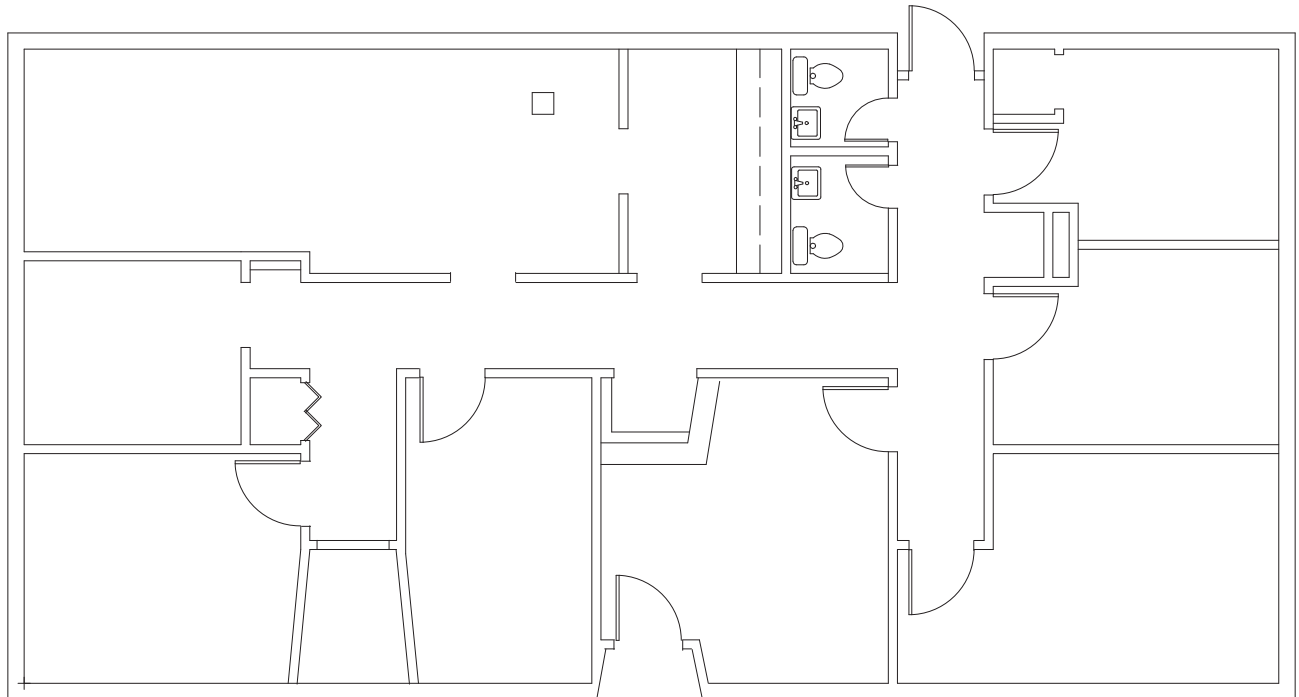
ALL INFORMATION CONTAINED HEREIN IS BELIEVED TO BE ACCURATE, BUT IS NOT WARRANTED AND NO LIABILITY OF ERRORS OR OMISSIONS IS ASSURED BY EITHER THE PROPERTY OWNER OR VINTAGE REALTY COMPANY OR ITS AGENTS AND EMPLOYEES. PRICES AS STATED HEREIN AND PRODUCT AVAILABILITY IS SUBJECT TO CHANGE AND/OR SALE OR LEASE WITHOUT PRIOR NOTICE, AND ALL SIZES AND DIMENSIONS ARE SUBJECT TO CORRECTION. REV 9/2024



FAIRFIELD MEDICAL PLAZA FOR LEASE

2015 FAIRFIELD AVENUE
SHREVEPORT, LA 71104

SUITE A FLOOR PLAN



1,829 SF



For more information, contact:

Hilary Bransford | 318-222-2244

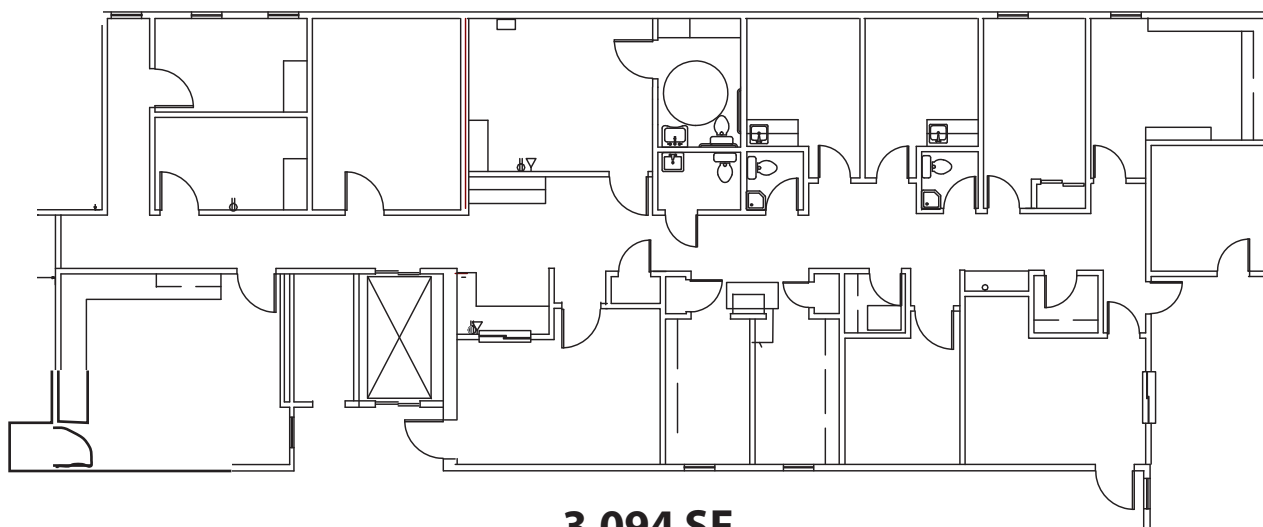
hbransford@vintagerealty.com | vintagerealty.com

ALL INFORMATION CONTAINED HEREIN IS BELIEVED TO BE ACCURATE, BUT IS NOT WARRANTED AND NO LIABILITY OF ERRORS OR OMISSIONS IS ASSURED BY EITHER THE PROPERTY OWNER OR VINTAGE REALTY COMPANY OR ITS AGENTS AND EMPLOYEES. PRICES AS STATED HEREIN AND PRODUCT AVAILABILITY IS SUBJECT TO CHANGE AND/OR SALE OR LEASE WITHOUT PRIOR NOTICE, AND ALL SIZES AND DIMENSIONS ARE SUBJECT TO CORRECTION. 2/2025

FAIRFIELD MEDICAL PLAZA FOR LEASE

2015 FAIRFIELD AVENUE
SHREVEPORT, LA 71104

SUITE 2B FLOOR PLAN



3,094 SF



For more information, contact:

Hilary Bransford | 318-222-2244

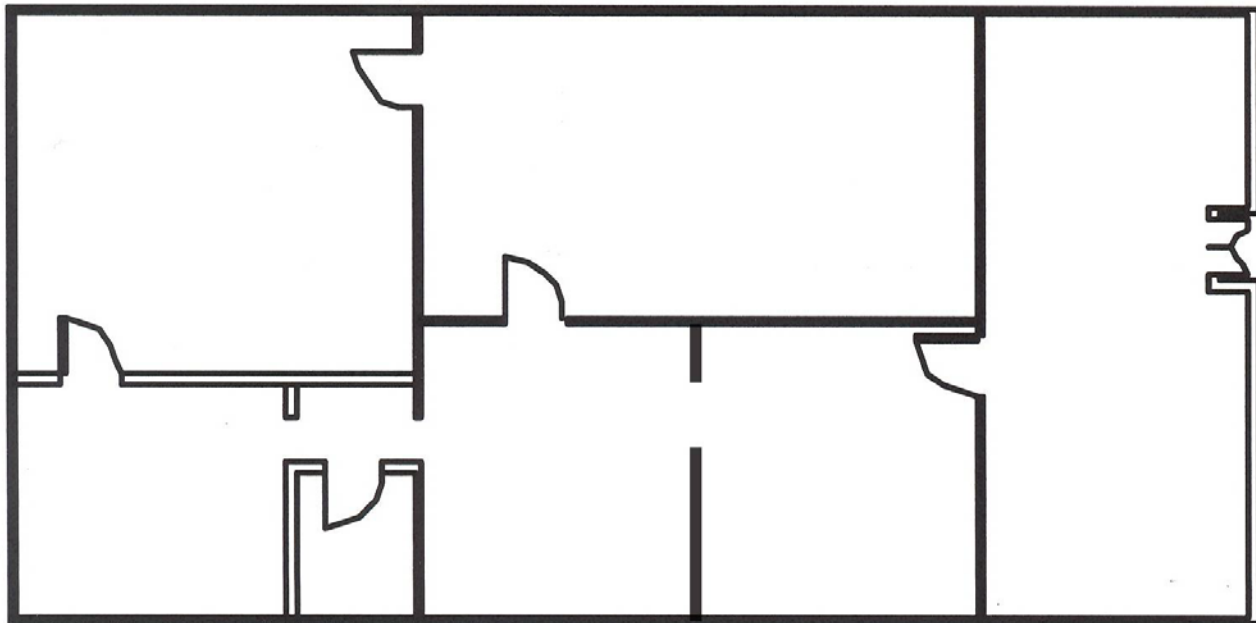
hbransford@vintagerealty.com | vintagerealty.com

ALL INFORMATION CONTAINED HEREIN IS BELIEVED TO BE ACCURATE, BUT IS NOT WARRANTED AND NO LIABILITY OF ERRORS OR OMISSIONS IS ASSURED BY EITHER THE PROPERTY OWNER OR VINTAGE REALTY COMPANY OR ITS AGENTS AND EMPLOYEES. PRICES AS STATED HEREIN AND PRODUCT AVAILABILITY IS SUBJECT TO CHANGE AND/OR SALE OR LEASE WITHOUT PRIOR NOTICE, AND ALL SIZES AND DIMENSIONS ARE SUBJECT TO CORRECTION. 2/2025

FAIRFIELD MEDICAL PLAZA FOR LEASE

2015 FAIRFIELD AVENUE
SHREVEPORT, LA 71104

SUITE E FLOOR PLAN



1,953 SF



For more information, contact:

Hilary Bransford | 318-222-2244

hbransford@vintagerealty.com | vintagerealty.com

ALL INFORMATION CONTAINED HEREIN IS BELIEVED TO BE ACCURATE, BUT IS NOT WARRANTED AND NO LIABILITY OF ERRORS OR OMISSIONS IS ASSURED BY EITHER THE PROPERTY OWNER OR VINTAGE REALTY COMPANY OR ITS AGENTS AND EMPLOYEES. PRICES AS STATED HEREIN AND PRODUCT AVAILABILITY IS SUBJECT TO CHANGE AND/OR SALE OR LEASE WITHOUT PRIOR NOTICE, AND ALL SIZES AND DIMENSIONS ARE SUBJECT TO CORRECTION. 2/2025

FAIRFIELD MEDICAL PLAZA FOR LEASE

2015 FAIRFIELD AVENUE
SHREVEPORT, LA 71104



For more information, contact:

Hilary Bransford | 318-222-2244

hbransford@vintagerealty.com | vintagerealty.com

ALL INFORMATION CONTAINED HEREIN IS BELIEVED TO BE ACCURATE, BUT IS NOT WARRANTED AND NO LIABILITY OF ERRORS OR OMISSIONS IS ASSURED BY EITHER THE PROPERTY OWNER OR VINTAGE REALTY COMPANY OR ITS AGENTS AND EMPLOYEES. PRICES AS STATED HEREIN AND PRODUCT AVAILABILITY IS SUBJECT TO CHANGE AND/OR SALE OR LEASE WITHOUT PRIOR NOTICE, AND ALL SIZES AND DIMENSIONS ARE SUBJECT TO CORRECTION. 2/2025