

# SUBLEASE 1,104 SQ.FT.

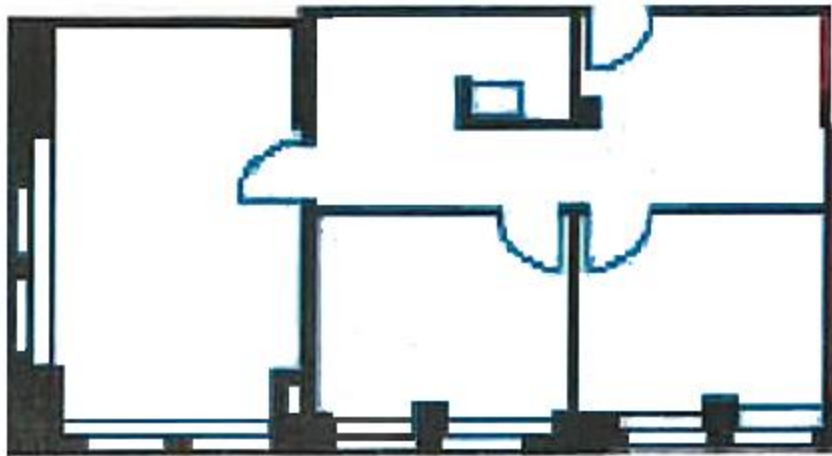
**25  
ADELAIDE  
STREET E  
Suite 1914**



Area: 1,104 sq.ft.  
Net Rent: Call Sub-Listing Agent  
Additional: \$21.29 per sq.ft.  
Available: 30-60 Days  
Expiry: March 30, 2028

**EVAN COOK**  
Sales Representative  
416.477.7404  
[ecook@titanyork.com](mailto:ecook@titanyork.com)

**Titan·York**  
Realty Corporation, Brokerage  
2300 Yonge Street, Suite 1903  
Toronto, ON M4P 1E4



Located on the  
Southwest corner of  
Adelaide Street East and  
Victoria Street



Steps from King subway  
and the PATH



Built out with 2 private  
offices, meeting room,  
reception, kitchenette  
and open area



Furniture available

# 25 Adelaide Street East

**RENEW.  
RELOCATE.  
EXPAND.**