

# U.C.K. Conversion- Cortland, NY Site Security & Signage Concept

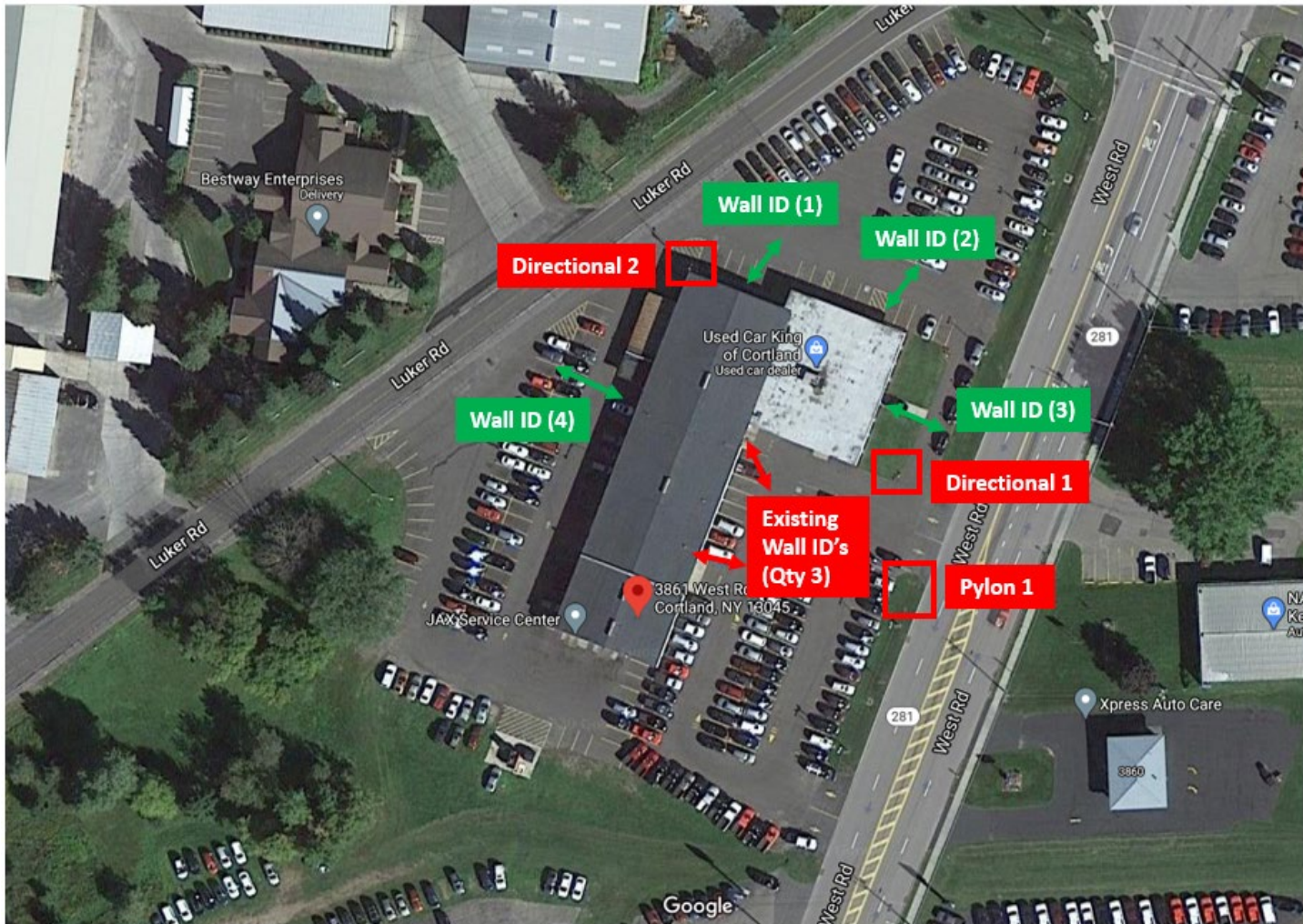
January 27, 2021

**EchoPark**<sup>®</sup>  
AUTOMOTIVE

# Cortland, NY – Conceptual Site Plan



# Cortland, NY – Existing Site Signage Plan



- Remove all existing Used Car King wall signage
- For lit sign locations NOT reused, cap and terminate electrical connections (see following pages for locations to be reused)



## Cortland, NY – Main Building ID Sign

---

- Remove existing Used Car King Signage
- Install new EchoPark dimensional sign at current sign location
- Reuse existing power connection and time clock



Existing

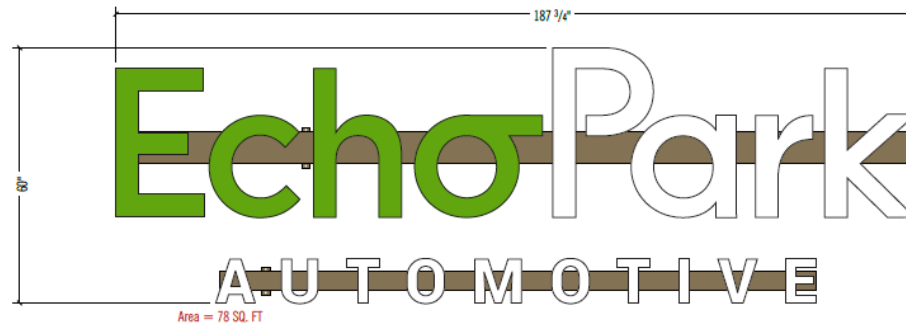


Proposed New

# Cortland, NY – Main Building ID Sign Details



Photo Overlay (NTS) 1/8" = 1'-0"



2 BUILDING LOGO  
1/2" = 1'-0"

**COLORS & FINISHES:**

- MP 78807 Green (PMS 369C Plus Series)**  
Channel Letters (edges & back) "Echo"
- N202 White**  
Channel Letters (edges & back)  
"Park, Automotive"
- TBD / (PMS)**  
Raceway

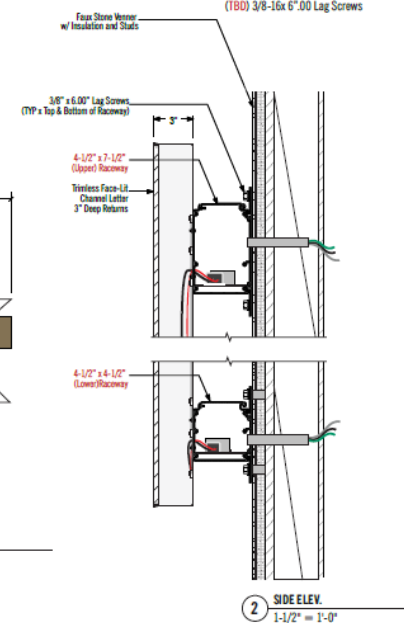
**DIGITAL PRINT COLORS:**

- PMS 370C (Translucent Vinyl)**  
Channel Letter Face "Echo"
- Oracal 8800-010 White Trans. Vinyl**  
Channel Letter Face "Park, Automotive"

**CONSTRUCTION SPECIFICATIONS:**

- Chnl. Ltr's on Raceways:**  
3" Deep White Acrylic Trimless face-lit  
w/ internal LED light system, power  
supply & surge protection (120V to sign)
- Raceway:**  
(1) Aluminum Fab. 4 1/2"H x 4 1/2"D  
(1) Aluminum Fab. 7 1/2"H x 4 1/2"D  
(Mount Tabs every 36"(Min) 48"(Max))

- HARDWARE:**  
(TBD) 3/8-16x 6".00 Lag Screws



## Cortland, NY – Building Gateway Sign

---



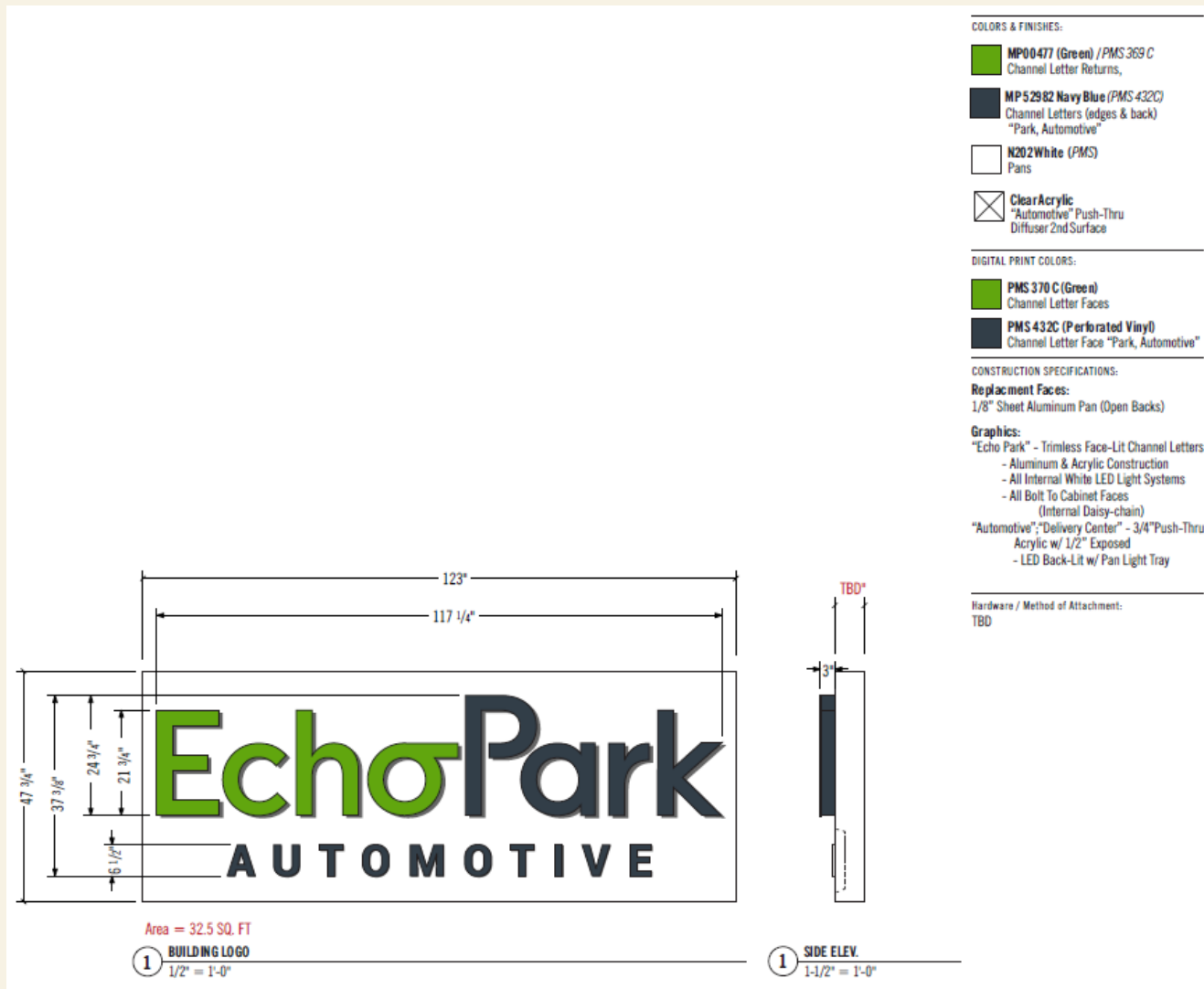
Existing



Proposed New

- Remove existing Used Car King Signage
- Install new EchoPark dimensional sign on white backer panel
- New white logo panel metal over existing green panels occupied by current signage
- Reuse existing power connection and time clock

# Cortland, NY –Building Gateway Sign Details



## Cortland, NY – Pylon Sign



Existing

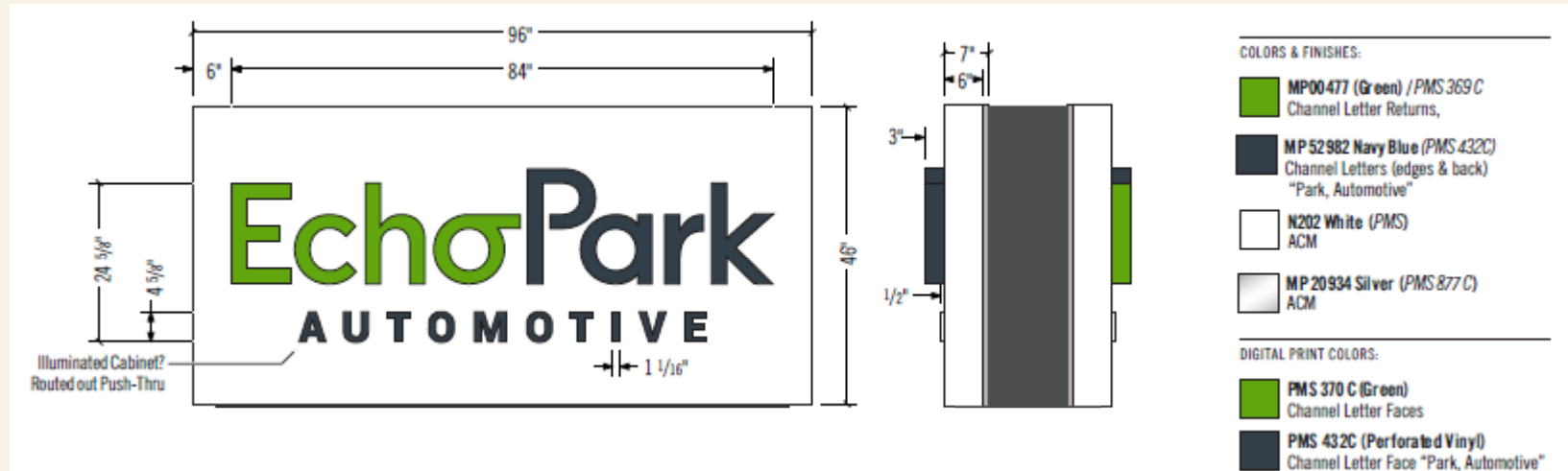


Proposed New

- Remove existing Used Car King Signage from pylon
- Install new EchoPark dimensional sign on white backer panel on (2) sides of pylon
- New white backer panels to replace existing top two green panels on each side
- Reuse existing power connection and time clock



## Cortland, NY –Pylon Sign Details



## Cortland, NY – Directional Signs

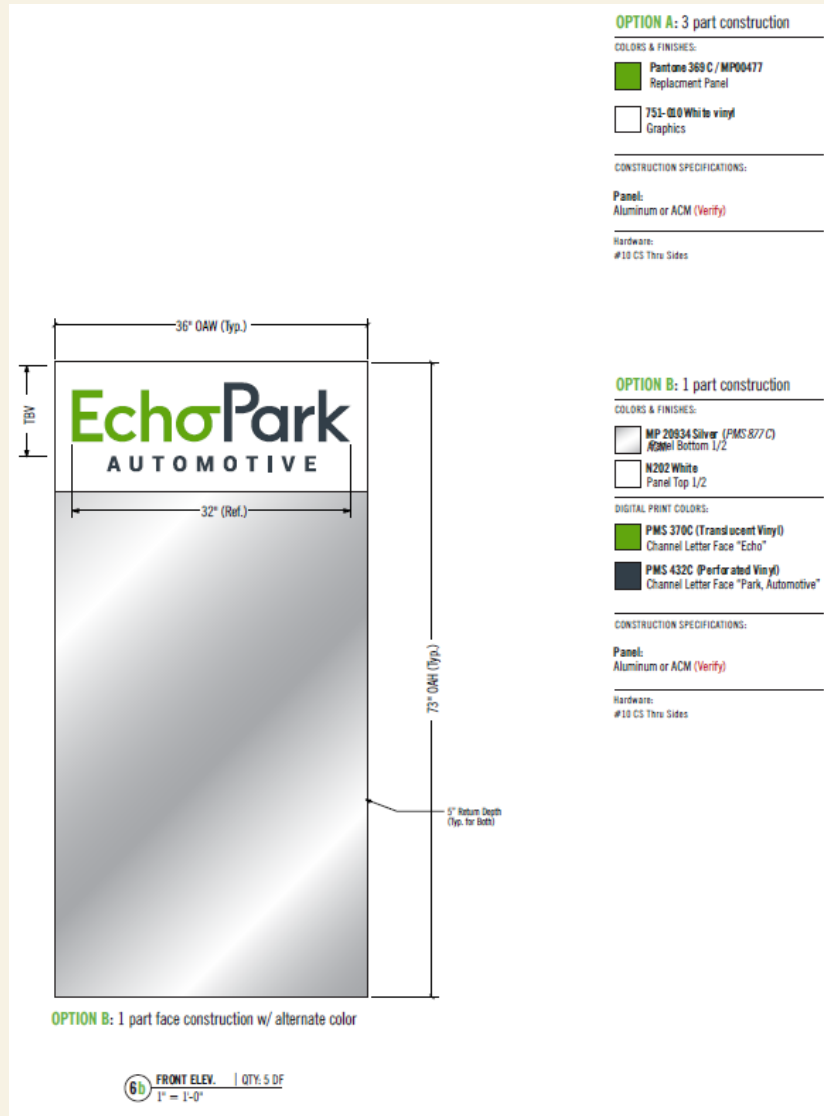


Existing

Proposed New

- Bag existing directional signs with white covers printed with EchoPark logo

# Cortland, NY – Directional Sign Details



# Cortland, NY – Restricted Signs – Guest and Handicap Parking

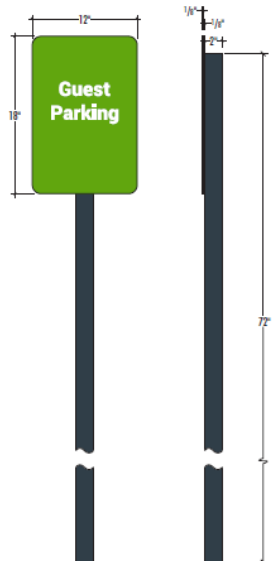
## EG-7.1: Guest Parking



(QTY. 43)

PARKING ID MESSAGE SCHEDULE

1" = 1'-0"



## EG-7.3: Handicap Parking (& Van Access Tag)



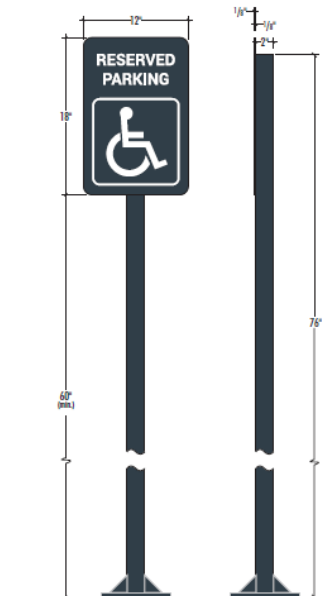
(QTY. 4)



(QTY. 2)

PARKING ID MESSAGE SCHEDULE

1" = 1'-0"



### COLORS & FINISHES:

- PMS389 / MP00477 (Green)**  
Backer & Panel (all)
- PMS 432C / MP52982**  
Backer & Panel (all), Post & Cap (all)
- SC900-101-0 White Vinyl**  
Graphics
- 1200-101-R (Reflective White Vinyl)**  
Handicap Graphics

### CONSTRUCTION SPECIFICATIONS:

**Panel:**  
.125" aluminum w/ 1" Radius Corners

**Backer:**  
.125" aluminum w/ 1" Radius Corners

**Post:**  
2" x 2"



EchoPark<sup>®</sup>

AUTOMOTIVE

*Every Car Deserves A Happy Owner*