

2120 S. WASHINGTON AVENUE
LANSING, MICHIGAN



**SIGNATURE
ASSOCIATES**
KNOW SIGNATURE | KNOW RESULTS

INDUSTRIAL FOR LEASE
5,000 – 114,037 Square Feet Available



TEMPORARY OR LONG-TERM STORAGE AVAILABLE

PROPERTY FEATURES

- 5,000 - 114,037 square feet available
- Office square footage to suit
- 16'-18' clear height
- (1) 17x14 grade level door, (5) truckwells
- Zoned industrial
- 50+ parking spaces
- 600 amps, 440 volts, 3-phase power
- New roof (2024), new electrical service, new LED lighting throughout
- Active rail spur coming into the building
- Lease Rate: \$5.50/sq. ft. NNN
(Price adjusted for size and term)
- Contact Broker about sale information



For more information, please contact:

KRIS PAWLOWSKI
(248) 359 3801
kpawlowski@signatureassociates.com

GARY STEPHENS
(248) 948 0104
gstephens@signatureassociates.com

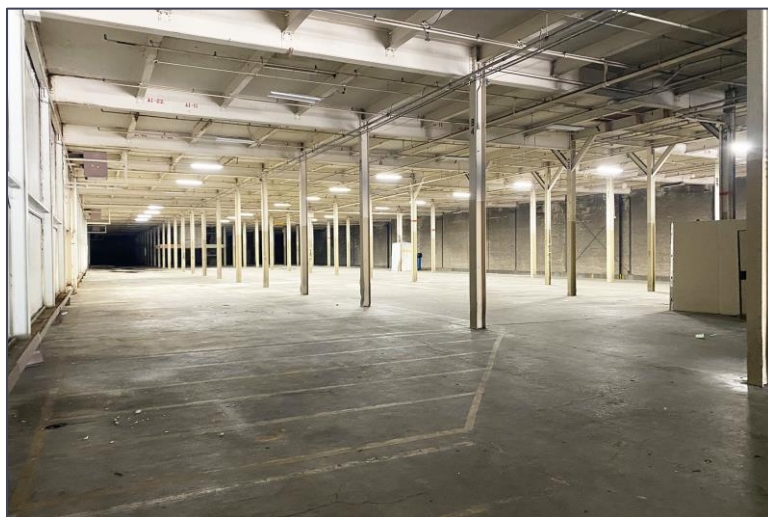
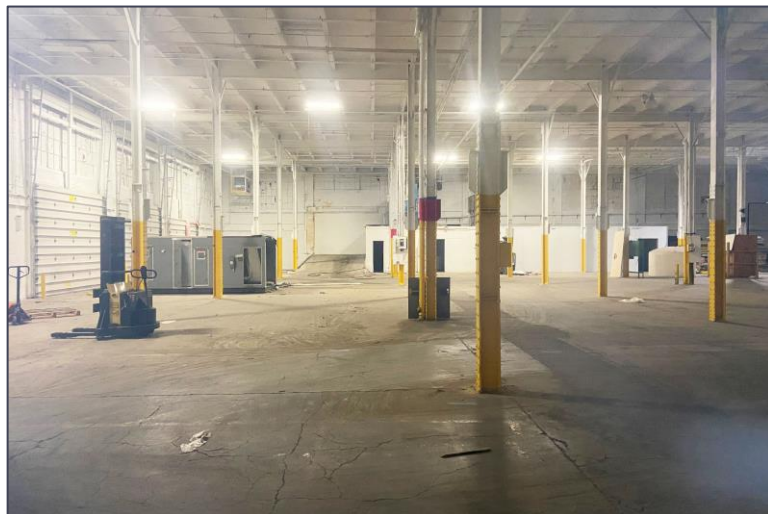
SIGNATURE ASSOCIATES
One Towne Square, Suite 1200
Southfield, MI 48076
www.signatureassociates.com

2120 S. Washington Avenue – Lansing, Michigan

Industrial For Lease

5,000 - 114,037
Square Feet
AVAILABLE

Additional Photos



For more information, please contact:

KRIS PAWLOWSKI
(248) 359 3801
kpawlowski@signatureassociates.com

GARY STEPHENS
(248) 948 0104
gstephens@signatureassociates.com

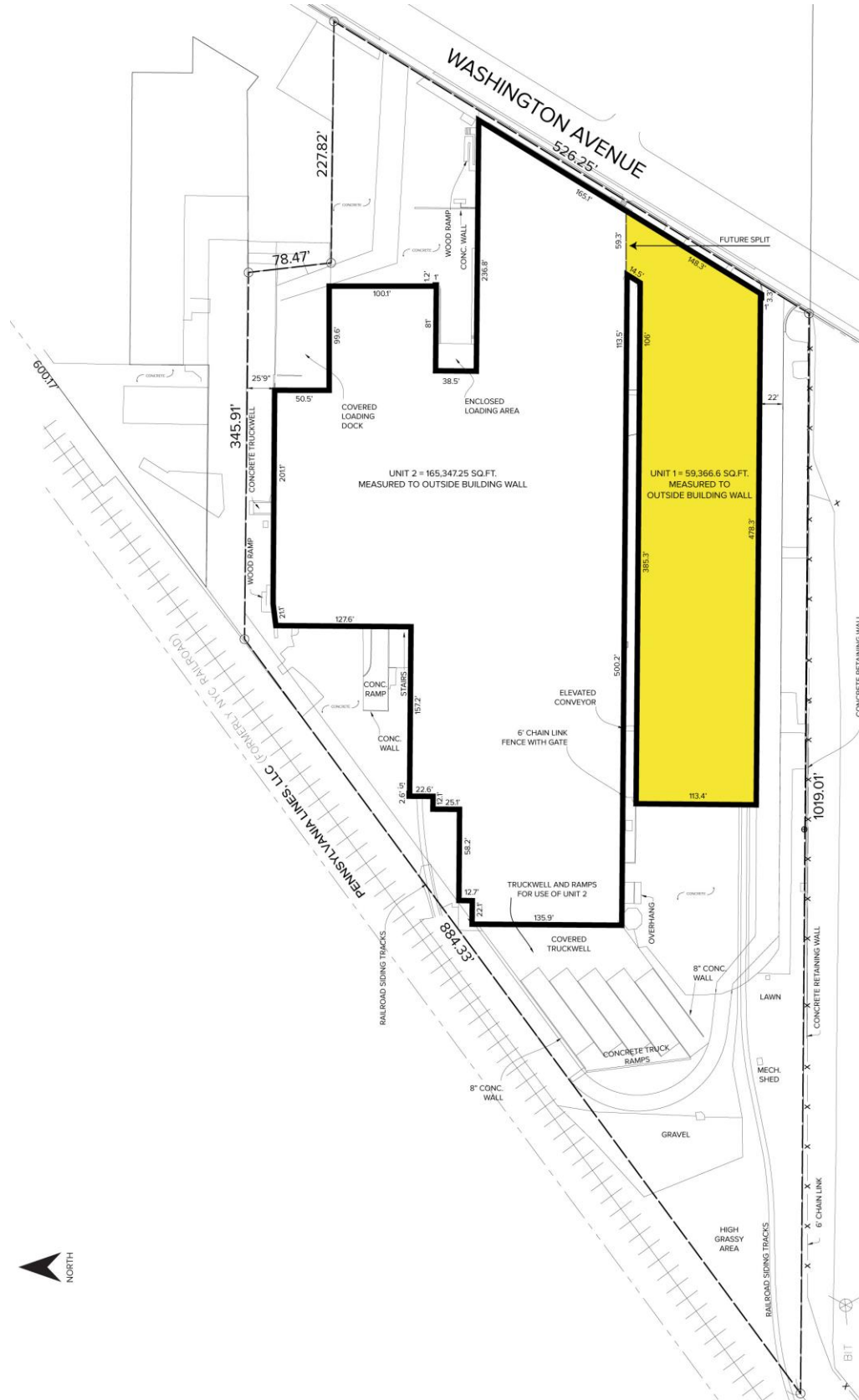
SIGNATURE ASSOCIATES
One Towne Square, Suite 1200
Southfield, MI 48076
www.signatureassociates.com

2120 S. Washington Avenue – Lansing, Michigan

Industrial For Lease

5,000 - 114,037
Square Feet
AVAILABLE

Site Plan



For more information, please contact:

KRIS PAWLOWSKI
(248) 359 3801
kpawlowski@signatureassociates.com

GARY STEPHENS
(248) 948 0104
gstephens@signatureassociates.com

SIGNATURE ASSOCIATES
One Towne Square, Suite 1200
Southfield, MI 48076
www.signatureassociates.com

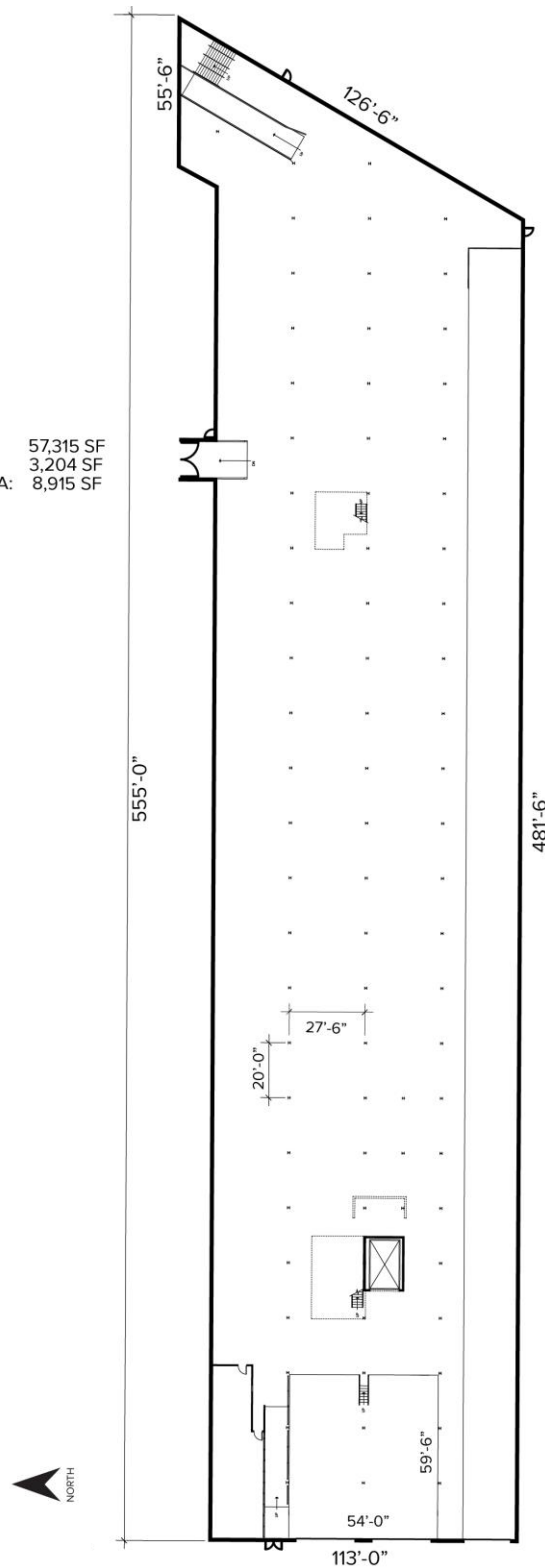
2120 S. Washington Avenue – Lansing, Michigan

Industrial For Lease

5,000 - 114,037
Square Feet
AVAILABLE

Floor Plan – First Floor

TOTAL AREA: 57,315 SF
DOCK AREA: 3,204 SF
RAILROAD AREA: 8,915 SF



For more information, please contact:

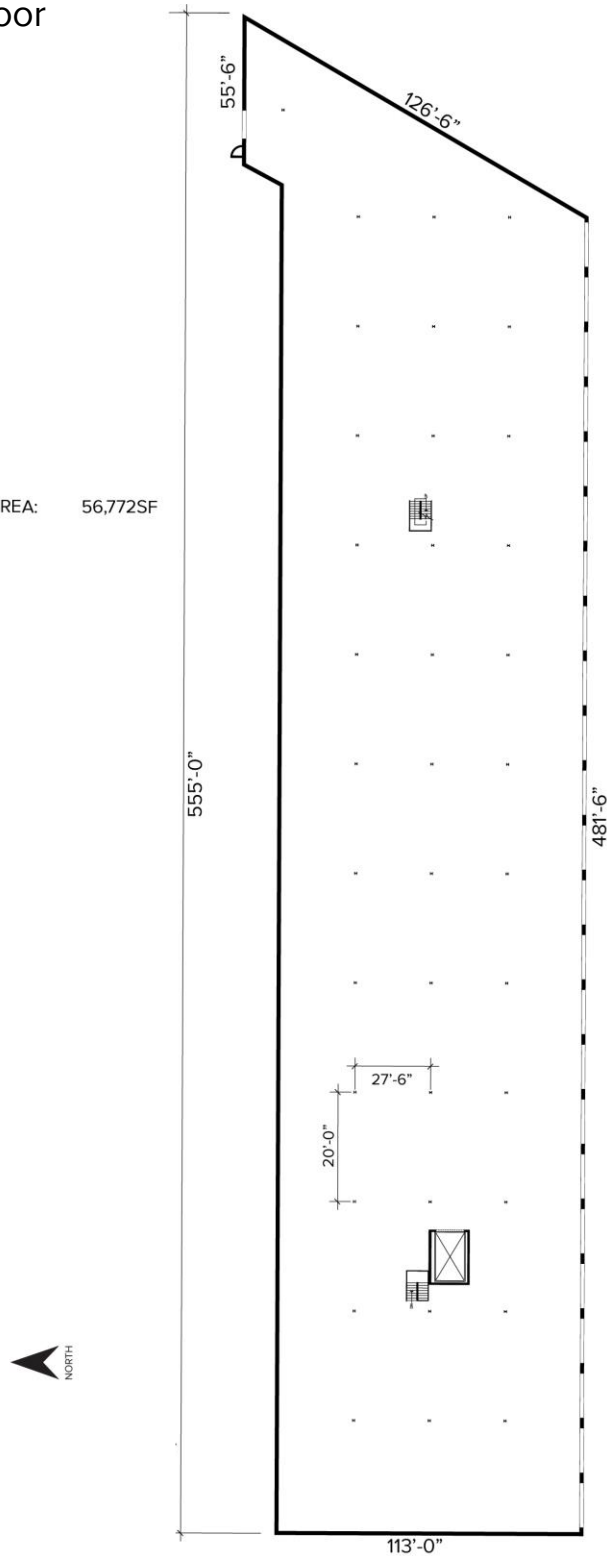
KRIS PAWLOWSKI
(248) 359 3801
kpawlowski@signatureassociates.com

GARY STEPHENS
(248) 948 0104
gstephens@signatureassociates.com

SIGNATURE ASSOCIATES
One Towne Square, Suite 1200
Southfield, MI 48076
www.signatureassociates.com

Floor Plan – Second Floor

TOTAL AREA: 56,772SF



For more information, please contact:

KRIS PAWLOWSKI
(248) 359 3801
kpawlowski@signatureassociates.com

GARY STEPHENS
(248) 948 0104
gstephens@signatureassociates.com

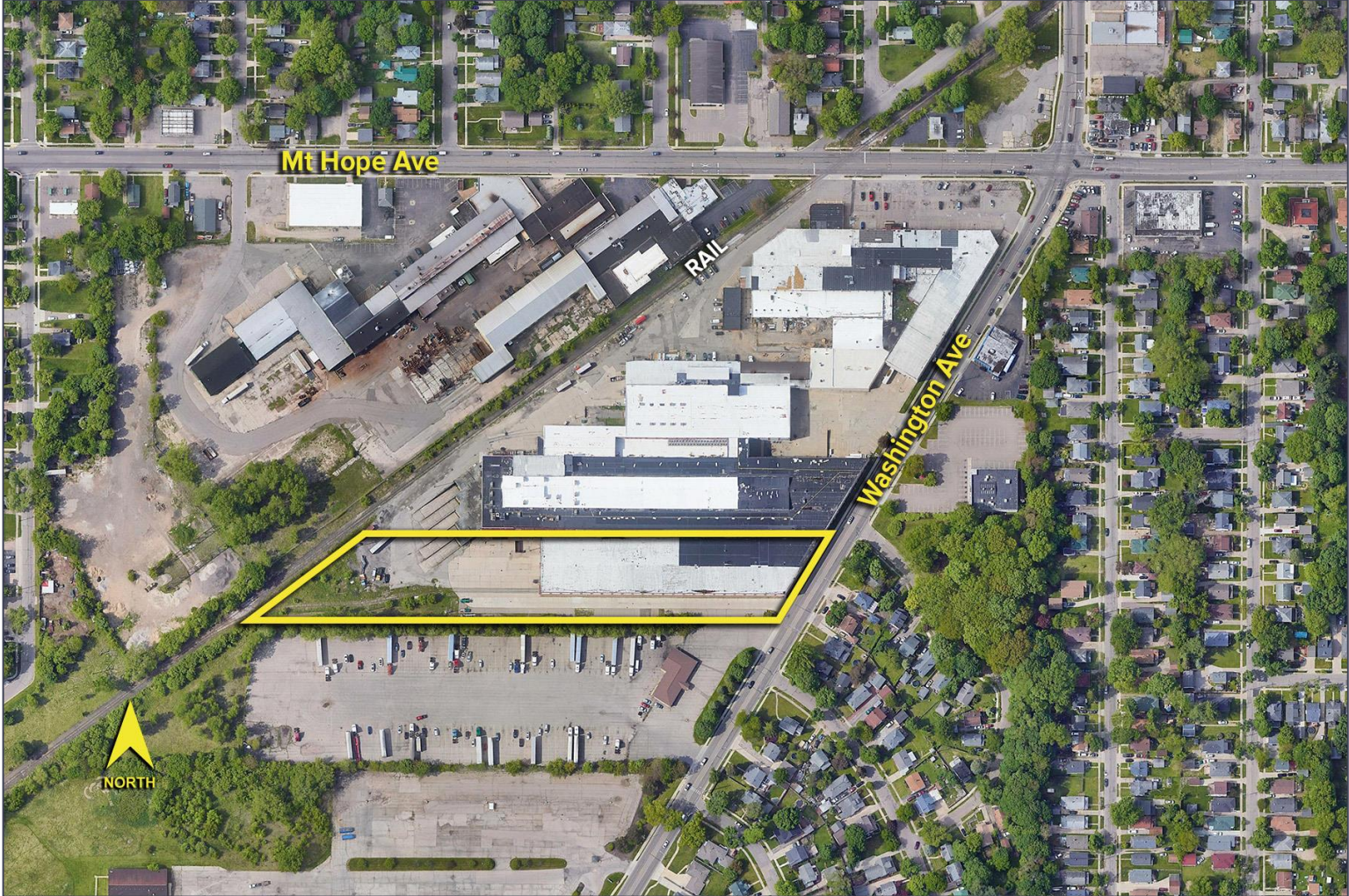
SIGNATURE ASSOCIATES
One Towne Square, Suite 1200
Southfield, MI 48076
www.signatureassociates.com

2120 S. Washington Avenue – Lansing, Michigan

Industrial For Lease

5,000 - 114,037
Square Feet
AVAILABLE

Aerial



For more information, please contact:

KRIS PAWLOWSKI
(248) 359 3801
kpawlowski@signatureassociates.com

GARY STEPHENS
(248) 948 0104
gstephens@signatureassociates.com

SIGNATURE ASSOCIATES
One Towne Square, Suite 1200
Southfield, MI 48076
www.signatureassociates.com

Information is subject to verification and no liability for errors or omissions is assumed. Price is subject to change and listing withdrawal.