

New Price



Sale or Lease

# 3155 Northwoods Place

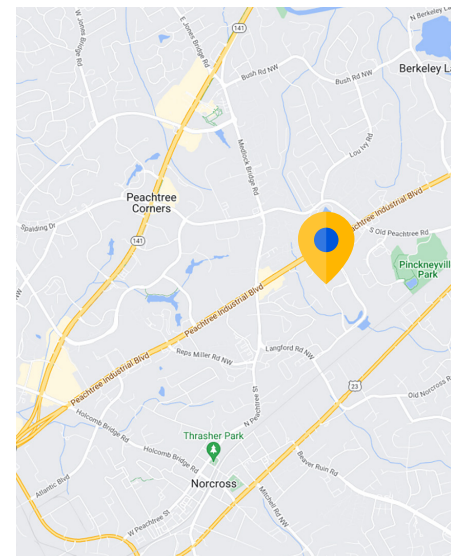
## Peachtree Corners, GA 30071

### Overview

<b>Building:</b>	3155 Northwoods Place Peachtree Corners, GA 30071
<b>Premises:</b>	13,727 SF
<b>Property Size:</b>	1.36 Acres
<b>Sale Price:</b>	Contact for Rate
<b>Rental Rate:</b>	Contact for Rate
<b>Building Class:</b>	Class C Office
<b>Parking:</b>	2.20/1,000 SF
<b>Zoning:</b>	AA030
<b>Parcel No.:</b>	6-271-026

### Building Features

- Loading Dock
- Generator
- Excess HVAC
- Lab Space



### For more information:



**Brooks Morris**  
424.400.9554 mobile  
bmorris@cresa.com



**Tom Tindall**  
678.576.4509 mobile  
ttindall@cresa.com



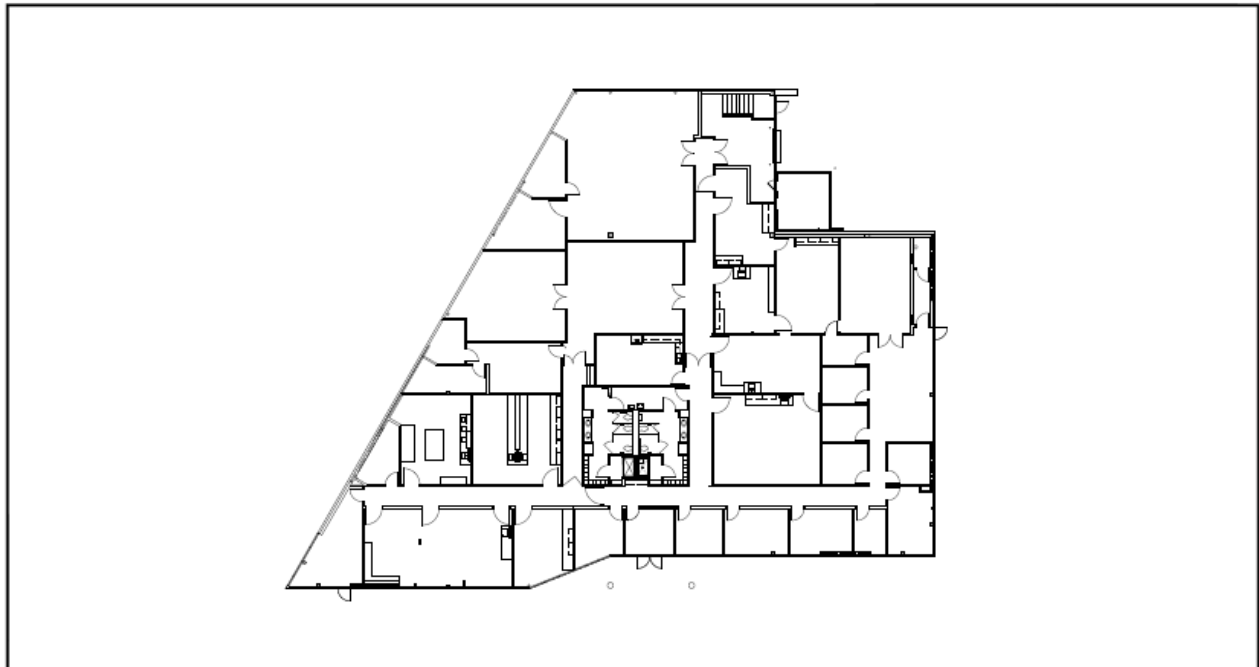
**Peter York**  
404.938.5299 mobile  
pyork@cresa.com



**Brady Tindall**  
404.797.0262 mobile  
btindall@cresa.com

# 3155 Northwoods Place

Peachtree Corners, GA 3071



PROJECT

**3155 Northwoods Place  
Peachtree Corners, GEORGIA**

DATE: NOVEMBER 18, 2024

JOB NUMBER: \_\_\_\_\_

SHEET TITLE: AS BUILT

DRAWING SCALE: NTS

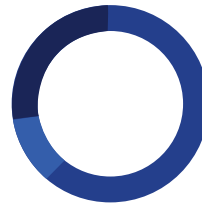
SQUARE FOOTAGE: \_\_\_\_\_

# Market Overview

Peachtree Corners, GA 3071

5 Year Population Growth Rate	4.61%
Labor Force	626,626
Total Unemployment	26,716
Unemployment Rate	4.29%
Average Commute Time	35 Min
Cost of Living Index	95.9
Average Home Price	\$532,174
Average Monthly Rental - 1 Bedroom	\$1,334

## Educational Attainment

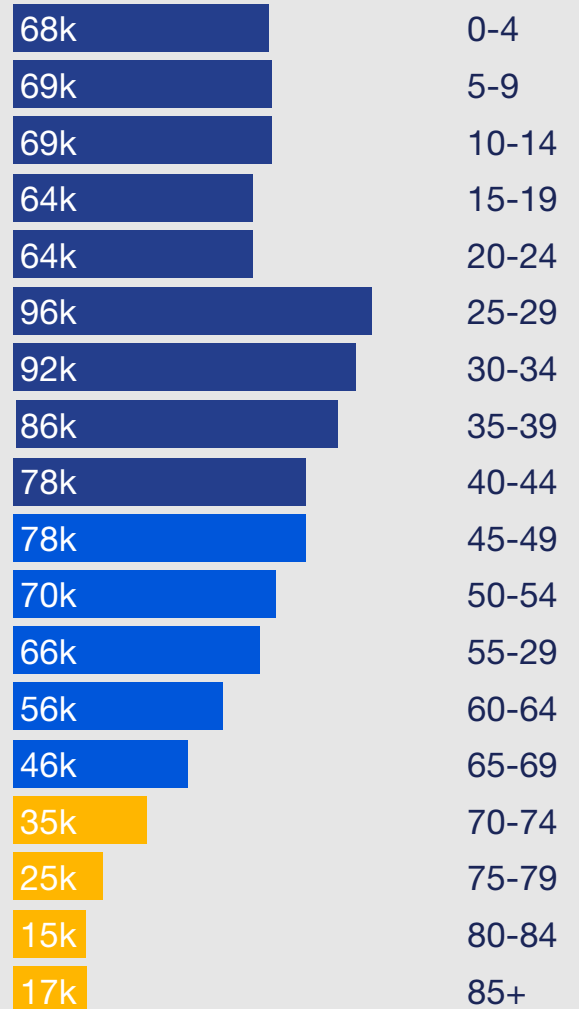


Bachelors/Grad	61.31%
Some College	11.22%
High School	27.46%

## Market Age Distribution

Aging Labor Ratio 1.18

Median Age 37.13



## Traffic Count

Peachtree Industrial Blvd / Corners North Ct SW

