

1453 S Martin Luther King Jr. Ave, Clearwater, FL 33756

# For Sale

Asking Price: \$2,499,000



## Property Highlights

- Asking Price: \$2,499,000
- Size: ±11,000 SF comprised of ±5,000 SF of Warehouse/Office and ±6,000 SF of Self Storage.
- Excellent opportunity for an owner-user to offset operating costs by renting out the Self Storage units.
- Major renovations completed in 2026.
- Property will be delivered vacant at closing, ready for an owner-user or investor.
- One of a kind location near Downtown Clearwater, FL and minutes from Clearwater Beach, home to America's #1 Beach.
- Additional details can be found in the Offering Memorandum.
- To book a private tour, please contact Alex Lucke, CCIM.

Warehouse/Office | Self Storage | For Sale | Clearwater, FL

### ALEX LUCKE, CCIM

Commercial Director

(727) 410-2896

AlexLucke@KWCommercial.com

#SL3351552

# Table of Contents



## 01 - Property Information

Disclaimer .....	4
Executive Summary .....	5
Storage Unit Layout   Projected Revenue .....	6
Renovations & Capital Improvements .....	7
Property Photos .....	8

## 02 - Location Information

Regional Map .....	13
Location Maps .....	14

## 03 - Agent Profile

Professional Bio .....	16
------------------------	----

### Disclaimer

All materials and information received or derived from KW Commercial its directors, officers, agents, advisors, affiliates and/or any third party sources are provided without representation or warranty as to completeness, veracity, or accuracy, condition of the property, compliance or lack of compliance with applicable governmental requirements, developability or suitability, financial performance of the property, projected financial performance of the property for any party's intended use or any and all other matters.

Neither KW Commercial its directors, officers, agents, advisors, or affiliates makes any representation or warranty, express or implied, as to accuracy or completeness of the materials or information provided, derived, or received. Materials and information from any source, whether written or verbal, that may be furnished for review are not a substitute for a party's active conduct of its own due diligence to determine these and other matters of significance to such party. KW Commercial will not investigate or verify any such matters or conduct due diligence for a party unless otherwise agreed in writing.

EACH PARTY SHALL CONDUCT ITS OWN INDEPENDENT INVESTIGATION AND DUE DILIGENCE.

Any party contemplating or under contract or in escrow for a transaction is urged to verify all information and to conduct their own inspections and investigations including through appropriate third-party independent professionals selected by such party. All financial data should be verified by the party including by obtaining and reading applicable documents and reports and consulting appropriate independent professionals. KW Commercial makes no warranties and/or representations regarding the veracity, completeness, or relevance of any financial data or assumptions. KW Commercial does not serve as a financial advisor to any party regarding any proposed transaction.

All data and assumptions regarding financial performance, including those used for financial modeling purposes, may differ from actual data or performance. Any estimates of market rents and/or projected rents that may be provided do not necessarily mean that rents can be established at or increased to that level. Parties must evaluate any applicable contractual and governmental limitations as well as market conditions, vacancy factors and other issues in order to determine rents from or for the property. Legal questions should be discussed by the party with an attorney. Tax questions should be discussed by the party with a certified public accountant or tax attorney. Title questions should be discussed by the party with a title officer or attorney. Questions regarding the condition of the property and whether the property complies with applicable governmental requirements should be discussed by the party with appropriate engineers, architects, contractors, other consultants, and governmental agencies. All properties and services are marketed by KW Commercial in compliance with all applicable fair housing and equal opportunity laws.

A detailed architectural wireframe of a multi-story building, showing the structural elements like columns, beams, and floor slabs. The drawing is in a light gray color and occupies the right side of the page, extending from the top to the bottom. It features a complex grid of lines representing the building's framework.

# 01

# Property Information

DISCLAIMER

EXECUTIVE SUMMARY

STORAGE UNIT LAYOUT | PROJECTED REVENUE

RENOVATIONS & CAPITAL IMPROVEMENTS

PROPERTY PHOTOS

# Disclaimer



All materials and information received or derived from KW Commercial its directors, officers, agents, advisors, affiliates and/or any third party sources are provided without representation or warranty as to completeness, veracity, or accuracy, condition of the property, compliance or lack of compliance with applicable governmental requirements, developability or suitability, financial performance of the property, projected financial performance of the property for any party's intended use or any and all other matters.

Neither KW Commercial its directors, officers, agents, advisors, or affiliates makes any representation or warranty, express or implied, as to accuracy or completeness of the materials or information provided, derived, or received. Materials and information from any source, whether written or verbal, that may be furnished for review are not a substitute for a party's active conduct of its own due diligence to determine these and other matters of significance to such party. KW Commercial will not investigate or verify any such matters or conduct due diligence for a party unless otherwise agreed in writing.

EACH PARTY SHALL CONDUCT ITS OWN INDEPENDENT INVESTIGATION AND DUE DILIGENCE.

Any party contemplating or under contract or in escrow for a transaction is urged to verify all information and to conduct their own inspections and investigations including through appropriate third-party independent professionals selected by such party. All financial data should be verified by the party including by obtaining and reading applicable documents and reports and consulting appropriate independent professionals. KW Commercial makes no warranties and/or representations regarding the veracity, completeness, or relevance of any financial data or assumptions. KW Commercial does not serve as a financial advisor to any party regarding any proposed transaction.

All data and assumptions regarding financial performance, including that used for financial modeling purposes, may differ from actual data or performance. Any estimates of market rents and/or projected rents that may be provided to a party do not necessarily mean that rents can be established at or increased to that level. Parties must evaluate any applicable contractual and governmental limitations as well as market conditions, vacancy factors and other issues in order to determine rents from or for the property. Legal questions should be discussed by the party with an attorney. Tax questions should be discussed by the party with a certified public accountant or tax attorney. Title questions should be discussed by the party with a title officer or attorney. Questions regarding the condition of the property and whether the property complies with applicable governmental requirements should be discussed by the party with appropriate engineers, architects, contractors, other consultants, and governmental agencies. All properties and services are marketed by KW Commercial in compliance with all applicable fair housing and equal opportunity laws.

Exclusively Listed by

**Alex Lucke, CCIM - Commercial Director**

☎ (727) 410-2896

✉ AlexLucke@KWCommercial.com

📱 #SL3351552

The calculations and data presented are deemed to be accurate, but not guaranteed. They are intended for the purpose of illustrative projections and analysis. The information provided is not intended to replace or serve as substitute for any legal, accounting, investment, real estate, tax or other professional advice, consultation or service. The user of this software should consult with a professional in the respective legal, accounting, tax or other professional area before

# Executive Summary



## Property Overview

KW Commercial Tampa Properties is proud to represent for sale 1453 S. Martin Luther King Jr. Avenue in Clearwater, Florida. Situated on  $\pm 0.71$  acres, the property includes approximately  $\pm 11,000$  SF across three buildings with a functional mix of office, warehouse, and self-storage space. In 2026, the property underwent major renovations and is now a turnkey opportunity for an owner-operator or investor.

The main building includes approximately  $\pm 5,000$  SF, comprised of approximately  $\pm 2,400$  SF of warehouse space and approximately  $\pm 2,600$  SF of renovated two-story office space. The warehouse features 18-foot clear heights, a 12' x 10' grade-level door, epoxy floors, upgraded electrical, a new insulation liner, and skylights. The office area includes a reception area, five private offices, four to five additional cubicle workstations, an oversized conference room, break room, and multiple access points.

The rear buildings total approximately  $\pm 6,000$  SF and include 43 self-storage units of varying sizes, providing additional storage capacity and potential supplemental income for an owner-user or investor.

The site is fully fenced and secured with a new electronic gate system, updated security, freshly paved and striped parking, and approximately 17+ parking spaces. Recent improvements also include new interior and exterior paint, new storage doors, roof sealing and coating, and extensive site cleanup and landscaping.

The property is ideal for contractors, service businesses, light industrial users, office/warehouse operations, and storage-oriented businesses. Buyers should verify zoning and permitted uses with the City of Clearwater.



<b>Price:</b>	\$2,499,000
<b>Building SF:</b>	$\pm 11,000$ SF
<b>Price / SF:</b>	\$227/ft
<b>Lot Size:</b>	0.71 Acres
<b>Zoning:</b>	Commercial (City of Clearwater)
<b>Grade Level Door:</b>	(1) 12' x 10'
<b>Power:</b>	Single Phase, 240 AMP
<b>Storage Units:</b>	43
<b>Year Renovated:</b>	2026
<b>Year Built:</b>	1986
<b>APN:</b>	22-29-15-22986-000-0100
<b>Parking:</b>	17 Spaces

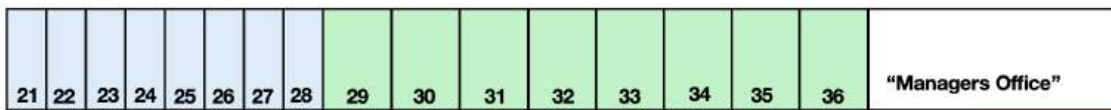
# Storage Unit Layout | Projected Revenue



## Income Potential

- Opportunity for an owner-operator to offset operating expenses through lease-up of the (43) on-site self-storage units.
- Storage component has been repositioned with brand-new roll-up doors and is ready for market lease-up.
- Existing "Storable.com" software platform may be transferable, offering a turnkey self-storage management system for reservations, billing, operations, and customer oversight.
- "Sagamore Exchange" branding and current website may also be transferable, providing a new owner with an established operating and marketing platform.
- <https://www.sagamoreexchange.com/>

[-----5' x 10'-----] [-----10' x 10'-----] [--15' x 10'--]



[15' x 12'] [-----10' x 12'-----] [15' x 12']



[15' x 12'] [-----10' x 12'-----] [15' x 12']



[-----10' x 20'-----]

(\*This is a proforma assuming 100% occupancy)

Units	#	Rate (Monthly + Tax)	Total Monthly	Total Annually
5 x 10	8	\$ 75.00	\$ 600.00	\$ 7,200.00
10 x 10	8	\$ 125.00	\$ 1,000.00	\$ 12,000.00
10 x 12	16	\$ 135.00	\$ 2,160.00	\$ 25,920.00
10 x 15	1 (Office)	\$ 150.00	\$ 150.00	\$ 1,800.00
12 x 15	4	\$ 175.00	\$ 700.00	\$ 8,400.00
20 x 10	7	\$ 195.00	\$ 1,365.00	\$ 16,380.00
	43		\$ 5,975.00	\$ 71,700.00



# Renovations & Capital Improvements



## Completed in 2026

- Roof professionally sealed and coated with Lanco White Seal elastomeric roof system for long-term protection and durability
- New epoxy flooring installed throughout warehouse space
- New insulation liner installed in warehouse building with sky lights
- New electric hot water tank installed in 2026
- New storage doors installed on all 43 self-storage units in 2026
- New exterior and interior paint throughout property in 2026
- New parking lot paving and striping completed
- New LiftMaster electronic gate operating system installed in 2025
- ADT wireless security system installed in 2025
- HVAC systems serviced and drain lines cleaned
- Extensive site cleanup, tree trimming, shell installation, and landscaping improvements completed
- 220V power restored near dumpster area, allowing future EV charging station capability
- All renovations and improvements completed with permits through the City of Clearwater



# Property Photos



# Property Photos



# Property Photos



# Property Photos



The background of the page is a light gray architectural wireframe of a modern building. The lines are thin and create a complex, multi-layered structure of rectangular forms, suggesting a multi-story building with various levels and setbacks. The perspective is from a low angle, looking up at the building's facade.

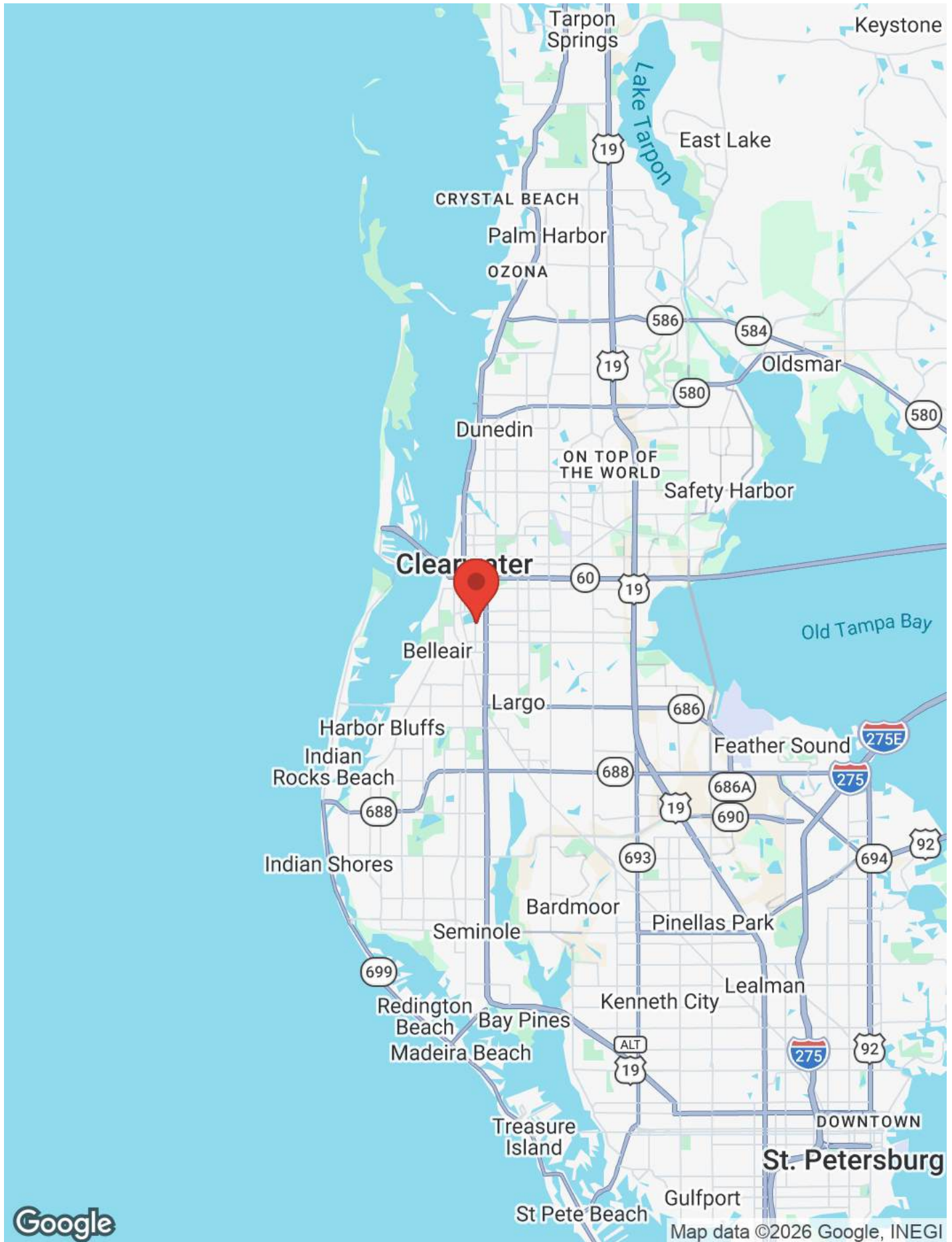
02

# Location Information

REGIONAL MAP

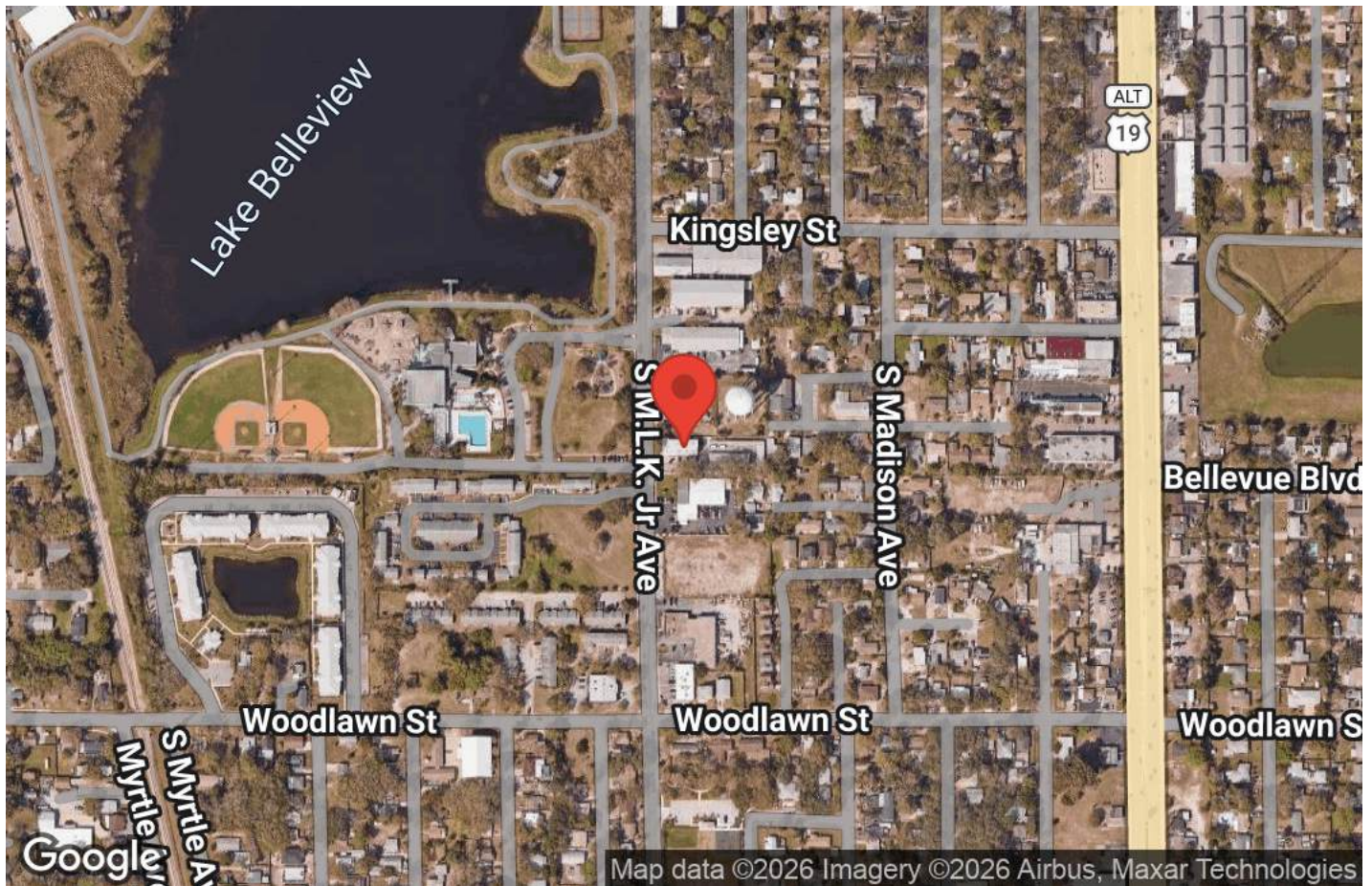
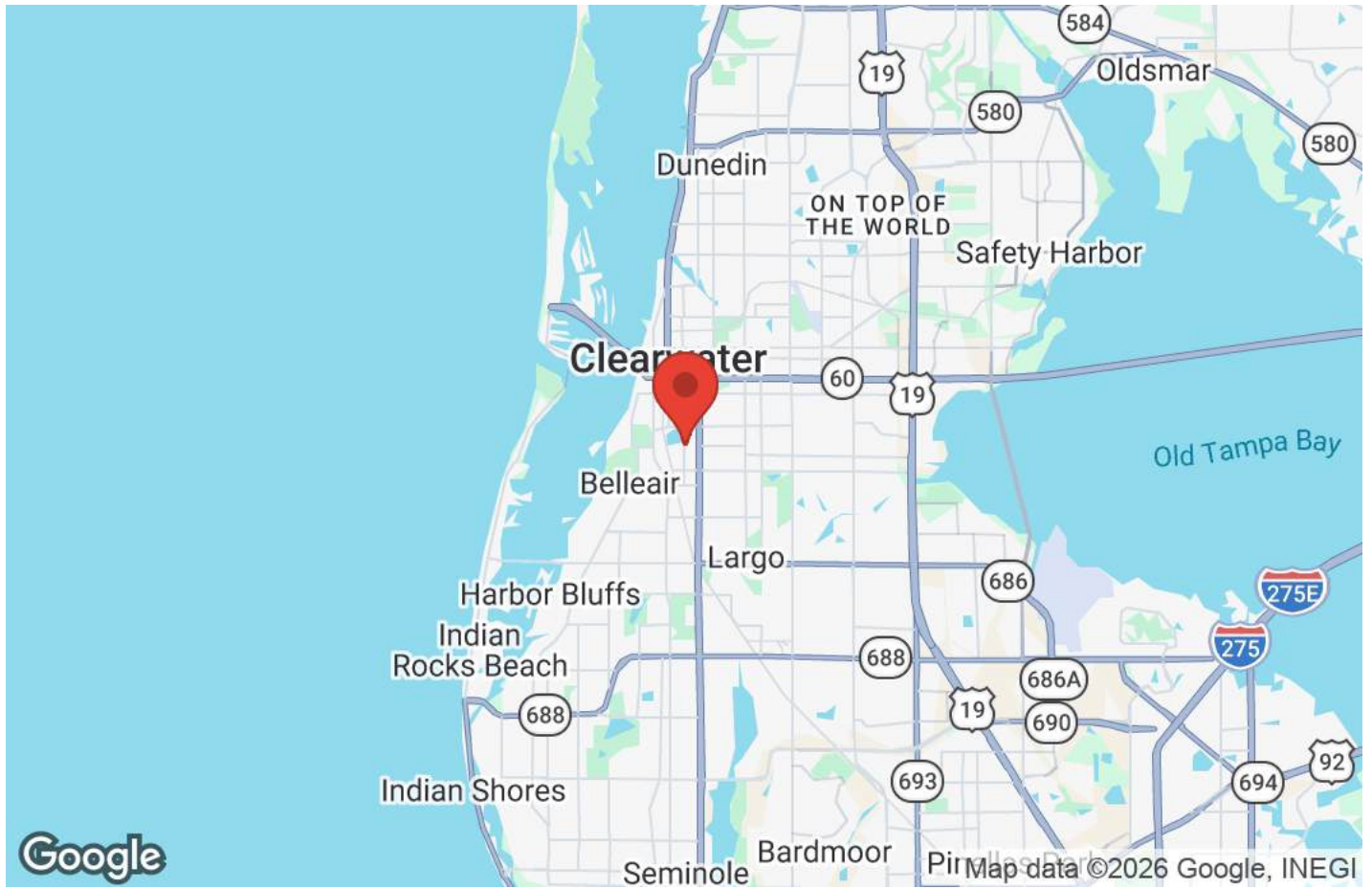
LOCATION MAPS

# Regional Map



Map data ©2026 Google, INEGI

# Location Maps



The background of the page is a light gray architectural wireframe of a modern building. It features multiple levels, balconies, and rectangular window openings, all rendered as thin lines. Dotted lines are used to indicate vertical and horizontal alignments across the structure.

03

# Agent Profile

PROFESSIONAL BIO

# Professional Bio



## ALEX LUCKE, CCIM

Commercial Director

AlexLucke@KWCommercial.com

**Direct:** (727) 410-2896 | **Cell:** (727) 410-2896

#SL3351552

Alex Lucke is a dedicated commercial real estate broker based in Tampa, Florida. He's been actively helping clients buy, sell, and lease commercial properties since 2015. As a Commercial Director at KW Commercial and a Certified Commercial Investment Member (CCIM), Alex brings deep market knowledge and personalized service to every deal.

With a focus on Industrial, Office, Retail, Multifamily, Land Development, and Special Purpose properties, he works with business owners and investors to make smart, strategic real estate decisions. His approach is simple: clear communication, tailored advice, and results that make sense.

What sets Alex apart is his responsiveness and reliability. He picks up the phone, engages on his clients' schedules, and moves quickly when it matters most. He's also a skilled marketer who takes pride in representing some of the most sought-after listings in Florida. Known for identifying market trends early, Alex adapts fast delivering proactive strategies and exceptional client service.

In 2020, Alex earned his CCIM designation, an elite credential held by fewer than 10% of commercial brokers nationwide. Over the years, he's worked with a wide range of clients, including FASTSIGNS, Yo Mama's Food Co., Rose Radiology, Piazza Natural Stone, AVC Technologies, SiteOne Landscape Supply, INSA, Kelli's Catering & Events, and many local small businesses.

He maintains membership in several professional organizations, including FGCAR, GTAR, NAR, and CCIM.

Outside of work, Alex enjoys golfing, traveling, and cheering on the Tampa Bay Lightning with his wife Jacqueline, a podiatric surgeon. Both proud graduates of the University of Florida, they share a love for good food, family, and new places.

**KW Commercial Tampa Properties**

5020 W Linebaugh Ave #100

Tampa, FL 33624

(727) 410-2896