



OFFICE SPACE FOR LEASE | OAK RESERVE

665 West Warren Avenue, Longwood, FL 32750

AVAILABLE JANUARY 1, 2026
In the Heart of Longwood - Prime
Medical and/or Office Locations

PROPERTY HIGHLIGHTS

- Well maintained, single-user building.
- Proximity to Longwood’s downtown corridor including City Hall, Farmer’s Market, Reiter Park, and SunRail Station.
- **Walking distance of Orlando Health’s re-imagined, new state-of-the-art Healthcare Hub and planned site redevelopment.**
- Minutes from W SR-434, Interstate 4, & Ronald Reagan Blvd.
- Gated and secured after hours
- Monument signage opportunity



ASKING RATE:
Call for Details



SQUARE FOOTAGE:
4,000± SF (2 stories)



ZONING:
Neighborhood Commercial



PARKING:
Ample surface parking



FURNISHED:
Available fully furnished



HARBERT
REALTY SERVICES

DAMIEN MADSEN
dmadsen@harbertrealty.com | 407.256.2844

JOSH SMITH
jsmith@harbertrealty.com | 407.377.4050

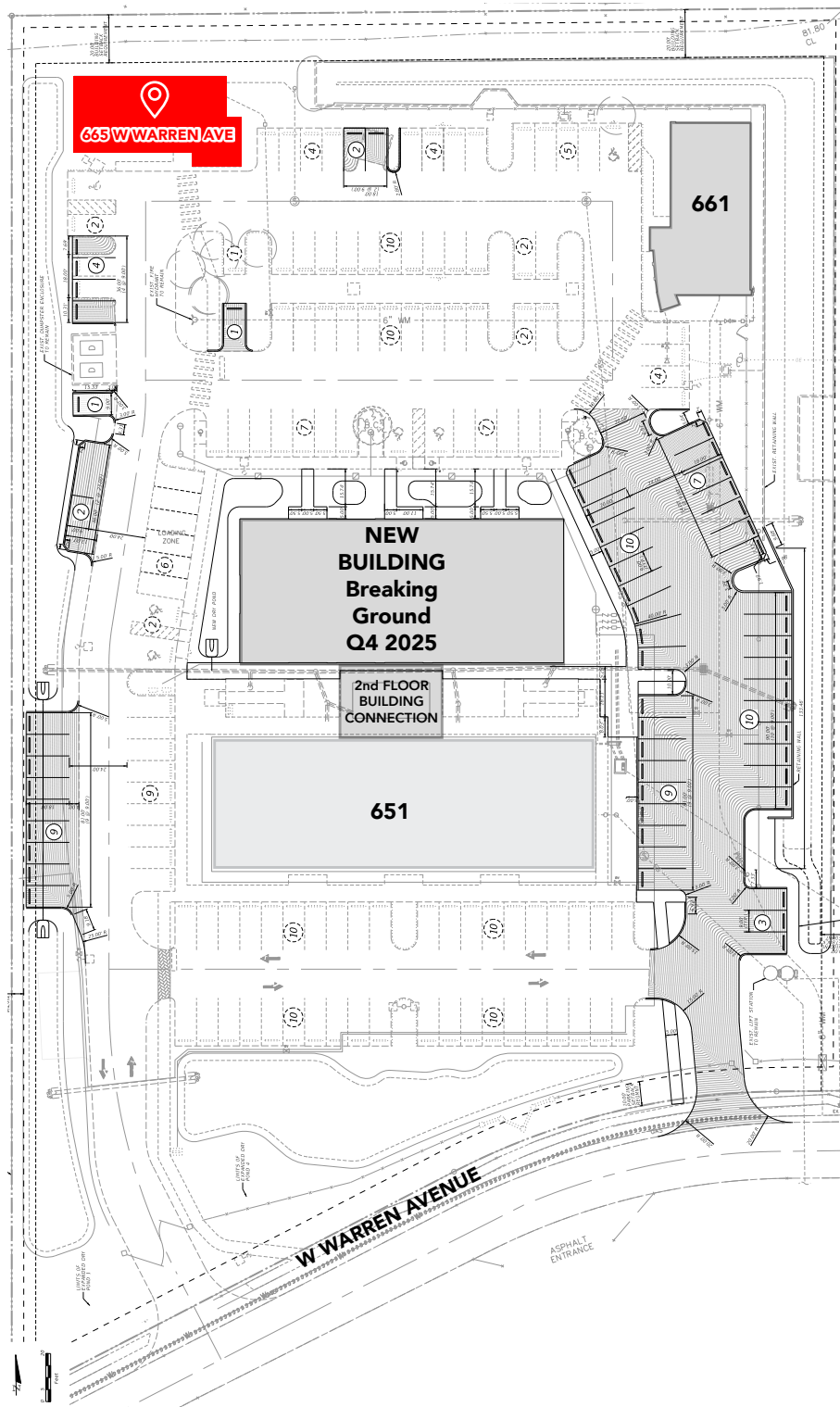
For More Information: HarbertRealty.com
400 S Park Ave, Suite 225, Winter Park, FL 32789

The information contained herein has been obtained from sources deemed reliable, however, HRS makes no guarantees, warranties or representation as to its completeness or accuracy thereof. The presentation of this property is submitted subject to errors, omissions, change of price or conditions, prior to sale or lease or withdrawal without notice

OFFICE SPACE FOR LEASE | OAK RESERVE

665 West Warren Avenue, Longwood, FL 32750

SITE PLAN



HARBERT
REALTY SERVICES

DAMIEN MADSEN

dmadsen@harbertrealty.com | 407.256.2844

JOSH SMITH

jsmith@harbertrealty.com | 407.377.4050

For More Information: [HarbertRealty.com](https://www.HarbertRealty.com)

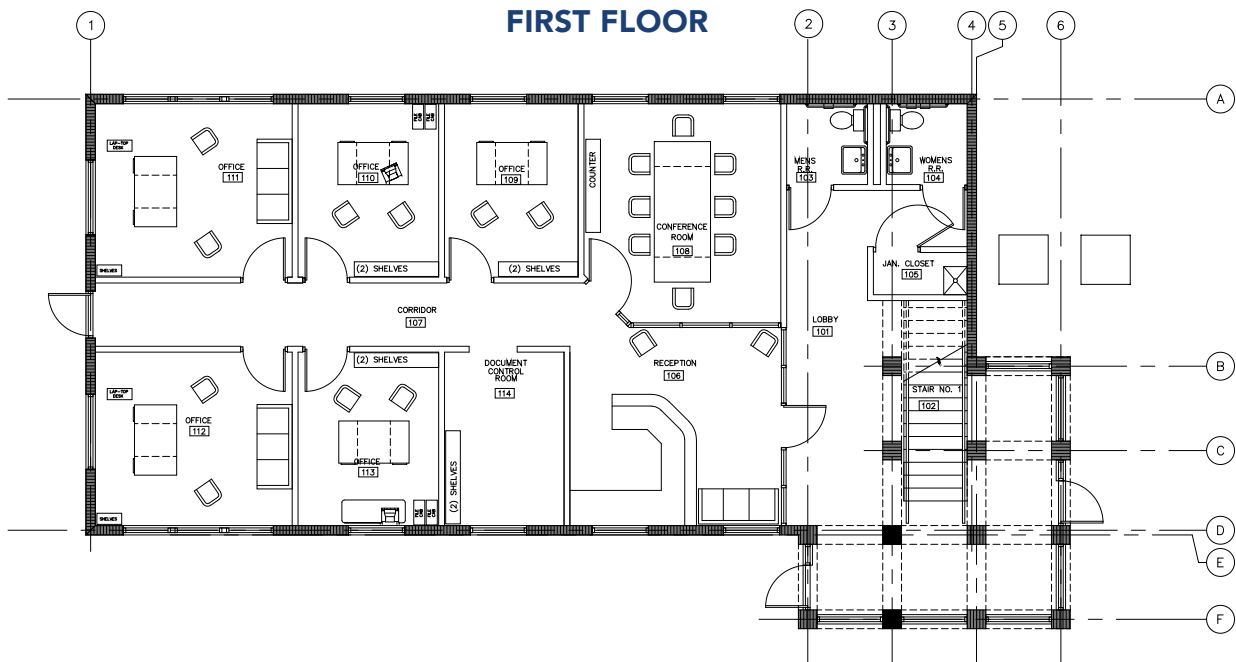
400 S Park Ave, Suite 225, Winter Park, FL 32789

OFFICE SPACE FOR LEASE | OAK RESERVE

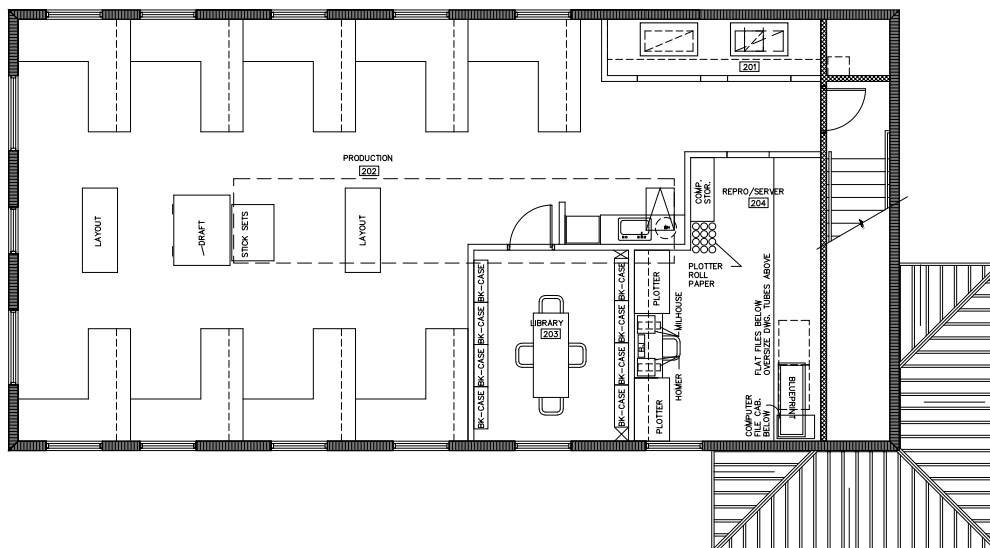
665 West Warren Avenue, Longwood, FL 32750

BUILDING PLAN

BUILDING TOTAL:
4,000± SF
(2,000± SF ON EACH FLOOR)



SECOND FLOOR



HARBERT
REALTY SERVICES

DAMIEN MADSEN

dmadsen@harbertrealty.com | 407.256.2844

JOSH SMITH

jsmith@harbertrealty.com | 407.377.4050

For More Information: HarbertRealty.com

400 S Park Ave, Suite 225, Winter Park, FL 32789

OFFICE SPACE FOR LEASE | OAK RESERVE

665 West Warren Avenue, Longwood, FL 32750

AREA OVERVIEW



DRIVE TIMES

7 minutes

to Interstate 4

30 minutes

to Orlando Executive Airport

35 minutes

to Orlando International Airport (MCO)

DEMOGRAPHICS

Distance	1 Mile	3 Miles	5 Miles
Employees	12,755	56,539	127,488
Avg HH Income	\$107,909	\$105,684	\$116,345
Businesses	1,432	7,583	18,311



DAMIEN MADSEN

dmadsen@harbertrealty.com | 407.256.2844

JOSH SMITH

jsmith@harbertrealty.com | 407.377.4050

For More Information: HarbertRealty.com

400 S Park Ave, Suite 225, Winter Park, FL 32789