



The Design Center

3445 Winton Place
Rochester, NY 14623

Space Available: Up To 10,536 SF

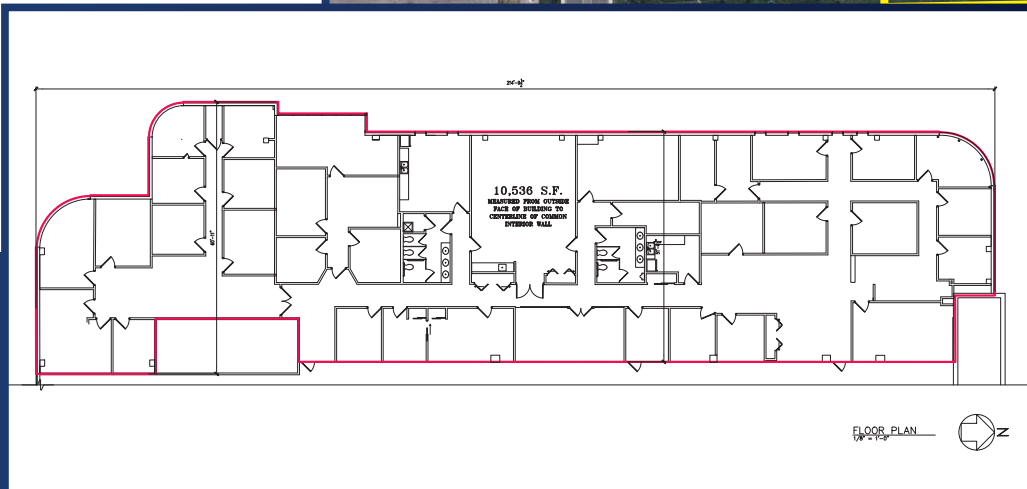
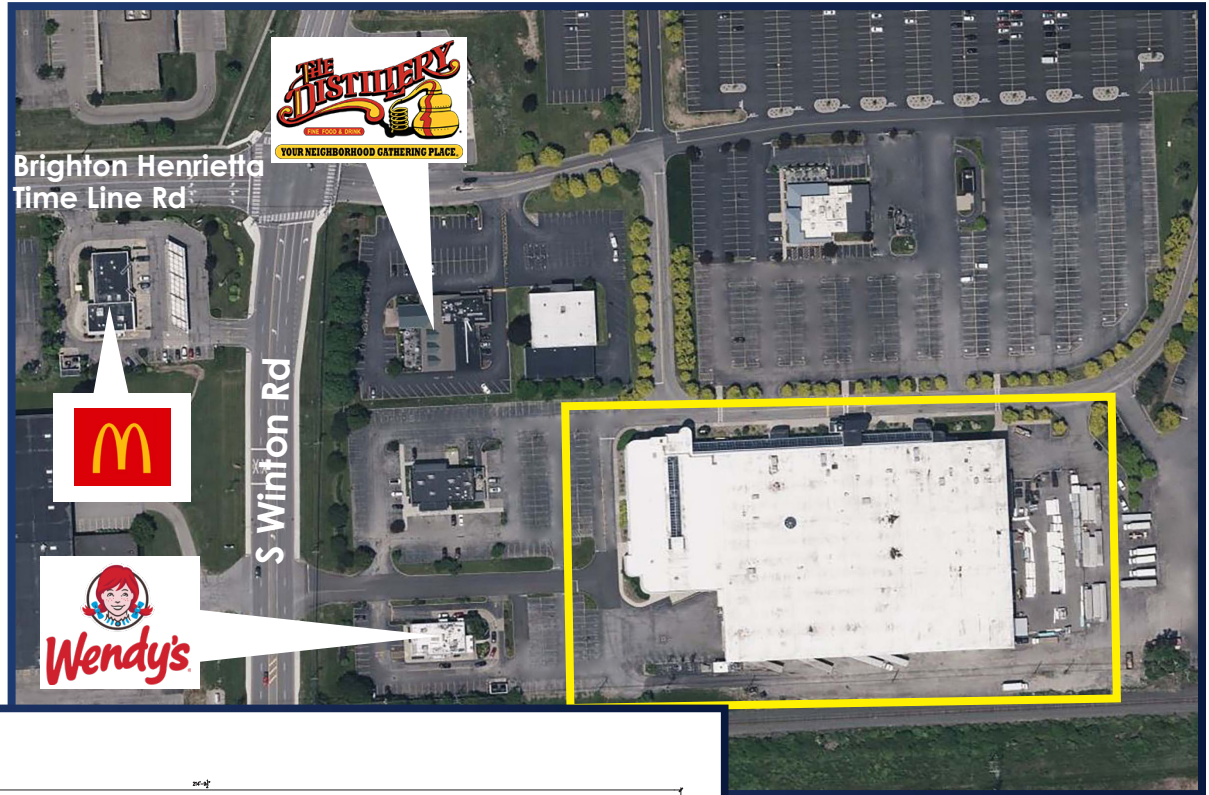
- » Ideal for Industrial Space or Showroom
- » Two Story Upscle Office Building
- » Ample Glass Walls and Skylights
- » Adjacent to Trio Grill, The Distillery, Wendy's, and Many Other Businesses

The Design Center is a sleek, upscale two-story office building. There are three retail users and the remainder if offices. The building has tons for glass walls and skylights to bring in all natural light. This is a fast growing corridor, close to I-390 and I-590 and has easy access at the corner of Winton and Brighton Henrietta Townline Rd.



Real Estate *it's in our blood!*
www.flaummgt.com

Contact Us: 400 Andrews Street #500 | Rochester, NY 14604 | 585.546.4866



Let our experienced professionals help you today. With decades of experience, our team brings a wealth of knowledge in real estate, brokerage, and project management.

Real Estate *it's in our blood!*
www.flaummgmt.com