

# FOR LEASE

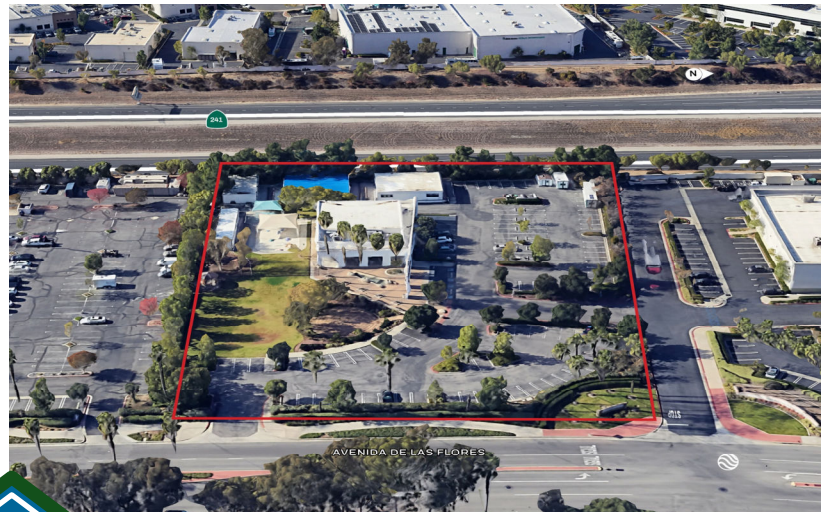
## 4,864 SF RELIGIOUS FACILITY ON 2.4 ACRES



**30605 Avenida de las Flores**  
Rancho Santa Margarita, CA 92688

### OPPORTUNITY OVERVIEW

A 4,868 S.F. shared use religious facility opportunity is available in Rancho Santa Margarita, California. This beautiful church sits on 2.4 acres and includes a 4,868 SF sanctuary with a fully operational kitchen. The property is complete with plenty of walking areas, ample parking, playground area and three (3) bonus modular buildings. Located near retail and restaurants, this unique property has great access to Santa Margarita Parkway and the 241 Tollway. The surrounding properties include the Santa Margarita Marketplace and medium-density residential.



**Listing  
Agents**

**Brian Childs**  
Executive Managing Director  
949.468.2309  
[bchilds@naicapital.com](mailto:bchilds@naicapital.com)  
CA BRE Lic. #00893394

**David Knowlton SIOR, CCIM**  
Executive Vice President  
949.468.2307  
[dknowlton@naicapital.com](mailto:dknowlton@naicapital.com)  
CA BRE Lic. #00893394

**NAI Capital**  
COMMERCIAL REAL ESTATE SERVICES, WORLDWIDE

No warranty, express or implied, is made as to the accuracy of the information contained herein. This information is submitted subject to errors, omissions, change of price, rental or other conditions, withdrawal without notice, and is subject to any special listing conditions imposed by our principals. Cooperating brokers, buyers, tenants and other parties who receive this document should not rely on it, but should use it as a starting point of analysis, and should independently confirm the accuracy of the information contained herein through a due diligence review of the books, records, files and documents that constitute reliable sources of the information described herein. Logos are for identification purposes only and may be trademarks of their respective companies. NAI Capital, Inc. CA DRE Lic. #02130474.



# FOR LEASE

4,864 SF RELIGIOUS FACILITY ON 2.4 ACRES

## 30605 Avenida de las Flores

Rancho Santa Margarita, CA 92688

### PROPERTY HIGHLIGHTS

- 4,868 SF Religious Facility on 2.4 Acres (Shared Use Space)
- Foyer, Large Sanctuary, Kitchen, Two Restrooms
- Outside Playground, Fellowship Plaza, Meditation Garden
- Three (3) Bonus Modular Buildings
- 121 Parking Spaces
- Est. HH Avg. Income: \$196,103 (3-Mile Radius)
- Less Than One Mile to 241 Tollway/Santa Margarita Parkway Interchange



Listing  
Agents

**Brian Childs**  
Executive Managing Director  
949.468.2309  
[bchilds@naicapital.com](mailto:bchilds@naicapital.com)  
CA BRE Lic. #00893394

**David Knowlton SIOR, CCIM**  
Executive Vice President  
949.468.2307  
[dknowlton@naicapital.com](mailto:dknowlton@naicapital.com)  
CA BRE Lic. #00893394

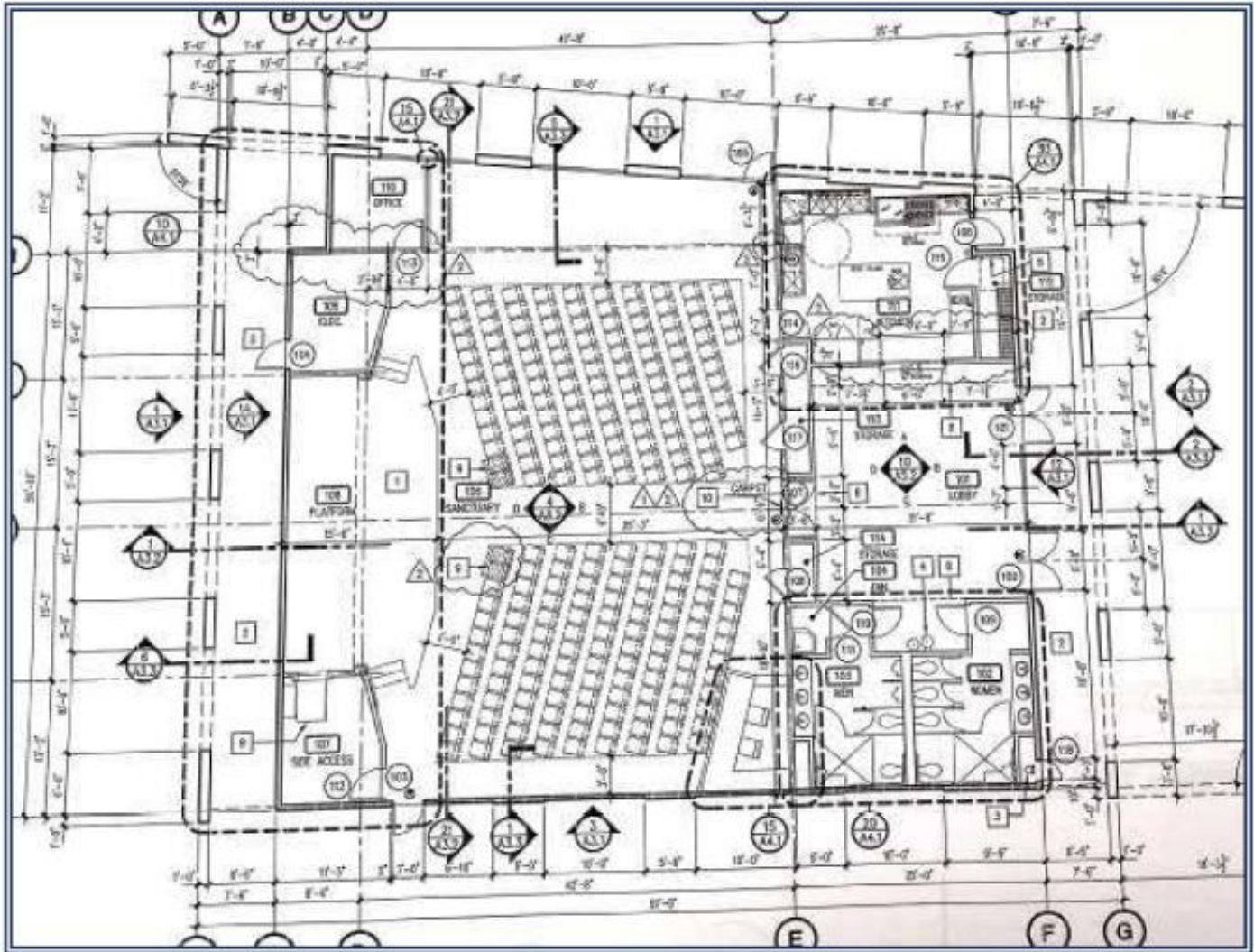
**NAI Capital**  
COMMERCIAL REAL ESTATE SERVICES, WORLDWIDE

No warranty, express or implied, is made as to the accuracy of the information contained herein. This information is submitted subject to errors, omissions, change of price, rental or other conditions, withdrawal without notice, and is subject to any special listing conditions imposed by our principals. Cooperating brokers, buyers, tenants and other parties who receive this document should not rely on it, but should use it as a starting point of analysis, and should independently confirm the accuracy of the information contained herein through a due diligence review of the books, records, files and documents that constitute reliable sources of the information described herein. Logos are for identification purposes only and may be trademarks of their respective companies. NAI Capital, Inc. CA DRE Lic. #02130474.



## 4,864 SF RELIGIOUS FACILITY ON 2.4 ACRES

## FLOOR PLAN



**NAI Capital**  
COMMERCIAL REAL ESTATE SERVICES, WORLDWIDE

No warranty, express or implied, is made as to the accuracy of the information contained herein. This information is submitted subject to errors, omissions, change of price, rental or other conditions, withdrawal without notice, and is subject to any special listing conditions imposed by our principals. Cooperating brokers, buyers, tenants and other parties who receive this document should not rely on it, but should use it as a starting point of analysis, and should independently confirm the accuracy of the information contained herein through a due diligence review of the books, records, files and documents that constitute reliable sources of the information described herein. Logos are for identification purposes only and may be trademarks of their respective companies. NAI Capital, Inc. CA DRE Lic. #02130474.

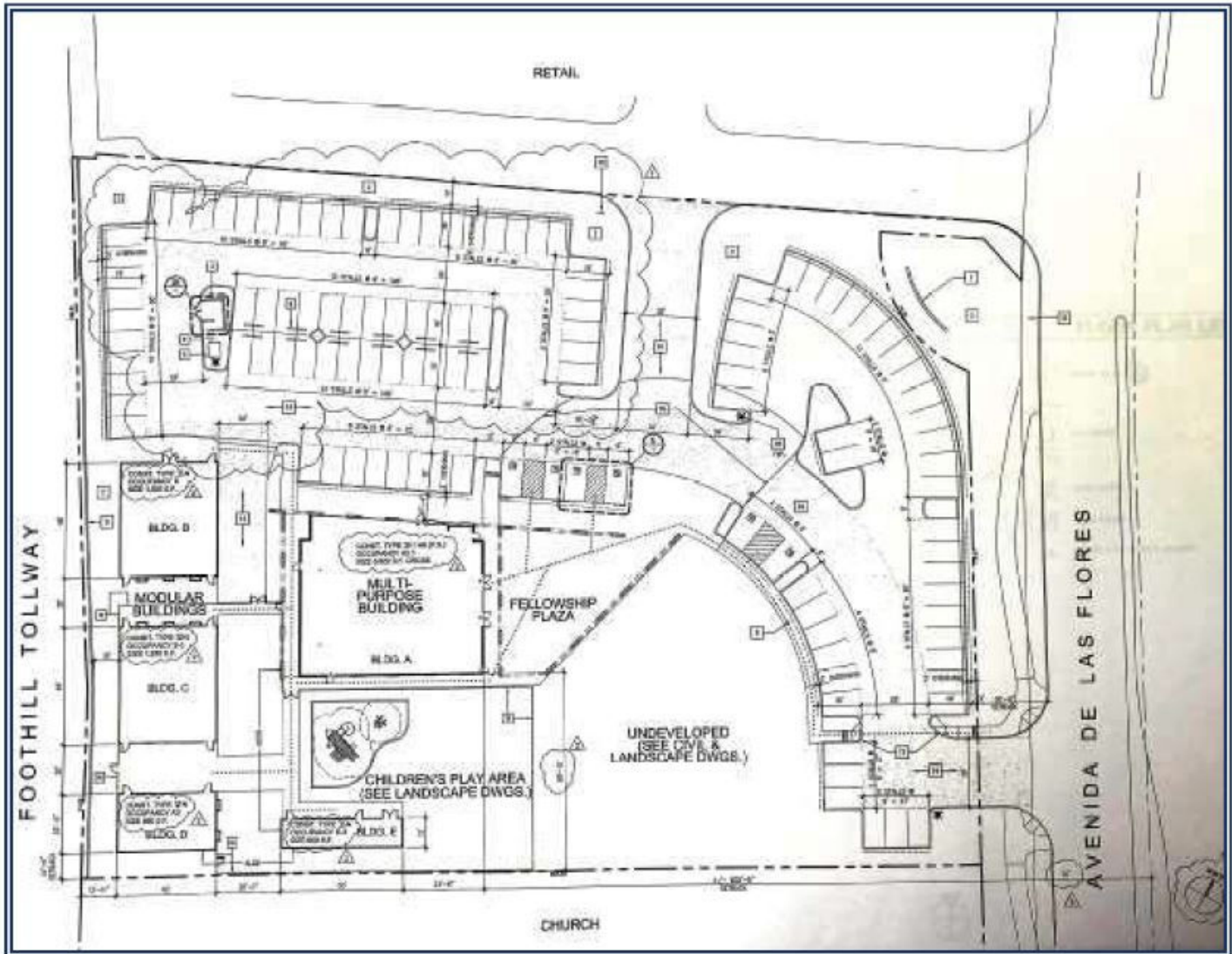
# FOR LEASE

4,864 SF RELIGIOUS FACILITY ON 2.4 ACRES

**30605 Avenida de las Flores**

Rancho Santa Margarita, CA 92688

## SITE PLAN



**Listing  
Agents**

**Brian Childs**  
Executive Managing Director  
949.468.2309  
[bchilds@naicapital.com](mailto:bchilds@naicapital.com)  
CA BRE Lic. #00893394

**David Knowlton SIOR, CCIM**  
Executive Vice President  
949.468.2307  
[dknowlton@naicapital.com](mailto:dknowlton@naicapital.com)  
CA BRE Lic. #00893394

**NAI Capital**  
COMMERCIAL REAL ESTATE SERVICES, WORLDWIDE

No warranty, express or implied, is made as to the accuracy of the information contained herein. This information is submitted subject to errors, omissions, change of price, rental or other conditions, withdrawal without notice, and is subject to any special listing conditions imposed by our principals. Cooperating brokers, buyers, tenants and other parties who receive this document should not rely on it, but should use it as a starting point of analysis, and should independently confirm the accuracy of the information contained herein through a due diligence review of the books, records, files and documents that constitute reliable sources of the information described herein. Logos are for identification purposes only and may be trademarks of their respective companies. NAI Capital, Inc. CA BRE Lic. #02130474.

# FOR LEASE

4,864 SF RELIGIOUS FACILITY ON 2.4 ACRES

## 30605 Avenida de las Flores

Rancho Santa Margarita, CA 92688

### DEMOGRAPHICS



#### Population

	1 Mile	3 Mile	5 Mile
2024 Estimated Population	13,818	80,796	176,146
2029 Projected Population	13,219	77,106	169,023
2020 Census Population	13,985	84,160	182,878
2010 Census Population	14,049	83,097	178,983



#### Income

	1 Mile	3 Mile	5 Mile
2024 Estimated Household Income: Average	\$156,042	\$196,103	\$191,762
2029 Projected Household Income: Average	\$163,417	\$206,492	\$201,588
2024 Estimated Household Income: Median	\$138,382	\$166,893	\$161,079
2029 Projected Household Income: Median	\$140,998	\$174,286	\$167,608



#### Households

	1 Mile	3 Mile	5 Mile
2024 Estimated Households	5,284	30,574	64,437
2024 Average Household Size	3.3	3.3	3.3
2029 Projected Households	5,063	29,284	62,174

Listing  
Agents

**Brian Childs**  
Executive Managing Director  
949.468.2309  
[bchilds@naicapital.com](mailto:bchilds@naicapital.com)  
CA BRE Lic. #00893394

**David Knowlton SIOR, CCIM**  
Executive Vice President  
949.468.2307  
[dknowlton@naicapital.com](mailto:dknowlton@naicapital.com)  
CA BRE Lic. #00893394

**NAI Capital**  
COMMERCIAL REAL ESTATE SERVICES, WORLDWIDE

No warranty, express or implied, is made as to the accuracy of the information contained herein. This information is submitted subject to errors, omissions, change of price, rental or other conditions, withdrawal without notice, and is subject to any special listing conditions imposed by our principals. Cooperating brokers, buyers, tenants and other parties who receive this document should not rely on it, but should use it as a starting point of analysis, and should independently confirm the accuracy of the information contained herein through a due diligence review of the books, records, files and documents that constitute reliable sources of the information described herein. Logos are for identification purposes only and may be trademarks of their respective companies. NAI Capital, Inc. CA DRE Lic. #02130474.