

# Ideal For Residential or Commercial Use...

29059 SHEFFIELD ROAD, HOCKLEY, TEXAS 77447

**BETH WOLFF**  
REALTORS®

Trust Wisely.®



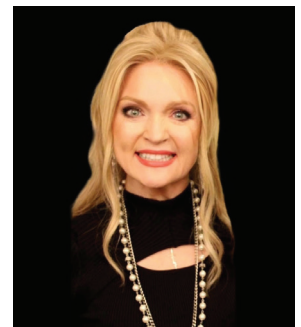
Nestled in a serene area near FM 1488 and Hockley, this ± 50-acre property boasts an abundance of mature trees and natural beauty for further development. The location in Hockley offers close proximity to Magnolia, Waller, and Cypress, making it ideal for those seeking a peaceful lifestyle without sacrificing convenience. Whether you envision a ranch or country home, residential development, or commercial venture, this property presents endless opportunities to make them a reality. There are two structures (a small residence and a storage shed) present on the property to be sold in their current condition. Don't miss out on the opportunity to make this fantastic property your own.

## KEY DETAILS

|                      |   |
|----------------------|---|
| <b>Acreage</b>       | 49.749 acres  |
| <b>Road Frontage</b> | ± 1000' on Sheffield Road   |
| <b>Market Area</b>   | Waller County   |
| <b>Land Use</b>      | Agricultural, Cattle Ranch, Hunting, Leisure Ranch, Mobile Home Allowed, Resort, Timber, Commercial Development |

## FEATURES

Excellent Location  
Endless Potential  
Electricity Available



*Marketed by*

**MARILYN SAVAGE  
MARTINEZ**

713-444-1260

713-622-9339

marilyn@bethwolff.com

**bethwolff.com**



**Elegant Homes™**  
*The luxury property experts™*



**LEARN MORE**

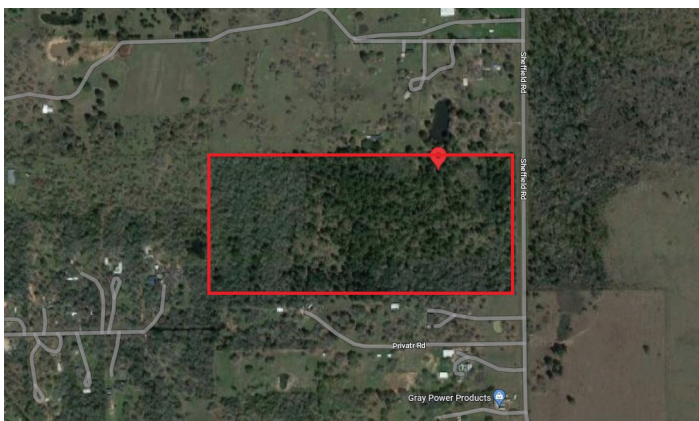


# Prime Development For Commercial or Residential

29059 SHEFFIELD ROAD, HOCKLEY, TEXAS 77447

**BETH WOLFF**  
REALTORS®

Trust Wisely.®



Marketed by: **MARILYN SAVAGE MARTINEZ** | 713-444-1260 | [marilyn@bethwolff.com](mailto:marilyn@bethwolff.com)

