

CITY OF WHITEFISH GENERAL NOTES

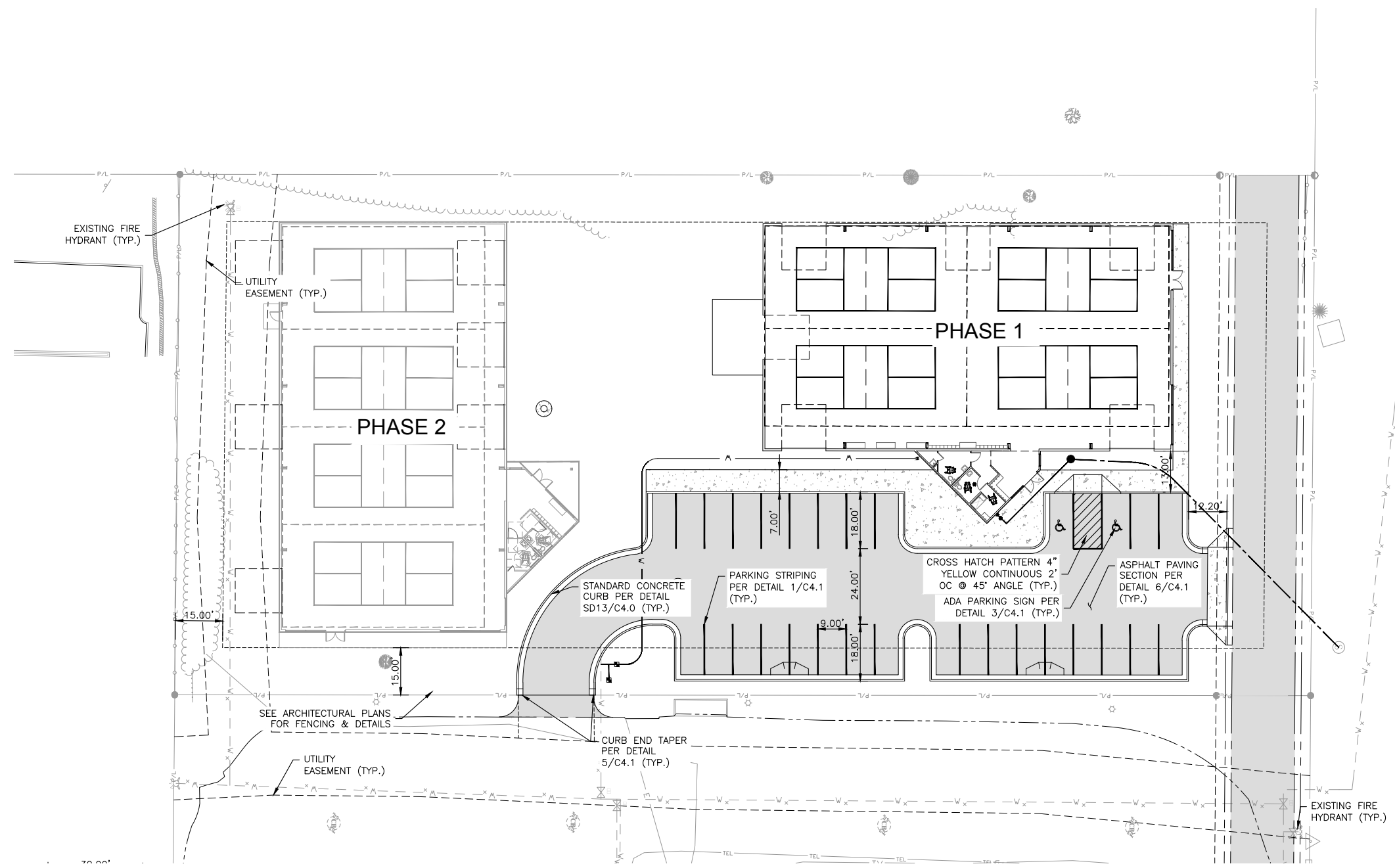
1. ALL WORK SHALL BE PERFORMED IN ACCORDANCE WITH THE "DESIGN AND CONSTRUCTION STANDARDS" OF THE CITY OF WHITEFISH, AND SHALL BE COMPLETED TO THE SATISFACTION OF THE DIRECTOR OF PUBLIC WORKS. IN THE EVENT THAT A DESIGN ELEMENT DOES NOT REFLECT CITY STANDARDS, THE MATTER MUST BE IMMEDIATELY BROUGHT TO THE ATTENTION OF THE ENGINEER AND THE DIRECTOR OF PUBLIC WORKS. THE ENGINEER SHALL BE RESPONSIBLE FOR RECOMMENDING A SOLUTION OR ALTERNATIVE SOLUTIONS TO THE CITY FOR REVIEW AND APPROVAL.
2. THESE PLANS HAVE BEEN CHECKED BY THE CITY OF WHITEFISH ONLY FOR CONFORMANCE WITH THE "DESIGN AND CONSTRUCTION STANDARDS," COMPLIANCE WITH DEVELOPMENT AGREEMENT CONDITIONS, AND FOR GENERAL CONCEPTUAL APPROVAL OF PUBLIC IMPROVEMENTS AS SHOWN. THE CITY'S REVIEW DOES NOT VERIFY OR ENSURE THE ACCURACY OF EXISTING OR PROPOSED DIMENSIONS, LINES, COORDINATES, OR GRADES SHOWN, INCLUDING ALL EXISTING UTILITIES SHOWN OR NOT SHOWN.
3. UTILITY LOCATIONS SHOWN REFLECT AVAILABLE RECORD DATA. THE CONTRACTOR SHALL TAKE PRECAUTIONARY MEASURES TO PROTECT ALL UTILITY LINES SHOWN AND OTHER UTILITY LINES OTHERWISE LOCATED. THE CONTRACTOR SHALL CONTACT THE "MONTANA ONE CALL CENTER 1 U-DIG" AT (406) 752-6811 FOR UTILITY LOCATES GIVING A MINIMUM OF 2-FULL WORKING DAYS NOTICE PRIOR TO BEGINNING CONSTRUCTION." ONCE LOCATED IT SHALL BE THE CONTRACTOR'S RESPONSIBILITY TO MAINTAIN MARKINGS.
4. BEFORE WORK BEGINS, THE CONTRACTOR SHALL OBTAIN A PERMIT TO WORK IN THE RIGHT-OF-WAY FROM THE CITY AND MUST NOTIFY THE CITY RIGHT-OF-WAY INSPECTION STAFF AT LEAST 24 HOURS IN ADVANCE OF COMMENCING CONSTRUCTION ACTIVITIES.
5. THE CONTRACTOR SHALL OBTAIN AND MAINTAIN A COMPLETE AND APPROVED SET OF CONSTRUCTION PLANS. THESE DRAWINGS, AND ANY REQUIRED PERMITS, SHALL BE AVAILABLE AT THE PROJECT SITE AT ALL TIMES AND SHALL BE MADE AVAILABLE TO THE CITY STAFF UPON REQUEST. IF CONSTRUCTION PLANS ARE NOT READILY AVAILABLE AT THE PROJECT SITE, THE DIRECTOR OF PUBLIC WORKS MAY ISSUE A STOP WORK ORDER AND HALT ALL CONSTRUCTION ACTIVITIES PENDING COMPLIANCE BY THE CONTRACTOR.
6. THE CONTRACTOR AGREES TO COMPLY WITH THE PROVISIONS OF THE TRAFFIC CONTROL PLAN AND THE "MANUAL ON UNIFORM TRAFFIC CONTROL DEVICES," PART IV, FOR CONSTRUCTION SIGNAGE AND TRAFFIC CONTROL.
7. ALL SURPLUS MATERIALS, TOOLS, AND TEMPORARY STRUCTURES, FURNISHED BY THE CONTRACTOR, SHALL BE REMOVED FROM THE PROJECT SITE BY THE CONTRACTOR. ALL DEBRIS AND RUBBISH CAUSED BY THE OPERATIONS OF THE CONTRACTOR SHALL BE REMOVED, AND THE AREA OCCUPIED DURING CONSTRUCTION ACTIVITIES SHALL BE RESTORED TO ITS ORIGINAL CONDITIONS, WITHIN 48 HOURS OF PROJECT COMPLETION, UNLESS OTHERWISE DIRECTED BY THE DIRECTOR OF PUBLIC WORKS.
8. THE CONTRACTOR IS REQUIRED TO PROVIDE AND MAINTAIN EROSION AND SEDIMENT CONTROL MEASURES IN ACCORDANCE WITH THE APPROVED EROSION CONTROL PLAN. THE DIRECTOR OF PUBLIC WORKS MAY REQUIRE THE CONTRACTOR TO PROVIDE ADDITIONAL EROSION CONTROL MEASURES DUE TO UNFORESEEN EROSION PROBLEMS OR IF THE PLANS DO NOT FUNCTION AS INTENDED.
9. A PRE-CONSTRUCTION MEETING WITH THE CITY OF WHITEFISH IS REQUIRED PRIOR TO THE START OF CONSTRUCTION.
10. ALL WORK SHALL BE PERFORMED BY CITY APPROVED CONTRACTORS.

NO.	REVISION	DATE



DRAWN BY: DJK
 DESIGNED BY: DJK
 QUALITY CHECK: DAP
 DATE: 08.22.2023
 JOB NO. K23-015
 FIELDBOOK

WHITEFISH PICKLEBALL FACILITY
 6393 HWY 93 S, WHITEFISH, MONTANA 59937
PROJECT SITE IMPROVEMENTS
SITE LAYOUT PLAN



SITE LAYOUT PLAN

