

# 1041 SOUTHERN BOULEVARD

BETWEEN WESTCHESTER AVENUE & ALDUS STREET | LONGWOOD





# 1041 SOUTHERN BOULEVARD

BETWEEN WESTCHESTER AVENUE & ALDUS STREET | LONGWOOD

SIZE: 1,617 SF Ground Floor  
1,410 SF Basement

FRONTAGE: 17'

POSSESSION: 4/2026

ASKING RENT: Upon Request

TRANSPORTATION: **2 5 6**

## NEIGHBORING TENANTS:

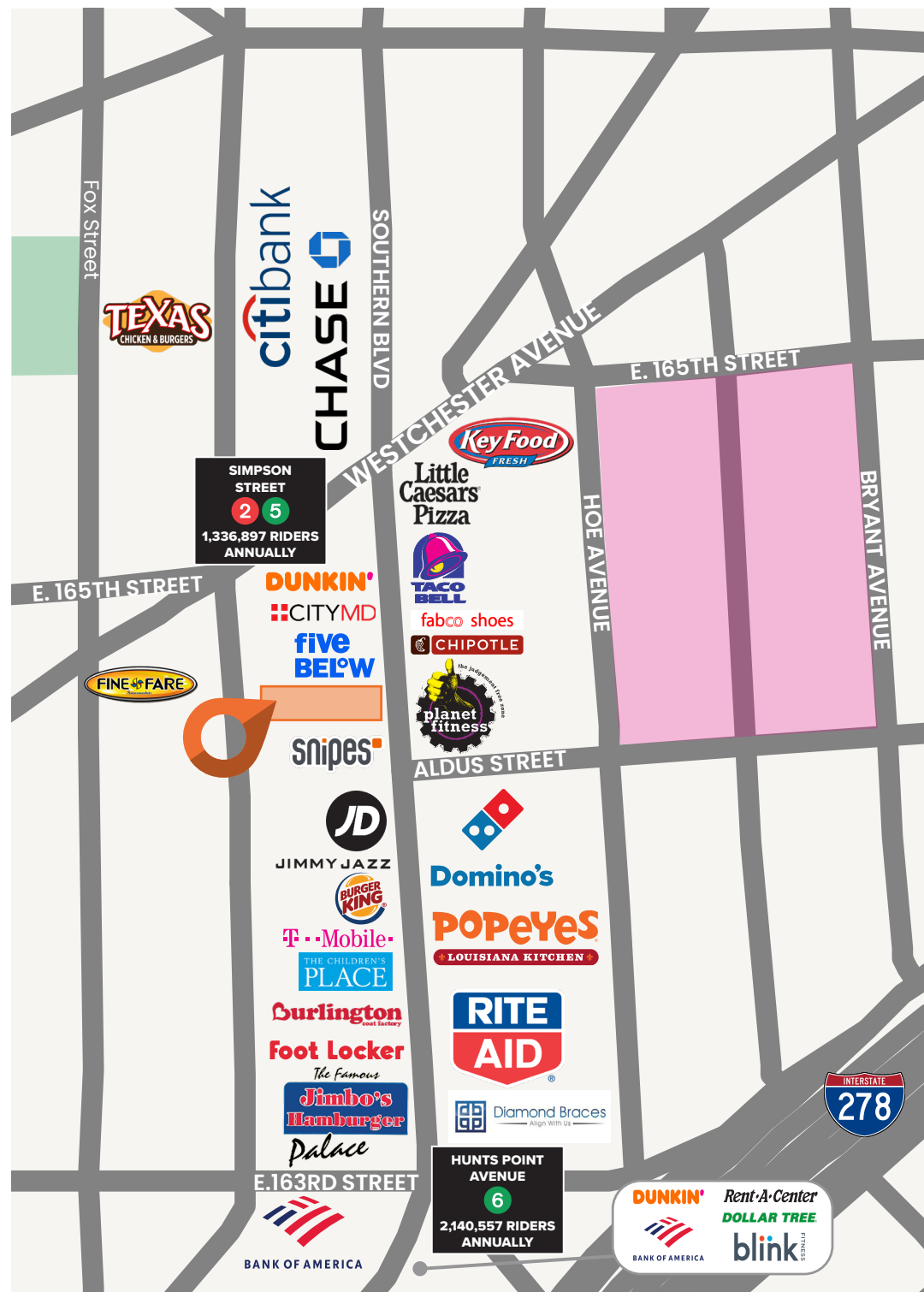
- Burger King, Burlington (coming soon), Children's Place, Chipotle, CityMD, Dominos, Fabco Shoes, Five Below, Foot Locker, JD Sports, Popeye's, Rite Aid, Snipes

FOR MORE INFORMATION, PLEASE CONTACT:

**MAYER GHONOJA**  
MG@ksrny.com  
212.548.3945

**ELLIOT STEIN**  
EStein@ksrny.com  
917.993.1442

**BARRY FISHBACH**  
Fishbach@ksrny.com  
917.273.6752

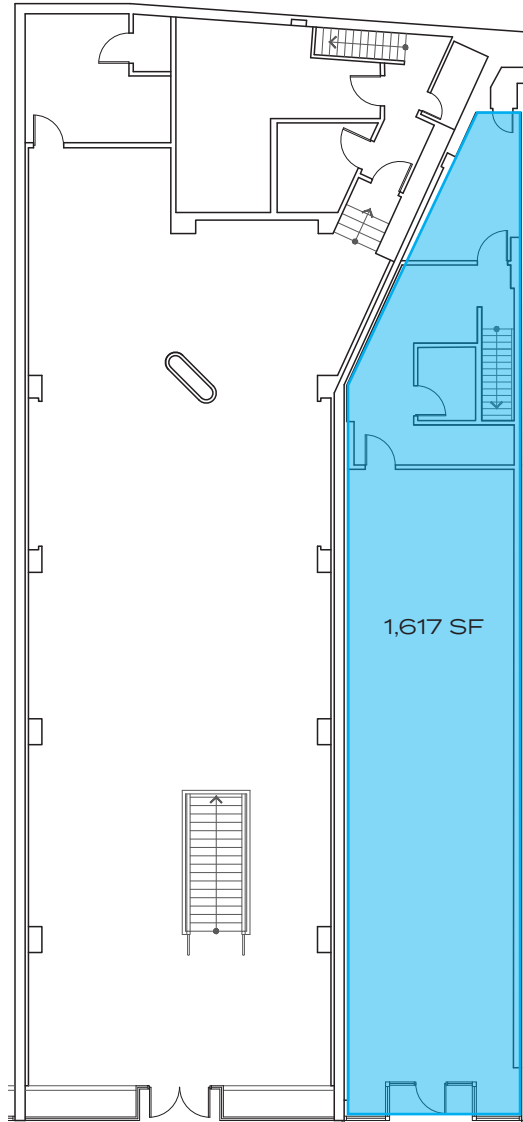


# 1041 SOUTHERN BOULEVARD

BETWEEN WESTCHESTER AVENUE & ALDUS STREET | LONGWOOD

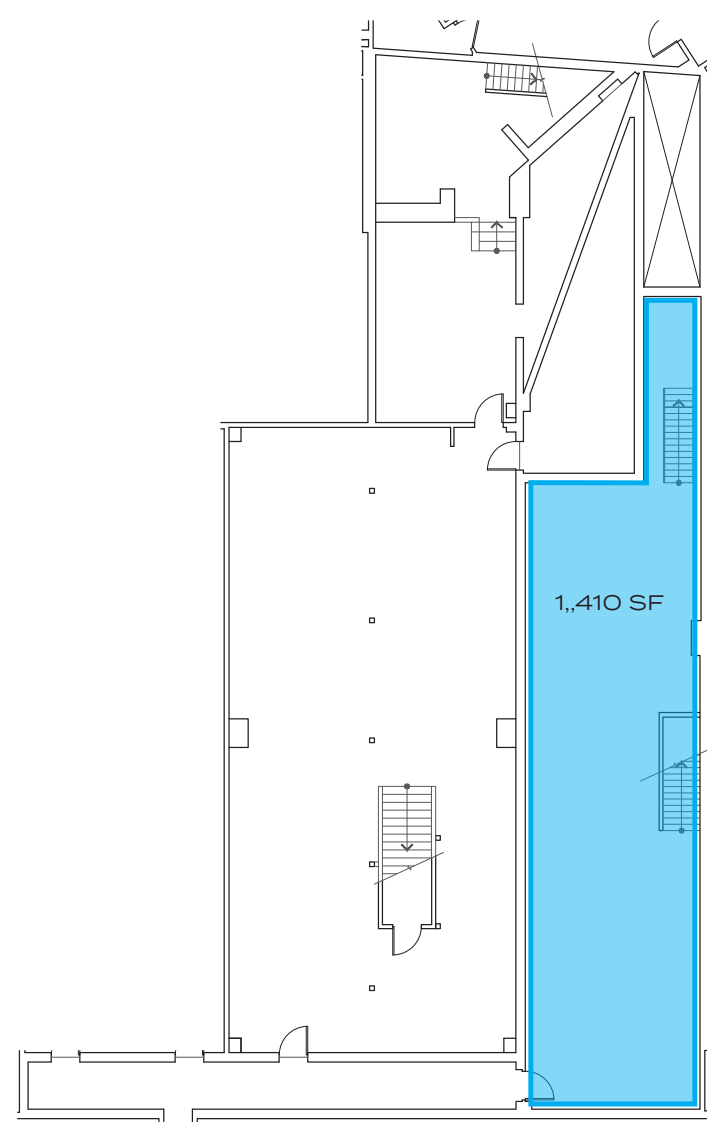
FLOOR PLANS:

GROUND FLOOR



SOUTHERN BLVD

BASEMENT



SOUTHERN BLVD

# 1041 SOUTHERN BOULEVARD

BETWEEN WESTCHESTER AVENUE & ALDUS STREET | LONGWOOD

FOR MORE INFORMATION,  
PLEASE CONTACT:

**MAYER GHONOJA**

212.548.3945 | [MG@ksrny.com](mailto:MG@ksrny.com)

**ELLIOT STEIN**

917.993.1442 | [EStein@ksrny.com](mailto:EStein@ksrny.com)

**BARRY FISHBACH**

917.273.6752 | [Fishbach@ksrny.com](mailto:Fishbach@ksrny.com)

