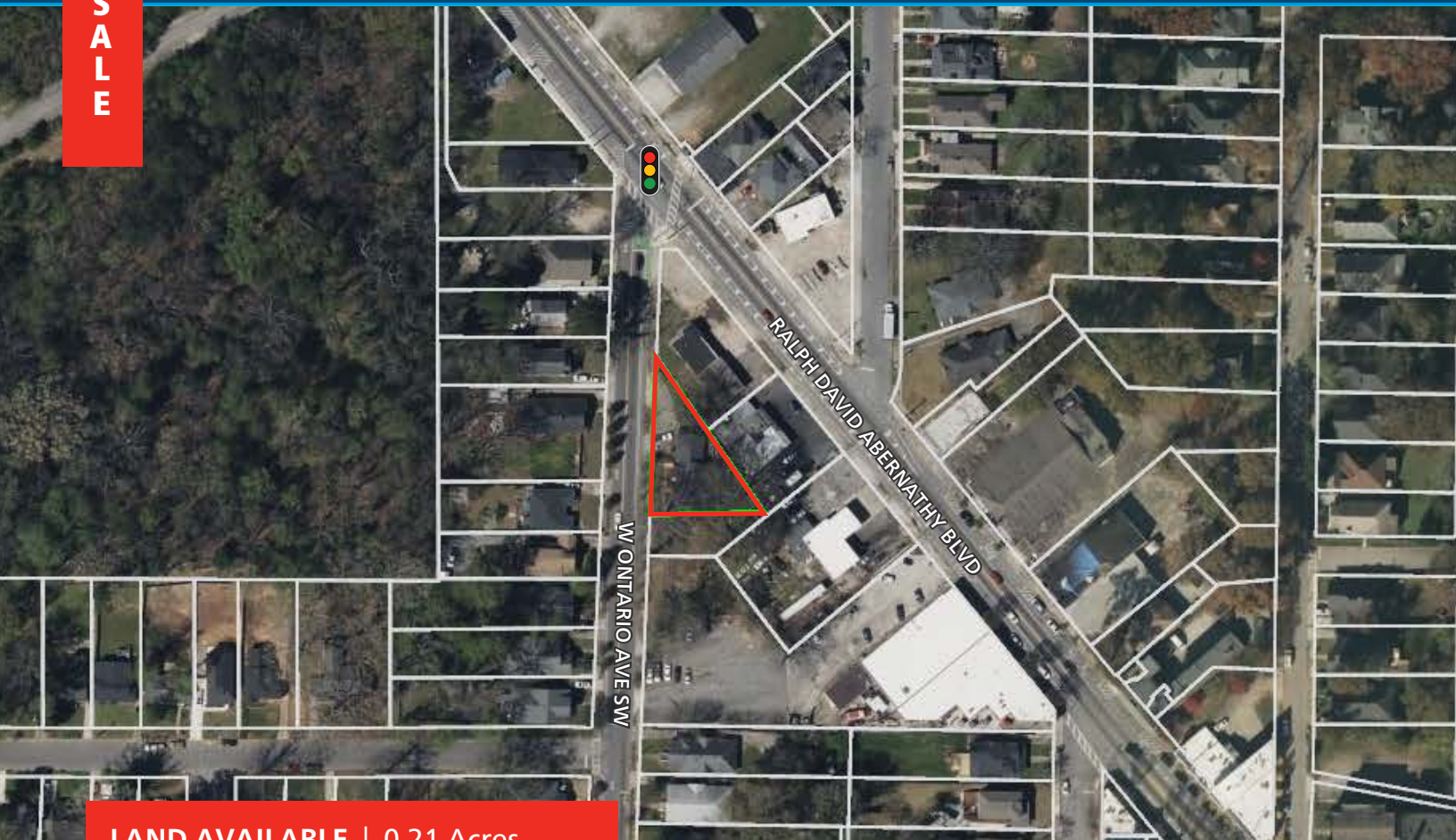


FOR SALE

# WEST END LAND

404 W Ontario Ave SW, Atlanta, GA 30310



**LAND AVAILABLE | 0.21 Acres**

## PROPERTY HIGHLIGHTS

- 0.21 Acres in Atlanta’s historic West End neighborhood
- Parcel is zoned C-1
- 160 feet of frontage on W Ontario Ave
- 0.5 miles from I-20 at MLK Jr Drive
- 0.5 miles from the Westside BeltLine Trail
- Close to the popular Lee + White mixed-use development, the Atlanta University Center, The Met, and West End Mall.



## AREA DEMOGRAPHICS (2023):

	1-MILE	3-MILE	5-MILE
POPULATION	11,519	95,735	310,104
HOUSEHOLDS	4,618	37,111	138,967
AVG HH INCOME	\$84,952	\$71,852	\$102,565

**BRYAN DAVIS**  
 P: 770.913.3996  
 E: bdavis@ackermanco.net

**Ackerman Retail**  
 A DIVISION OF ACKERMAN & CO

# WEST END LAND

404 W Ontario Ave SW, Atlanta, GA 30310



C-1 ZONING ALLOWS FOR FLEXIBLE USES INCLUDING CLINICS, OFFICE, DAYCARE, AND DELIVERY BASED COMMERCIAL KITCHEN

404 W ONTARIO AVE SW

KIPP STRIVE ACADEMY  
405 STUDENTS

Kroger

ATLANTA BELTLINE  
WESTSIDE TRAIL

TUSKEGEE AIRMAN  
GLOBAL ACADEMY  
644 STUDENTS

HJ RUSSELL  
WEST END ACADEMY  
370 STUDENTS

LEE + WHITE

## Ackerman Retail

BRYAN DAVIS

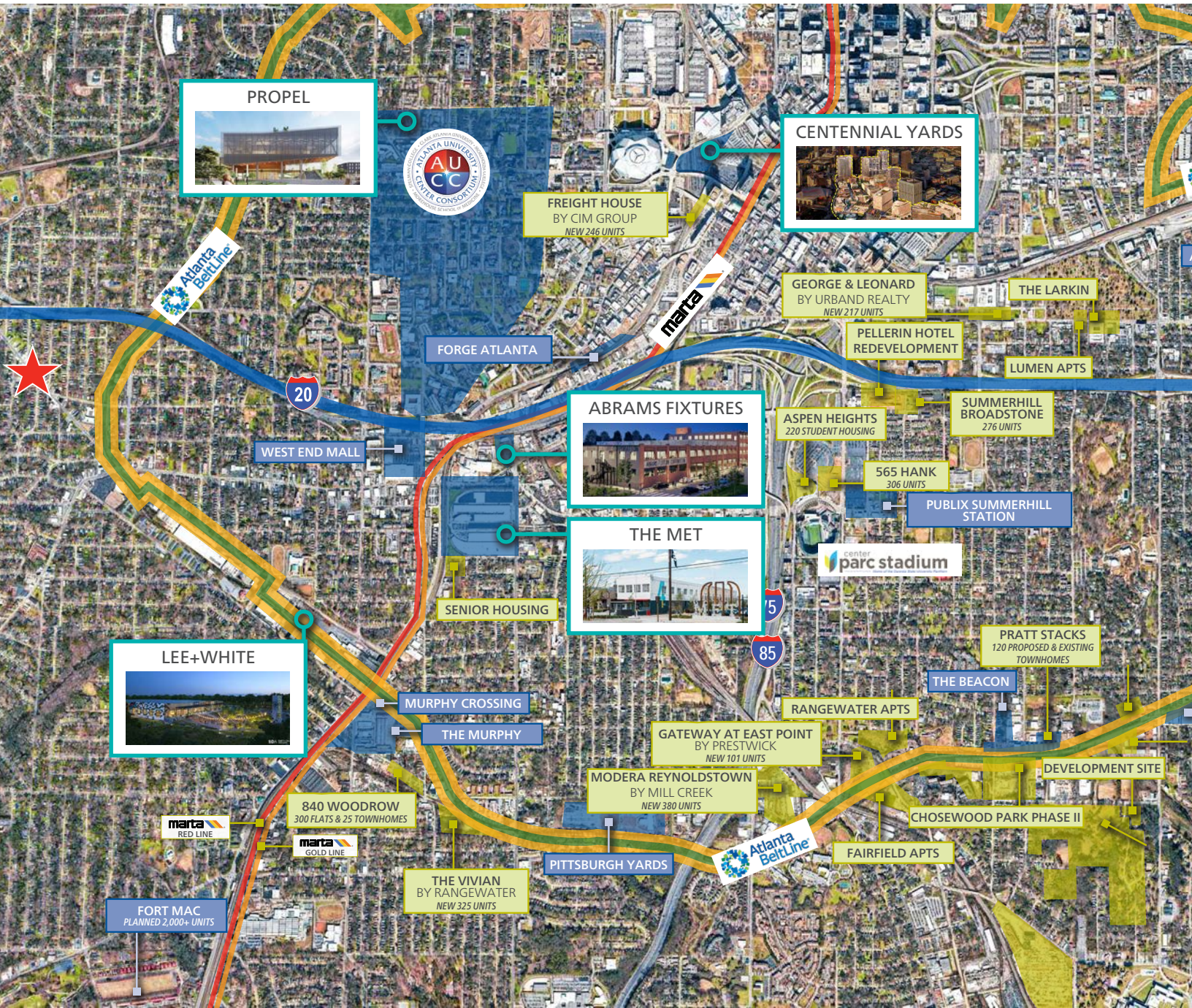
P: 770.913.3996

E: bdavis@ackermanco.net

©2023 Ackerman & Co. All rights reserved. While we have no reason to doubt the accuracy of the information provided from sources we deem reliable, we cannot guarantee it and therefore assume no liability for errors, omissions or changes to this content. Sources include CoStar, SitesUSA, ESRI, and Georgia DOT.

# WEST END LAND

404 W Ontario Ave SW, Atlanta, GA 30310



## Ackerman Retail

BRYAN DAVIS

P: 770.913.3996

E: bdavis@ackermanco.net

©2023 Ackerman & Co. All rights reserved. While we have no reason to doubt the accuracy of the information provided from sources we deem reliable, we cannot guarantee it and therefore assume no liability for errors, omissions or changes to this content. Sources include CoStar, SitesUSA, ESRI, and Georgia DOT.