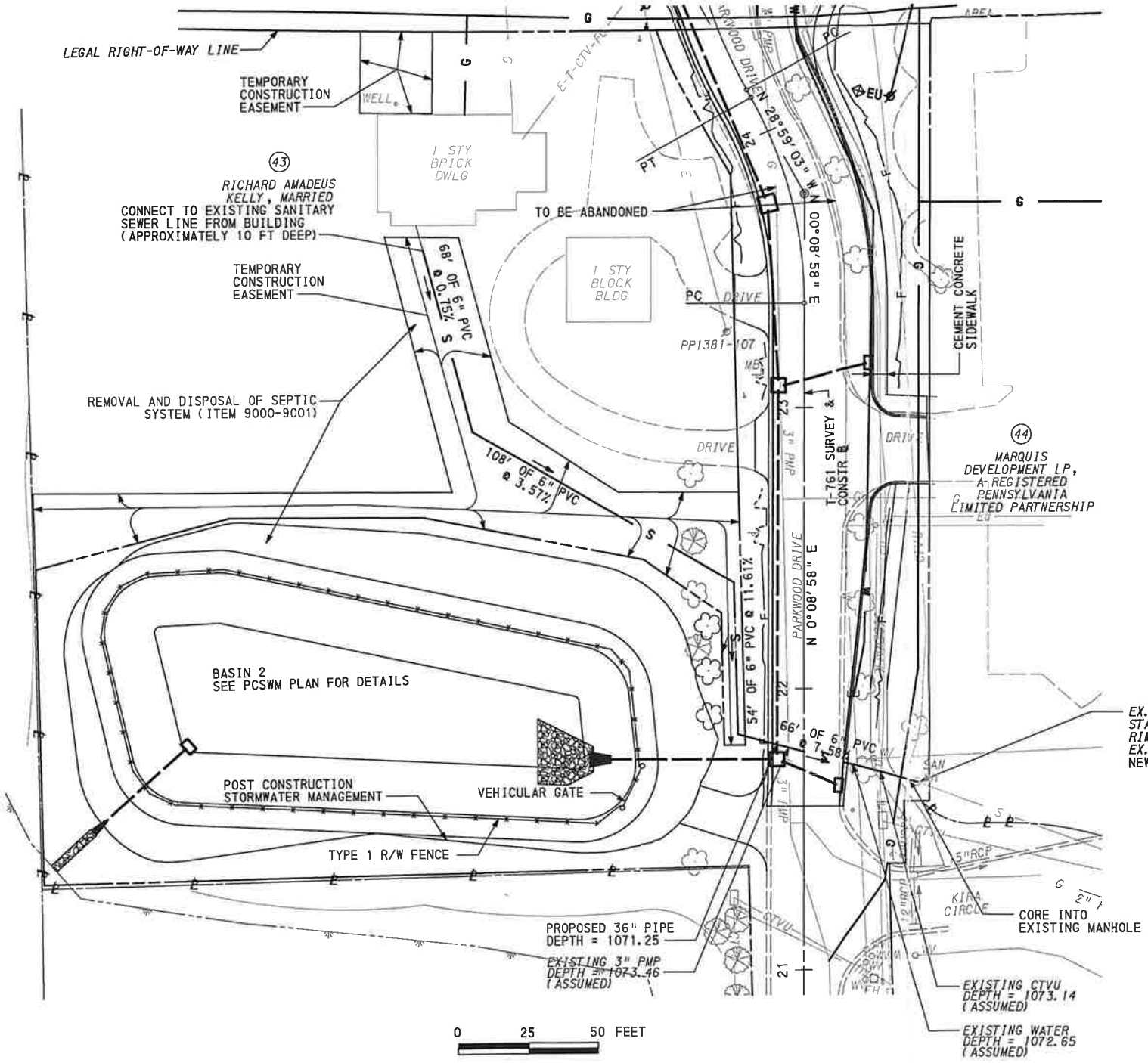


DISTRICT	COUNTY	ROUTE	SECTION	SHEET
10-0	BUTLER	3020	298	32 OF 88
CRANBERRY TOWNSHIP				
REVISION NUMBER	REVISIONS	DATE	BY	APPROVED



**TABLATIONS OF QUANTITIES**  
FOR INFORMATION ONLY

ITEM NO 9000-9000 PROPOSED SEWERLINE LATERAL FOR PARCEL 43 (LUMP SUM)			
MATERIAL	SIZE	QUANTITY	UNITS
SDR 35 SANITARY SEWER PIPE	6"	296	LF
CORE MANHOLE	6"	1	EACH
PIPE FITTINGS	N/A	4	EACH
EXCAVATION	N/A	1	LS
BACKFILL	N/A	1	LS

EX. MANHOLE  
STA 21+67  
RIM 1076.31  
EX. INV = 1064.11  
NEW INV = 1066.00

PROPOSED 36" PIPE  
DEPTH = 1071.25  
EXISTING 3" PMP  
DEPTH = 1073.46  
(ASSUMED)

EXISTING CTUV  
DEPTH = 1073.14  
(ASSUMED)  
EXISTING WATER  
DEPTH = 1072.65  
(ASSUMED)



DETAIL: PARCEL 43 SANITARY SEWER LATERAL

8/23/2022 c:\vms\wise\megan.frye\kck.com\0016130913020-298\_RDDT\_27.dgn

DES: DPR    CKD: RCN