

Industrial Space Available

Contact Broker for Pricing

160 National Avenue, Building 1, 3 & 4
Spartanburg, SC 29303
Site #1496

103,073 - 206,176 SF with Rail Access + Expansion Capabilities Available



Contact Us

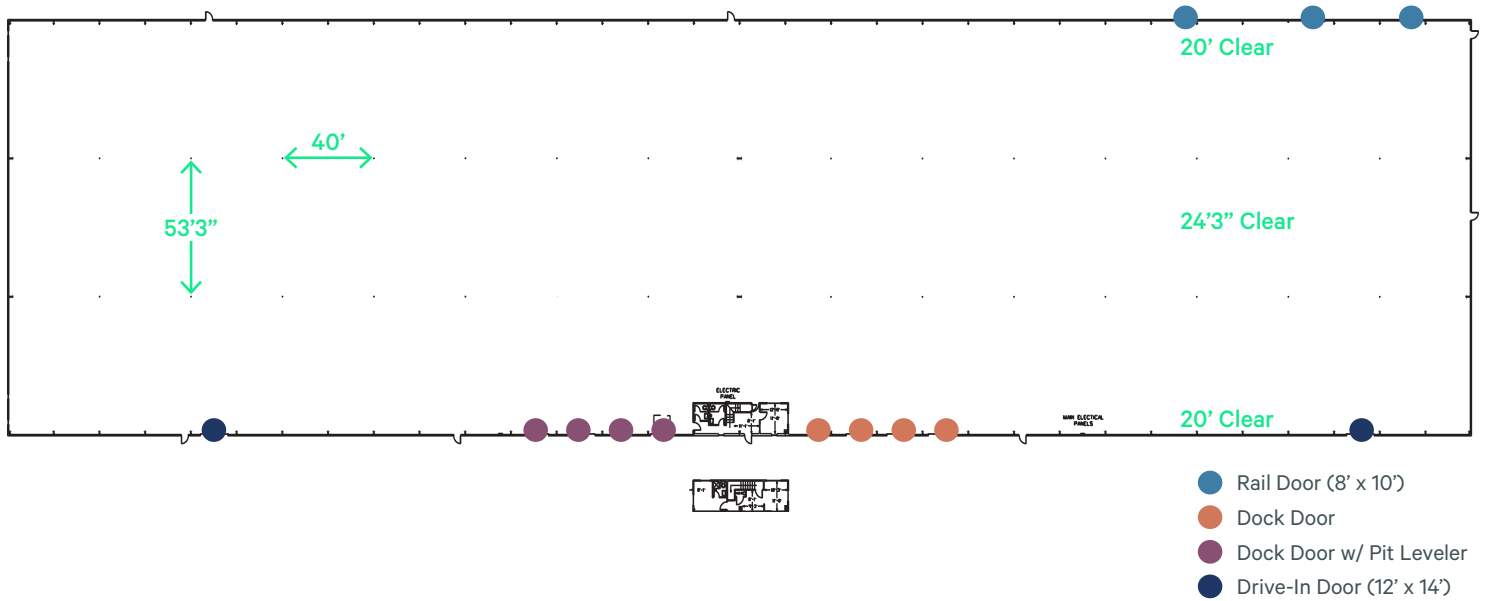
Campbell Lewis, SIOR
First Vice President
+1 404 312 1403
campbell.lewis@cbre.com

Marcus Cornelius, SIOR
First Vice President
+1 864 320 0445
marcus.cornelius@cbre.com

Building 1

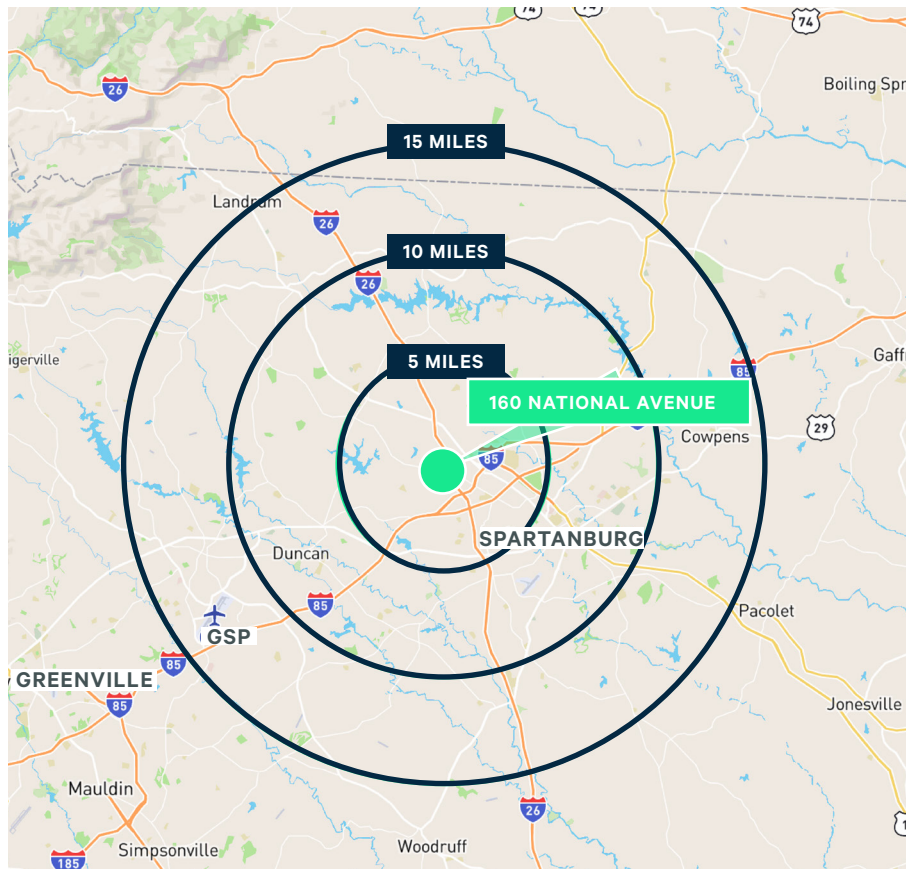
160 National Avenue | Spartanburg, SC 29303

For Lease



Building 1 Details

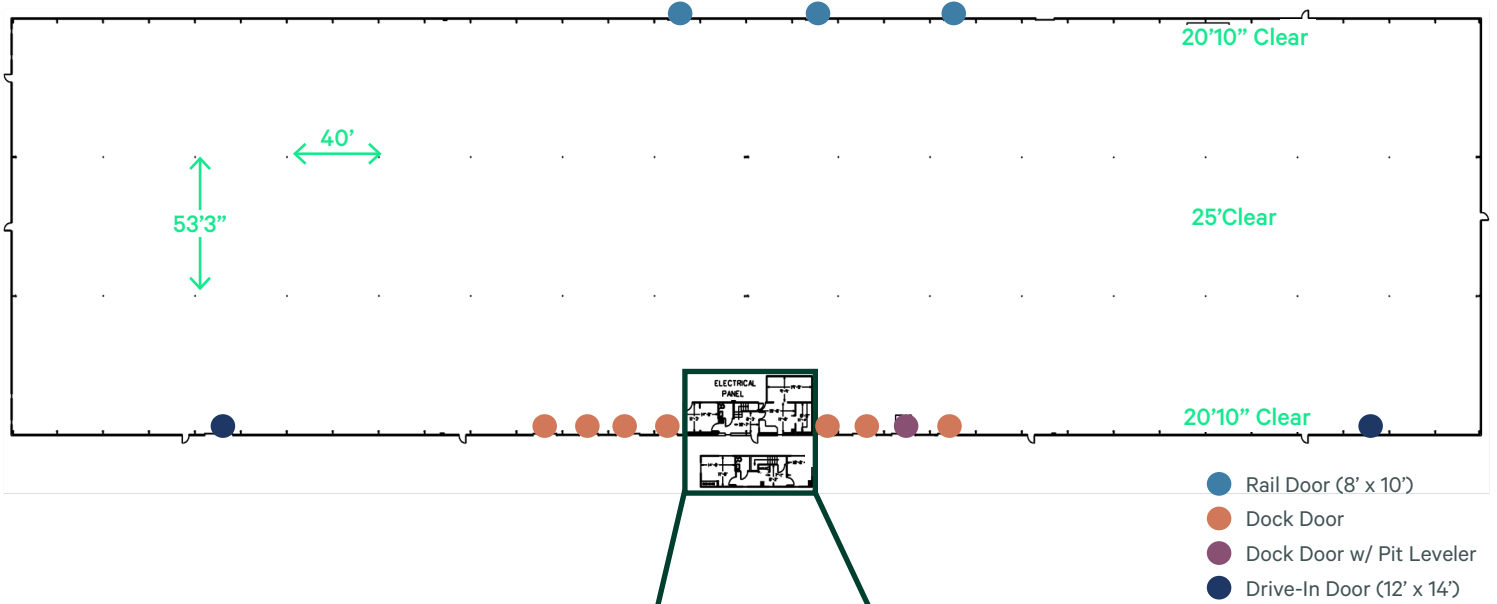
- + Building Size: ±103,103 SF
- + Office Space: ±2,800 SF
- + Year Built: 1990
- + Lot Size: 25.19 Acres
- + Column Spacing: 40' x 53'3"
- + Clear Height: 20' - 24'3"
- + Dock Doors: 8 (4 w/ pit levelers)
- + Drive-In Doors: 2 (12' x 14')
- + Sprinkler: Wet
- + Power: 225 amps
- + Auto Parking: 12 Spaces
- + Rail Line: Norfolk Southern



Building 3

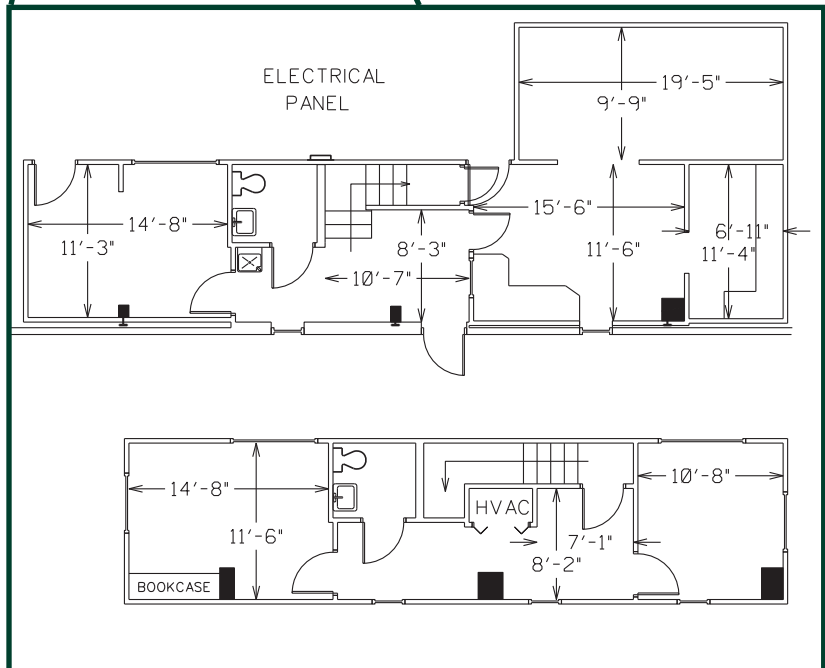
160 National Avenue | Spartanburg, SC 29303

For Lease



Building 3 Details

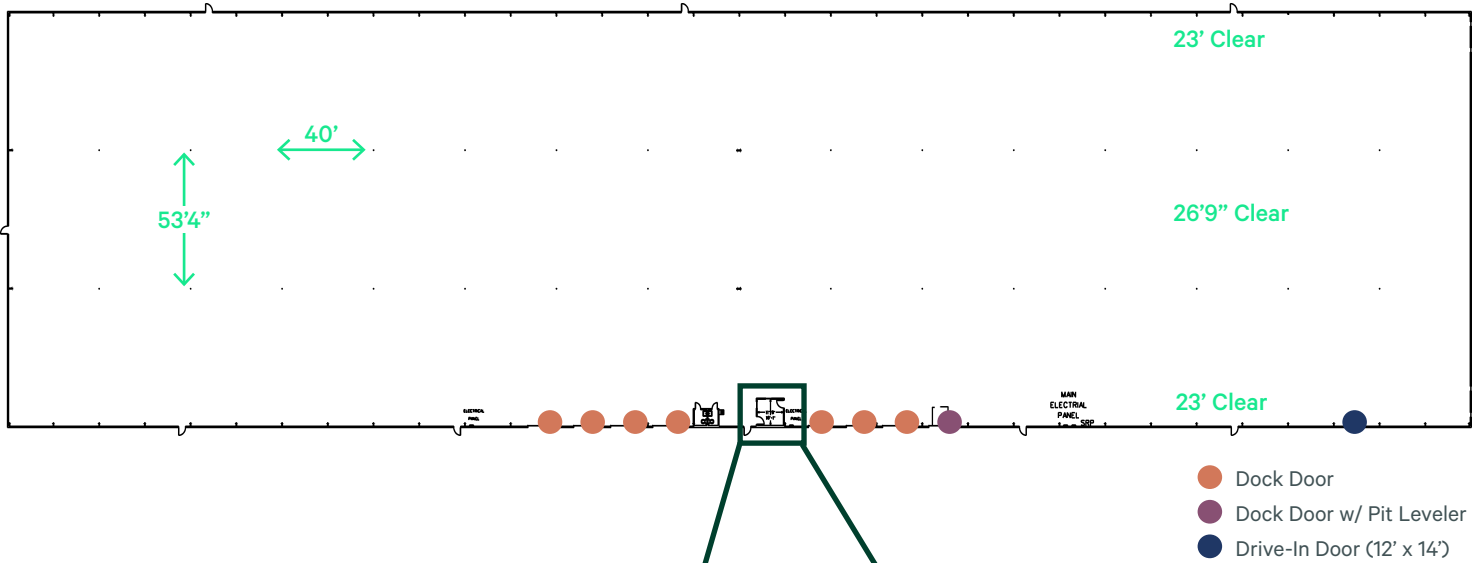
- + Building Size: ±103,073 SF
- + Office Space: ±1,100 SF
- + Year Built: 1990
- + Column Spacing: 40' x 53'3"
- + Clear Height: 20'10" - 25'
- + Dock Doors: 8 (4 w/ pit levelers)
- + Drive-In Doors: 2 (12' x 14')
- + Sprinkler: Wet
- + Power: 225 amps
- + Auto Parking: 12 Spaces
- + Rail Line: Norfolk Southern



Building 4

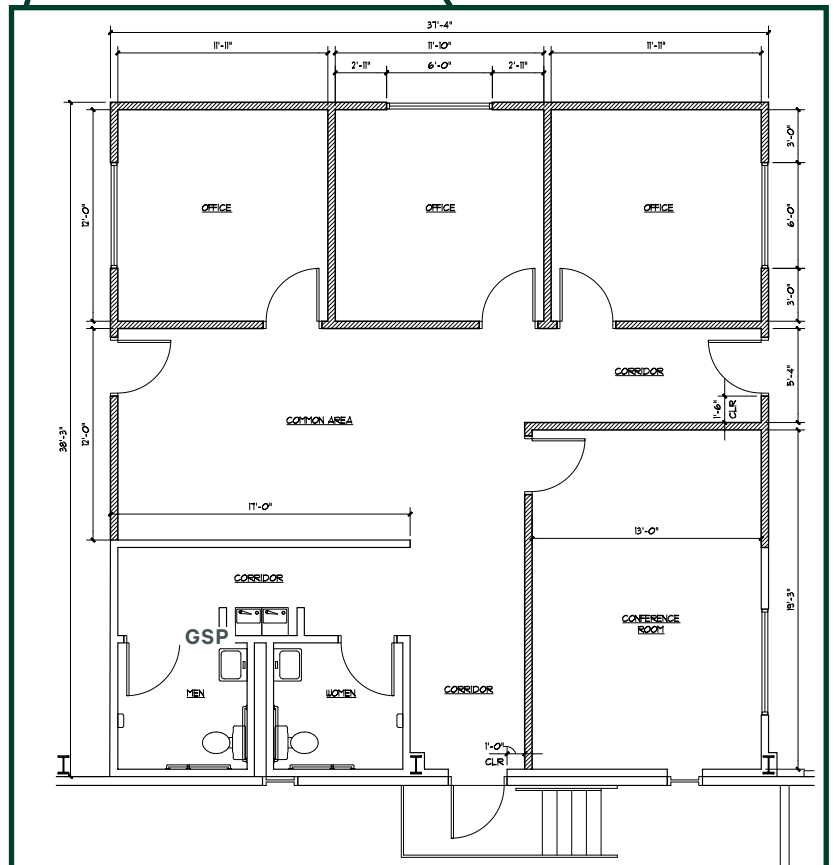
160 National Avenue | Spartanburg, SC 29303

For Lease



Building 4 Details

- + Available May 1, 2025
- + Building Size: ±102,560 SF
- + Office Space: ±1,500 SF
- + Year Built: 1990
- + Column Spacing: 40' x 53'4"
- + Clear Height: 23' - 26'9"
- + Dock Doors: 8 (1 w/ pit levelers)
- + Drive-In Doors: 1 (12' x 14')
- + Sprinkler: Wet
- + Power: 225 amps
- + Auto Parking: 12 Spaces



Building 1, 3 & 4

160 National Avenue | Spartanburg, SC 29303

For Lease



	Population	Daytime Population	Businesses	Labor Force	Bachelor's Degree or Higher	Average HH Income
5 Miles	76,306	76,960	2,299	35,586	7,836	\$80,693
10 Miles	244,887	249,104	7,569	115,620	30,177	\$85,058
15 Miles	372,513	376,230	10,870	175,490	48,077	\$87,611

© 2024 CBRE, Inc. All rights reserved. This information has been obtained from sources believed reliable, but has not been verified for accuracy or completeness. You should conduct a careful, independent investigation of the property and verify all information. Any reliance on this information is solely at your own risk. CBRE and the CBRE logo are service marks of CBRE, Inc. All other marks displayed on this document are the property of their respective owners, and the use of such logos does not imply any affiliation with or endorsement of CBRE. Photos herein are the property of their respective owners. Use of these images without the express written consent of the owner is prohibited.