



For Lease

±25,093 SF

Contact us:

Peter Mikacich

+1 415 288 7815
peter.mikacich@colliers.com
Lic. 01133104

Shaun Bloomquist

+1 415 288 7867
shaun.bloomquist@colliers.com
Lic. 01501651

Ian Armstrong

+1 415 510 4724
ian.armstrong@colliers.com
Lic. 02069601

Colliers

101 Second Street, 11th Floor
San Francisco, CA 94105
P: +1 415 788 3100

781 Beach Street San Francisco, CA 94109

Waterfront Office Suites Available with Incredible Views

Highlights

- Suite 200: ±8,017 square feet
- Suite 302: ± 2,678 square feet
- Suite 330: ±4,321 square feet
- Suite 400: ±7,140 square feet
- Suite 410: ±2,937 square feet
- Sweeping views of Alcatraz & Aquatic Park
- Brick and Timber Building
- Code compliant elevators, restrooms and building lobby
- Excellent location surrounded by parking and amenities
- Competitive terms available

This document/email has been prepared by Colliers for advertising and general information only. Colliers makes no guarantees, representations or warranties of any kind, expressed or implied, regarding the information including, but not limited to, warranties of content, accuracy and reliability. Any interested party should undertake their own inquiries as to the accuracy of the information. Colliers excludes unequivocally all inferred or implied terms, conditions and warranties arising out of this document and excludes all liability for loss and damages arising there from. This publication is the copyrighted property of Colliers and /or its licensor(s). © 2024. All rights reserved. This communication is not intended to cause or induce breach of an existing listing agreement.

Accelerating success.

For Lease

781 Beach St



See **page 8** to view nearby amenities to 781 Beach

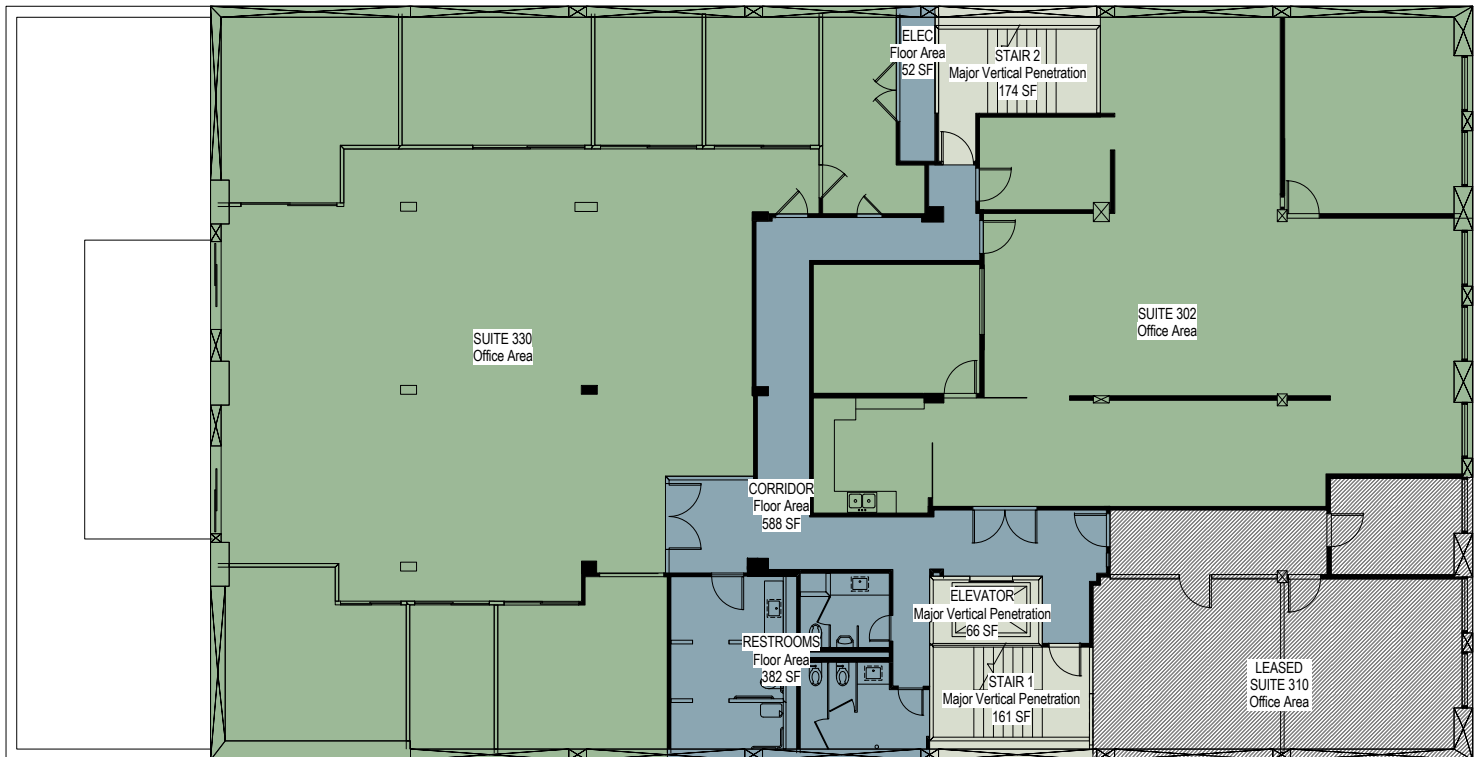
Floor Plan

2nd Floor



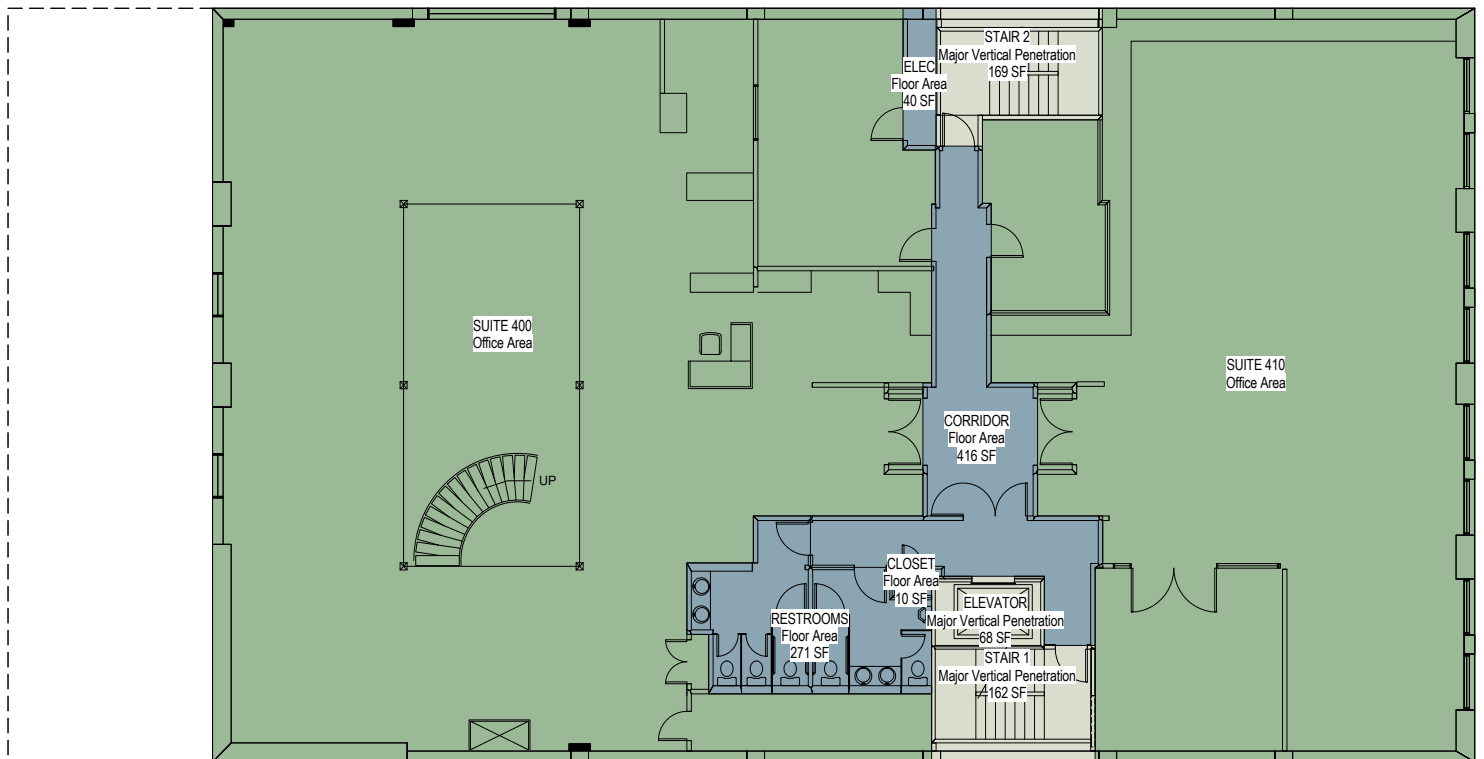
Floor Plan

3rd Floor



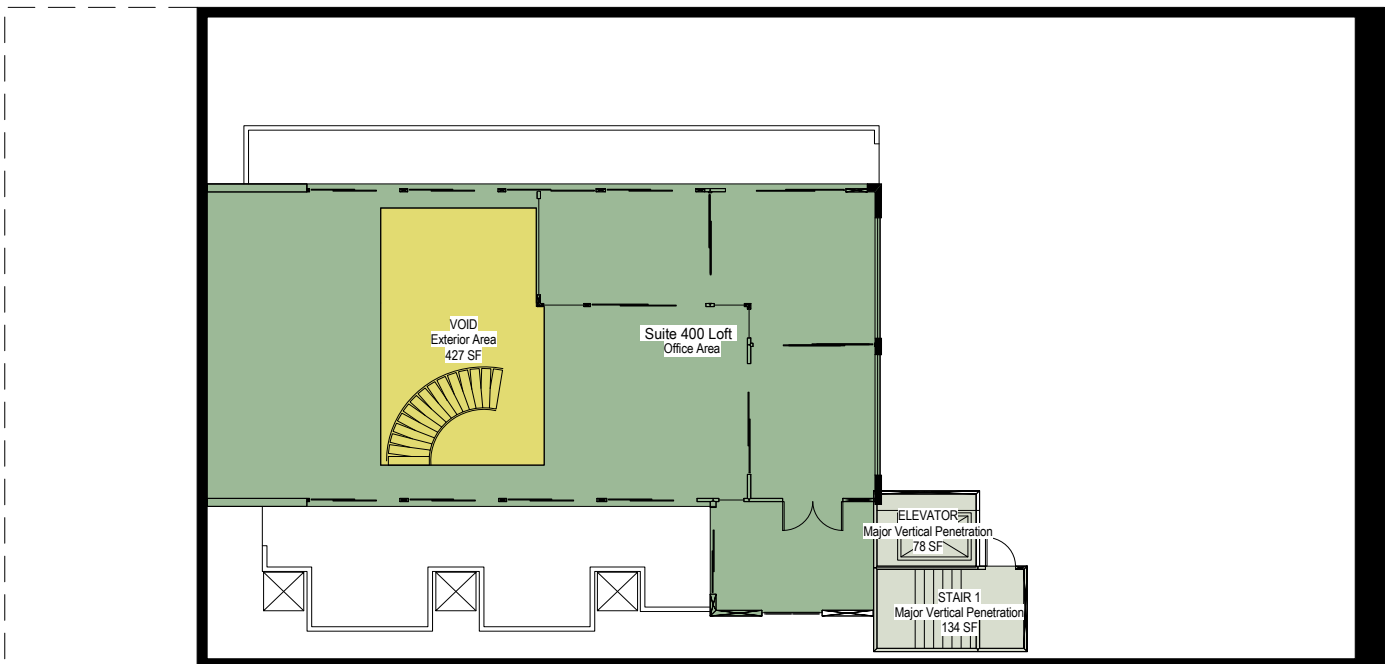
Floor Plan

4th Floor



Floor Plan

Suite 400 Loft



Location



Subject property

Legend

Nearby Amenties Map

ANCHORAGE SQUARE SHOPPING CENTER

- RAV's Italian Eatery
- Anchorage Square Garage
- LOLA's SF
- Lids
- The Crepe Café
- Quickly
- In-and-Out

THE CANNERY SHOPPING CENTER

- Norman's Ice Cream & Freezes
- Flying Ninja Sushi
- Pomegranate Coffee Shop
- Academy of Art Galleries
- SF Fire Engine's Tour

ARGONAUT A NOBLE HOUSE HOTEL



HYDE STREET

LARKIN STREET

BEACH STREET

Powell / Hyde
Cable Car Turnaround



HYDE STREET PIER

- Historic Place with Old Timey Ships
- SF Bay Sportfishing
- SF Love Tours
- Dolphin Swimming & Boating Club



SAN FRANCISCO MARITIME
NATIONAL PARK ASSOCIATION



Subject property



Public Parking Garage

Legend

Demographics

| 2022 Summary | 0.25 Mile | 0.5 Mile | 1 Mile |
|--|-----------|----------|--------|
| Total Population | 1,979 | 11,371 | 61,240 |
| Total Households | 1,069 | 6,055 | 32,688 |
| Total Family Households | 319 | 1,832 | 10,285 |
| Average Household Size | 1.83 | 1.87 | 1.86 |
| Median Age | 42.3 | 38.7 | 39.8 |
| Population Age 25+ | 1,741 | 10,517 | 56,323 |
| 2010-2020 Population: Annual Growth Rate | 0.06% | 0.80% | 0.79% |

Population by Sex

| | | | |
|-------------------|-------|-------|--------|
| Male Population | 992 | 5,441 | 29,280 |
| % Male | 42.0% | 38.7% | 39.6% |
| Female Population | 988 | 5,930 | 31,960 |
| % Female | 42.6% | 38.7% | 39.9% |

Income & Households

| | | | |
|--------------------------|-----------|-----------|-----------|
| Median Household Income | \$181,693 | \$165,806 | \$156,565 |
| Average Household Income | \$256,959 | \$233,320 | \$219,735 |
| Per Capita Income | \$143,048 | \$125,309 | \$116,729 |

Business Summary

| | | | |
|-------------------------------|--------|--------|---------|
| Total Businesses | 310 | 873 | 4,045 |
| Total Daytime Population | 10,786 | 32,554 | 117,866 |
| Daytime Population: Workers | 7,494 | 14,530 | 44,392 |
| Daytime Population: Residents | 888 | 3,745 | 20,074 |