

FOR LEASE

Lindon Flex Warehouse

32 S 1800 W, Unit A & B | Lindon, UT

Property Information

- Total Available: 18,393 SF
 - Office: 2,842 SF
 - Warehouse: 15,551 SF
- 2 GL Doors
- 3 Phase Power
- High End Office Buildout
- Excellent Location with Good I-15 Access
- Available May 1, 2026
- Lease Rate: \$1.25 SF / NNN

James Yeates

Vice President
+1 801 995 0049
james.yeates@colliers.com

Justin Irvine

Vice President
+1 801 400 4260
justin.irvine@colliers.com

Colliers

2100 Pleasant Grove Blvd., Suite 200
Pleasant Grove, UT 84062
Main: +1 801 947 8300
colliers.com

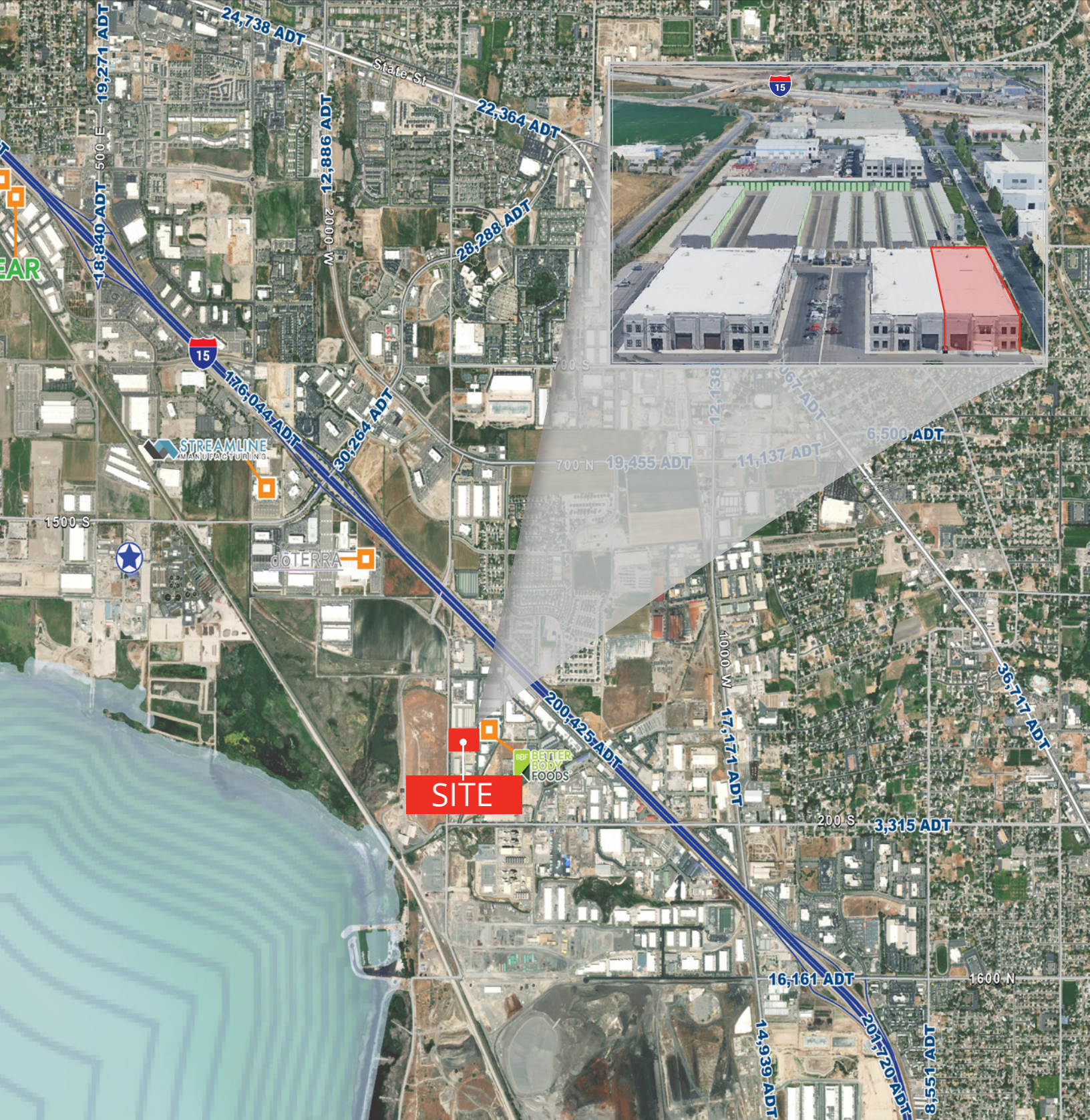
Floor Plan

- AVAILABLE
- TOTAL | 18,393 SF
- WAREHOUSE | 15,551 SF
- OFFICE | 2,842 SF
- OCCUPIED



Lindon Industrial Flex Warehouse | For Lease





Colliers
2100 Pleasant Grove Blvd., Suite 200
Pleasant Grove, UT 84062
Main: +1 801 947 8300
colliers.com

James Yeates
Vice President
+1 801 995 0049
james.yeates@colliers.com

Justin Irvine
Vice President
+1 801 400 4260
justin.irvine@colliers.com

This document has been prepared by Colliers International for advertising and general information only. Colliers International makes no guarantees, representations or warranties of any kind, expressed or implied, regarding the information including, but not limited to, warranties of content, accuracy and reliability. Any interested party should undertake their own inquiries as to the accuracy of the information. Colliers International excludes unequivocally all inferred or implied terms, conditions and warranties arising out of this document and excludes all liability for loss and damages arising there from. This publication is the copyrighted property of Colliers International and/or its licensor(s). ©2025. All rights reserved.