



VIRTUAL
TOUR



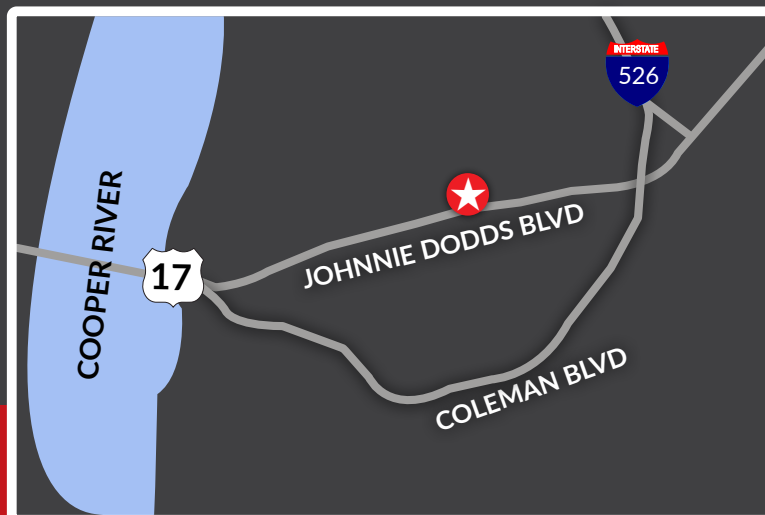
PRICE REDUCED

STAND ALONE OFFICE BUILDING

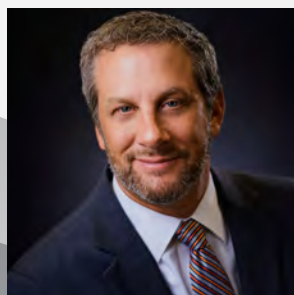
FOR SALE OR LEASE

WITH EXCELLENT VISIBILITY

816 Johnnie Dodds Blvd
Mt. Pleasant SC 29464



[**Click Here for S.C. Agency Relationships Disclosure](#)

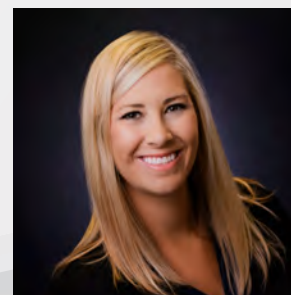


Jon Chalfie
Vice President of Brokerage
843.345.6000



LANDMARK
ENTERPRISES
COMMERCIAL REAL ESTATE

www.landmark-enterprises.com



Hailey Clifton
Associate
843.300.5209

*We obtained the information above from sources we believe to be reliable. However, we have not verified its accuracy and make no guarantee, warranty or representation about it. It is submitted subject to the possibility of errors, omissions, change of price, rental or other conditions, prior sale, lease or financing, or withdrawal without notice. We include projections, opinions, assumptions or estimates for example only, and they may not represent current or future performance of the property. You and your tax and legal advisors should conduct your own investigation of the property and transaction.

STAND ALONE OFFICE BUILDING **FOR SALE OR LEASE**

WITH EXCELLENT VISIBILITY



OFFERING SUMMARY

ADDRESS:

816 Johnnie Dodds Blvd.
Mt. Pleasant, SC 29464

TMS:

535-05-00-154

COUNTY:

Charleston

LEASE PRICE:

\$27.50/SF NNN

SALE PRICE:

\$3,100,000

- Immaculate 8,800 SF office space located in the heart of Mount Pleasant, and only a few minutes away from Downtown Charleston and I-26/I-526.
- This is an unmatched opportunity to locate your business along one of the busiest corridors in the market.
- This adaptive reuse of a former restaurant will accentuate the Class A features; from the open collaborative layout to the efficiently laid out combination of bullpen, private offices, chef style kitchen/break area and an abundance of natural light.
- The space can easily be configured for nearly every business.
- Fully furnished and designed for teamwork via multiple seating configurations, meeting spaces, and conference rooms.



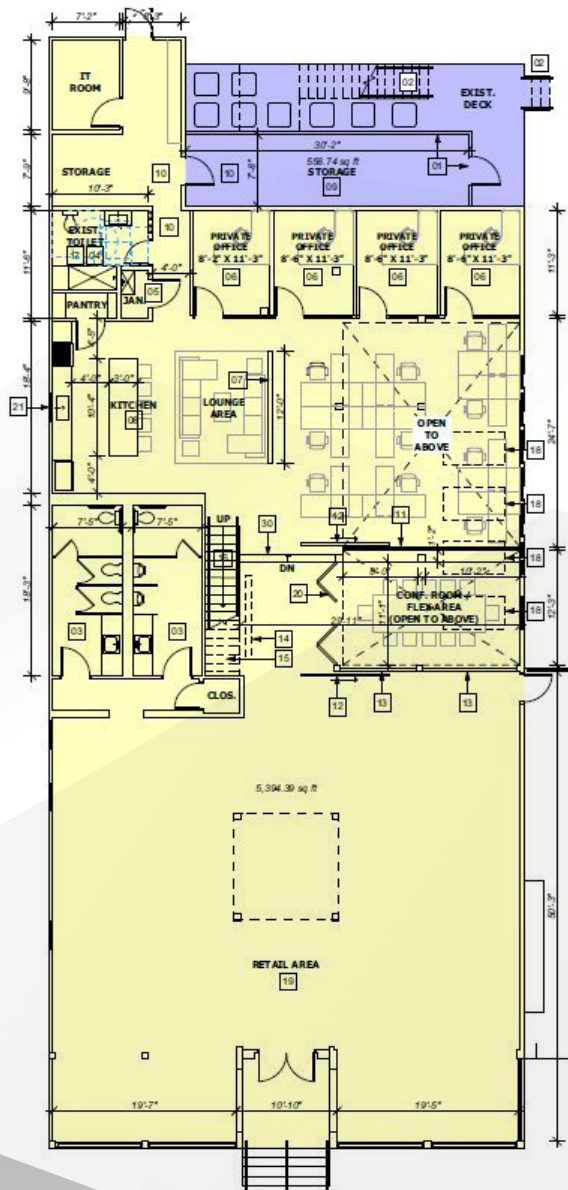
LANDMARK
ENTERPRISES
COMMERCIAL REAL ESTATE

816 JOHNNIE DODDS BLVD. | MT. PLEASANT, SC 29464

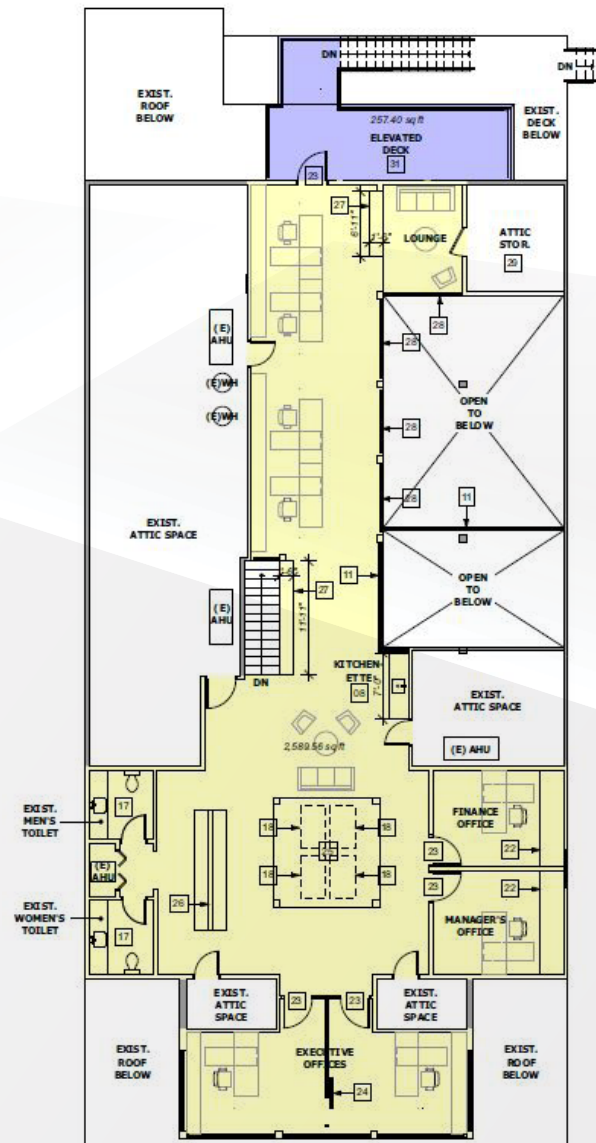
STAND ALONE OFFICE BUILDING FOR SALE OR LEASE

WITH EXCELLENT VISIBILITY

1ST FLOOR PLAN



2ND FLOOR PLAN

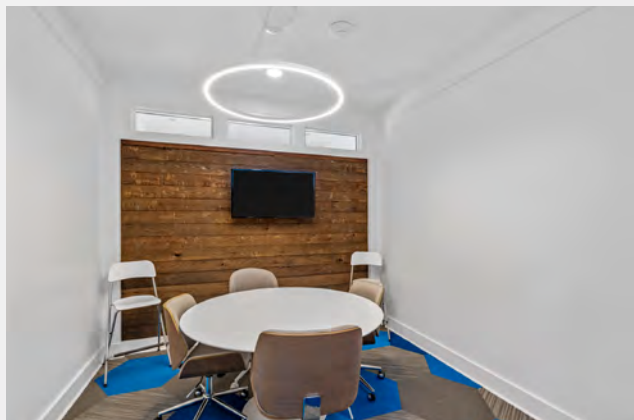


816 JOHNNIE DODDS BLVD. | MT. PLEASANT, SC 29464



LANDMARK
ENTERPRISES
COMMERCIAL REAL ESTATE

STAND ALONE OFFICE BUILDING **FOR SALE OR LEASE** WITH EXCELLENT VISIBILITY



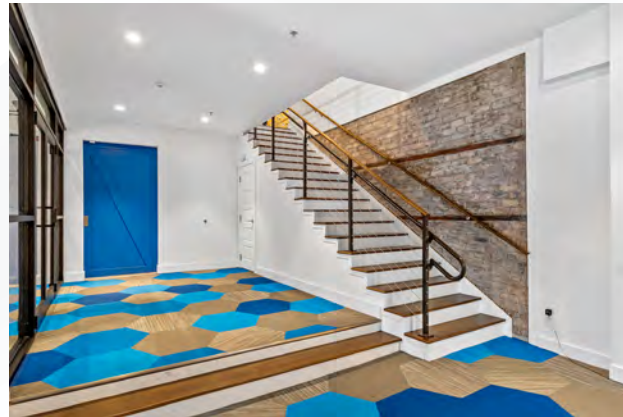
816 JOHNNIE DODDS BLVD. | MT. PLEASANT, SC 29464



LANDMARK
ENTERPRISES
COMMERCIAL REAL ESTATE

www.landmark-enterprises.com

STAND ALONE OFFICE BUILDING **FOR SALE OR LEASE** WITH EXCELLENT VISIBILITY



816 JOHNNIE DODDS BLVD. | MT. PLEASANT, SC 29464



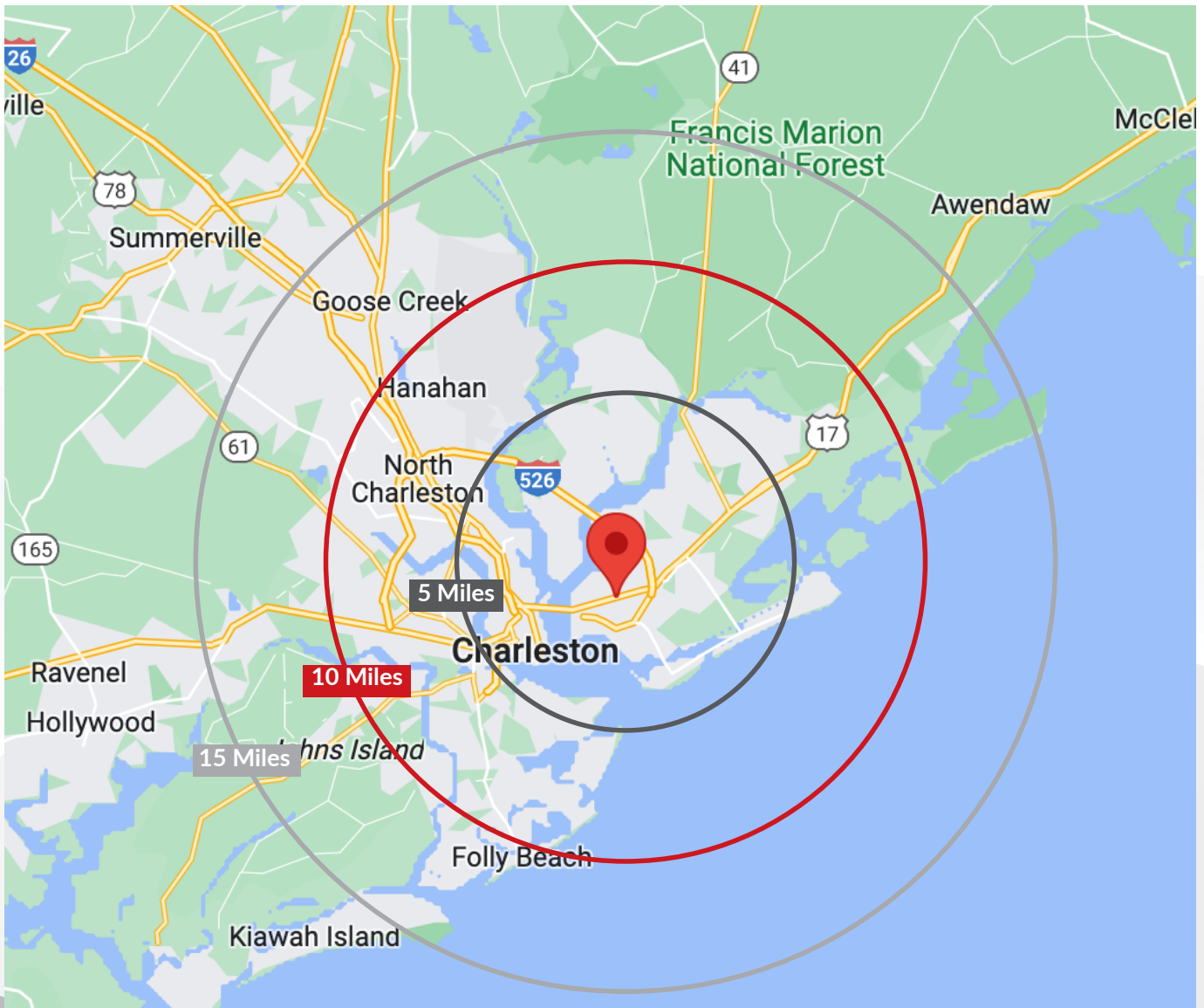
LANDMARK
ENTERPRISES
COMMERCIAL REAL ESTATE

www.landmark-enterprises.com

STAND ALONE OFFICE BUILDING **FOR SALE OR LEASE**

WITH EXCELLENT VISIBILITY

DISTANCE MAP



816 JOHNNIE DODDS BLVD. | MT. PLEASANT, SC 29464



LANDMARK
ENTERPRISES
COMMERCIAL REAL ESTATE

STAND ALONE OFFICE BUILDING **FOR SALE OR LEASE** WITH EXCELLENT VISIBILITY

AERIAL MAP



816 JOHNNIE DODDS BLVD. | MT. PLEASANT, SC 29464



LANDMARK
ENTERPRISES
COMMERCIAL REAL ESTATE