



Woodbend Plaza

11450 Compaq Center Drive





Woodbend Plaza

Newly renovated 8-story, 427,827 square foot Class A office building

- Tenant amenity center with a tenant lounge, conferencing, kitchen and game room
- Multiple conferencing rooms with a pre-function area that can seat anywhere from 6-125 people
- Large, efficient floor plates
- On-site property management and 24-hour security
- Close proximity to executive housing, hospitals, dining, shopping and entertainment
- Structured covered parking connected to the building via sky-bridge

Amenities Designed for Team Building

Tenant amenity center is designed to enhance company culture in the workplace

- Large open space with multiple gathering areas suitable for a variety of uses
- Collaborative work spaces
- Connectivity to TV's and WIFI
- Kitchen and pre-function area



Amenities Designed for Collaboration

Flexible meeting spaces designed to create synergy in the workplace

- Conferencing center with a mix of huddle rooms and larger conferencing rooms that can seat anywhere from 6-125 people
- Pre-function area
- Hi tech connectivity to TV's and WIFI



Amenities Designed to Unwind

Game room designed for tenants to relax, unwind, and take a break from the typical workday environment

- Pool Table and Foosball
- Connectivity to TV's and WIFI
- Lounge area and work spaces



Prime Location

Woodbend Plaza is conveniently located in the Houston Technology Corridor with easy ingress/egress to state Highway 249, Beltway 8, and Highway 290.



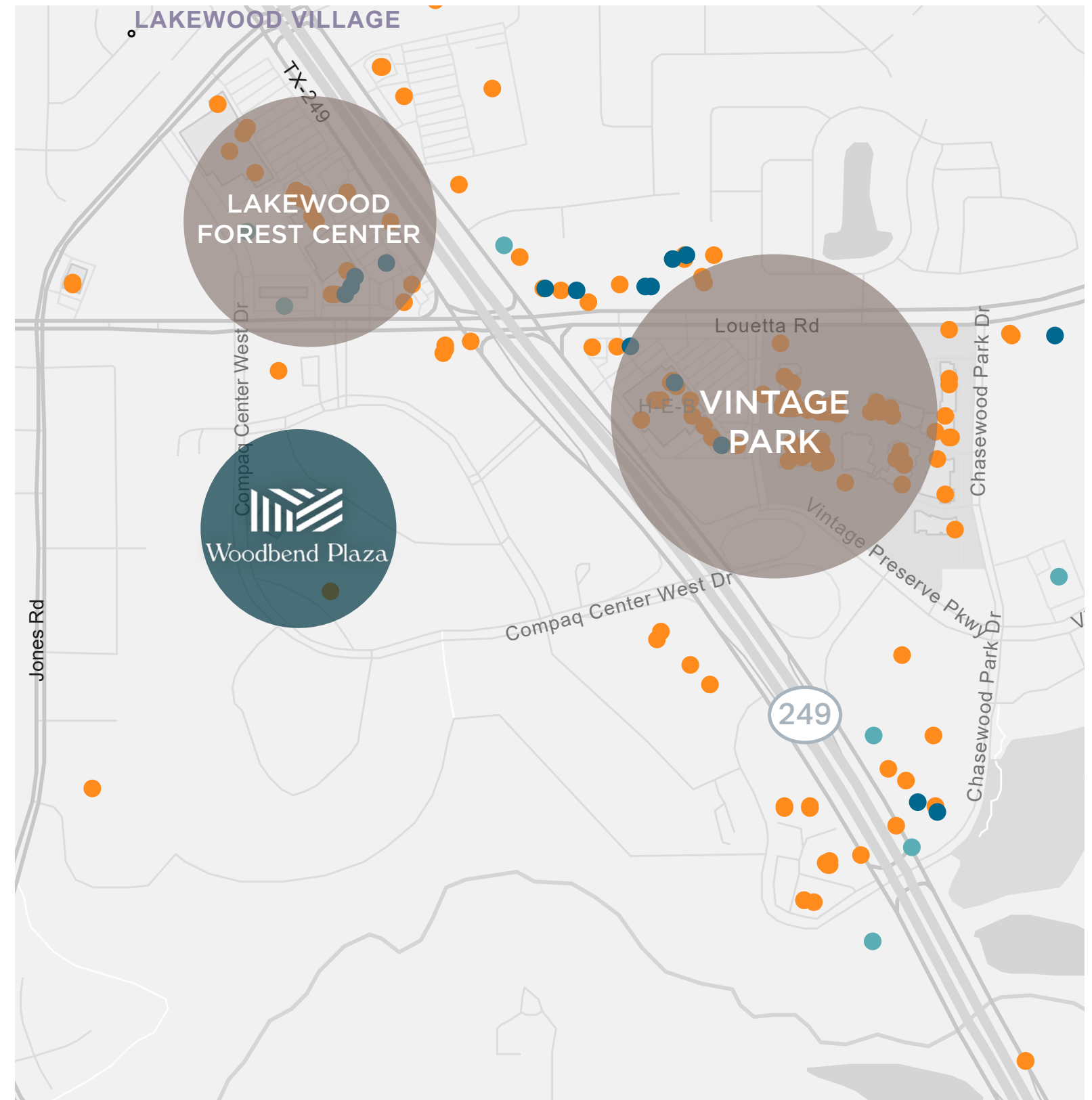
Surrounding Amenities

Located in the Champions neighborhood, home to many executives and a plethora of dining, shopping, and entertainment.

Vintage Park



Lakewood Forest Center



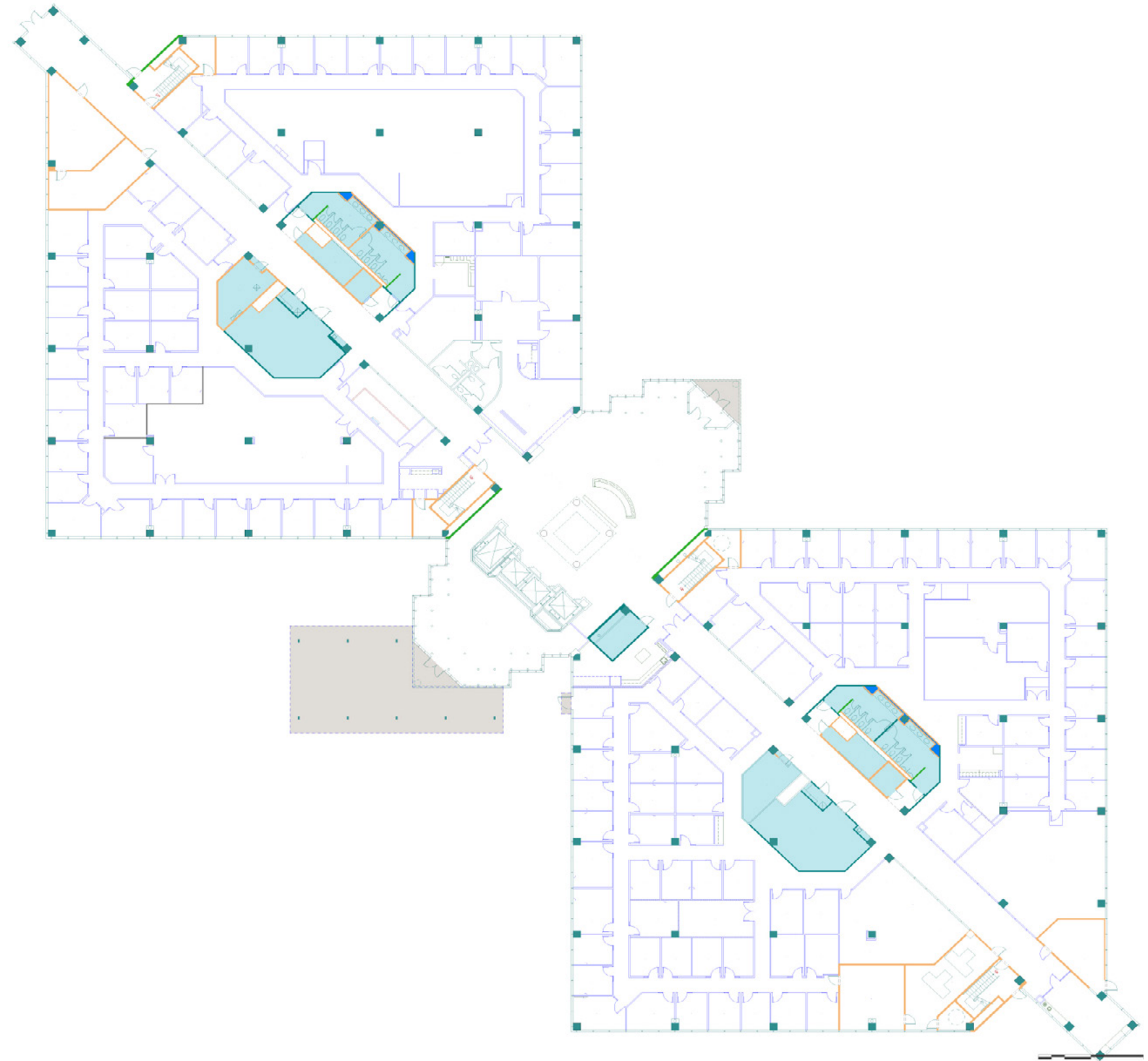
MAP LEGEND

- Restaurants
- Hotels
- Retail

Typical Floorplate

53,478 SF

Level 1



FOR LEASING INFORMATION

Michelle Wogan

713.270.3348

Michelle.Wogan@transwestern.com

Parker Burkett

713.407.8716

Parker.Burkett@transwestern.com

