

# 2000

## ALAMEDA

SAN MATEO, CA

SUITE 100  
16,989 ft<sup>2</sup>

SUITE 260  
4,478 ft<sup>2</sup>

ROGER FIELDS  
(650) 327-2014 OFFICE  
(650) 207-1610 CELL  
rfields@peninsulaland.com

LOIS QUILALANG  
(650) 327-2014 OFFICE  
(510) 798-0336 CELL  
lois@peninsulaland.com

PARKER FIELDS  
(650) 327-2014 OFFICE  
(650) 208-9979 CELL  
parker@peninsulaland.com





# PROPERTY HIGHLIGHTS

2000 ALAMEDA

SUITE 100 | 16,989 ft<sup>2</sup>

SUITE 260 | 4,478 ft<sup>2</sup>



Easy Access to Highways  
92, 280 & 101



13 Min Drive to SFO  
30 Min to SJC



Ample Parking



Central Peninsula  
Location



Near Amenities



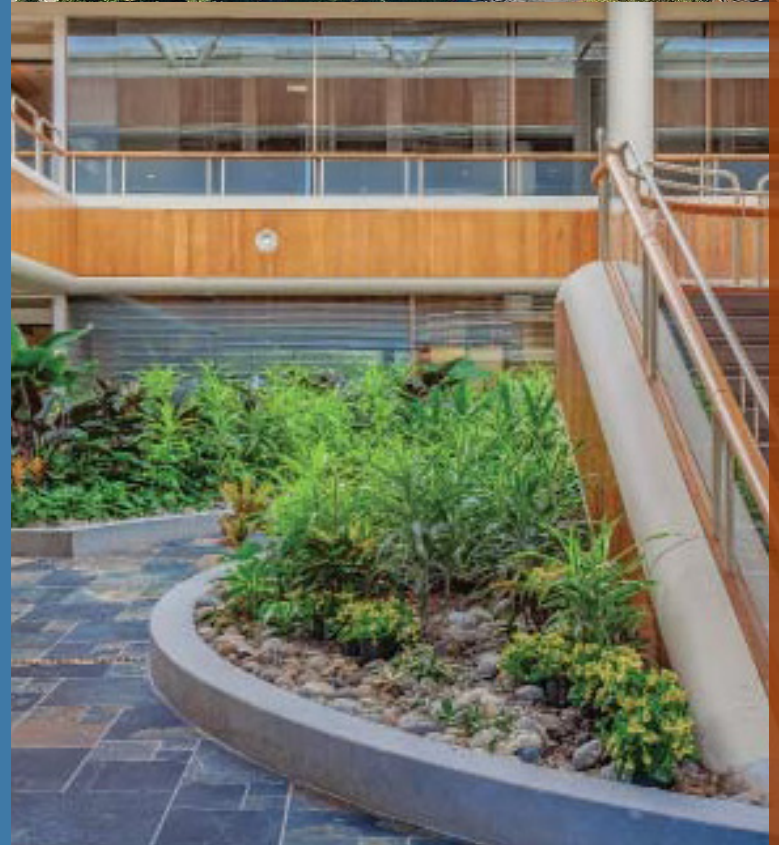
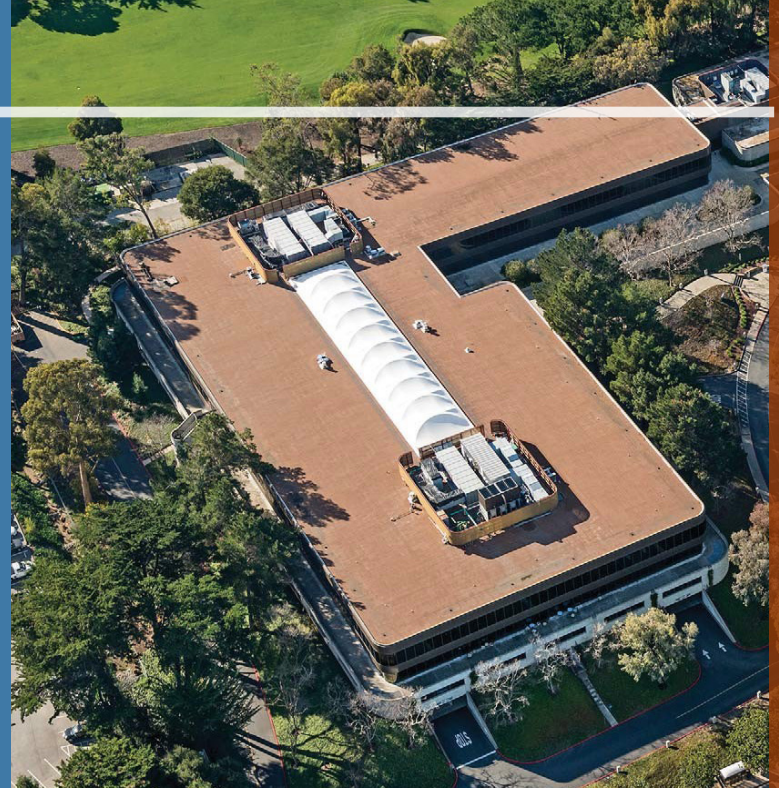
Property Manager on  
Site



LEED Gold Certified



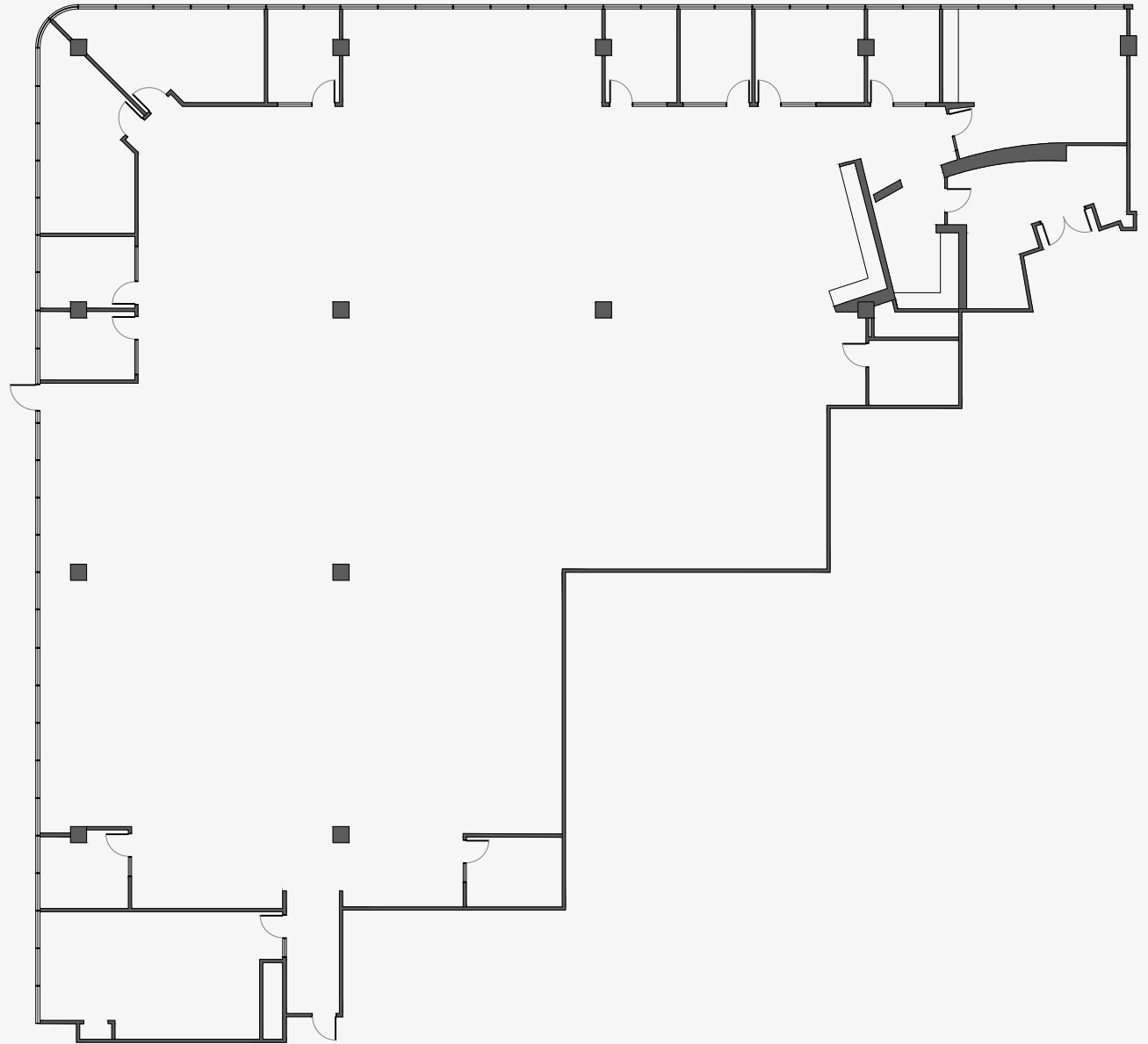
2 Stories Building



**FLOOR PLAN**  
SUITE 100

Area 16,989 ft<sup>2</sup>

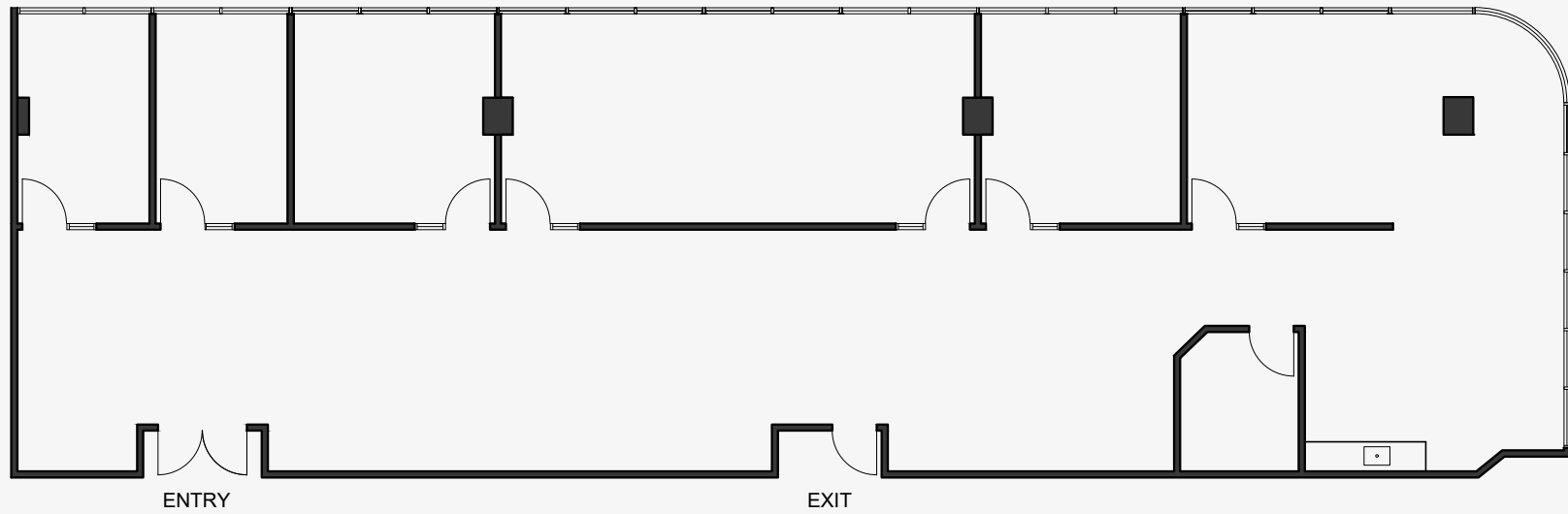
Parking ratio 4.0/1000



**FLOOR PLAN**  
SUITE 260

Area 4,478 ft<sup>2</sup>

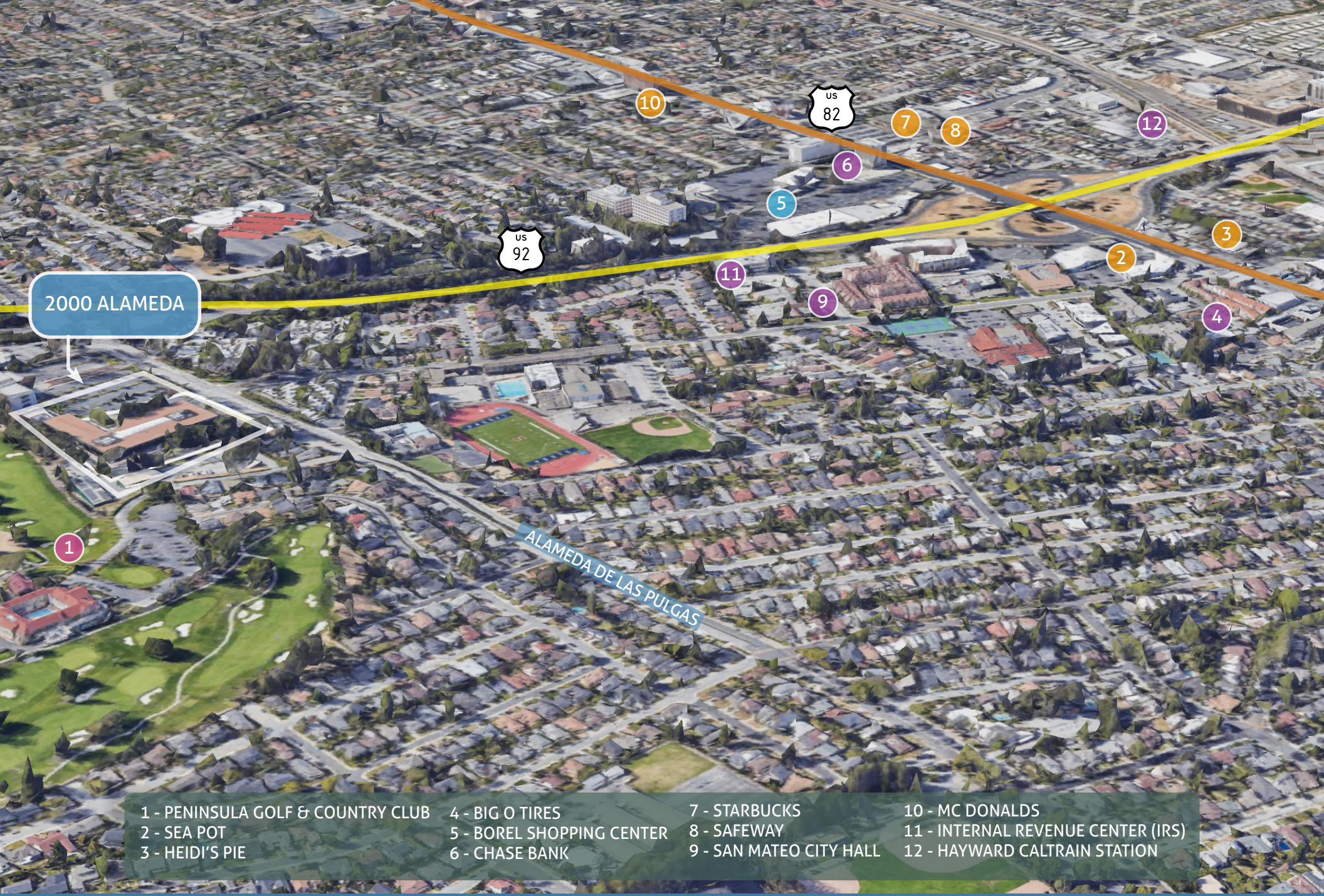
Parking ratio 4.0/1000











2000 ALAMEDA



ALAMEDA DE LAS PULGAS

- 1 - PENINSULA GOLF & COUNTRY CLUB
- 2 - SEA POT
- 3 - HEIDI'S PIE
- 4 - BIG O TIRES
- 5 - BOREL SHOPPING CENTER
- 6 - CHASE BANK
- 7 - STARBUCKS
- 8 - SAFEWAY
- 9 - SAN MATEO CITY HALL
- 10 - MC DONALDS
- 11 - INTERNAL REVENUE CENTER (IRS)
- 12 - HAYWARD CALTRAIN STATION

# Surrounding Amenities 2000 ALAMEDA

suite 100







# 2000

## ALAMEDA

SAN MATEO, CA

**FOR ADDITIONAL INFORMATION, PLEASE REACH  
OUT TO THE LISTING TEAM:**

[WWW.PENINSULALAND.COM](http://WWW.PENINSULALAND.COM)

### **ROGER FIELDS**

(650) 327-2014 OFFICE  
(650) 207-1610 CELL  
[rfields@peninsulaland.com](mailto:rfields@peninsulaland.com)

### **LOIS QUILALANG**

(650) 327-2014 OFFICE  
(510) 798-0336 CELL  
[lois@peninsulaland.com](mailto:lois@peninsulaland.com)

### **PARKER FIELDS**

(650) 327-2014 OFFICE  
(650) 208-9979 CELL  
[parker@peninsulaland.com](mailto:parker@peninsulaland.com)

suite 100

