



# Dunkin' Plaza - Brand NEW - Build To Suit

644 Park Ave, Worcester, MA 01603

## Property Details

This bustling location on Park Ave provides prominent signage, ample parking and a full plaza of successful businesses. This space can be divided into two separate units: 1,800 SF and 1,850 SF. Join other bustling businesses including: Dunkin', YATCO, The Black Rose Tattoo, & MUSE Barber Company in this high traffic location. Don't miss out!

**Price: \$20.00 /SF/YR**

- Heavy Daily Traffic Count
- Ample Parking
- Surrounded By Other Successful Businesses

View the full listing here: <https://www.loopnet.com/Listing/644-Park-Ave-Worcester-MA/30673504/>

Rental Rate:	\$20.00 /SF/YR
Min. Divisible:	1,800 SF
Property Type:	Retail
Property Subtype:	Storefront Retail/Office
Gross Leasable Area:	3,650 SF
Construction Status:	Proposed
Walk Score ®:	87 (Very Walkable)
Transit Score ®:	37 (Some Transit)
Rental Rate Mo:	\$1.67 /SF/MO

# Dunkin' Plaza - Brand NEW - Build To Suit

644 Park Ave, Worcester, MA 01603

## Listing space

1st Floor	Space Available:	1,800 - 3,650 SF
	Rental Rate:	\$20.00 /SF/YR
	Date Available:	Now
	Service Type:	Triple Net (NNN)
	Space Type:	Relet
	Space Use:	Retail
	Lease Term:	5 - 10 Years

3,650 square feet - Built to Suit - Prime Location on Park Ave Abutting Dunkin' and other Successful Businesses. Ample parking and prominent signage. Don't miss out!

# Dunkin' Plaza - Brand NEW - Build To Suit

644 Park Ave, Worcester, MA 01603

## Major Tenant Information

---

Tenant	SF Occupied	Lease Expired
Dunkin'	-	
MUSE Barber Co.	-	
The Black Rose Tattoo Company	-	
YATCO	-	

# Dunkin' Plaza - Brand NEW - Build To Suit

644 Park Ave, Worcester, MA 01603

## Location



# Dunkin' Plaza - Brand NEW - Build To Suit

644 Park Ave, Worcester, MA 01603

## Property Photos



DSC00568\_158451 (1)

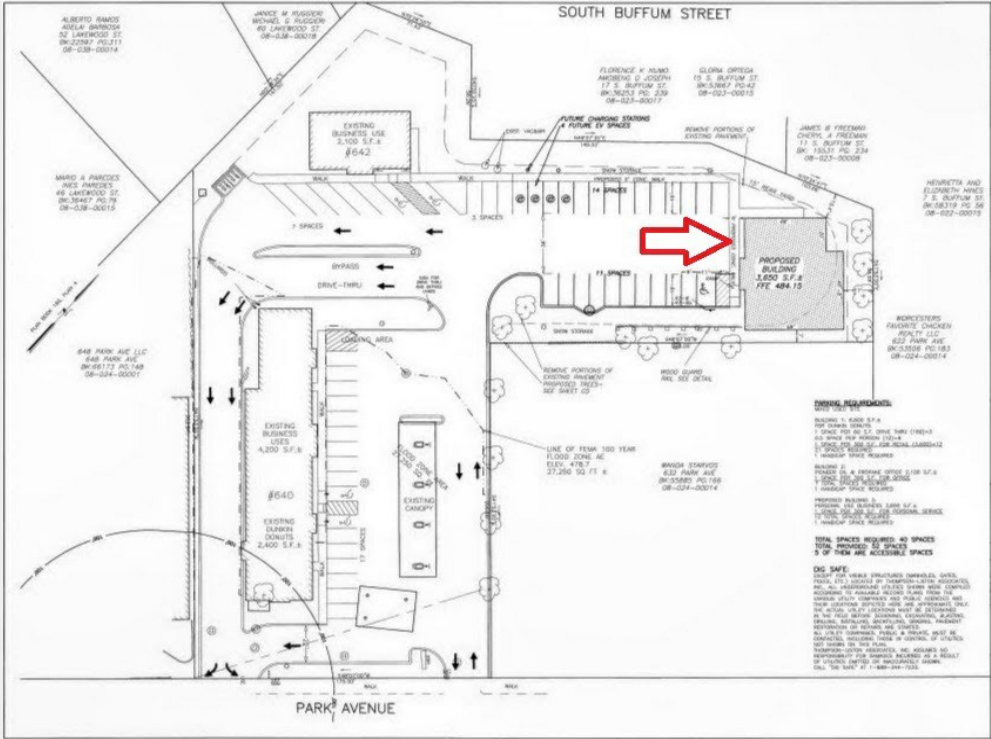


image-EDITx

# Dunkin' Plaza - Brand NEW - Build To Suit

644 Park Ave, Worcester, MA 01603

## Property Photos



image\_2



PXL\_20231228\_234857928 (1)

# Dunkin' Plaza - Brand NEW - Build To Suit

644 Park Ave, Worcester, MA 01603



**Brandon O'Neal**

[brandon.oneal@nemoves.com](mailto:brandon.oneal@nemoves.com)

(508) 795-7500

**Coldwell Banker  
Commercial NRT**

6 Park Ave, Suite 1  
Worcester, MA 01605



**NRT**