

PROFESSIONAL OFFICE SPACE WITH ON-SITE PARKING

NEWLY REMODELED SPACE ADJACENT TO I-496



[Click to see
suite 100 tour](#)



FOR LEASE

1000 W. St. Joseph Street,
Lansing, MI

**SPACE
AVAILABLE:**
Up to 9,945 SF

THOMAS JAMIESON, SIOR

Senior Vice President, Office Advisor
Direct: 517 319-9235
thomas.jamieson@martincommercial.com

ERIC F. ROSEKRANS, CCIM, CPM

Executive Vice President
Direct: 517 319-9209
eric.rosekrans@martincommercial.com



Martin

1111 Michigan Ave., Ste 300
East Lansing, MI 48823
martincommercial.com



Prime Modern Office Space Move-In Ready

This modern, 9,945 SF office building, remodeled in 2021, offers versatile spaces ready for immediate occupancy. With suites ranging from 2,400 to 5,000 SF and on-site parking, it's perfect for professional offices. The lower level features a large event space, team-building areas, and conference rooms, ideal for collaborative work environments. Located adjacent to I-496 and just minutes from downtown Lansing and major highways, this prime property provides convenience and accessibility for both employees and clients.

LEASE RATE:

LOWER LEVEL

\$12.00

PSF/YR, Full Service

SUITE 100 & 200

\$14.00

PSF/YR, Plus Utilities & Janitorial

PROPERTY INFORMATION



SIZE:
9,945 SF



LOWER LEVEL:
Big event Space



BUILT: 2001
Remodeled 2021



PARKING: 40
On-site spaces



ZONING:
Office



INTERSTATE:
1 Mile to I-96



CONDITION:
Move-in ready



FINISHES:
Modern



AREA INFORMATION

1 Minute

to I-496 Interchange

3 Minutes

to State Capitol

1.8 Miles

to Lansing Community College

4.5 Miles

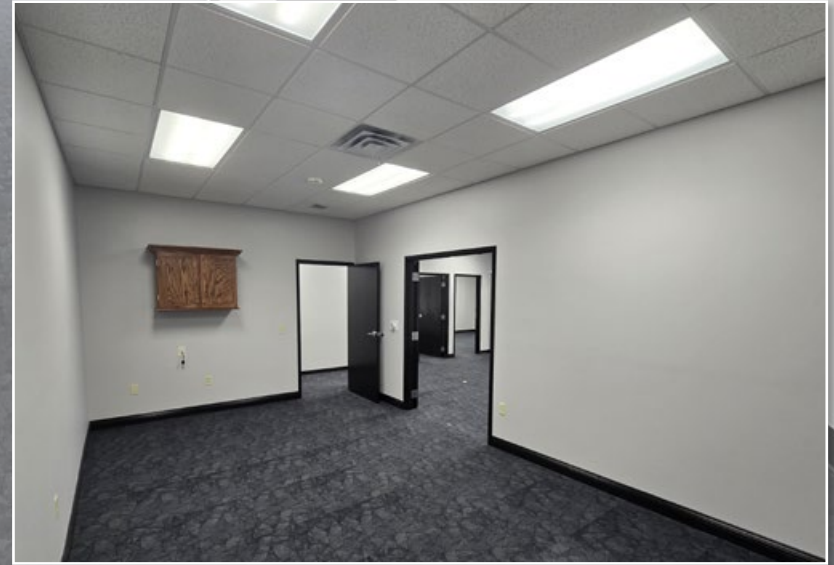
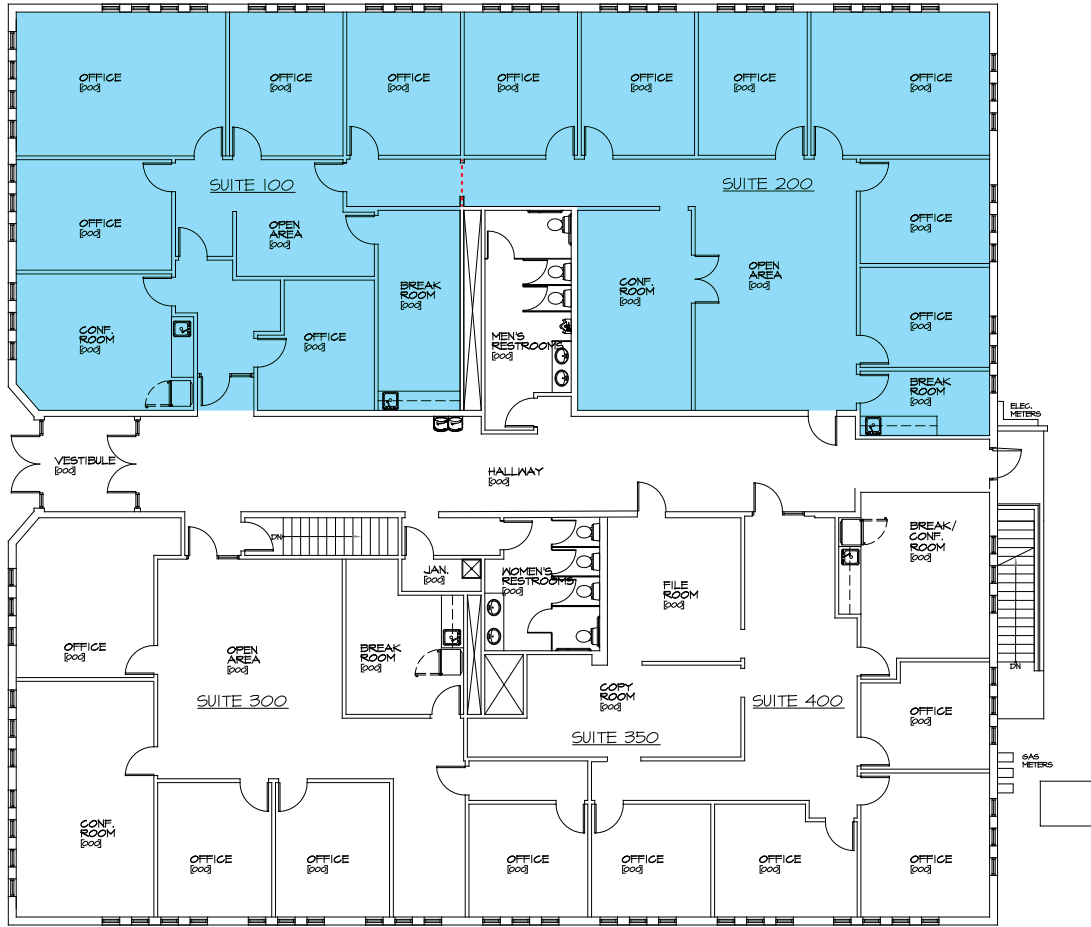
to Michigan State University

Minutes

to Capital Region International Airport, I-96, I-69, I-496 and downtown Lansing



FLOOR PLAN: FIRST LEVEL



FLOOR PLAN: LOWER LEVEL

