



7447 S CENTRAL AVENUE BEDFORD PARK, ILLINOIS

55,718 SF Available For Lease

PROPERTY FEATURES

- 55,718 SF available for lease
- 118,218 SF total building
- 4.47 acres
- 1,517 SF office
- 21' clear height
- 4 interior truck docks
- 22 parking spaces
- 400 amps; 277/480 volts
- 40' x 40' column spacing
- LED lighting
- Institutionally owned and managed
- 6B real estate taxes
- Available Immediately - Move in ready
- Lease price: Subject To Offer



Video Tour



MDH Partners



7447 S CENTRAL AVENUE

55,718 SF Available For Lease

BEDFORD PARK, ILLINOIS

7447 S. Central Avenue

Bedford Park, IL 60638



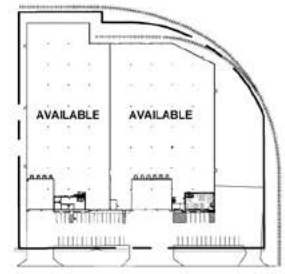
building information

one story office/warehouse

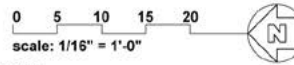
| | |
|--------------------|-------------|
| TENANT #1 | |
| office area: | ± 1,517 sf |
| warehouse area: | ± 54,201 sf |
| total tenant area: | ± 55,718 sf |
| parking | 29 spaces |
| rail docks | none |
| interior docks | 4 docks |

| | |
|--------------------|-------------|
| TENANT #2 | |
| office area: | ± 1,821 sf |
| warehouse area: | ± 60,679 sf |
| total tenant area: | ± 62,500 sf |
| parking | 18 spaces |
| rail docks | 2 docks |
| interior docks | 6 docks |

| | |
|---------------|--------------|
| BUILDING AREA | ± 118,218 sf |
|---------------|--------------|



key plan



THIS PLAN IS SCHEMATIC AND HAS BEEN PREPARED SOLELY ON SCOPE OF WORK PROVIDED BY OTHERS AND SUCH INFORMATION HAS NOT BEEN COMPLETELY FIELD VERIFIED FOR EXISTING CONDITIONS, CODES, ETC. AS SUCH, NO EXPRESS REPRESENTATION IS MADE NOR IS ANY TO BE IMPLIED AS TO THE ACCURACY THEREOF, AND THE PLAN SUBMITTED IS SUBJECT TO ALL GOVERNING REGULATORY CODES.



Steve Connolly, SIOR

630 693 0642

sconnolly@hiffman.com

Chris Gary, SIOR

630 693 0694

cgary@hiffman.com

7447 S CENTRAL AVENUE

55,718 SF Available For Lease

BEDFORD PARK, ILLINOIS



Video Tour



Steve Connolly, SIOR

630 693 0642

sconnolly@hiffman.com

Chris Gary, SIOR

630 693 0694

cgary@hiffman.com