

2357 Statesville Hwy - Multi-Family

Mooresville, NC 28115

EquityCP.com



For more information or to schedule a tour, please contact:

John Kindley

Broker

704.677.3048 Cell

Jkindley@EquityCP.com

Lewis Spivey

Broker

704.363.1401 Cell

Lspivey@EquityCP.com

For Sale

\$ 1,150,000

+/- 7 Acres - 48 Units Approved

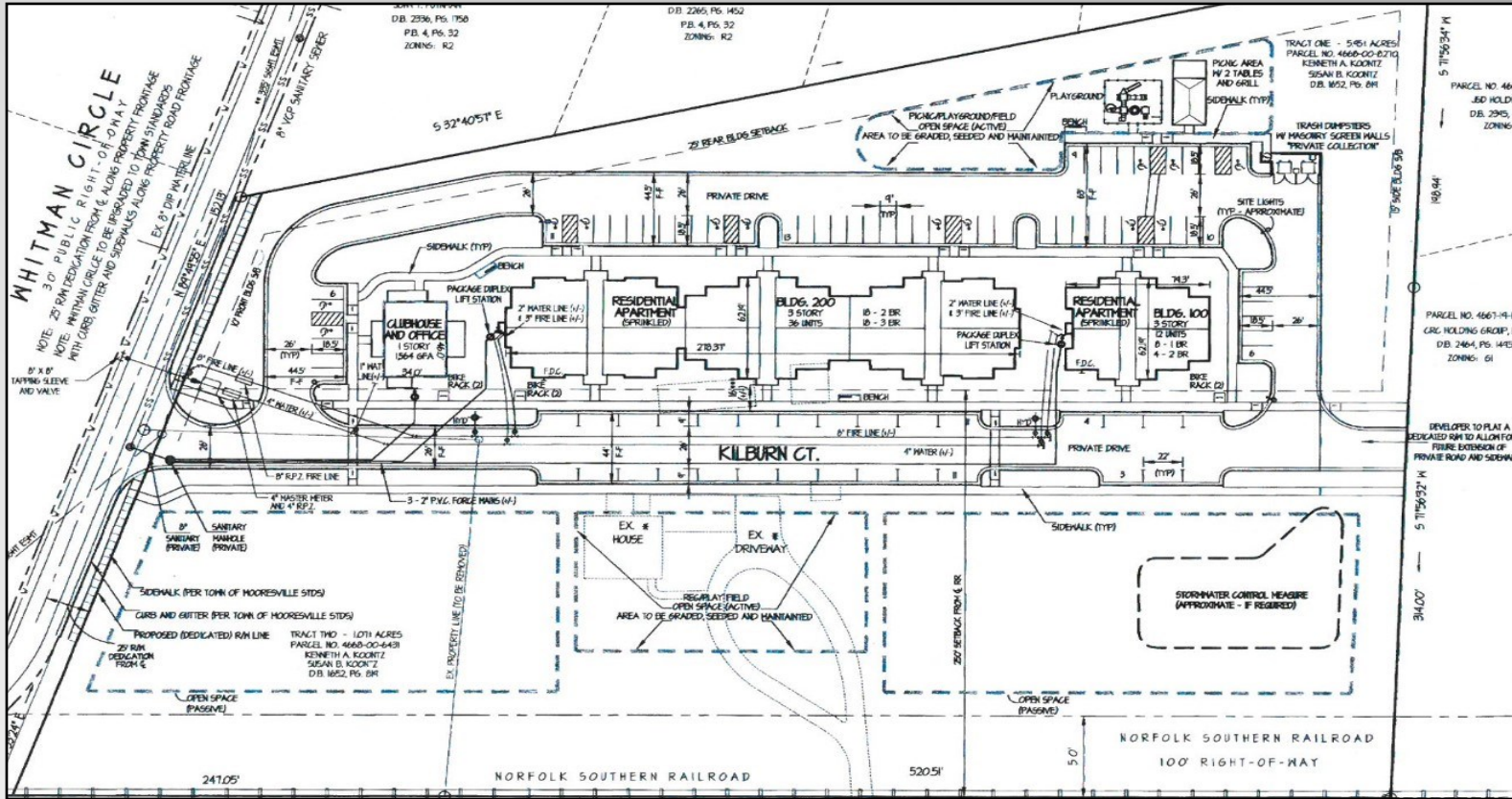
Approximately 7 Acres on Hwy 115 near Hwy 150 in Mooresville. This property is approved for **48 Residential Apartment Units!** Work force or standard apartments are allowed at this great location surrounded by business, retail, restaurants, and near downtown. Mooresville is a fast growing community and in need of residential housing just like this property can provide.

114 Morlake Dr.
Suite 104
Mooresville, NC

Office 704-799-9202
EquityCP.com



Equity Commercial Properties



Property Details

Price:	\$ 1,150,000
Acreage:	+/- 7 Ac
Status:	Available
Zoning:	TN
Proposed Use:	48 Units Multi-Family
Water/Sewer:	Mooresville Utilities
Nearby Intersection:	Hwy 115 & Hwy 150



114 Morlake Dr.
Suite 104
Mooresville, NC

Office 704-799-9202
EquityCP.com