



Property Description

Built in 2002 this one-story, flat roofed building is constructed of masonry, with glass fronts. Former home to the Department of Human Services, the available 22,584 square feet is currently built out with bullpen area and administrative offices, with wood trim, commercial tile and carpet throughout. Crossroads Office Center has ample parking, and high visibility. Pylon and fascia signage available. Space can be divided.

Property Highlights

- FOR LEASE - 22,584 SF (MOL)
- OFFICE OR INSTITUTIONAL
- Ample Parking
- Interstate 35 Access & Visibility
- Signage Available
- - Can Be Divided -

Offering Summary

Lease Rate: \$10.00 SF/yr (NNN)

Available SF: 22,584 SF

Building Size: 22,584 SF

Demographics

	1 Mile	5 Miles	10 Miles
Total Households	1,538	78,820	199,373
Total Population	4,469	214,669	514,101
Average HH Income	\$36,848	\$47,716	\$51,851

RICK PRITCHETT, CCIM

405.605.0825

rick@precorruffin.com

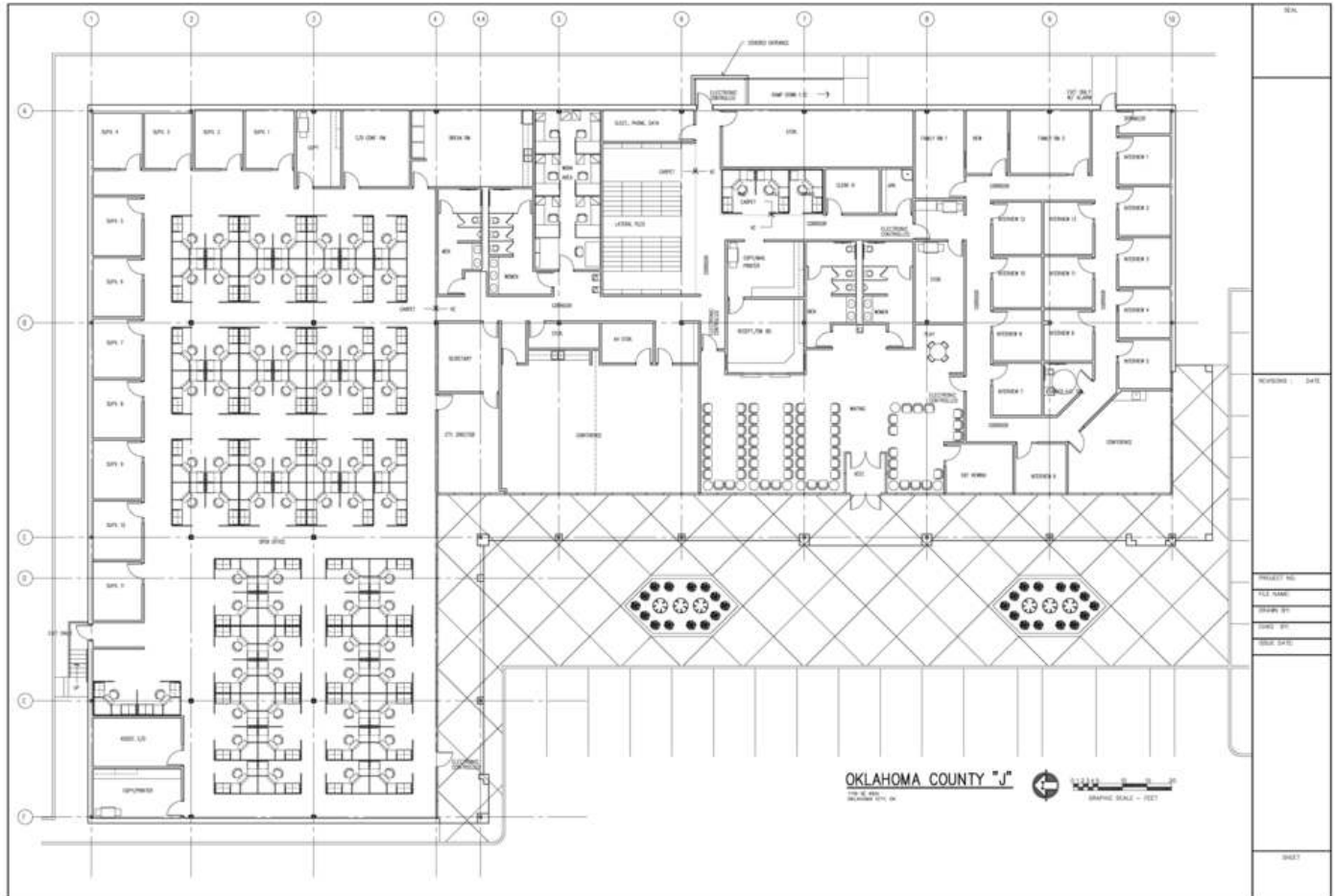


PRECORRUFFIN

For Lease

1115-1119 SE 66TH STREET

CROSSROADS OFFICE CENTER



RICK PRITCHETT, CCIM

405.605.0825

rick@precorruffin.com



PRECORRUFFIN

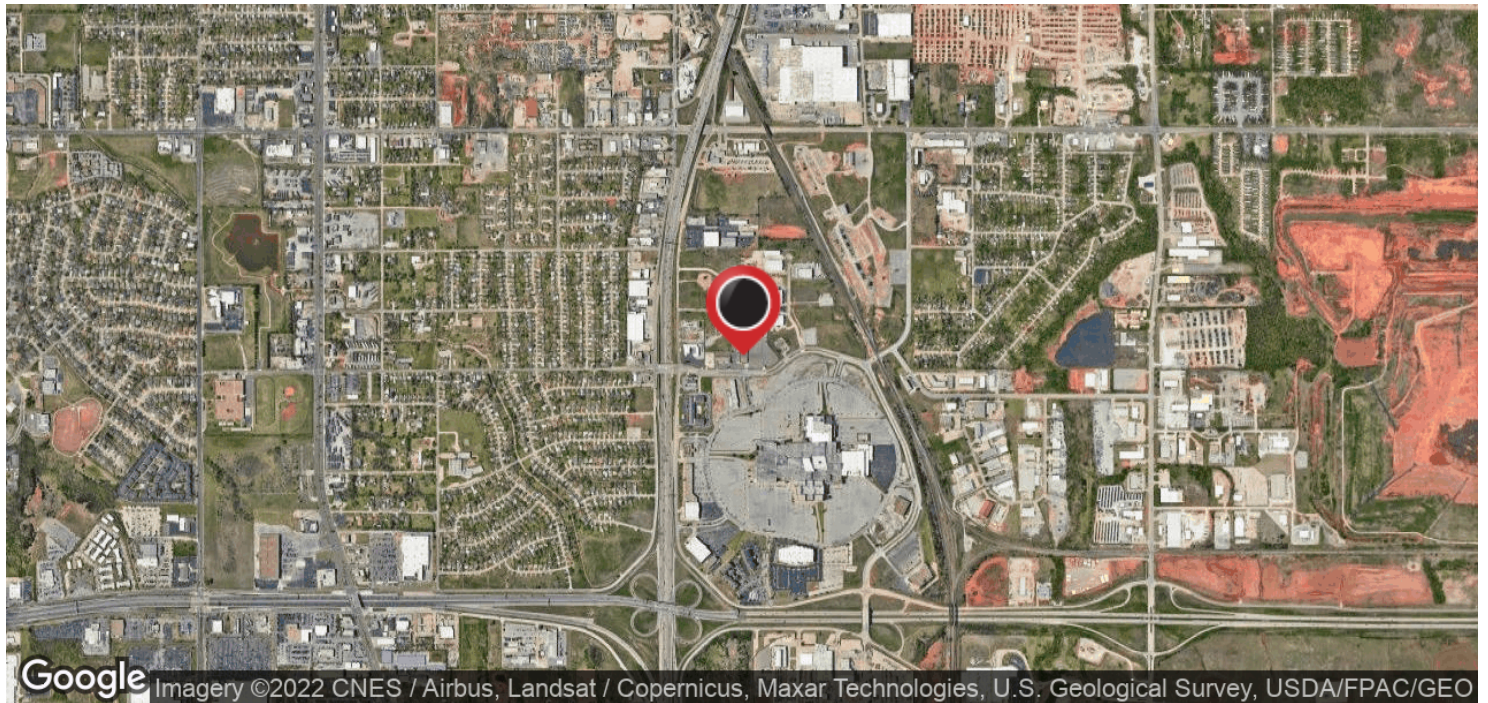
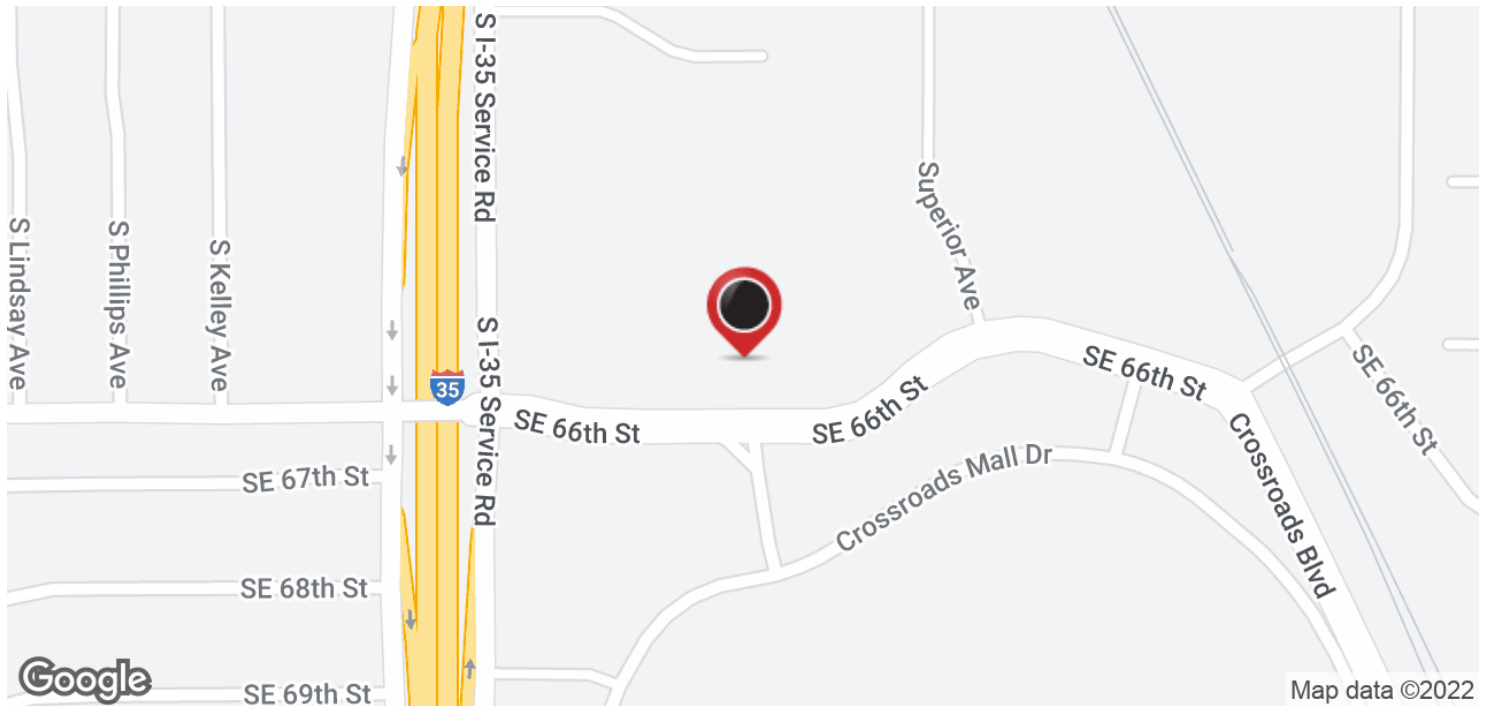
PRECOR RUFFIN | 825 N. BROADWAY, SUITE 300, OKLAHOMA CITY, OK 73102 | 405.605.0825 | PRECORRUFFIN.COM

The information above has been obtained from sources believed reliable. While we do not doubt its accuracy, PrecorRuffin, LLC has not verified it and makes no guarantee, warranty or representation about it. It is your responsibility to independently confirm its accuracy.

For Lease

1115-1119 SE 66TH STREET

CROSSROADS OFFICE CENTER



RICK PRITCHETT, CCIM

405.605.0825

rick@precorruffin.com



PRECORRUFFIN

PRECOR RUFFIN | 825 N. BROADWAY, SUITE 300, OKLAHOMA CITY, OK 73102 | 405.605.0825 | PRECORRUFFIN.COM

The information above has been obtained from sources believed reliable. While we do not doubt its accuracy, PrecorRuffin, LLC has not verified it and makes no guarantee, warranty or representation about it. It is your responsibility to independently confirm its accuracy.