

FOR LEASE

1525 Hendry St  
Fort Myers, FL 33916

# McCrorry Building

Downtown Historic Fort Myers

1525

FieldEdge

FieldEdge

FieldEdge

 CUSHMAN &  
WAKEFIELD

COMMERCIAL  
PROPERTY  
SOUTHWEST FLORIDA



# TABLE OF CONTENTS

3	Property Highlights
6	Floorplans
10	Building Amenities
11	Contact

# PROPERTY HIGHLIGHTS



**1525 HENDRY ST.**  
Downtown Fort Myers  
33916



**PRICE**  
\$12.00 NNN  
\$5.22 CAM



**PARKING**  
Multiple parking  
garages within  
walking distance



**BUILDING SIZE**  
±14,584 SF



**YEAR BUILT**  
1929



**SPRINKLER**  
Yes

Situated in the heart of Historic Downtown Fort Myers, this property enjoys close proximity to numerous amenities and benefits from vibrant foot traffic and a lively atmosphere.

# PROPERTY

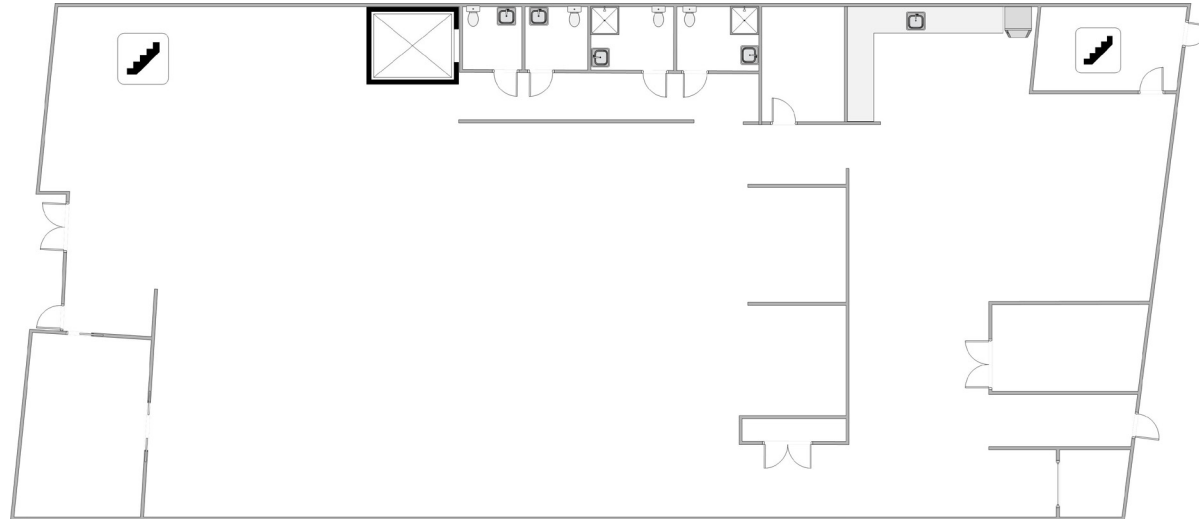


# PROPERTY

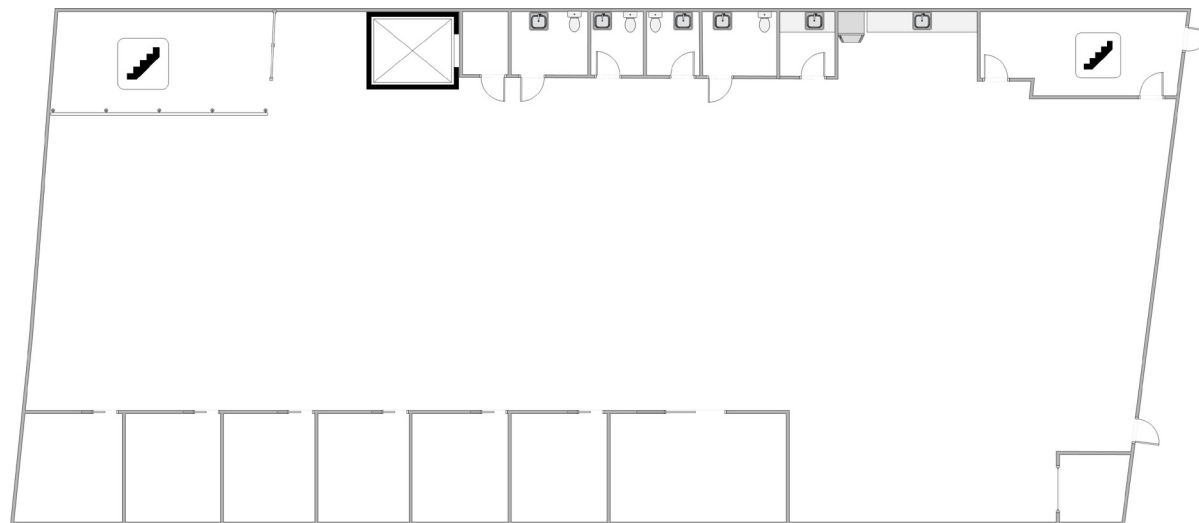


# FLOORPLANS

FLOOR 1



FLOOR 2



±14,584 SF

# 2

FLOORS

With original exposed brick walls amplified with modern design

# 71.2M

DOLLARS

\$71,251,441 million spent on food and alcohol within the surrounding 2 Miles in 2023

# 14.5K

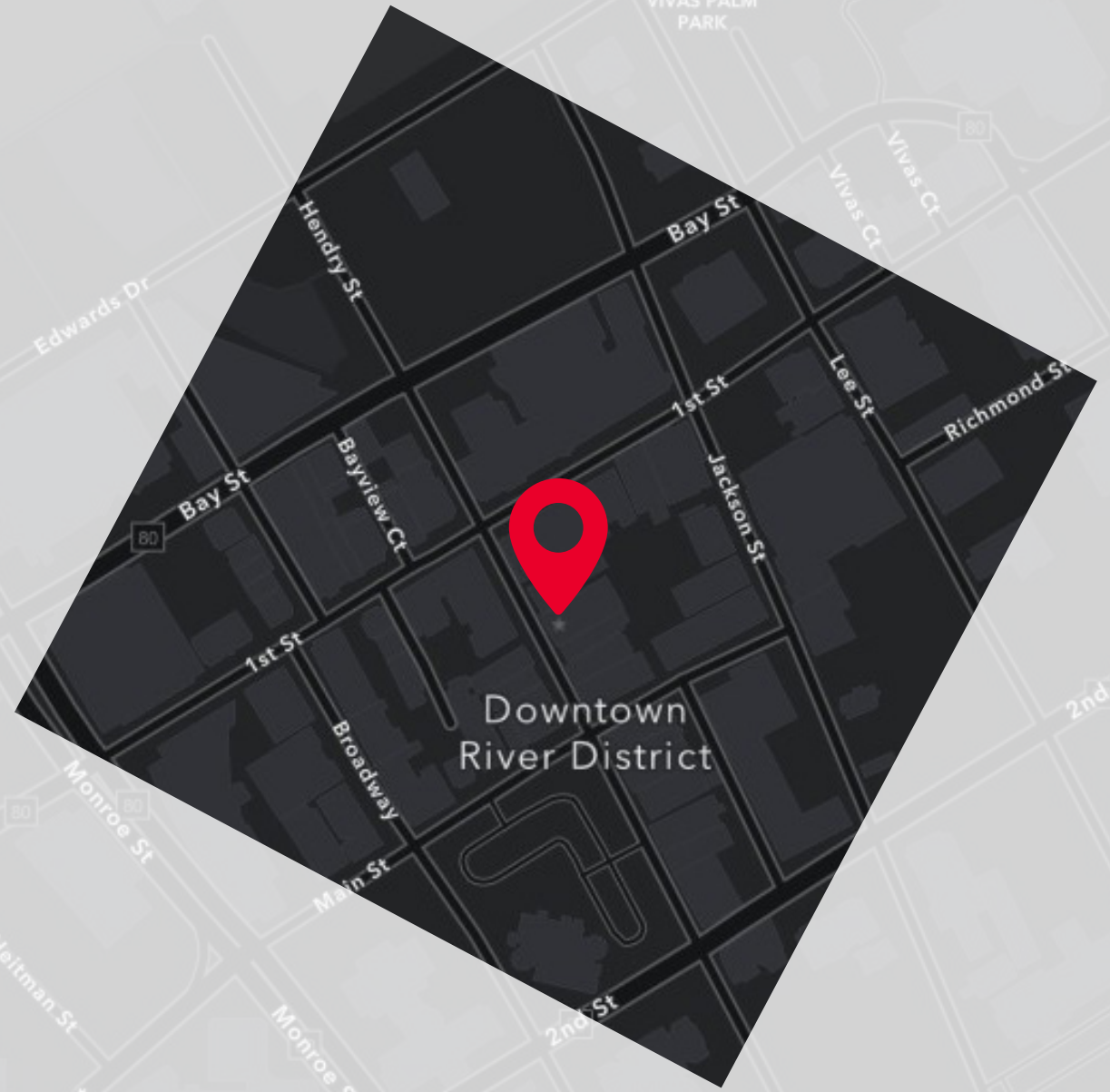
SQUARE FEET

+14,584 SF of usable space featuring elevator, bathrooms, kitchens, and open floorplans

# 240

HOTEL ROOMS

240 guest rooms and 1,000 + residential units within a mile radius under construction or in permitting





BAY STREET YARD

LUMINARY HOTEL & CO. AUTOGRAPH COLLECTION HOTELS

OXBOW FORT MYERS



CALOOSA SOUND

HOTEL INDIGO AN IHG HOTEL



Ford's GARAGE



SOCIAL HOUSE



CABOS CANTINA



10 TWENTY FIVE



The S6 Room

1525 Hendry St.  
Fort Myers, FL  
33916

CESUS






Nestled in the heart of Fort Myers' enchanting historic district, this remarkable commercial building, dating back to 1929, offers a unique blend of rich history and contemporary functionality.

Meticulously renovated in 2013, this property boasts a harmonious marriage of old-world charm and modern convenience.



# BUILDING AMENITIES



Prime Location:  
Situating in the heart of downtown Fort Myers, this property enjoys a prime location, ideal for businesses seeking exposure, accessibility, and the charm of the historical district.



Preserved Historical Aesthetic: The exterior reflects the building's historical significance, while the interior showcases a modern, functional design, perfectly suited for contemporary businesses.


Amenities:  
The building is equipped with 2 kitchens and shower facilities, making it a comfortable and convenient work environment for guests and employees alike.

Hospitality:  
Convenient accommodation options for business clients and visitors, enhancing the building's appeal and accessibility.

# WORK, SHOP, LIVE



Parking Convenience:  
Benefit from a nearby parking garage that offers ample parking space for employees and visitors.



Multi-Use Potential: Ideal for a variety of commercial purposes, offering flexibility and high income potential.

Investment Opportunity: Strong potential for revenue growth in a thriving commercial market.

Promising Growth:  
Fort Myers is home to a growing population and boasts great demographics, making it an excellent location for businesses seeking expansion opportunities.

**GARY TASMAN**  
CEO & Principal Broker  
239 489 3600  
[gtasman@cpswfl.com](mailto:gtasman@cpswfl.com)

**SHAWN STONEBURNER**  
Senior Director  
239 489 3600  
[sstoneburner@cpswfl.com](mailto:sstoneburner@cpswfl.com)

Cushman & Wakefield | Commercial property Southwest Florida Copyright 2024. No warranty or representation, express or implied, is made to the accuracy or completeness of the information contained herein, and same is submitted subject to errors, omissions, change of price, rental or other conditions, withdrawal without notice, and to any special listing conditions imposed by the property owner(s). As applicable, we make no representation as to the condition of the property (or properties) in question.

5220 Summerlin Commons Blvd  
Suite 500  
Fort Myers, FL 33907  
[cpswfl.com](http://cpswfl.com)



COMMERCIAL  
PROPERTY  
SOUTHWEST FLORIDA