

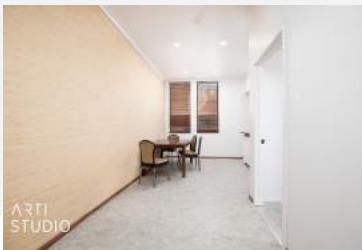
104 N Main
Richfield, UT 84701

MLS # 1993822

Offered at
\$1,175,000



For More Info Visit or Scan
helloarti.com/view/72556



0.12 ACRES | INDUSTRIAL OFFICE/RETAIL WAREHOUSE

Prime Commercial Building for Sale

Prime Commercial Building for Sale in the Heart of Richfield's Downtown Discover an exceptional investment opportunity with this iconic corner lot commercial building, a landmark of Richfield's bustling downtown main street. Spanning three stories above grade, this meticulously updated property combines the charm of historical architecture with modern amenities, offering a unique blend of business and residential spaces. Key Features: Location: Situated on a prominent corner lot in Richfield's vibrant downtown area, this building offers high visibility and foot traffic, perfect for retail and dining establishments. Versatile Spaces: The ground floor boasts a dynamic mix of restaurant/retail and office spaces, designed to cater to a diverse clientele. The second-floor features 10 office spaces, accommodating a variety of professional services. The third-floor houses 4 residential apartment units, offering serene living spaces amidst the downtown hustle. Additional Incom...



DONAVAN ALLEN

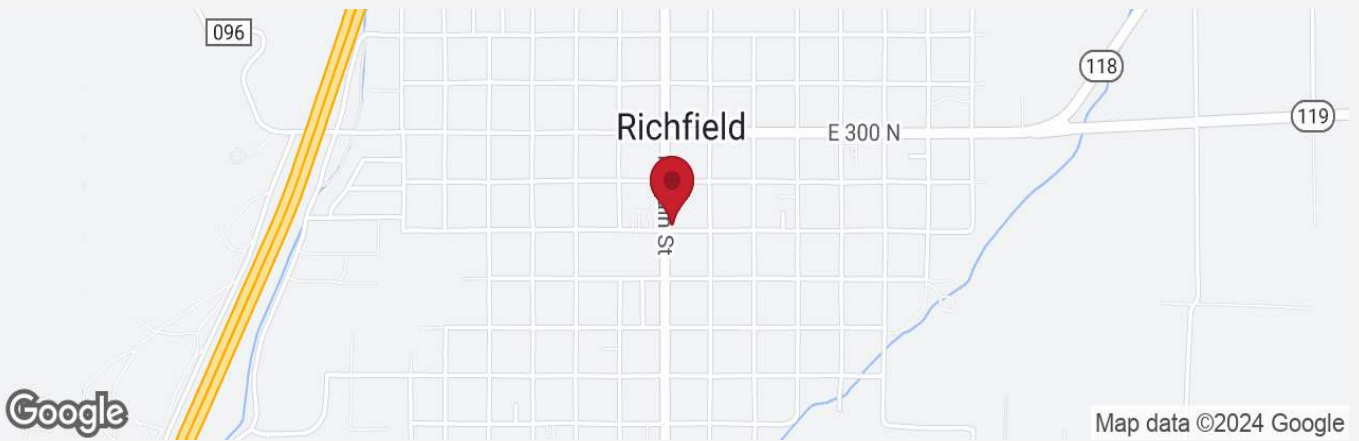
Realtor® 11815190-SA00

+1435 893 1289

donavanallen@hotmail.com



Call today for a private showing
+1 435 893 1289



LOOKING TO BUY A HOME?

HERE IS A **FREE** APPRAISAL
TO GET YOU STARTED!

[LEARN MORE >](#)

*Free appraisal limited to a \$500 value. No cash value or cash refunds on the difference. Typically, this lender credit ranges from \$400 to \$500 depending on which loan you qualify for. This credit is ONLY available for applicants whose subject property is in Utah or Arizona. Applicants must present coupon to the Sun American Mortgage loan officer at time of application. Only loans closed and funded by Sun American Mortgage are available to receive this lender credit. Offer expires on 12/31/2021.



**SUN AMERICAN
MORTGAGE**

 NMLS# 160265 | UT Lic# 9211514