

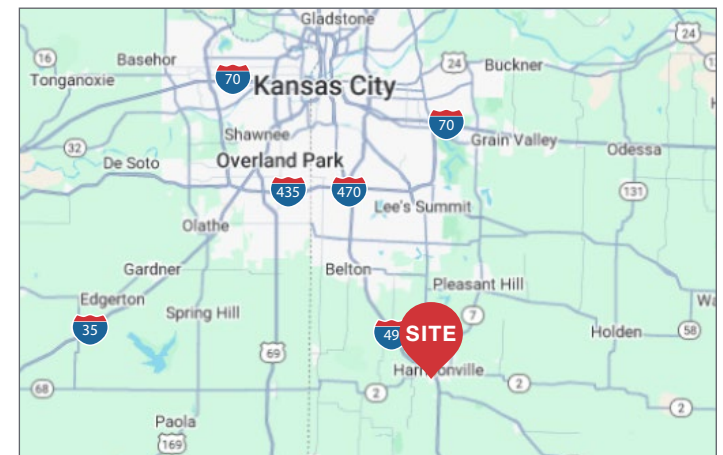


1700 Anaconda Road
Harrisonville, Missouri



Property Features

- ± 10,800 SF Freestanding Service Building with Yard
- ± 1,565 SF Office – recently remodeled
- Approx. 1.71 acre site
- Four (4) 12'x14' Drive-in doors and three (3) dock-high doors
- Fenced and gated outside storage
- Lease Rate: \$7,875.00 per month Net



Location Aerial

1700 Anaconda Rd | Harrisonville, Missouri

NAIHeartland



Proximity

- I-49 - 0.7 miles = 2 mins
- MO-291 - 2.1 miles = 6 mins
- MO-58 - 15.8 miles = 15 mins
- MO-150 - 19.6 miles = 19 mins

NO WARRANTY OR REPRESENTATION, EXPRESS OR IMPLIED, IS MADE AS TO THE ACCURACY OF THE INFORMATION CONTAINED HEREIN, AND THE SAME IS SUBMITTED SUBJECT TO ERRORS, OMISSIONS, CHANGE OF PRICE, RENTAL OR OTHER CONDITIONS, PRIOR SALE, LEASE OR FINANCING, OR WITHDRAWAL WITHOUT NOTICE, AND OF ANY SPECIAL LISTING CONDITIONS IMPOSED BY OUR PRINCIPALS NO WARRANTIES OR REPRESENTATIONS ARE MADE AS TO THE CONDITION OF THE PROPERTY OR ANY HAZARDS CONTAINED THEREIN ARE ANY TO BE IMPLIED.

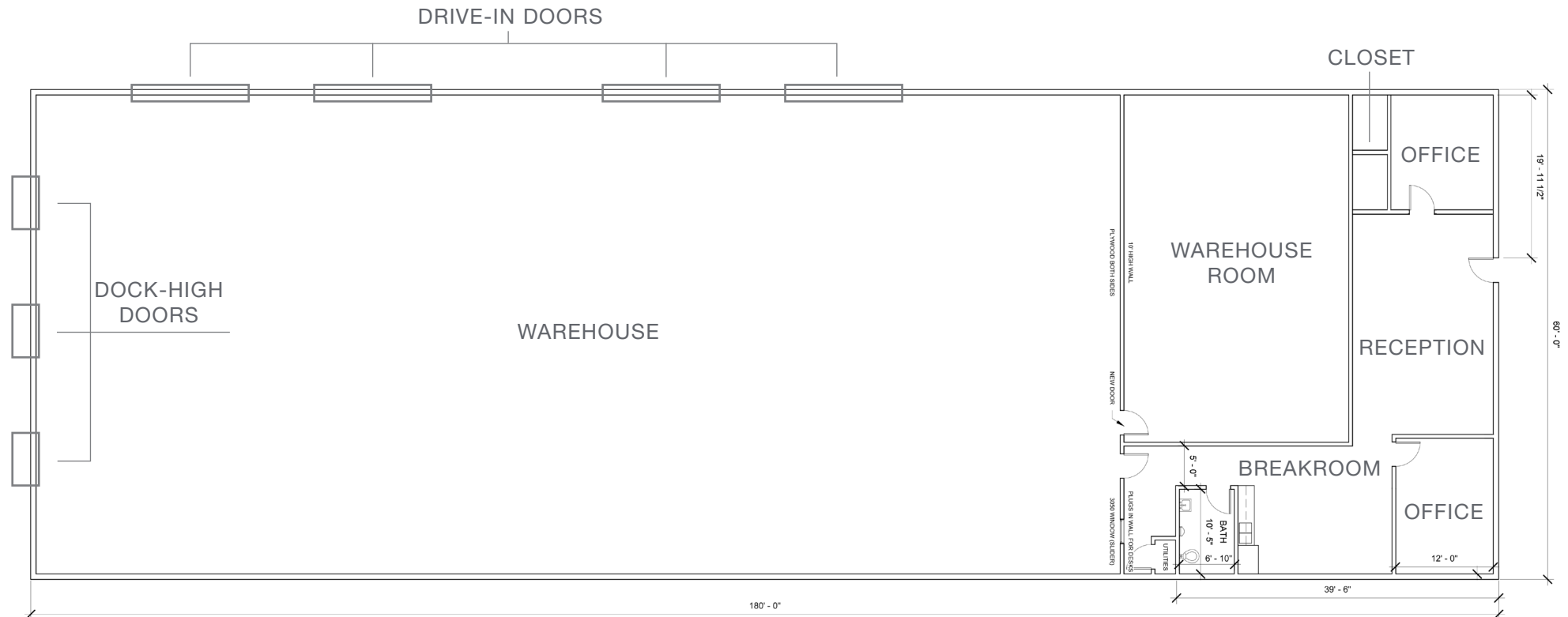
For more information:

Joe O'Neill, CCIM

+1 913 890 2010 • joe@nai-heartland.com

Floor Plan

1700 Anaconda Rd | Harrisonville, Missouri



NO WARRANTY OR REPRESENTATION, EXPRESS OR IMPLIED, IS MADE AS TO THE ACCURACY OF THE INFORMATION CONTAINED HEREIN, AND THE SAME IS SUBMITTED SUBJECT TO ERRORS, OMISSIONS, CHANGE OF PRICE, RENTAL OR OTHER CONDITIONS, PRIOR SALE, LEASE OR FINANCING, OR WITHDRAWAL WITHOUT NOTICE, AND OF ANY SPECIAL LISTING CONDITIONS IMPOSED BY OUR PRINCIPALS NO WARRANTIES OR REPRESENTATIONS ARE MADE AS TO THE CONDITION OF THE PROPERTY OR ANY HAZARDS CONTAINED THEREIN ARE ANY TO BE IMPLIED.

For more information:

Joe O'Neill, CCIM

+1 913 890 2010 • joe@nai-heartland.com

Property Photos

1700 Anaconda Rd | Harrisonville, Missouri

NAIHeartland



NO WARRANTY OR REPRESENTATION, EXPRESS OR IMPLIED, IS MADE AS TO THE ACCURACY OF THE INFORMATION CONTAINED HEREIN, AND THE SAME IS SUBMITTED SUBJECT TO ERRORS, OMISSIONS, CHANGE OF PRICE, RENTAL OR OTHER CONDITIONS, PRIOR SALE, LEASE OR FINANCING, OR WITHDRAWAL WITHOUT NOTICE, AND OF ANY SPECIAL LISTING CONDITIONS IMPOSED BY OUR PRINCIPALS NO WARRANTIES OR REPRESENTATIONS ARE MADE AS TO THE CONDITION OF THE PROPERTY OR ANY HAZARDS CONTAINED THEREIN ARE ANY TO BE IMPLIED.

For more information:

Joe O'Neill, CCIM

+1 913 890 2010 • joe@nai-heartland.com