

FOR LEASE

1,595SF, 2,982SF, 3,584SF, 7,928SF, Up to 7,966SF
2 Outlots For Lease

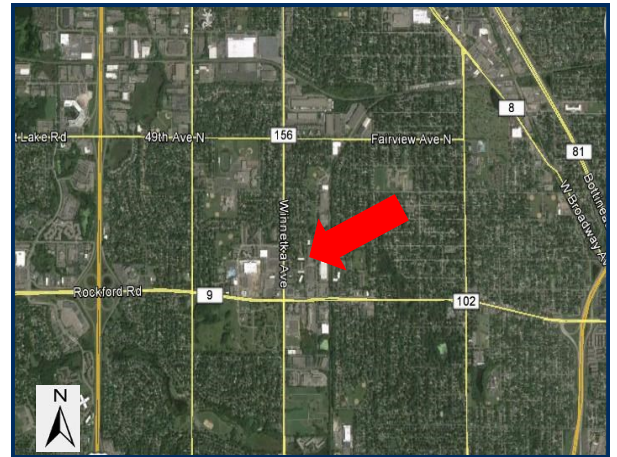
WINNETKA SHOPPING CENTER

4301-4471 Winnetka Avenue North
NEW HOPE, MINNESOTA 55428



LOCATED ON THE NORTHWEST CORNER OF WINNETKA & 42ND AVENUE

- Prime retail! Located in dense retail trade area and adjacent to Hy-Vee
- 2 outlots available (one drive thru)
- Available inline: 1,595SF up to 7,966SF
- 2024: \$5.19PSF (CAM \$2.53/RE \$2.66)
- Zoning: City Center, Pylon: Signage
- Parking Spaces: 543
- Tenants: Unique (a subsidiary of Saver's, Inc.), Dollar Tree, CSL Plasma, Salon Centric, Boost, Panda Buffet, Laundromat, Hair Salon, Community Medical Services, Hispanic Grocery
- Demographics:



	<u>1 MILE</u>	<u>3 MILES</u>	<u>5 MILES</u>
Population	11,762	96,838	252,334
Median Age	39	39	39
Average HH Income	\$70,770	\$77,294	\$76,534
Median HH Income	\$73,269	\$69,762	\$67,495



DIEHL & PARTNERS

Real Estate Brokerage, Consulting & Development

FOR MORE INFORMATION, CONTACT:

Lisa L. Diehl, CCIM, CPM

(612) 508-6410

Lisa.Diehl@CloseTheDiehl.com

