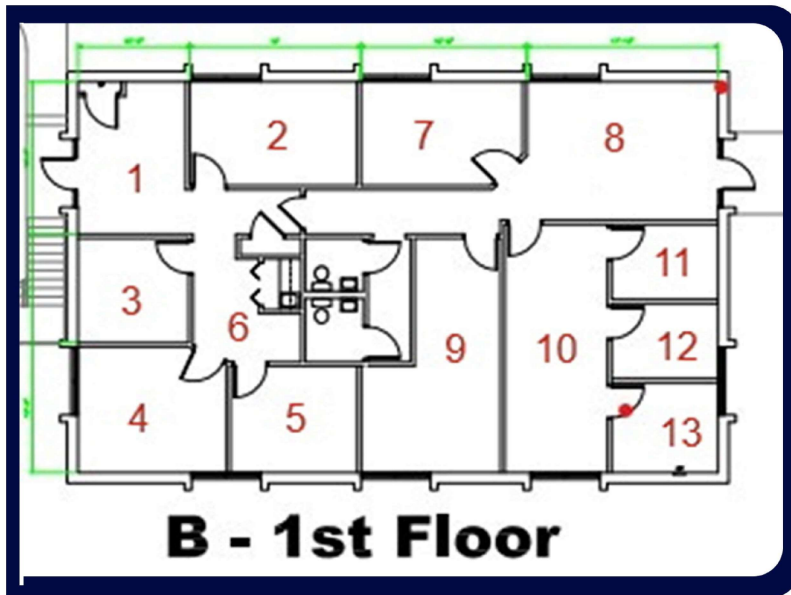


I FOR LEASE

1120 SOUTH POINTE PROPERTIES



B - 1ST FLOOR

This suite is approximately 2232 sqft. It has an entrance from the courtyard and another from the side parking area. Parking is right at the doors. It has private restroom and kitchenette.

BLD A AREA	APPROXIMATE SIZE	NARRATIVE
------------	------------------	-----------

1	14'8 x 10'4	This is an area for reception or possibly a break-area
2	15'7 x 9'11	Office
3	9'11 x 10'4	Small office
4	12'0 x 13'10	Executive office
5	12'1 x 9'8	Office
6	9'8	Kitchenette
7	15'1 x 9'8	Office
8	17'10 x 13'3	Reception/ Receiving
9	22'4 x 8'8	Office, workroom, storage, Larger area is 13'11 x 9'8
10	9'6 x 23'10	Work area in front of 3 small offices
11	9'11 x 7'2	Small tech office
12	9'11 x 7'2	Small tech office
13	9'11 x 8'6	Small tech office

1120 SOUTH POINTE PROPERTIES, LLC
 1120 S Pointe Parkway
 Shreveport, LA 71105

Greg.teeters@outlook.com
 318-573-3892