



Avison Young - Raleigh-Durham | 5440 Wade Park Boulevard, Suite 200 | Raleigh, NC 27607

FOR SALE

501 Eastowne Drive, Suite 265

Chapel Hill, NC 27514

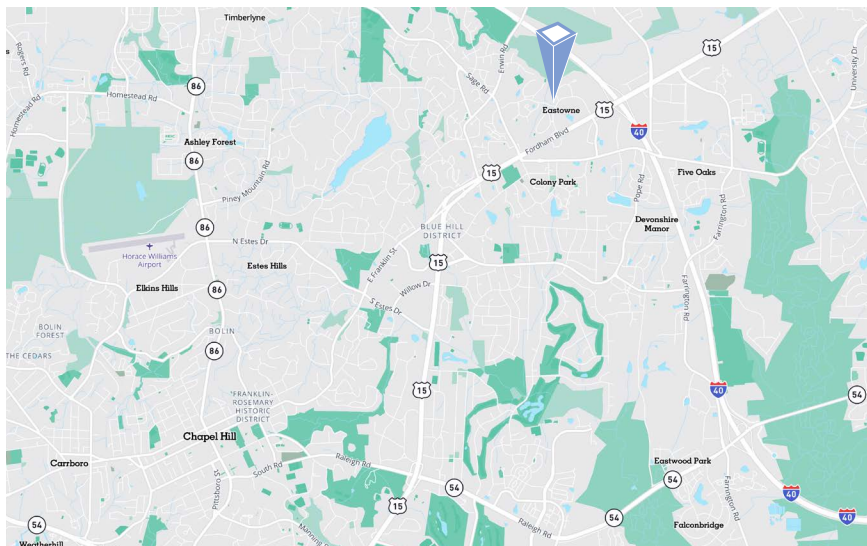
**AVISON
YOUNG**

Property highlights

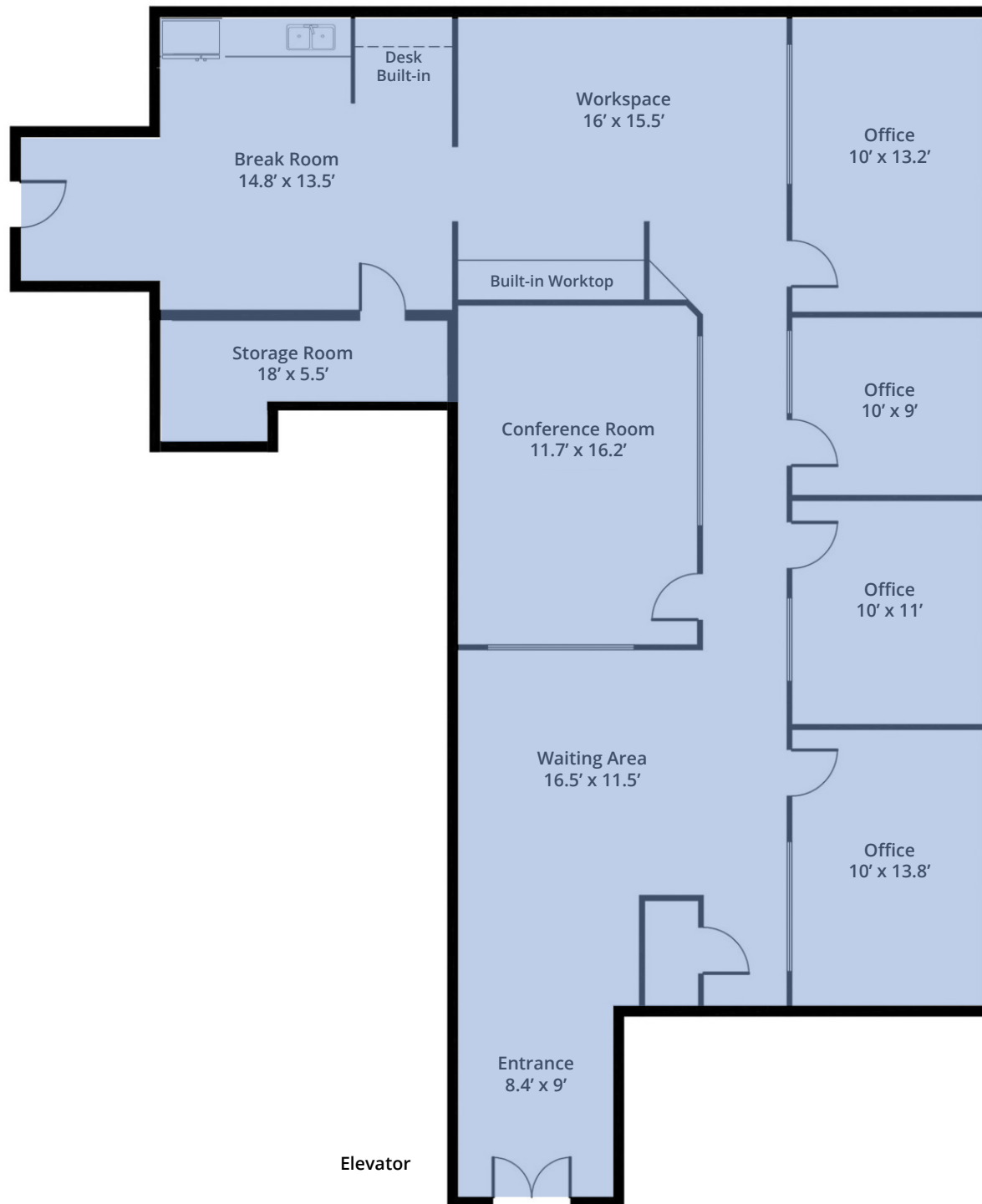
- Office condo for sale
- Condo includes waiting area, conference room, four offices with windows, break area and multi-purpose area
- Partial covered parking and secured building access
- Located within Eastowne Office Park
- Convenient to I-40, Wegmans and branch banking
- UOA quarterly dues \$1,493.91

Offering Summary

Sale Price:	\$585,000
Available SF:	2,064 sf
Year Built:	2005



Floor Plan



AVISON
YOUNG



Photos

Demographics

132,812
Total population
within a five-mile
radius

11,268
Total businesses
within a five-mile
radius

55,950
Total employees
within a five-mile
radius

60,823
Households
within a five-mile
radius

\$168,814
Avg. hh income
within a three-mile
radius

\$594,637
Avg. house value
within a three-mile
radius

Let's talk.

Bill Aucoin

Vice President, Sales & Leasing

D 919 913 1101

bill.aucoin@avisonyoung.com



Avison Young - Raleigh-Durham
5440 Wade Park Boulevard, Suite 200 | Raleigh, NC 27607

© 2025. Avison Young - Raleigh-Durham. Information contained herein was obtained from sources deemed reliable and, while thought to be correct, have not been verified. Avison Young - Raleigh-Durham does not guarantee the accuracy or completeness of the information presented, nor assumes any responsibility or liability for any errors or omissions therein.

**AVISON
YOUNG**
