

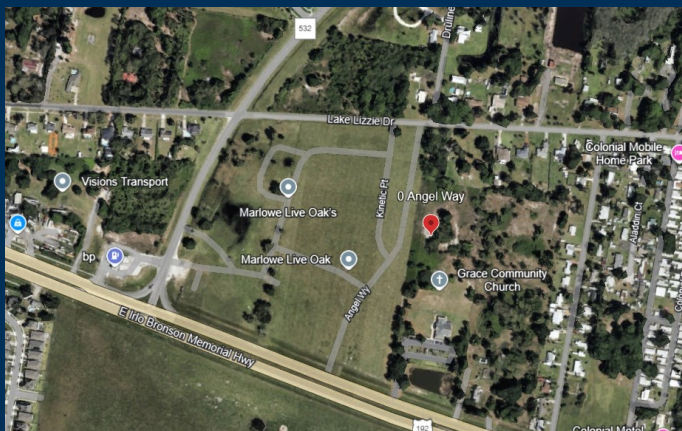
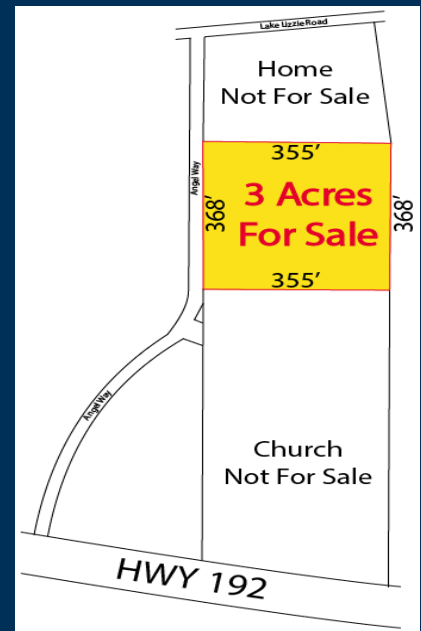
# Property For Sale / Saint Cloud

0 ANGEL WAY, SAINT CLOUD, FL 34771

**\$1,200,000.00**

3 +/- acre property just off Nova Road and US 192 in St. Cloud, Florida. Property zoning; Community Center Perimeter (CCP), Osceola County. Newly opened apartment complex across the street and much development in the immediate area. Easy access to Orlando International Airport, Melbourne and Lake Nona. Community Center Perimeter Zoning allows for many uses including: Multi-Family, Office, Retail, Assisted Living Facility, Day Care, Veterinarian Clinic, Self-Storage, Restaurant and More.

- Permitted uses include: Multi-family, Restaurant, Day Care, Assisted Living, Veterinary Clinic, Retail, Fitness Gym, Houses of Worship & More
- Water & sewer nearby
- 3 +/- Acre Property; Lot Dimensions 368' x 355'
- Easy access to Orlando International Airport, Melbourne & Lake Nona
- Potential flexibility on lot size
- Flood Zone X



Tim St. Gordon | BROKER  
Florida Realty Results, LLC  
Email: [tim@myfloridamove.com](mailto:tim@myfloridamove.com)  
Cell: 407-873-7750



Jennifer A. Davis, PA | REALTOR®  
Florida Realty Results, LLC  
Email: [jdavislifestyles@aol.com](mailto:jdavislifestyles@aol.com)  
Cell: 407-361-1072