



Tech Sublease with Water Views in South Financial District 160 Spear Street | San Francisco, CA

- Partial 10th Floor - 11,685 RSF
- Available Immediately
- Term through February 28, 2025

**Photos do not reflect current layout and are for illustrative purposes only.*

Kellam Nelson

+1 415 288 7886

kellam.nelson@colliers.com

CA License No. 01903896

Annie Fu

+1 415 288 7832

annie.fu@colliers.com

CA License No. 02084124

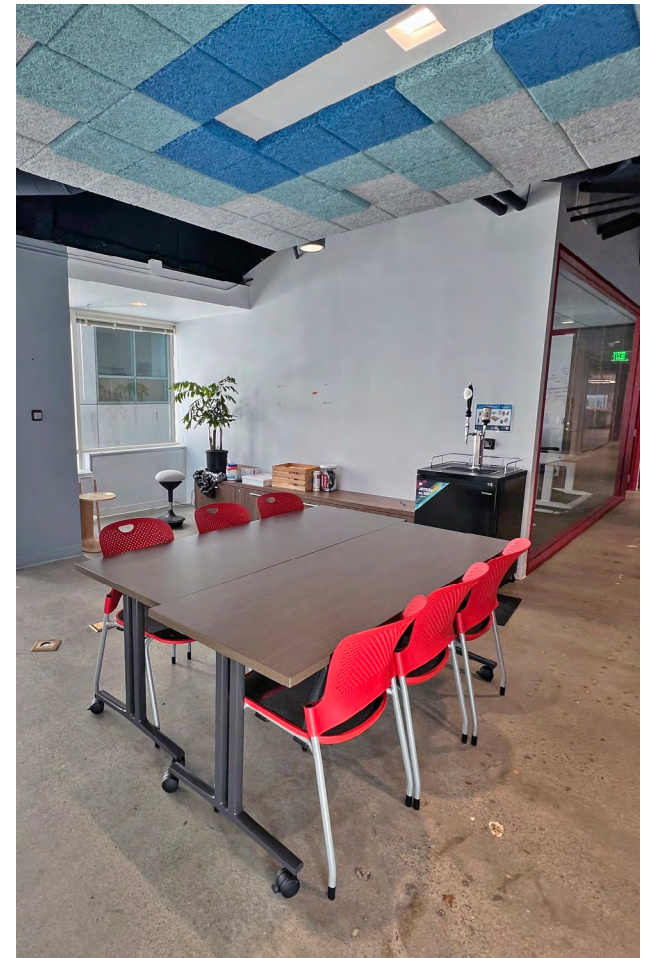


Colliers

Sublease Overview



- Elegant Class A building
- Best-in-class tenant amenities
- Prime Embarcadero location
- Minutes to BART, Muni and Ferry Building
- Onsite vehicle and bike parking
- Landscaped street park



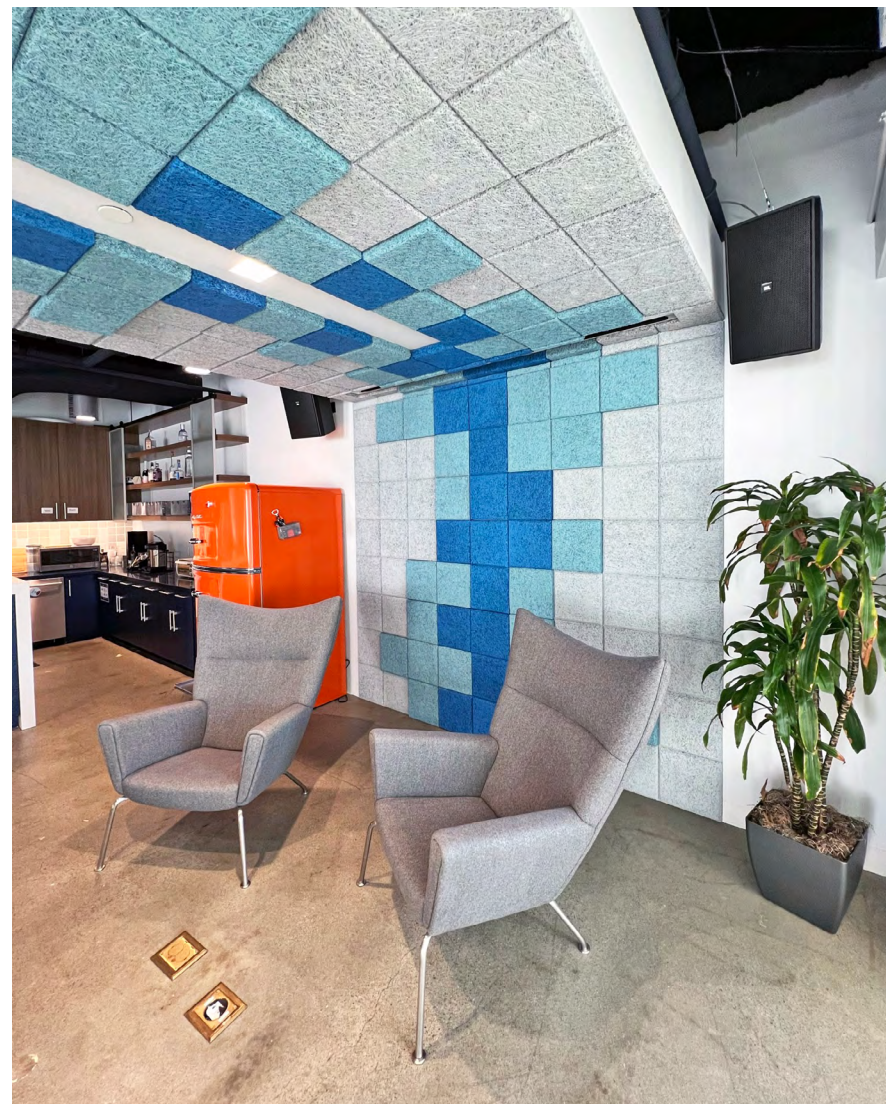
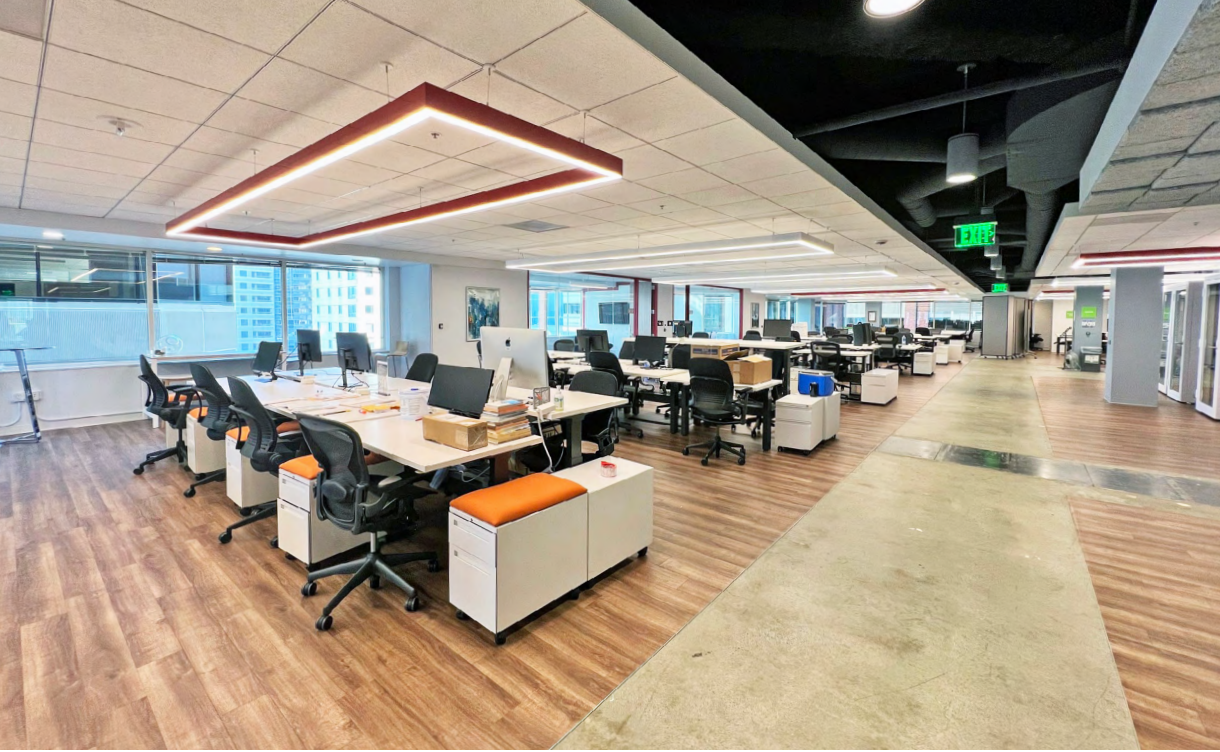
160 Spear Street

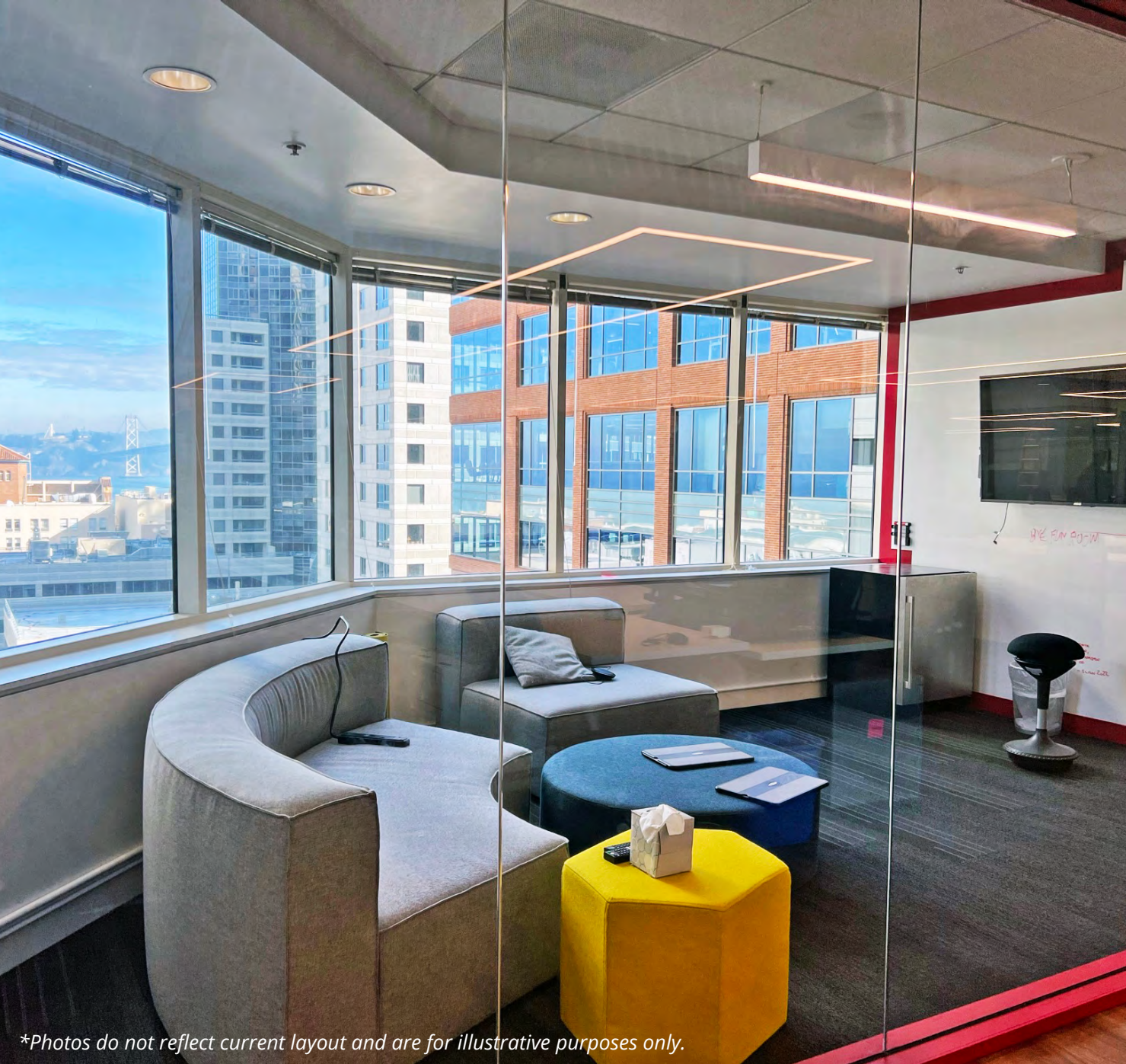
10th Floor
11,685 RSF

360°
Virtual
Tour

- 7 large meeting rooms, 5 small meeting rooms
- Mail room, mothers room, storage
- Large open-plan layout
- Full kitchen and lounge
- Double-door elevator identity
- Bay and Salesforce Park views







101 Second Street
11th Floor
San Francisco, CA 94105
colliers.com

Kellam Nelson

+1 415 288 7886
kellam.nelson@colliers.com
CA License No. 01903896

Annie Fu

+1 415 288 7832
annie.fu@colliers.com
CA License No. 02084124

**Photos do not reflect current layout and are for illustrative purposes only.*

This document has been prepared by Colliers International for advertising and general information only. Colliers International makes no guarantees, representations or warranties of any kind, expressed or implied, regarding the information including, but not limited to, warranties of content, accuracy and reliability. Any interested party should undertake their own inquiries as to the accuracy of the information. Colliers International excludes unequivocally all inferred or implied terms, conditions and warranties arising out of this document and excludes all liability for loss and damages arising there from. This publication is the copyrighted property of Colliers International and/or its licensor(s). ©2024. All rights reserved.